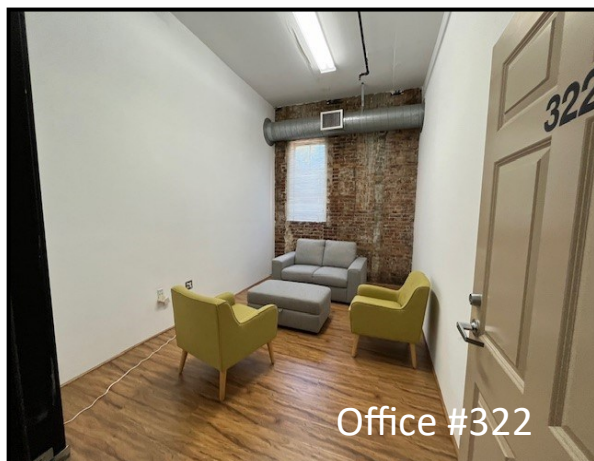


107 S. Fair Oaks Ave., Pasadena, CA



Office #310



Office #322

Beautifully Restored Historic Building

2 Blocks South of Colorado Blvd. in Old Pasadena

Easy Access to Freeways & Metro Gold Line

Elevator Served ~LED Lighting

Secure 24-Hour Access

City Parking Structure Nearby

Street Parking Free Until 11 A.M.

Exposed Brickwork

Wood Effect Flooring Throughout

Lease term: 2-5 years

Available Offices:

Window Office #310 RSF <> 311 RSF

@ \$1,168/Mo FSG

Window Office #322 <> 191 RSF

@ \$736/Mo FSG

Sauvé & Associates
Commercial Real Estate

Leon Saroff leons@sauverec.com DRE #01435173

Office: 626.585.4321 Cell: 626.864.0313

Sauvé & Associates, Inc. DRE# 02117417

12 South Raymond Ave., Suite A, Pasadena, CA