

Properties for Lease

1

4052-4058 Del Rey Ave, Marina Del Rey, CA 90292



Property Details	
Rental Rate Mo	\$3.70 /SF/MO
Property Type	Office
Rentable Building Area	25,100 SF
Building Class	B
Year Built	1989
Status	Active
LoopNet ID	20758040

Broker Information	
	Justin Altemus
	(310) 422-0025

Property Notes

Listing's Link: <https://www.loopnet.com/listing/20758040>

Spaces

#	Space Avail.	Rental Rate	Max Contig.	Lease Type	Date Avail.	Description	Service Type
1st Floor, Ste 102	2,235 SF	\$3.70 /SF/MO		Relet	Now	Layout - 4 private offices, 1 conference room/large office, open area, kitchen and 2 restrooms. No load factor.	Modified Gross
1st Floor, Ste 203/204	2,195 SF	\$3.70 /SF/MO		Relet	Now	Layout - 3 private offices and open bullpen area. No load factor.	Modified Gross

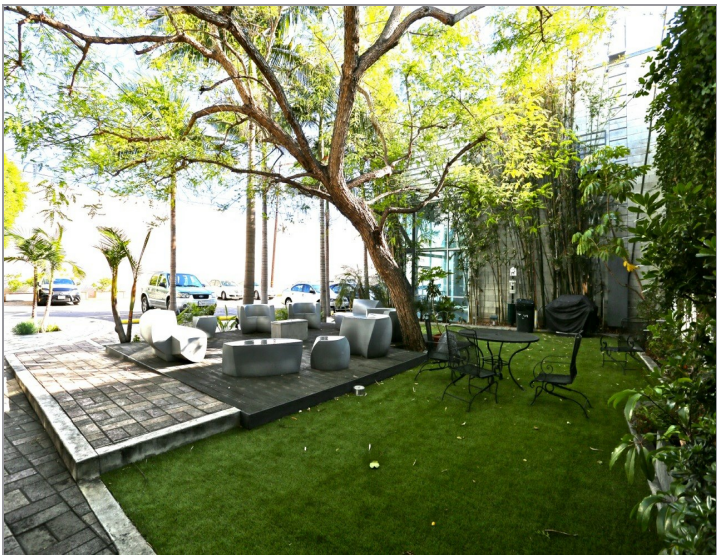
Property Description

Magnificent loft style, multi-tenant creative office building located in the heart of the Marina Del Rey. Perfect for a variety of media, entertainment, production, technology and other creative office users. Shared, outdoor shaded patio area. The property is close to many restaurants and retail amenities. Project contains great parking at 3/1,000 (\$75/car/month), all grade level and single striped spaces located in a secure, gated parking lot. No load factor.

Highlights

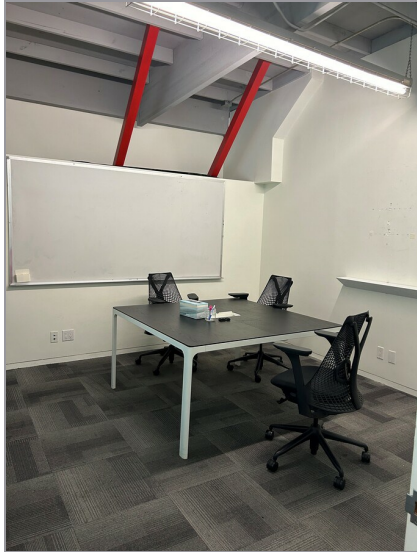
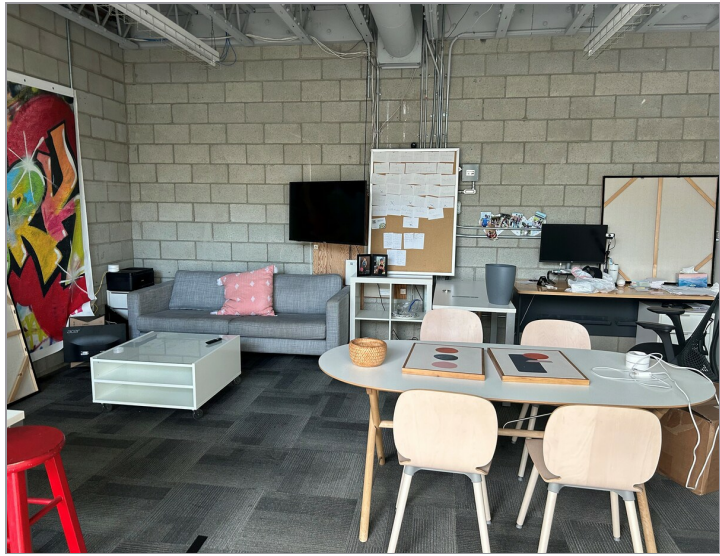
MAGNIFICENT LOFT STYLE CREATIVE OFFICE BUILDING	PERFECT FOR A VARIETY OF CREATIVE OFFICE USES	GREAT MARINA DEL REY LOCATION
CLOSE TO MANY RESTAURANTS AND RETAIL AMENITIES	GREAT PARKING AT NEARLY 3/1,000	NO LOAD FACTOR

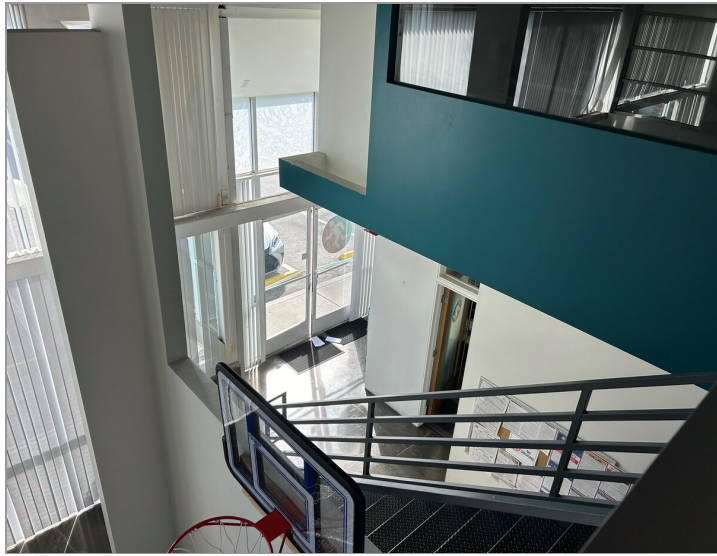
Photos

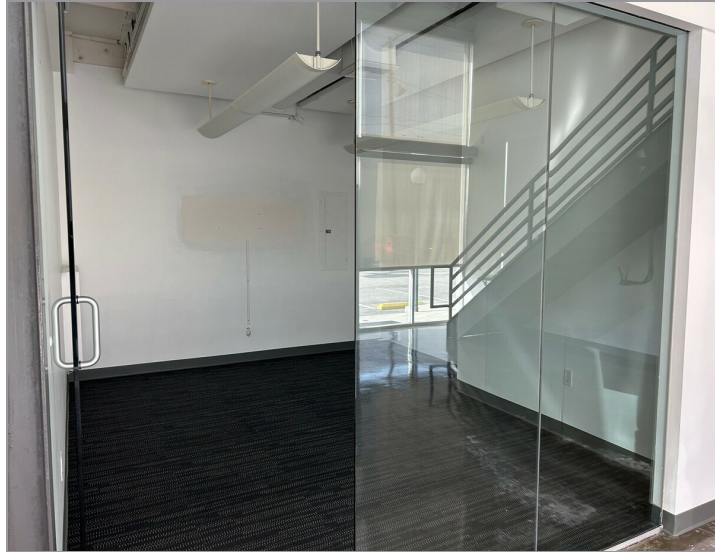
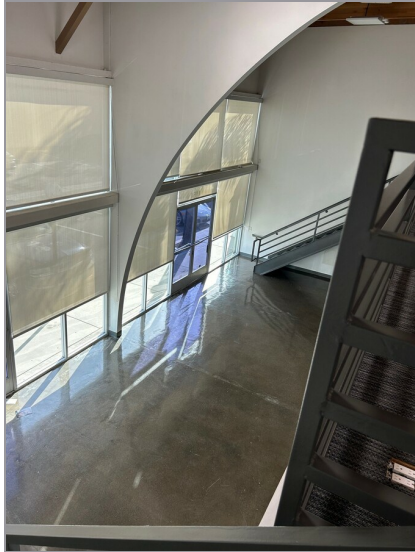
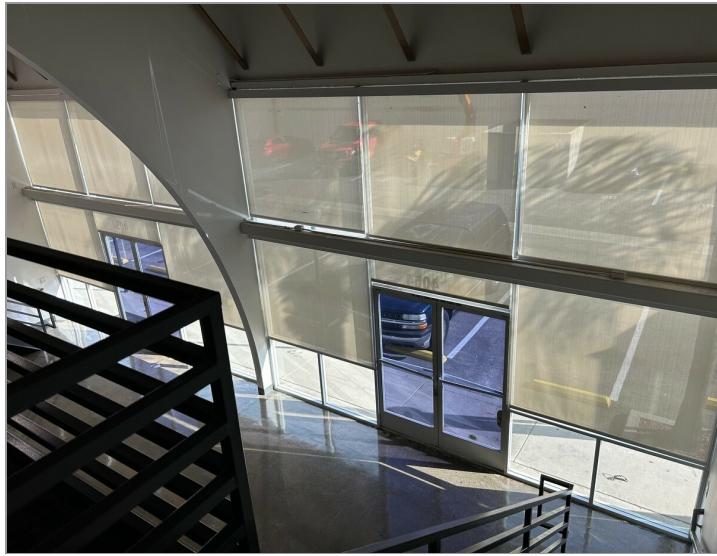




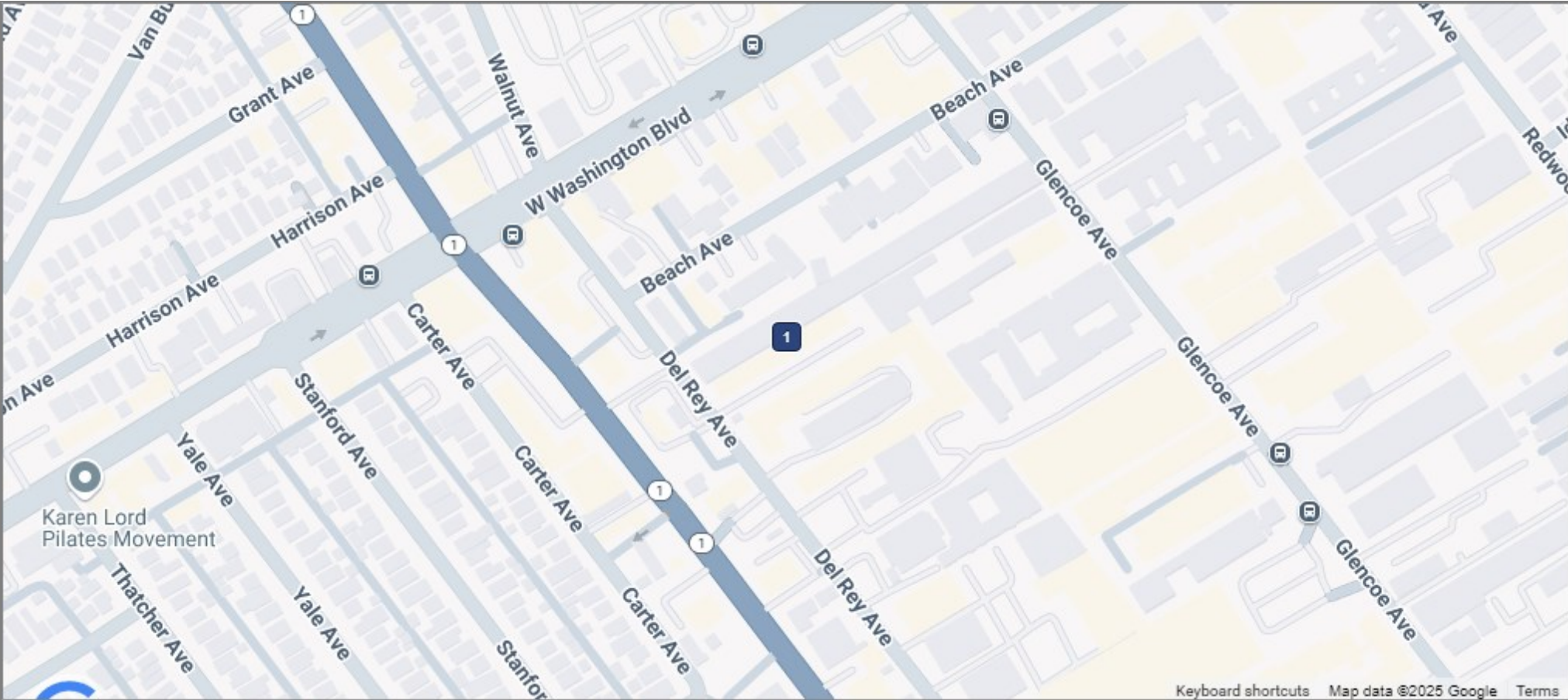












1 4052-4058 Del Rey Ave
Marina Del Rey, CA 90292