

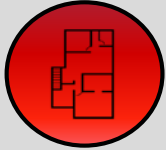
# MARKET STREET STATION

600 MARKET STREET, CHANHASSEN, MN



KRAUS-ANDERSON®  
Realty Company

## SPACE AVAILABLE



Multiple spaces available  
– see site plan

## SHOPPING CENTER



43,626 sf property offering  
various retail and lease  
options

## LOCATION



Located conveniently on  
Hwy 5 in the heart of  
Chanhassen's retail and  
entertainment district

## TRAFFIC COUNT



30,500/VPD on Hwy 5  
14,800/VPD on Hwy 101



	1 Mile	3 Miles	5 Miles
POPULATION	5,435	51,370	121,254
DAYTIME POP	11,088	35,284	92,510
HOUSEHOLDS	2,303	18,590	45,900
HOUSEHOLD INCOME	121,509	174,080	149,043





# Retail Aerial



MARKET STREET STATION  
CHANHASSEN, MN





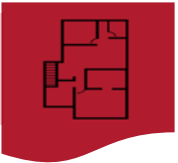


# Aerial View



MARKET STREET STATION  
CHANHASSEN, MN



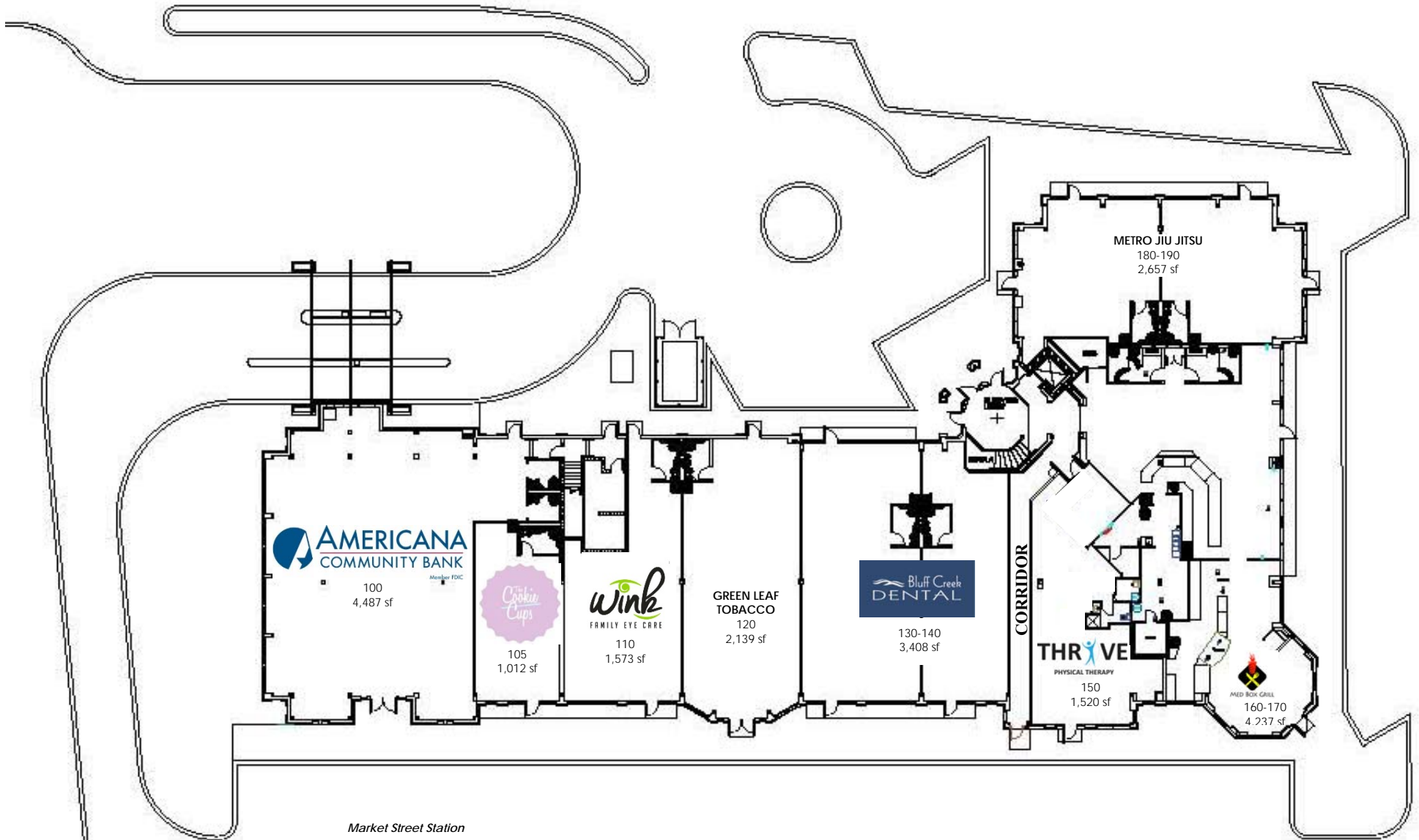


# Site Plan

## MARKET STREET STATION

600 Market Market Street, Chanhassen, MN

### 1st FLOOR



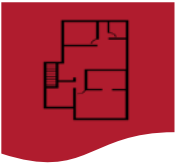
#### Market Street Station

Site Area	43,626 SF
Leaseable Area	43,626 SF
Parking Stalls	267 (1 Stall per 200/sf gross area)

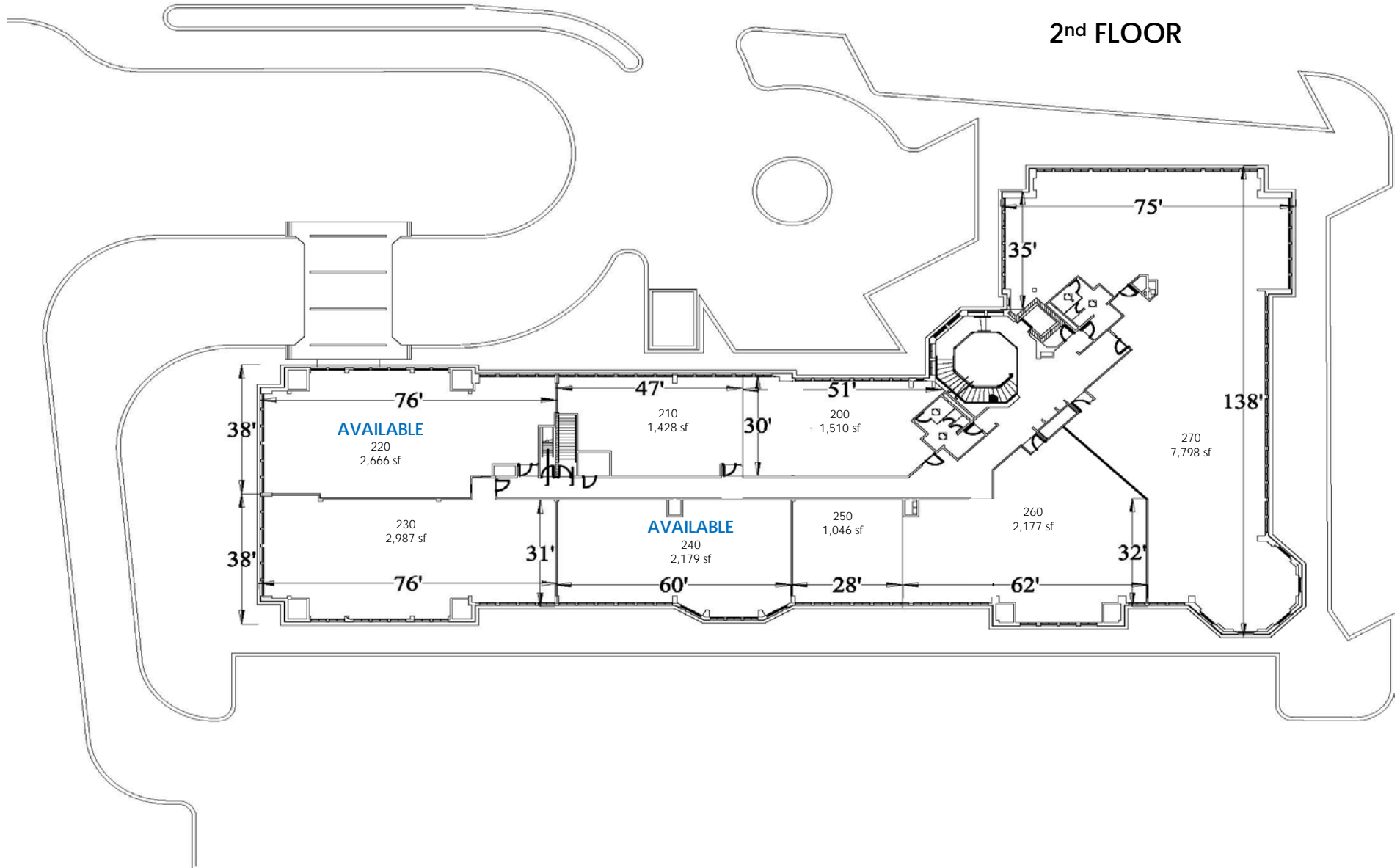
2/5/2020

MARKET STREET STATION  
600 MARKET STREET, CHANHASSEN, MN

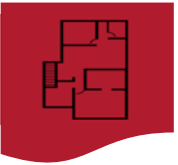




# Site Plan

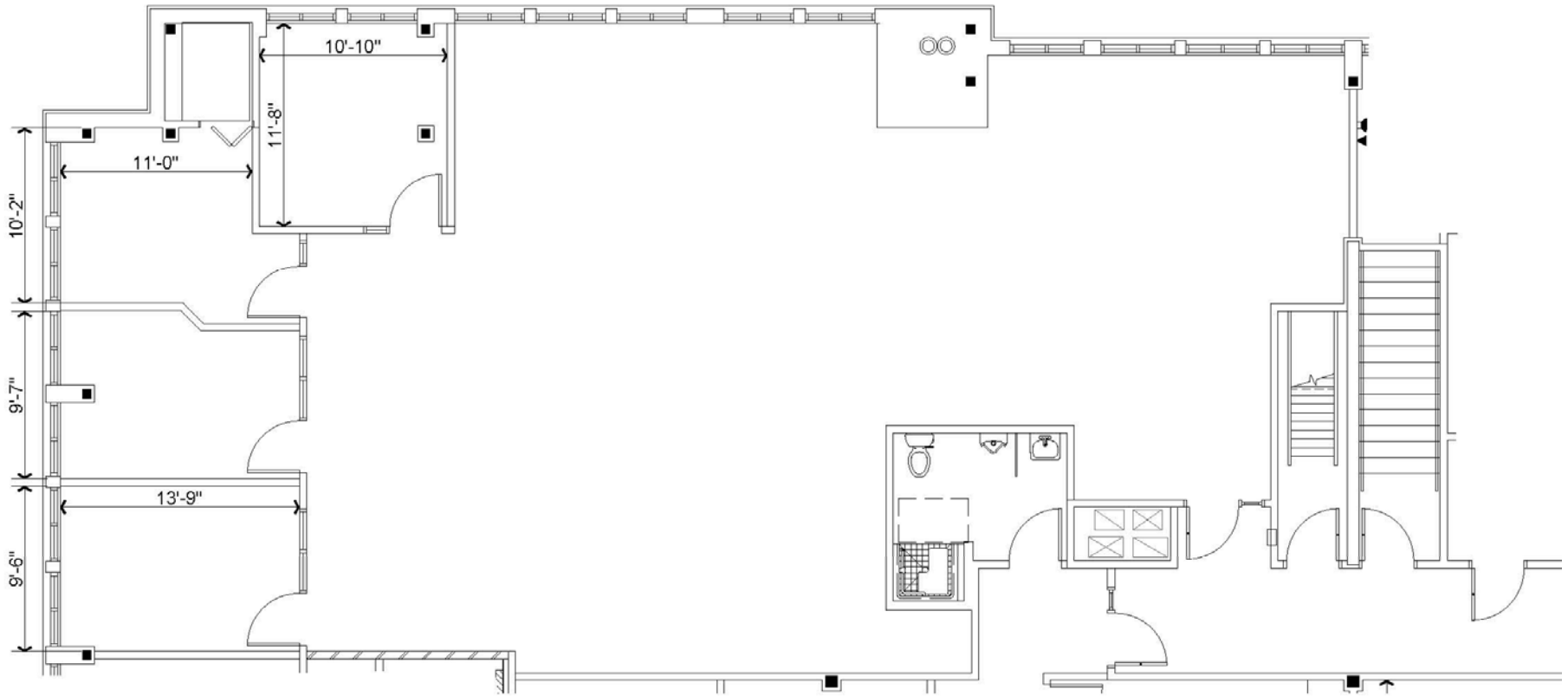






# Site Plan

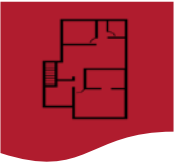
Suite 220  
2,666 sf



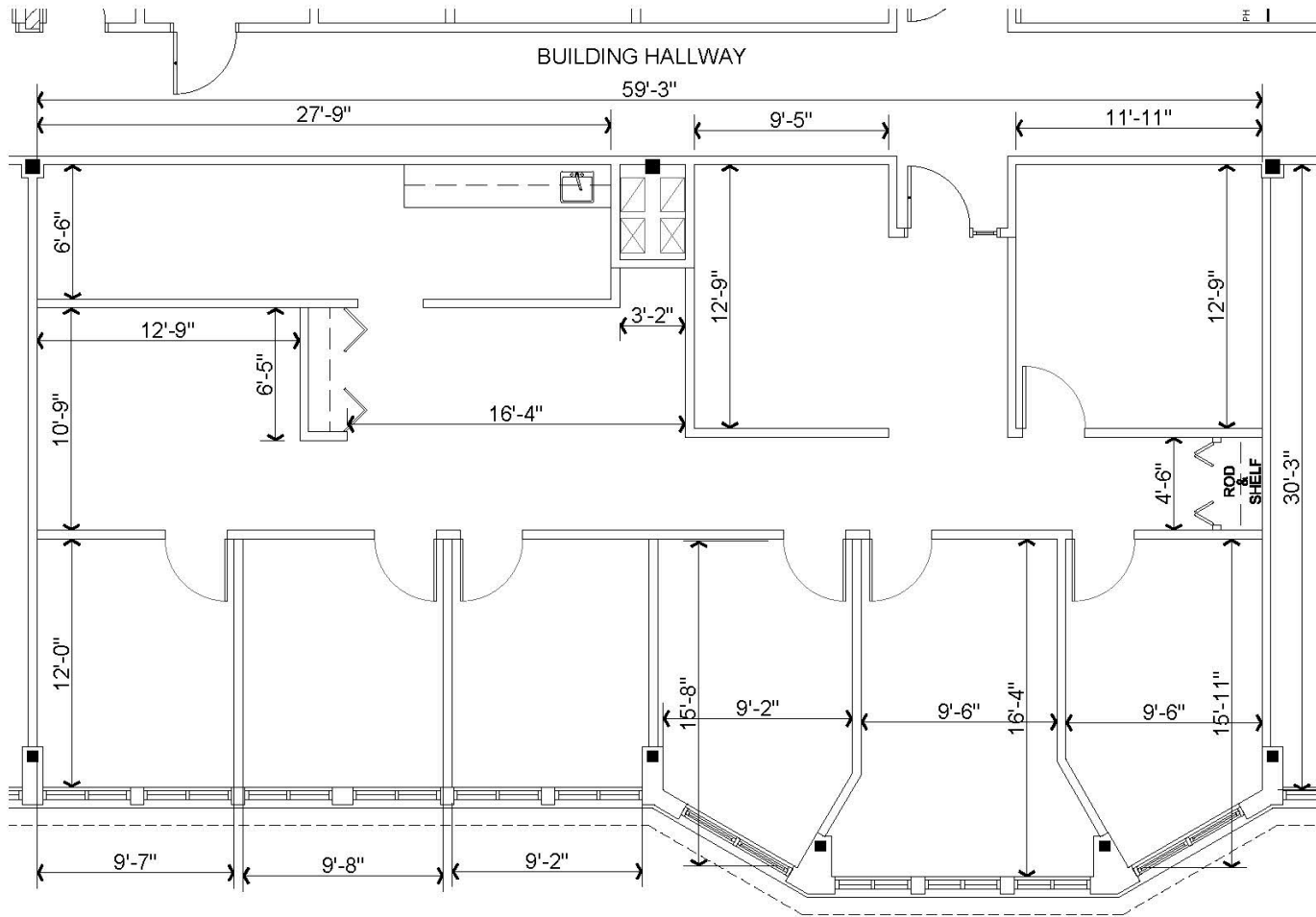
1 FLOOR PLAN  
1 OFFICE: 2,666 SFR



SCALE: 1/8" = 1'-0"



# Site Plan



Suite 240  
2,179 sf

1 FLOOR PLAN  
1 SUITE 240 2,179 S.FR

VACANCY PLAN

NORTH  
SCALE: 1/8" = 1'-0"



# Contact

---

## **Kraus-Anderson**

501 South Eighth Street  
Minneapolis, MN 55404

[www.krausanderson.com](http://www.krausanderson.com)

Main 612-332-7281  
Fax 952-881-8114



## **Mike Belz**



O: 612-255-2374

C: 612-203-9546



[Mike.belz@krausanderson.com](mailto:Mike.belz@krausanderson.com)