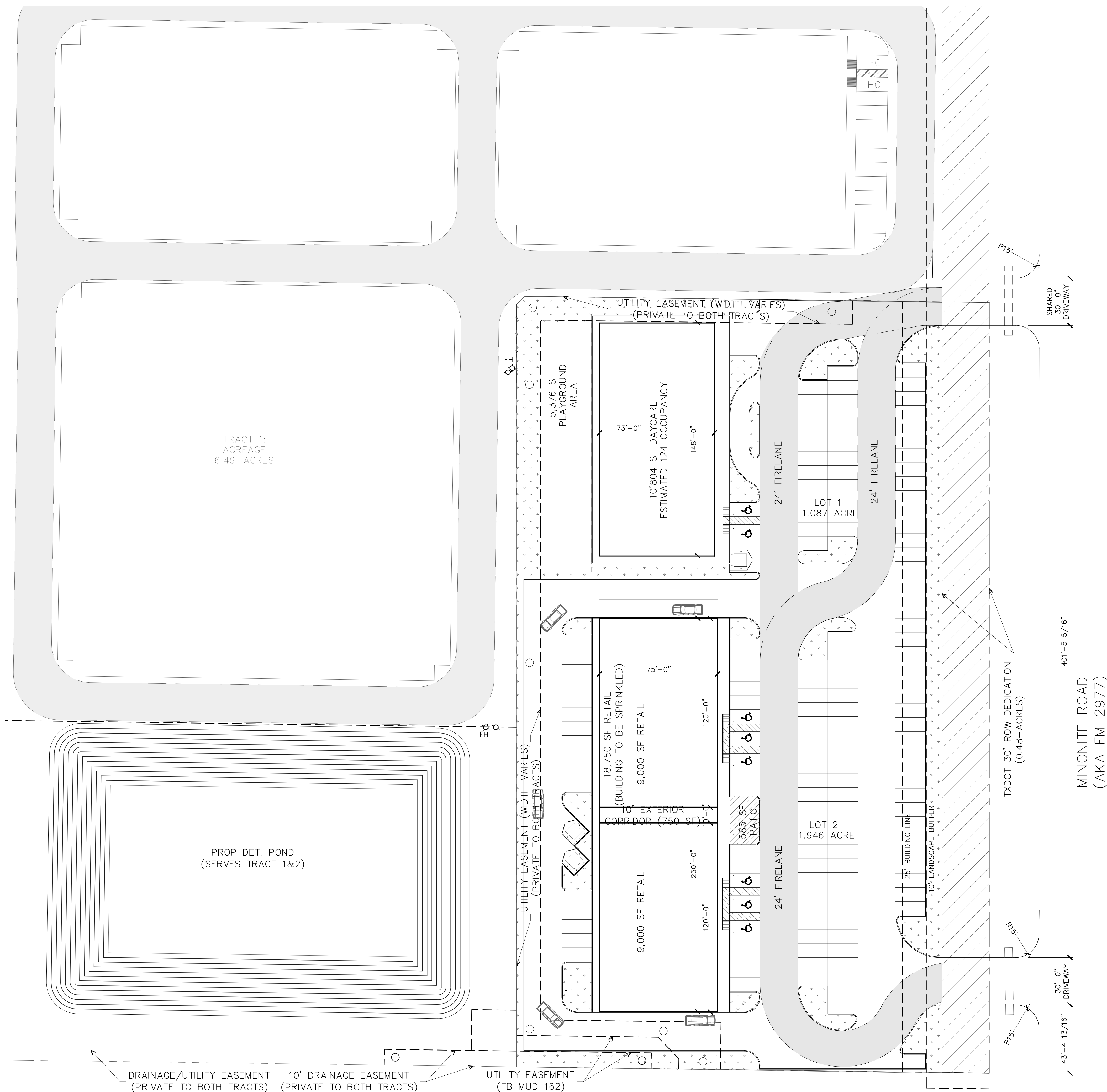


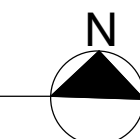
TN Associates, hereby expressly reserves its common law copyright and other property rights in these plans. These plans and drawings are not to be reproduced, changed or copied in any form or manner whatsoever without first obtaining the express written permission of TN Associates, nor are they to be assigned to any third party without first obtaining written permission and consent.

<b>RETAIL AND DAYCARE</b>	
RETAIL:	= 18,750 SF
DAYCARE:	= 10,804 SF
TOTAL BUILDING SF:	= 29,554 SF
PRK RECOM. (MIN 50% RETAIL): 9,000 SF/250	= 36
PRK RECOM. (MAX 50% RESTAURANT): 9,000 SF/125	= 72
PARKING RECOMMENDED (DAYCARE): AT MAX	= 44
TOTAL PARKING RECOMMENDED:	= 152
TOTAL STANDARD PARKING PROVIDED:	= 144
TOTAL ADA PARKING PROVIDED:	= 8
TOTAL PARKING PROVIDED:	= 152
<b>RETAIL</b>	
RETAIL BUILDING:	= 18,750 SF
RENTABLE SPACE:	= 18,000 SF
PRK RECOM. (MIN 50% RETAIL): 9,000 SF/250	= 36
PRK RECOM. (MAX 50% RESTAURANT): 9,000 SF/125	= 72
TOTAL PARKING RECOMMENDED:	= 108
STANDARD PARKING PROVIDED:	= 102
ADA PARKING PROVIDED:	= 6
TOTAL PARKING PROVIDED:	= 108
<b>DAYCARE</b>	
DAYCARE:	= 10,804 SF
DAYCARE AT MAX CAP ESTIMATE (VARIES)	
ADULTS: (ESTIMATED) 24 X 1	= 24
CHILDREN: (ESTIMATED) 100 X 0.2	= 20
PARKING RECOMMEND BASED ON CHILDREN AND ADULT ESTIMATE	= 44
STANDARD PARKING PROVIDED:	= 42
ADA PARKING PROVIDED:	= 2
TOTAL PARKING PROVIDED:	= 44

**19 PARKING CALCULATION**  
Scale: NTS = 1'-0"



01 SITE PLAN #24  
SCALE: 1/32" = 1'-0"



2825 Wilcrest Drive, #616  
Houston, TX. 77042  
Ph: 713-541-3195  
E-mail: info@tnassociatesinc.com

ISSUE  
1 --/--/2025 PERMIT SUB

© Copyright  
TN ASSOCIATES, INC. 2013

**PRELIMINARY  
NOT FOR  
CONSTRUCTION**

PROJECT NAME:

**RETAIL AND DAYCARE**  
0 MINONITE ROAD  
RICHMOND, TEXAS 77469

DATE: 09/22/2025

PROJECT NUMBER: #25-052N

SCALE: AS SHOWN

DRAWN BY: TN

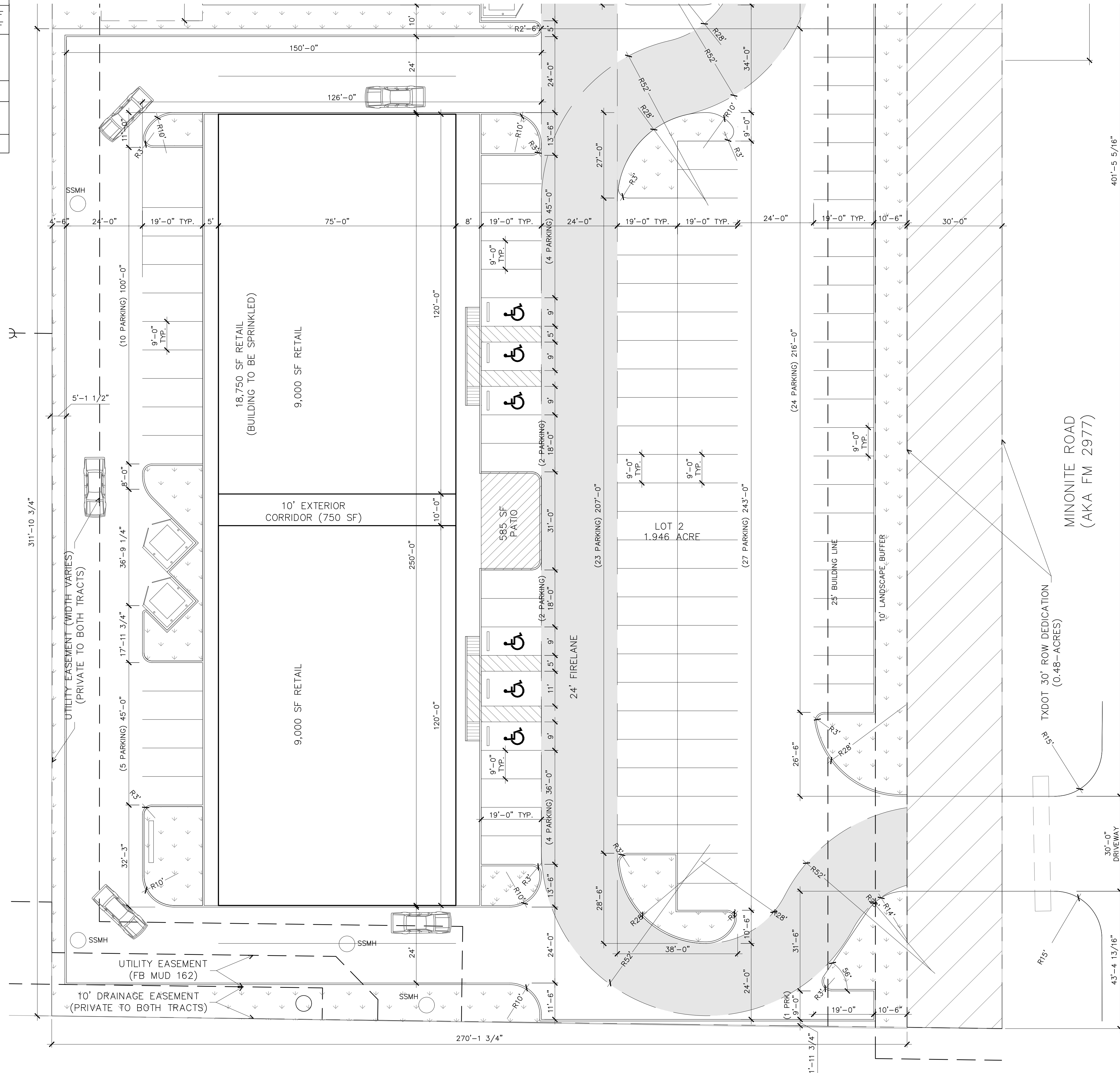
DRAWING NUMBER

**A1.00**

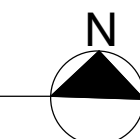
TN Associates, hereby expressly reserves its common law copyright and other property rights in these plans. These plans and drawings are not to be reproduced, changed or copied in any form or manner whatsoever without first obtaining the express written permission of TN Associates, nor are they to be assigned to any third party without first obtaining written permission and consent.

**20 PARKING CALCULATION**  
Scale: NTS = 1'-0"

RETAIL	
RETAIL BUILDING:	= 18,750 SF
RENTABLE SPACE:	= 18,000 SF
PRK RECOM. (MIN 50% RETAIL): 8,875 SF/250	= 36
PRK RECOM. (MAX 50% RESTAURANT): 9,000 SF/125	= 72
TOTAL PARKING RECOMMENDED:	= 108
STANDARD PARKING PROVIDED:	= 102
ADA PARKING PROVIDED:	= 6
TOTAL PARKING PROVIDED:	= 108



01 ENLARGED SITE PLAN #24A  
SCALE: 1/16" = 1'-0"



2825 Wilcrest Drive, #616  
Houston, TX. 77042  
Ph: 713-541-3195  
E-mail: info@tnassociatesinc.com

ISSUE  
1 --/--/2025 PERMIT SUB

© Copyright  
TN ASSOCIATES, INC. 2013

**PRELIMINARY  
NOT FOR  
CONSTRUCTION**

PROJECT NAME:

**RETAIL AND DAYCARE**  
0 MINONITE ROAD  
RICHMOND, TEXAS 77469

DATE: 09/22/2025

PROJECT NUMBER: #25-052N

SCALE: AS SHOWN

DRAWN BY: TN

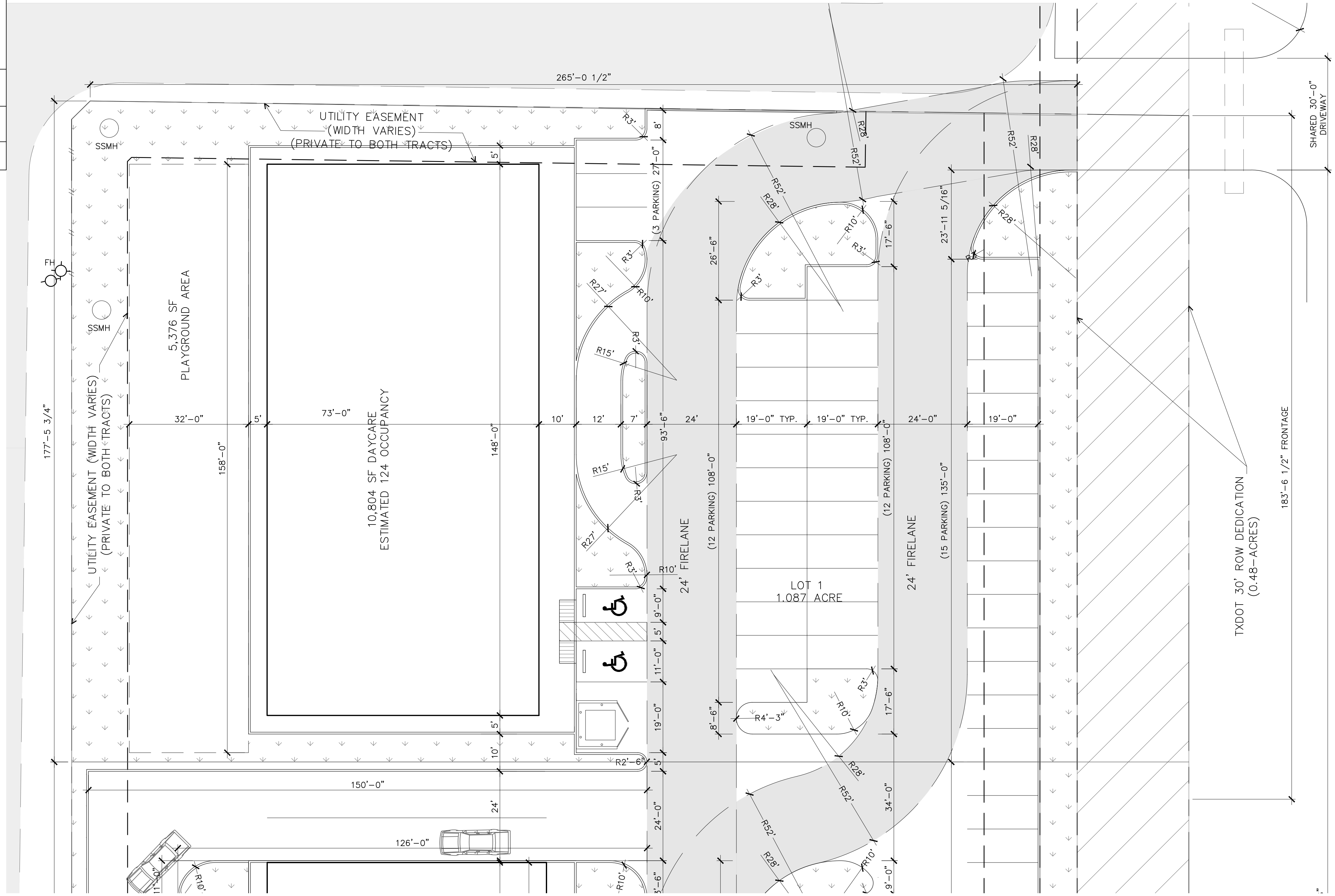
DRAWING NUMBER

**A1.01**

TN Associates, hereby expressly reserves its common law copyright and other property rights in these plans. These plans and drawings are not to be reproduced, changed or copied in any form or manner whatsoever without first obtaining the express written permission of TN Associates, nor are they to be assigned to any third party without first obtaining written permission and consent.

**20 PARKING CALCULATION**  
Scale: NTS = 1'-0"

DAYCARE	=	10,804 SF
DAYCARE AT MAX CAP ESTIMATE (VARIES)	=	
ADULTS: (ESTIMATED) 24 X 1	=	24
CHILDREN: (ESTIMATED) 100 X 0.2	=	20
PARKING RECOMMEND BASED ON CHILDREN AND ADULT ESTIMATE	=	44
STANDARD PARKING PROVIDED:	=	42
ADA PARKING PROVIDED:	=	2
TOTAL PARKING PROVIDED:	=	44



2825 Wilcrest Drive, #616  
Houston, TX. 77042  
Ph: 713-541-3195  
E-mail: info@tnassociatesinc.com

ISSUE  
1 --/--/2025 PERMIT SUB

© Copyright  
TN ASSOCIATES, INC. 2013

**PRELIMINARY  
NOT FOR  
CONSTRUCTION**

PROJECT NAME:

**RETAIL AND DAYCARE**  
0 MINONITE ROAD  
RICHMOND, TEXAS 77469

DATE: 09/22/2025

PROJECT NUMBER: #25-052N

SCALE: AS SHOWN

DRAWN BY: TN

DRAWING NUMBER

**A1.02**

01 ENLARGED SITE PLAN #24B  
SCALE: 1/16" = 1'-0"

