



# Historic Laurel Property

111 E Main St | Laurel, Montana 59044

## Property Highlights

- 2,700 SF of Open-Concept Retail Space
- (3) Designated Parking Spots in the Back
- (2) ADA-Compliant Restrooms
- (2) Multi-Purpose Rooms
- Basement: Full basement extending the entire length of the retail space.
- Comes complete with working retail counter space, plumbed water for a sink, and a glass rinser, ready for immediate retail or food/beverage use.

## OFFERING SUMMARY

Sale Price:	\$295,000
Number of Units:	1
Lot Size:	3,900 SF
Building Size:	5,400 SF

DEMOGRAPHICS	0.3 MILES	0.5 MILES	1 MILE
Total Households	193	892	2,497
Total Population	422	2,029	5,944
Average HH Income	\$102,422	\$96,254	\$98,535

## Property Description

Own a piece of long standing history, 111 E Main Street stands as a tangible piece of Laurel's transformation, from a railroad-influenced boomtown to a stable commercial center.

### Margaret Kirby

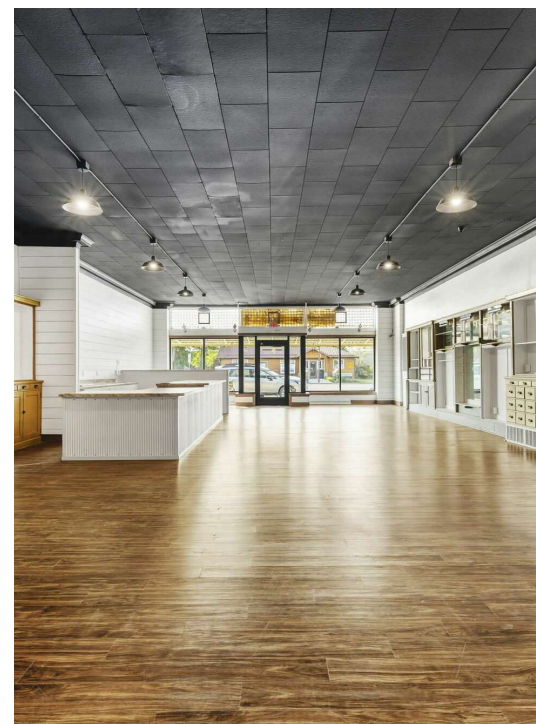
Commercial Sales Agent | 406.256.5000  
mkirby@naibusinessproperties.com | MT #RRE-RBS-LIC-119294

### Brian McDonald

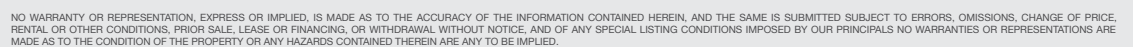
Broker/Principal | 406.294.6303  
bmcdonald@naibusinessproperties.com



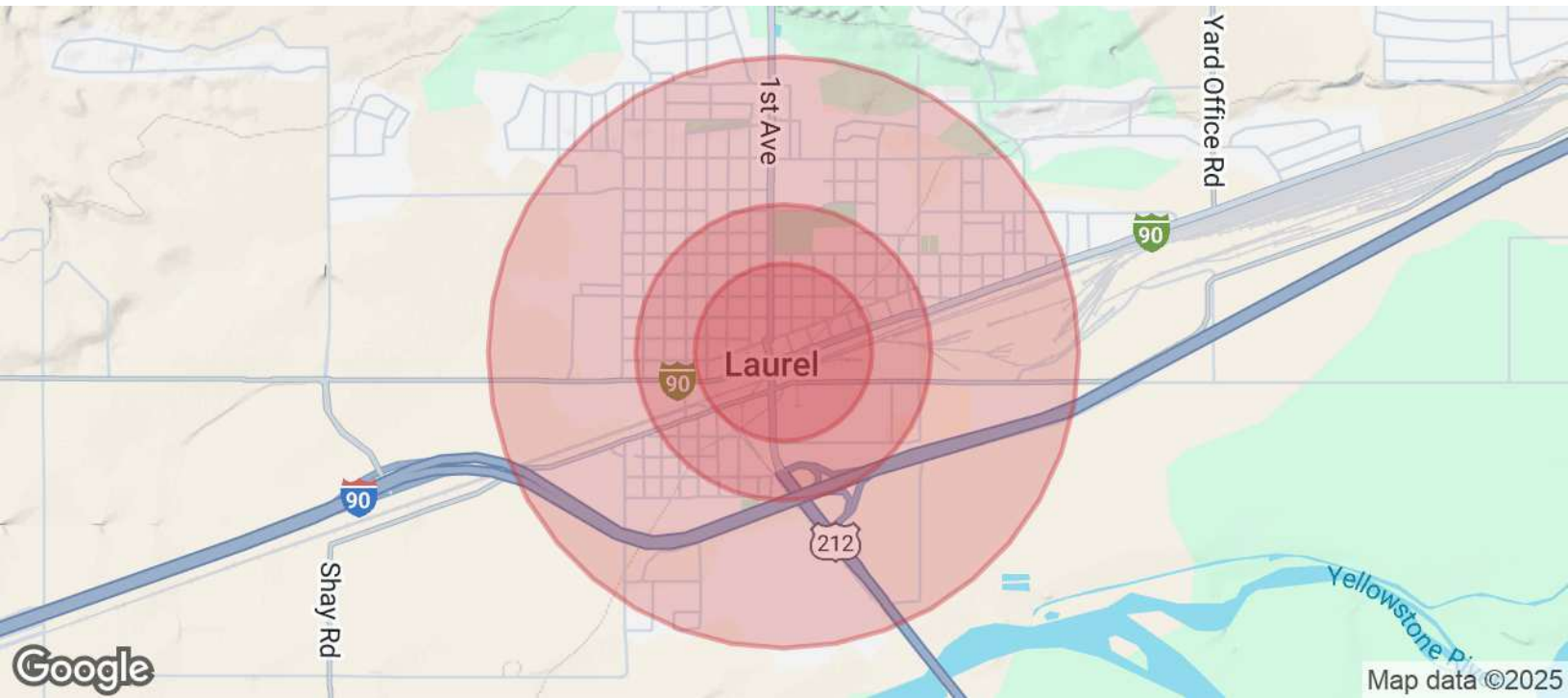




Broker/Principal | 406.294.6303  
bmcdonald@naibusinessproperties.com







POPULATION	0.3 MILES	0.5 MILES	1 MILE
Total Population	422	2,029	5,944
Average Age	40	40	41
Average Age (Male)	38	39	39
Average Age (Female)	42	42	42
HOUSEHOLDS & INCOME	0.3 MILES	0.5 MILES	1 MILE
Total Households	193	892	2,497
# of Persons per HH	2.2	2.3	2.4
Average HH Income	\$102,422	\$96,254	\$98,535
Average House Value	\$356,044	\$354,349	\$355,639

Demographics data derived from AlphaMap



## Margaret Kirby

Commercial Sales Agent | 406.256.5000  
mkirby@naibusinessproperties.com | MT #RRE-RBS-LIC-119294

## Brian McDonald

Broker/Principal | 406.294.6303  
bmcdonald@naibusinessproperties.com