

2500 N. SHIELDS BOULEVARD
MOORE, OK 73160



Industrial Building For Lease

1,500 SF - 6,000 SF

Lease Price: \$11.00/SF/YR + NNN

NAIRED COMMERCIAL
REAL ESTATE

405.840.0600 | NAIRED.COM

AMIR SHAMS
405.313.0333
AMIR@NAIRED.COM

ZAC MCQUEEN
405.476.9199
ZAC@NAIRED.COM

MASON CONWAY
405.531.6272
MASON@NAIRED.COM



PROPERTY OVERVIEW

TOTAL SF 21,200 SF +/-

LOT SIZE 1.03 ACRES +/-

ZONING I-2

- Brand New Construction
- 12' x 12' Grade Level Door (One Door Per Suite)
- 14' Clear
- Turn-Key 1,500 SF of Office Per Suite
- Suites Can Be Combined
- Excellent Access to I-35 Servicing South OKC, Moore, and Norman

DEMOGRAPHICS



POPULATION

1 MILE: 11,001
3 MILES: 85,598
5 MILES: 212,081



AVERAGE HOUSEHOLD INCOME

1 MILE: \$80,973
3 MILES: \$81,035
5 MILES: \$82,382



TOTAL HOUSEHOLDS

1 MILE: 4,357
3 MILES: 33,765
5 MILES: 79,779



0.8 MILES FROM I-35
1.8 MILES FROM I-240
5 MILES FROM I-44

2500 N. SHIELDS BOULEVARD SITE PLAN



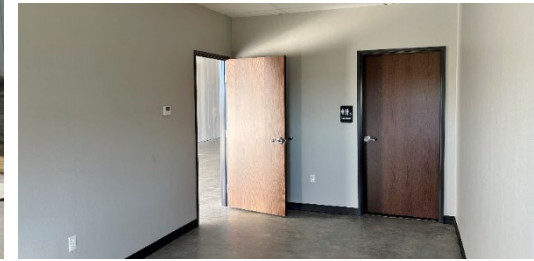
Building 400 – 12,000 SF

- Suite 413 – 1,500 SF – Available – \$1,375/Month + NNN

Building 500 – 9,000 SF

- Suite 505 – 1,500 SF – Available – \$1,375/Month + NNN
- Suite 509 – 1,500 SF – Available – \$1,375/Month + NNN
- Suite 513 – 1,500 SF – Available – \$1,375/Month + NNN
- Suite 517 – 1,500 SF – Available – \$1,375/Month + NNN
- Suites 505-517 Can be combined into either 3,000 SF, 4,500 SF, or 6,000 SF

2500 N. SHIELDS BOULEVARD



2500 N. SHIELDS BOULEVARD



2500 N. SHIELDS BOULEVARD AERIAL

