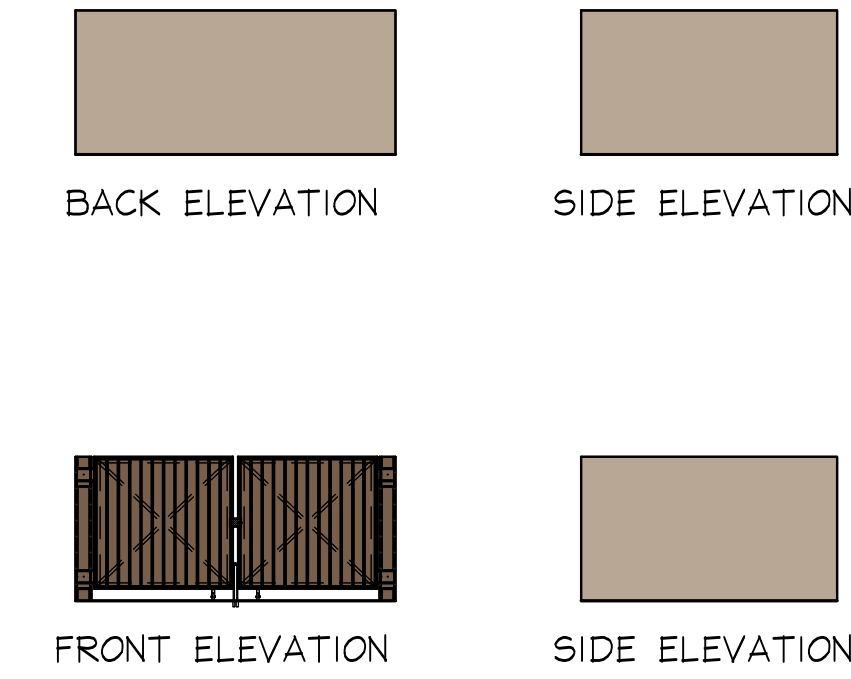


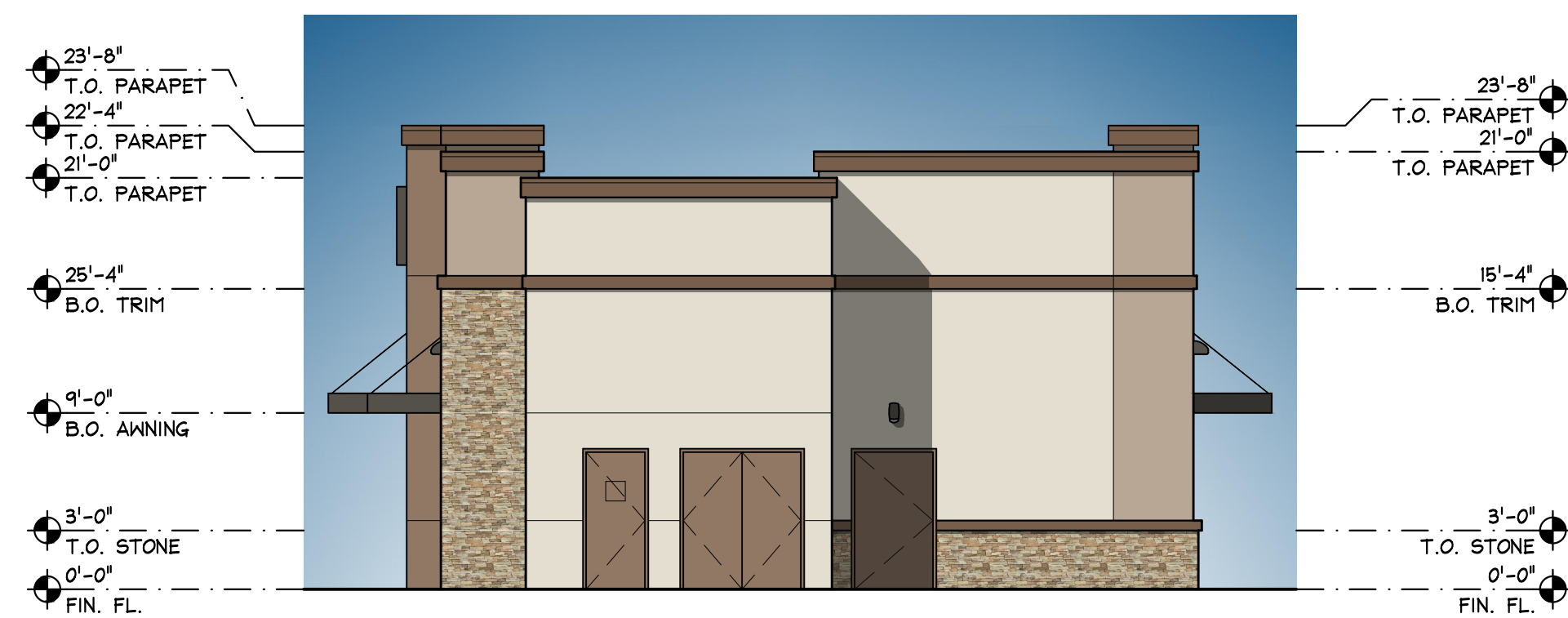
HONEYCUTT & WHISKER RESTAURANT/RETAIL

41027 WEST HONEYCUTT ROAD
 MARICOPA, ARIZONA 85138
 PROJECT NUMBER: 25004



2 WEST COLOR ELEVATION
 SCALE: 1/8"=1'-0"

5 DUMPSTER COLOR ELEV.
 SCALE: 1/8"=1'-0"



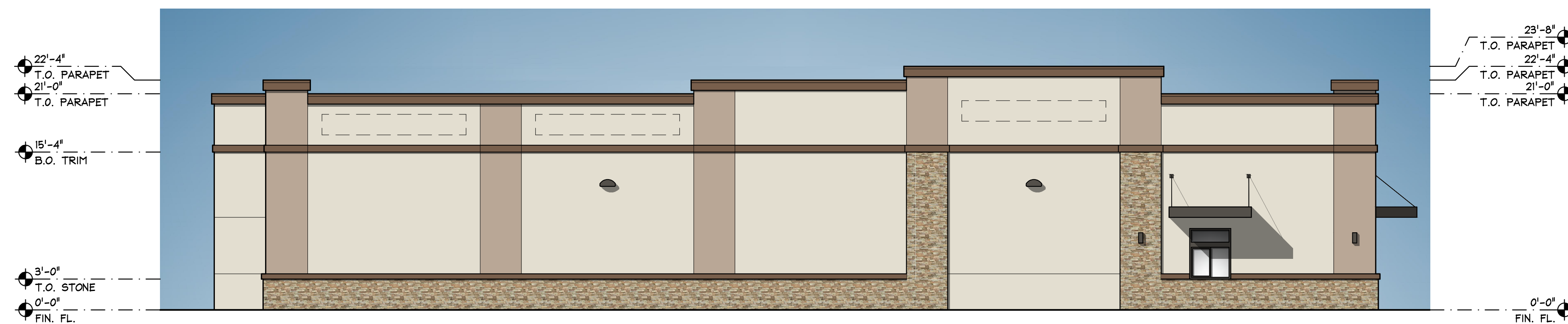
3 SOUTH COLOR ELEVATION
 SCALE: 1/8"=1'-0"



1 NORTH COLOR ELEVATION
 SCALE: 1/8"=1'-0"

EXTERIOR COLORS & MATERIALS

MARK	MATERIAL	FINISH / COLOR
(P-1)	STUCCO	PAINT SHERWIN WILLIAMS - COLOR: SW7011 'NATURAL CHOICE'
(P-2)	STUCCO	PAINT SHERWIN WILLIAMS - COLOR: SW9087 'SMOKY BEIGE'
(P-3)	STUCCO	PAINT SHERWIN WILLIAMS - COLOR: SW9089 'LLAMA WOOL'
(P-4)	STUCCO	PAINT- ACCENT BANDS/ PARAPET CAP SHERWIN WILLIAMS - COLOR: SW9090 'CARAIBE'
(P-5)	METAL AWNING	PAINT - AWNINGS AND ACCENT LIGHTS SHERWIN WILLIAMS - COLOR: SW7048 'URBANE BRONZE'
(ST-1)	STONE	CULTURED STONE MOJAVE- COUNTRY LEDGESTONE
(AL-1)	ALUM/ GLAZING	ALUMINUM STOREFRONT / ENTRY DOORS COLOR: DARK BRONZE W/ 1" LOW-E GLAZING



4 EAST COLOR ELEVATION
 SCALE: 1/8"=1'-0"

GENERAL NOTES

- ALL SIGNAGE TO BE UNDER SEPARATE REVIEW AND PERMIT.
- ALL ROOF MOUNTED MECHANICAL EQUIPMENT SHALL BE FULLY SCREENED BY PARAPET WALLS EQUAL TO, OR GREATER THAN, THE HIGHEST POINT ON THE MECHANICAL EQUIPMENT
- ALL GROUND MOUNTED MECHANICAL EQUIPMENT SHALL BE SCREENED BY SOLID MASONRY WALLS AND GATES EQUAL TO OR GREATER THAN, THE HIGHEST POINT ON THE MECHANICAL EQUIPMENT

01-20-26
 COLOR ELEVATIONS
A2.02



88 south san marcos place
 chandler = arizona = 85225
 p. 480.377.2222
 www.robertbrownarchitects.com

This document, including the ideas and designs it contains, is an instrument of professional services rendered by the Architect/Engineer. This document may not be used or copied in whole, or in part, for any purpose other than this specific project without the expressed written consent of Robert Brown Architects.