

# Westport Center

10411 Hickman Rd  
Urbandale, Iowa 50322  
[www.cbre.com/desmoines](http://www.cbre.com/desmoines)

## Available Space

- + 3,572 SF
  - Large showroom/retail space
  - Single office
  - Breakroom
  - Conditioned work room
  - ~1,750 SF of warehouse

## Lease Rate

- + \$12.00/SF NNN
- + OPEX: \$4.70 /SF

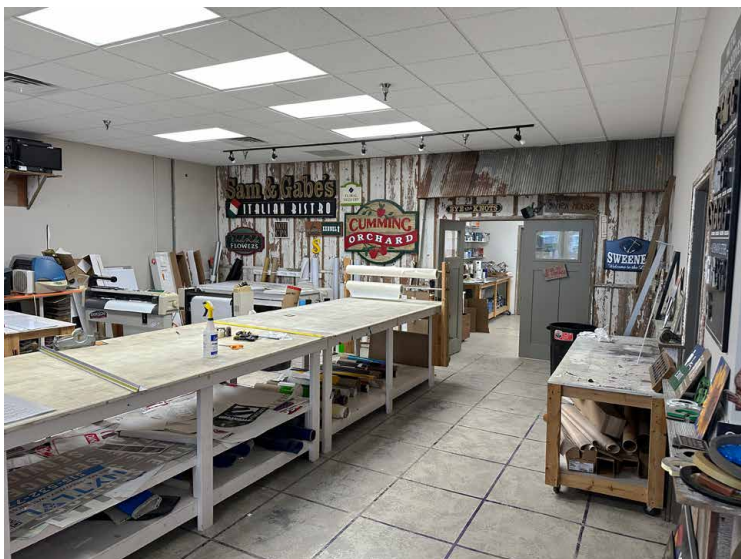
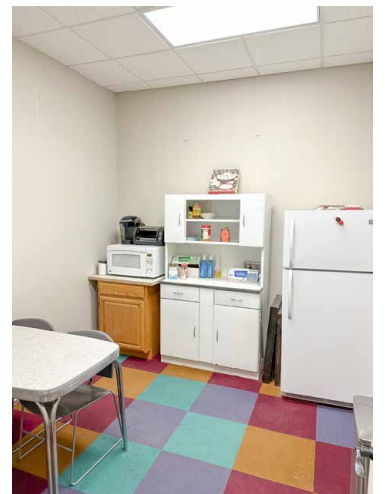
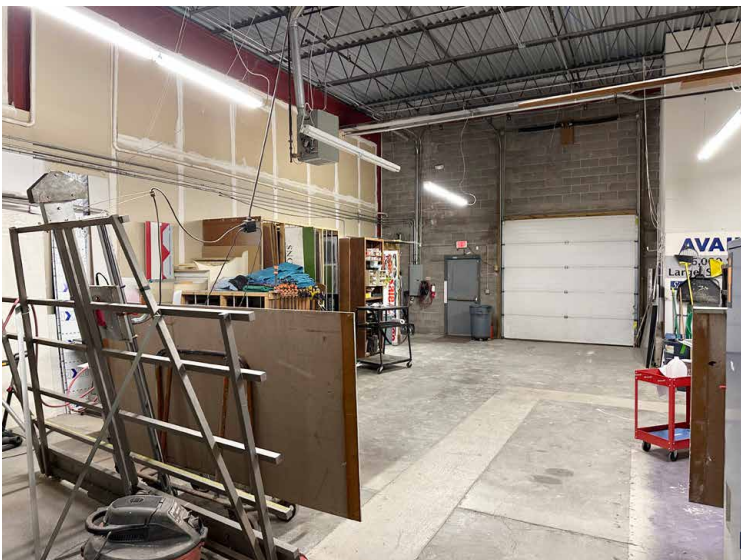
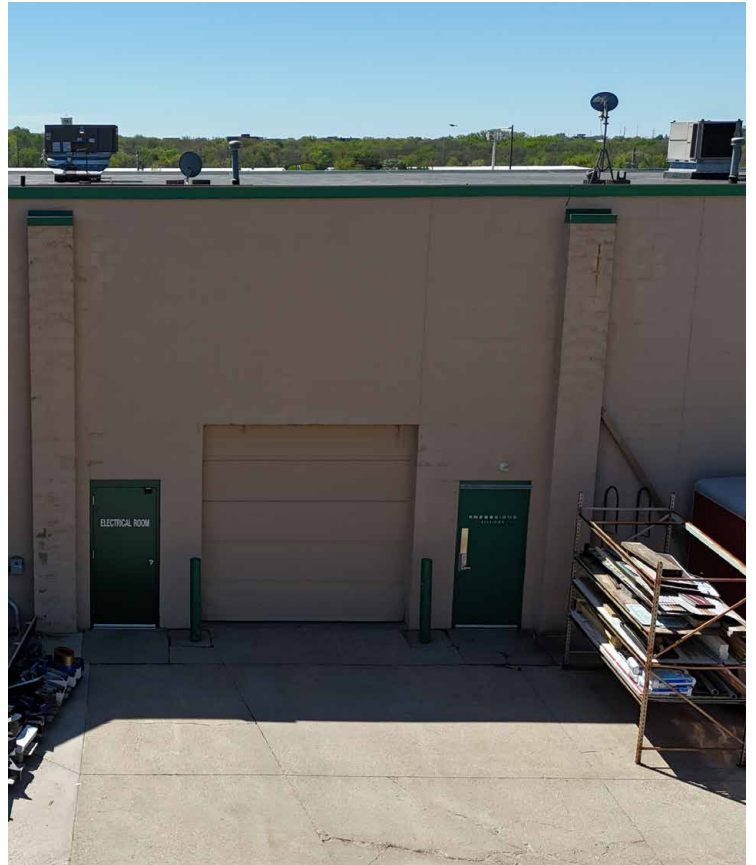
## Location Highlights

- + 26,600 VPD on Hickman Road
- + Highly visible from Hickman Road
- + Parking at the door
- + 1 Drive-in doors
- + Easy access to Metro & I-35/80





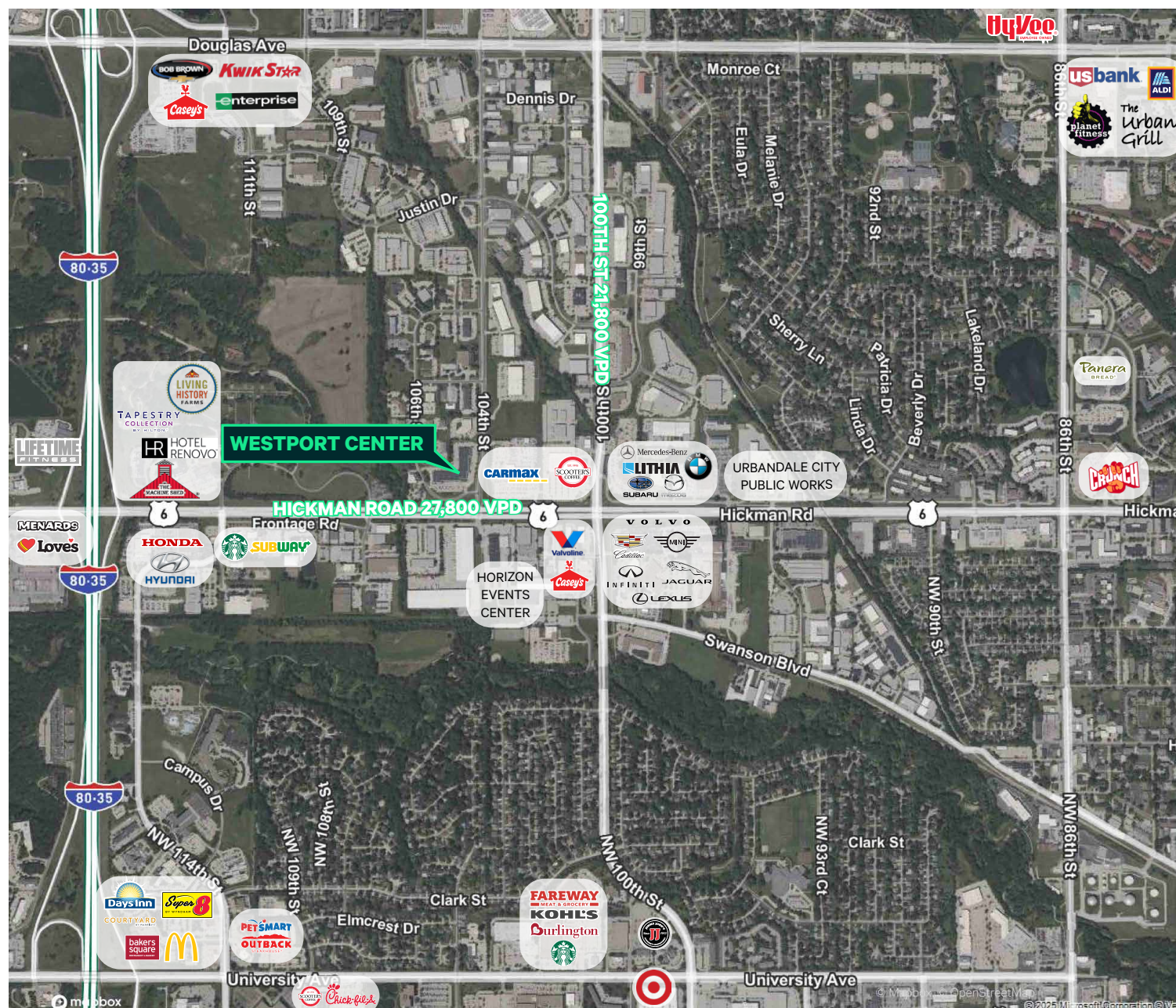
# Photos





10411 Hickman Rd | Urbandale, Iowa 50322

# Location



## Contact Us

Licensed in the State of Iowa

Licensed in the State of Iowa

© 2025 CBRE, Inc. All rights reserved. This information has been obtained from sources believed reliable, but has not been verified for accuracy or completeness. You should conduct a careful, independent investigation of the property and verify all information. Any reliance on this information is solely at your own risk. CBRE and the CBRE logo are service marks of CBRE, Inc. All other marks displayed on this document are the property of their respective owners, and the use of such logos does not imply any affiliation with or endorsement of CBRE. Photos herein are the property of their respective owners. Use of these images without the express written consent of the owner is prohibited.

[www.cbre.com/desmoines](http://www.cbre.com/desmoines)

**CBRE**