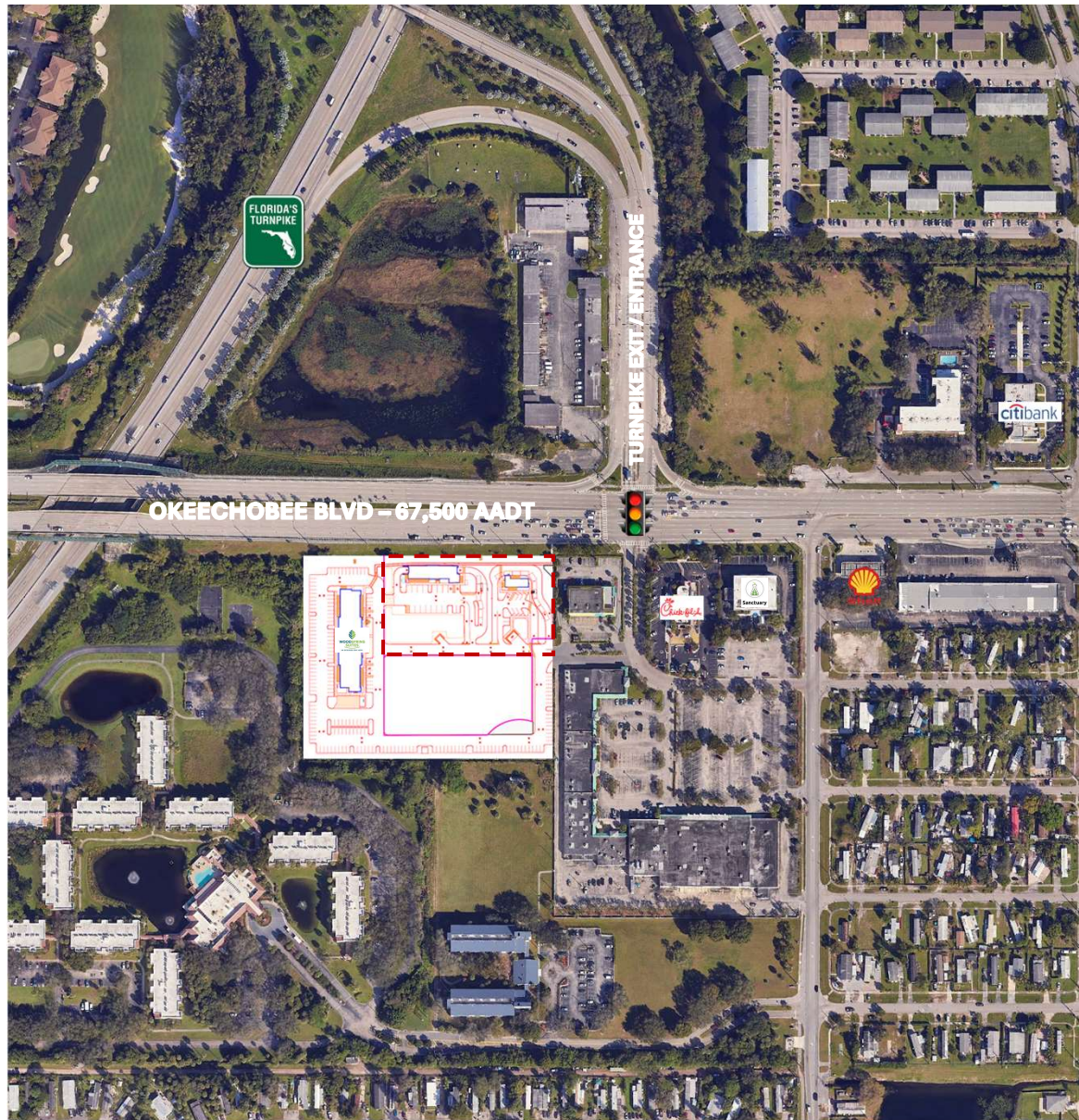


±2.0 AC RETAIL DEVELOPMENT

6126 OKEECHOBEE BLVD, WEST PALM BEACH, FL 33417
(PALM BEACH COUNTY)

FOR SALE | LEASE



AVAILABLE SPACE

OP ±2.0 AC (divisible)

PROPERTY HIGHLIGHTS

- ±2.0 AC development parcel
- Shared access at traffic light directly across from the Florida's Turnpike entrance/exit
- Adjacent to and shared access with Chick Fil A
- Fully approved site plan for Express Car Wash & QSR w/ drive thru

TRAFFIC COUNTS

67,500 AADT on Okeechobee Blvd
73,200 AADT on Florida's Turnpike

DEMOGRAPHICS

	1 Mile	3 Mile	5 mile
Population	15,072	93,289	233,653
Households	7,326	37,465	89,289
Avg HH Income	\$52,434	\$65,912	\$71,851

TENANTS IN IMMEDIATE AREA



CONTACT INFO

LINDSEY MEYERS, Principal | Broker

Lindsey@sracre.com

404.556.4960

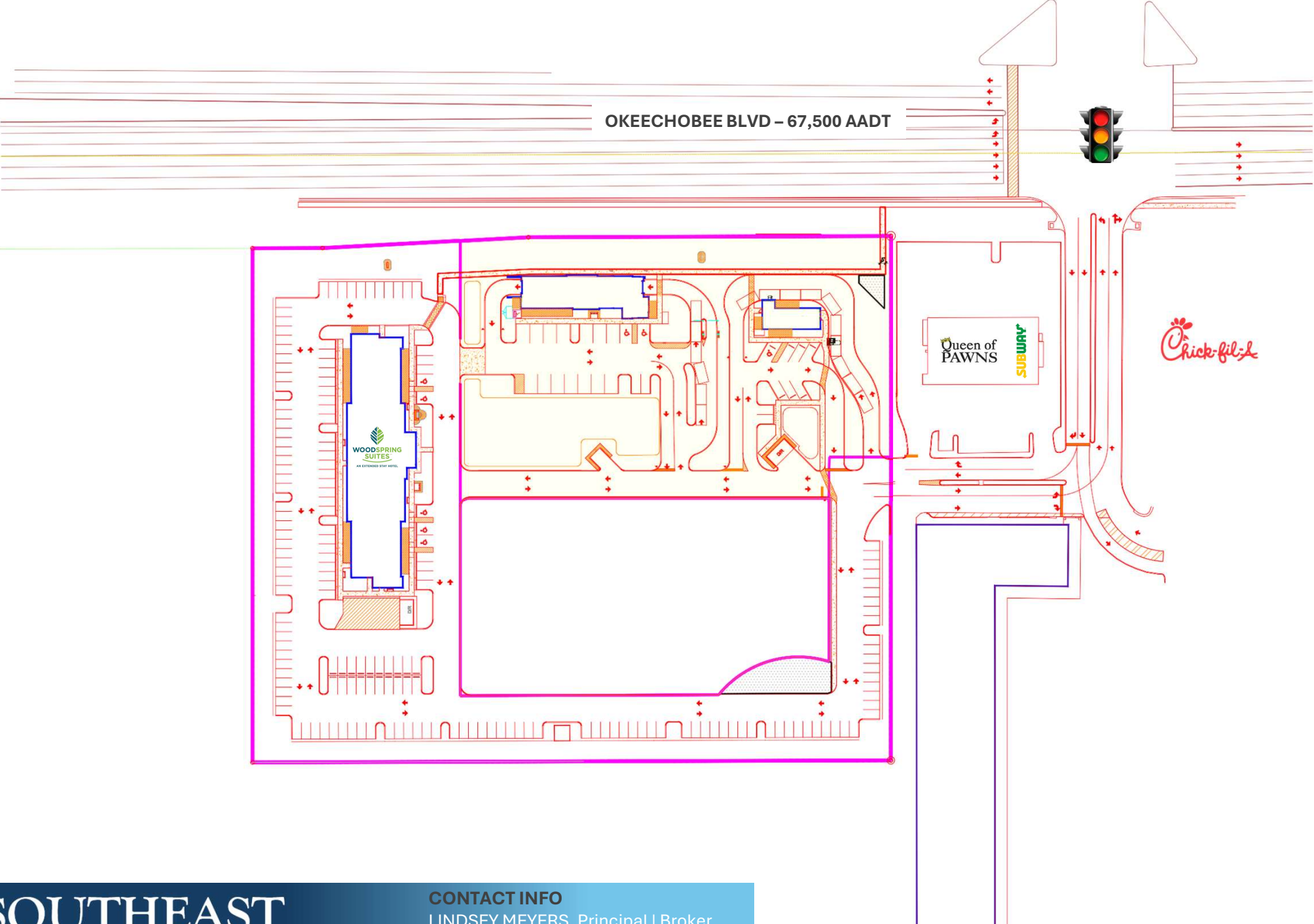
**SOUTHEAST
RETAIL ADVISORS**

851 Broken Sound Parkway NW, Suite 160, Boca Raton, FL 33487 | www.sracre.com

*The information herein was obtained from third parties. Any and all interested parties should have their choice of experts inspect the property and verify all information. Southeast Retail Advisors, Inc. makes no warranties or guarantees as to the information given to any prospective Buyer or Tenant.

SITE PLAN – APPROVED

FLORIDA'S
TURNPIKE
EXIT/ENTRANCE



**SOUTHEAST
RETAIL ADVISORS**

CONTACT INFO
LINDSEY MEYERS, Principal | Broker
Lindsey@sracre.com
404.556.4960

851 Broken Sound Parkway NW, Suite 160, Boca Raton, FL 33487 | www.sracre.com

*The information herein was obtained from third parties. Any and all interested parties should have their choice of experts inspect the property and verify all information. Southeast Retail Advisors, Inc. makes no warranties or guarantees as to the information given to any prospective Buyer or Tenant.