



OFFICE SPACE FOR LEASE

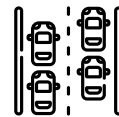
750 SW 24th Street, Moore, OK 73160



CLASS A OFFICE SPACE AVAILABLE FOR LEASE

Lease Rate:	\$22.00 SF/yr (NNN)
Building Class:	A
Year Built:	2015
Building Size:	56,161 sf
Available SF:	4,800 - 16,000 sf
Ceiling Height:	11' Drop 15' Raw
Parking Spaces:	225 Paved
Market:	South Moore
Cross Streets:	SW 24th St. and Fritts Blvd.

PROPERTY HIGHLIGHTS



Easy Road and Highway Access



Scenic Landscaping, with Pond View

PROPERTY OVERVIEW

This 3-story Class A office development, located just south of one of Moore's largest retail areas. Beautiful landscaping, geothermal building qualities, convenient highway access, close proximity to retail and restaurants, a white box condition makes this the perfect space for a 20-128 person organization.

TOM VAUGHT - BROKER
405.500-1031
tom@victorycre.com
victorycre.com

The information listed above has been obtained from sources we believe to be reliable, however, we accept no responsibility for its correctness.



OFFICE SPACE FOR LEASE

750 SW 24th Street, Moore, OK 73160



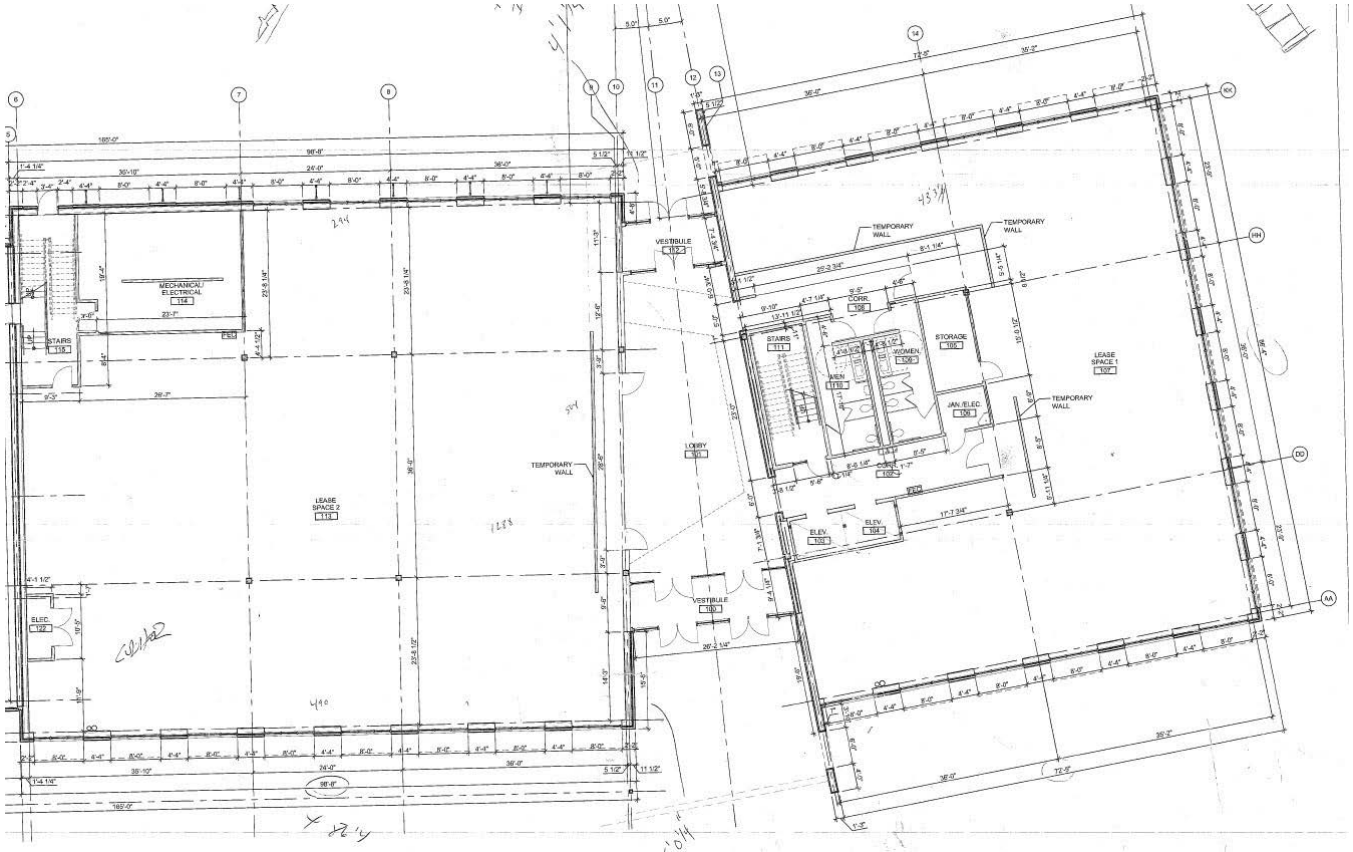
TOM VAUGHT - BROKER
405.500-1031
tom@victorycre.com
victorycre.com

The information listed above has been obtained from sources we believe to be reliable, however, we accept no responsibility for its correctness.

OFFICE SPACE FOR LEASE

750 SW 24th Street, Moore, OK 73160

FLOORPLAN



NEARBY BUSINESSES

- TARGET
- STARBUCKS
- CHICK-FIL-A
- CHIPOTLE
- BUFFALO WILD WINGS
- WALMART
- GOLD'S GYM
- BEST BUY

TOM VAUGHT - BROKER
405.500-1031
tom@victorycre.com
victorycre.com

The information listed above has been obtained from sources we believe to be reliable, however, we accept no responsibility for its correctness.