

# MID WESTCHESTER EXECUTIVE PARK

200 Saw Mill River Road, Hawthorne, New York



**8,805 RSF AVAILABLE Q2 2026**

**CONTACT EXCLUSIVE LISTING AGENTS:**

**WILLIAM ANSON**  
914.968.8500 X 329  
[WANSON@RMFRIEDLAND.COM](mailto:WANSON@RMFRIEDLAND.COM)

**KEVIN LANGTRY**  
914.968.8500 X 322  
[KLANGTRY@RMFRIEDLAND.COM](mailto:KLANGTRY@RMFRIEDLAND.COM)

**RM FRIEDLAND**

COMMERCIAL REAL ESTATE SERVICES

440 Mamaroneck Ave | Harrison, NY 10528 | [rmfriedland.com](http://rmfriedland.com) | 914.968.8500

**8,805 RSF AVAILABLE Q2 2026**

# MID WESTCHESTER EXECUTIVE PARK

200 Saw Mill River Road, Hawthorne, New York

## CURRENT CONFIGURATION

**OFFICE: 1,215 SF**

**WAREHOUSE: 7,590 SF**

**\*ALL SPACES CAN BE RECONFIGURED  
TO MEET TENANT'S REQUIREMENT**

## DOCKS:

4 Loading Docks  
(Ramp can be added to Dock)

## CEILING HEIGHT:

14' Clear

## MISC:

Sprinklers, gas, and  
separate meters

## TRANSPORTATION:

Easy access to NYST—  
I-87, Cross Westchester  
Expressway, I-287, Saw Mill  
River Pkwy and Sprain Pkwy,  
Rte 9A, and Bus

## NEIGHBORHOOD:

Convenient to hotels,

## CONTACT:

William Anson

914.968.8500 ext 329

Kevin Langtry

914.968.8500 ext 322



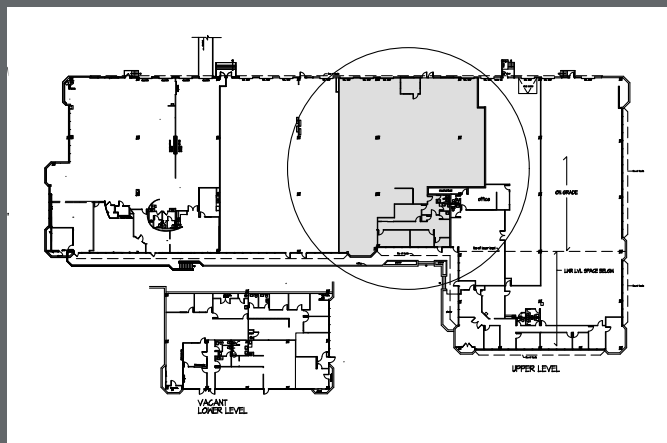
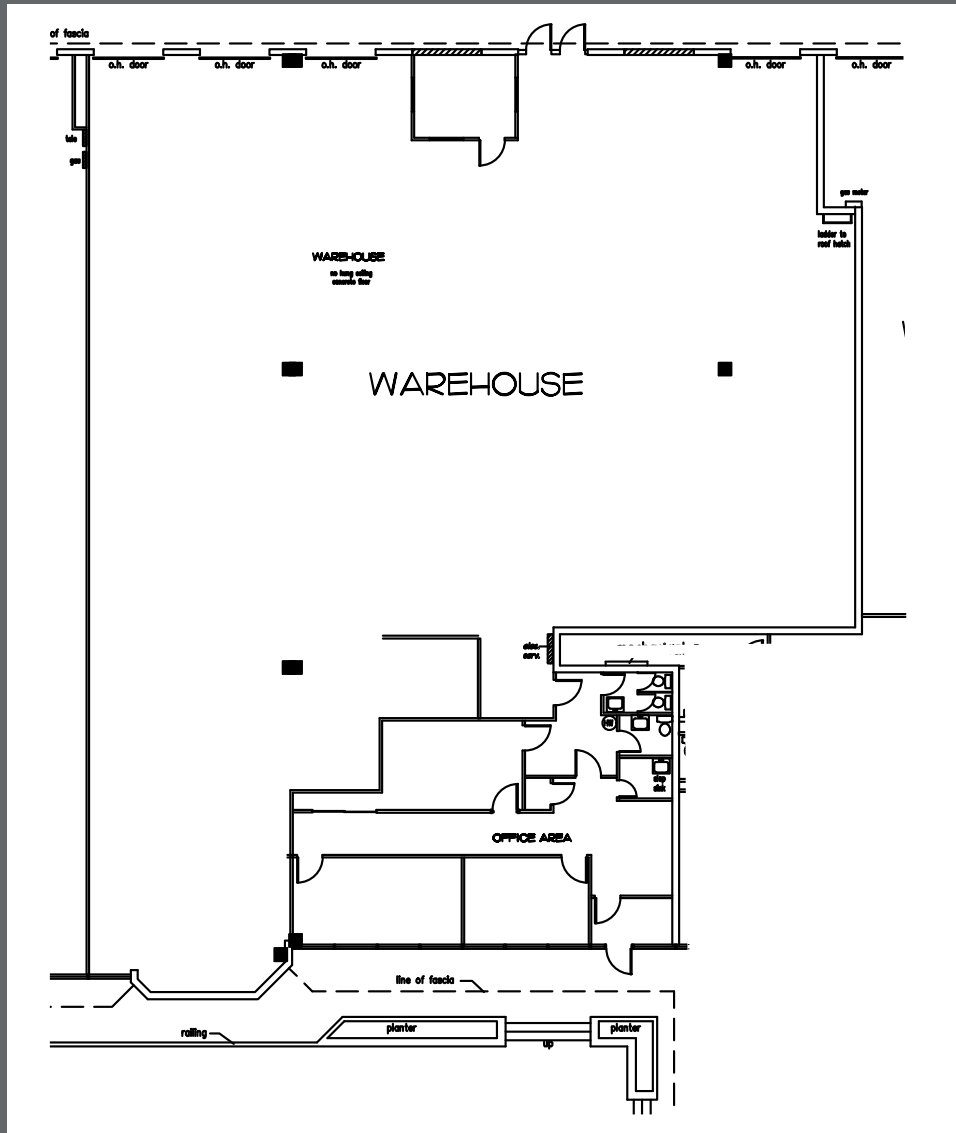
All information contained herein is based upon information which we consider reliable, but because it has been supplied by third parties, we cannot represent that it is accurate or complete, and it should not be relied upon as such. The offerings are subject to errors, omissions, changes, including price, or withdrawal without notice. The content is provided without warranties of any kind, either express or implied. RM Friedland, LLC, its agents or employees shall not be held liable to anyone for any errors, omissions or inaccuracies under any circumstances. You and your advisors should conduct a careful, independent examination of the property to determine to your satisfaction the suitability of the property for your needs.



**8,805 RSF AVAILABLE Q2 2026**

# MID WESTCHESTER EXECUTIVE PARK

200 Saw Mill River Road, Hawthorne, New York



## CONTACT:

William Anson  
914.968.8500 ext 329

Kevin Langtry  
914.968.8500 ext 322

All information contained herein is based upon information which we consider reliable, but because it has been supplied by third parties, we cannot represent that it is accurate or complete, and it should not be relied upon as such. The offerings are subject to errors, omissions, changes, including price, or withdrawal without notice. The content is provided without warranties of any kind, either express or implied. RM Friedland, LLC, its agents or employees shall not be held liable to anyone for any errors, omissions or inaccuracies under any circumstances. You and your advisors should conduct a careful, independent examination of the property to determine to your satisfaction the suitability of the property for your needs.

**8,805 RSF AVAILABLE Q2 2026**

# MID WESTCHESTER EXECUTIVE PARK

200 Saw Mill River Road, Hawthorne, New York



## CONTACT EXCLUSIVE LISTING AGENTS:

**WILLIAM ANSON**  
914.968.8500 X 329  
[WANSON@RMFRIEDLAND.COM](mailto:WANSON@RMFRIEDLAND.COM)

**KEVIN LANGTRY**  
914.968.8500 X 322  
[KLANGTRY@RMFRIEDLAND.COM](mailto:KLANGTRY@RMFRIEDLAND.COM)

**RM FRIEDLAND**  
COMMERCIAL REAL ESTATE SERVICES

440 Mamaroneck Ave | Harrison, NY 10528 | [rmfriedland.com](http://rmfriedland.com) | 914.968.8500

All information contained herein is based upon information which we consider reliable, but because it has been supplied by third parties, we cannot represent that it is accurate or complete, and it should not be relied upon as such. The offerings are subject to errors, omissions, changes, including price, or withdrawal without notice. The content is provided without warranties of any kind, either express or implied. RM Friedland, LLC, its agents or employees shall not be held liable to anyone for any errors, omissions or inaccuracies under any circumstances. You and your advisors should conduct a careful, independent examination of the property to determine to your satisfaction the suitability of the property for your needs.