



Each office independently owned and operated

FOR SALE | LAND

RE/MAX ADVANTAGE

1331 W. Omaha St. | Ste 200
Rapid City, SD 57701
605.343.7653

LOT J HWY 212, EAGLE BUTTE SD

LOT J HWY 212, EAGLE BUTTE, SD 57625



PRESENTED BY:

RANDY OLIVIER, CCIM

Commercial Broker

O: 605.343.7653

C: 605.430.6246

randyolivier@remax.net

SD #15377

DISCLAIMER

The information contained in the following offering memorandum is proprietary and strictly confidential. It is intended to be reviewed only by the party receiving it from RE/MAX Advantage and it should not be made available to any other person or entity without the written consent of RE/MAX Advantage.

By taking possession of and reviewing the information contained herein the recipient agrees to hold and treat all such information in the strictest confidence.

The recipient further agrees that recipient will not photocopy or duplicate any part of the offering memorandum. If you have no interest in the subject property, please promptly return this offering memorandum to RE/MAX Advantage.

This offering memorandum has been prepared to provide summary, unverified financial and physical information to prospective purchasers, and to establish only a preliminary level of interest in the subject property.

The information contained herein is not a substitute for a thorough due diligence investigation.

RE/MAX Advantage has not made any investigation, and makes no warranty or representation with respect to the income or expenses for the subject property, the future projected financial performance of the property, the size and square footage of the property and improvements, the presence of absence of contaminating substances, PCBs or asbestos, the compliance with local, state and federal regulations, the physical condition of the improvements thereon, or financial condition or business prospects of any tenant, or any tenant's plans or intentions to continue its occupancy of the subject property.

The information contained in this offering memorandum has been obtained from sources we believe reliable; however, RE/MAX Advantage has not verified, and will not verify, any of the information contained herein, nor has RE/MAX Advantage conducted any investigation regarding these matters and makes no warranty or representation whatsoever regarding the accuracy or completeness of the information provided.

All potential buyers must take appropriate measures to verify all of the information set forth herein.

Prospective buyers shall be responsible for their costs and expenses of investigating the subject property.

TABLE OF CONTENTS

PROPERTY INFORMATION

- 4 EXECUTIVE SUMMARY
- 5 PROPERTY DESCRIPTION
- 6 COMPLETE HIGHLIGHTS
- 7 ADDITIONAL PHOTOS

LOCATION INFORMATION

- 9 AERIAL MAP
- 10 REGIONAL MAP

FINANCIAL ANALYSIS

- 12 FINANCIAL SUMMARY

DEMOGRAPHICS

ADVISOR BIOS

- 15 ADVISOR BIO 1

1

PROPERTY INFORMATION

IN THIS SECTION

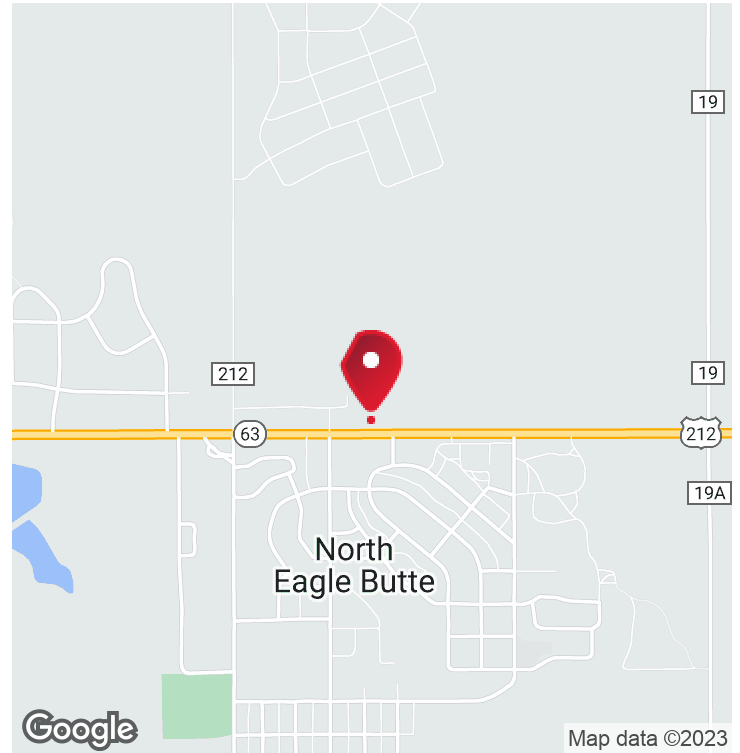
EXECUTIVE SUMMARY

PROPERTY DESCRIPTION

COMPLETE HIGHLIGHTS

ADDITIONAL PHOTOS

EXECUTIVE SUMMARY



OFFERING SUMMARY

Sale Price:	\$370,000
Lot Size:	0.91 Acres
Price / Acre:	\$406,593
Zoning:	General Commercial

PROPERTY OVERVIEW

High visibility, flat, commercial lot with curb cut in place along the North side of Highway 212 in Eagle Butte for sale! The Eagle Stop gas/convenience store to the immediate West is home to a Dairy Queen and a Taco John's, so there is great historic traffic activity in place! There are currently two access points from the highway; one of which is a shared driveway with the Horizon Family Health Center to the East. Water and sewer are available along the North of the lot and electric currently comes in overhead to an existing 16x24 (apx) metal building that appears to be in decent structural shape and features an overhead garage door along the highway side of the building. The current owner had some preliminary site plans put together and we can share these if you are interested. A large youth population could certainly support multiple business opportunities!

PROPERTY HIGHLIGHTS

- Highway frontage
- Utilities in place
- Preliminary site plans available

LAND
FOR SALE

RE/MAX ADVANTAGE

Each office independently owned and operated

1331 W. Omaha St. | Ste 200
Rapid City, SD 57701

605.343.7653

PROPERTY DESCRIPTION



PROPERTY DESCRIPTION

High visibility, flat, commercial lot with curb cut in place along the North side of Highway 212 in Eagle Butte for sale! The Eagle Stop gas/convenience store to the immediate West is home to a Dairy Queen and a Taco John's, so there is great historic traffic activity in place! There are currently two access points from the highway; one of which is a shared driveway with the Horizon Family Health Center to the East. Water and sewer are available along the North of the lot and electric currently comes in overhead to an existing 16x24 (apx) metal building that appears to be in decent structural shape and features an overhead garage door along the highway side of the building. The current owner had some preliminary site plans put together and we can share these if you are interested. A large youth population could certainly support multiple business opportunities!

LOCATION DESCRIPTION

Highway frontage, next to Eagle stop gas station/C-store, Dairy Queen and Taco Johns. Black Hills Federal Credit Union just to the East.

LAND
FOR SALE

RE/MAX ADVANTAGE

Each office independently owned and operated

1331 W. Omaha St. | Ste 200
Rapid City, SD 57701

605.343.7653

COMPLETE HIGHLIGHTS



PROPERTY HIGHLIGHTS

- Highway frontage
- Utilities in place
- Preliminary site plans available



LAND
FOR SALE

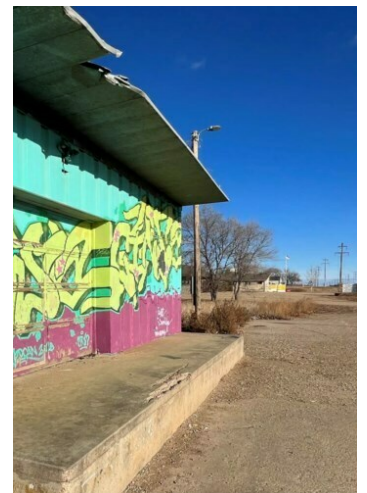
RE/MAX ADVANTAGE

Each office independently owned and operated

1331 W. Omaha St. | Ste 200
Rapid City, SD 57701

605.343.7653

ADDITIONAL PHOTOS



LAND
FOR SALE

RE/MAX ADVANTAGE
Each office independently owned and operated

1331 W. Omaha St. | Ste 200
Rapid City, SD 57701

605.343.7653

2

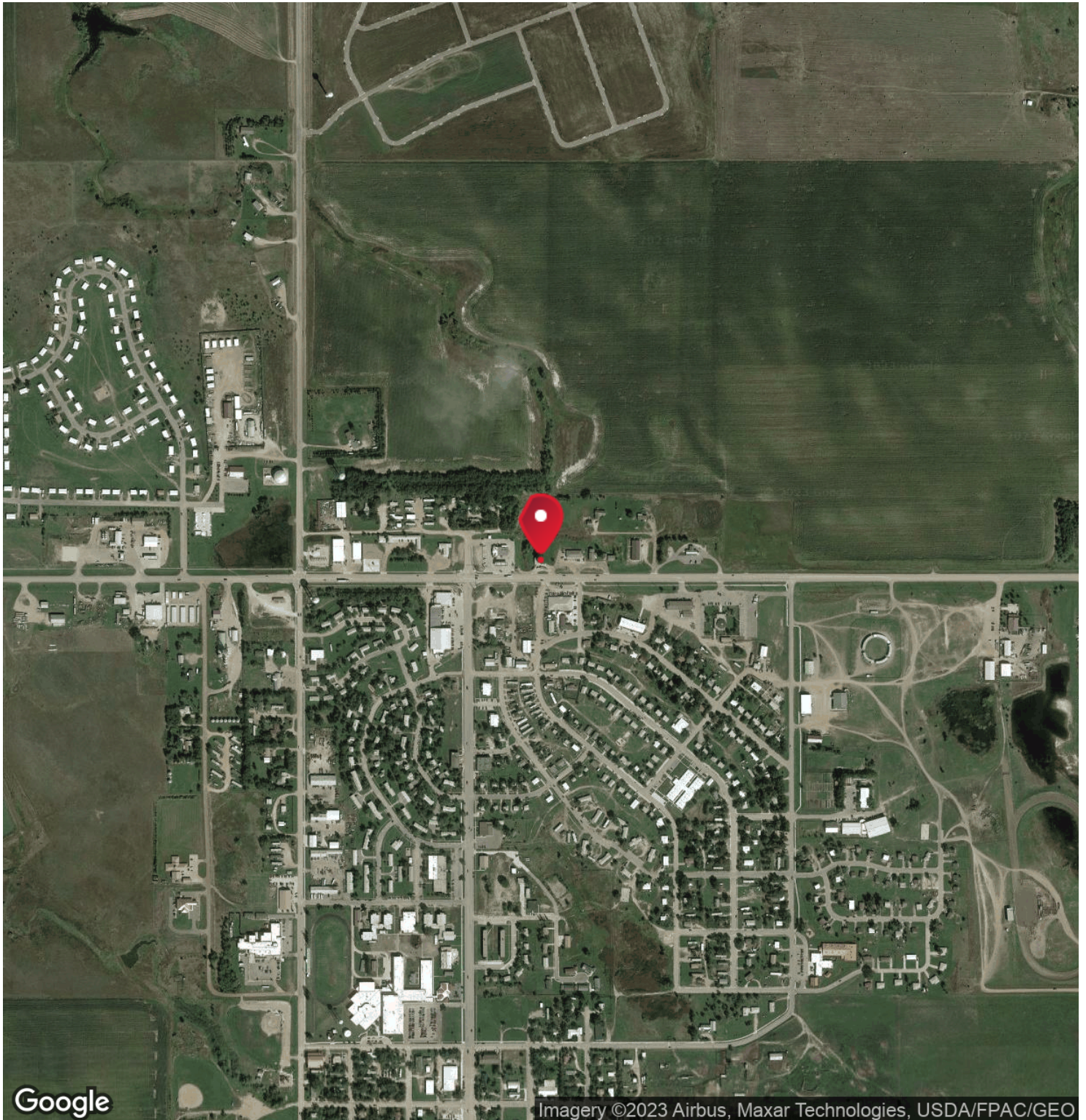
LOCATION INFORMATION

IN THIS SECTION

AERIAL MAP

REGIONAL MAP

AERIAL MAP



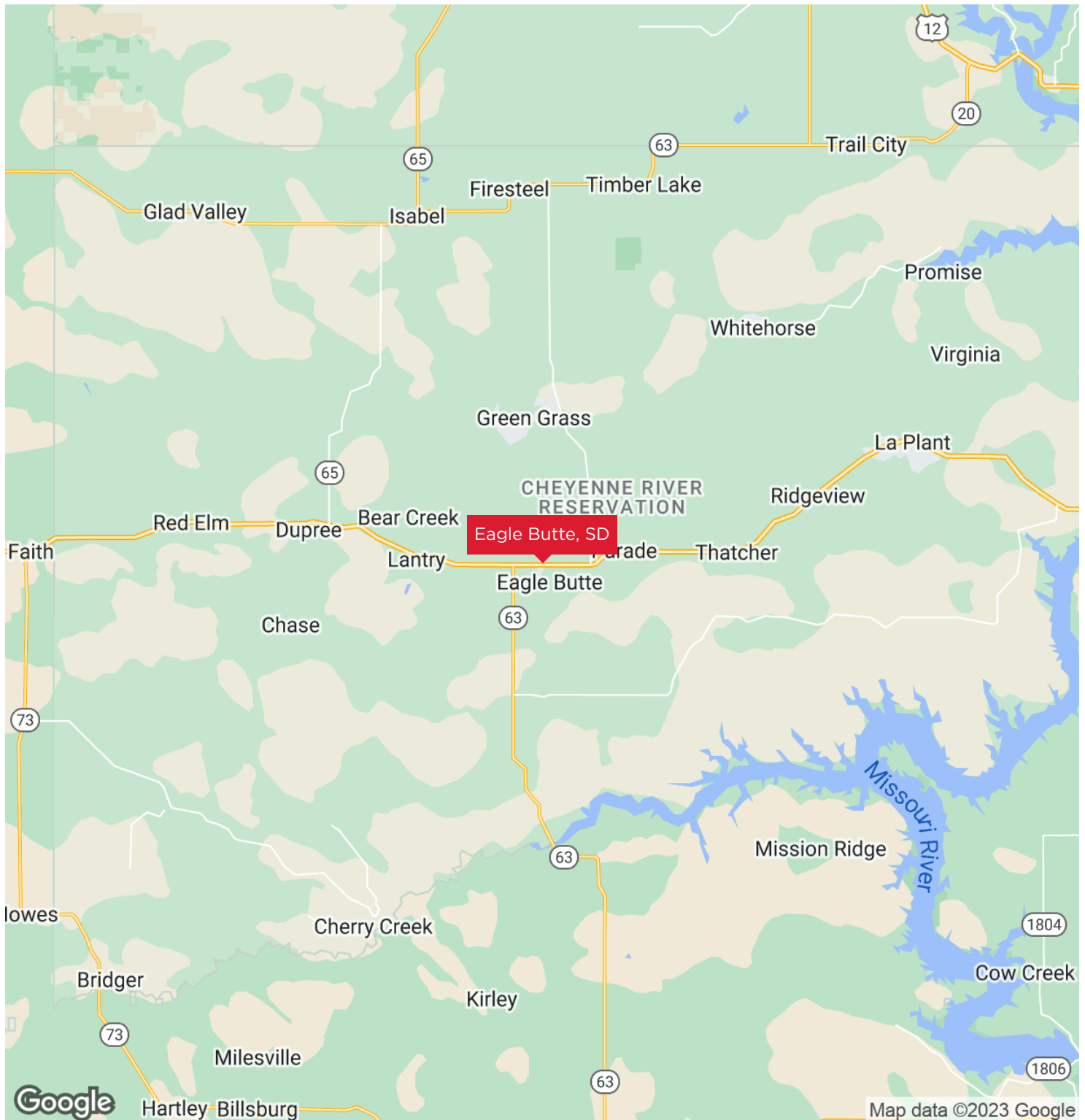
LAND
FOR SALE

RE/MAX ADVANTAGE
Each office independently owned and operated

1331 W. Omaha St. | Ste 200
Rapid City, SD 57701

605.343.7653

REGIONAL MAP



LAND
FOR SALE

RE/MAX ADVANTAGE
Each office independently owned and operated

1331 W. Omaha St. | Ste 200
Rapid City, SD 57701

605.343.7653

3

FINANCIAL ANALYSIS

IN THIS SECTION

FINANCIAL SUMMARY

FINANCIAL SUMMARY

INVESTMENT OVERVIEW

LOT J HWY 212, EAGLE BUTTE SD

Price	\$370,000
Price per SF	\$9

LAND
FOR SALE

P 12**RE/MAX ADVANTAGE**

Each office independently owned and operated

1331 W. Omaha St. | Ste 200
Rapid City, SD 57701

605.343.7653

4

DEMOGRAPHICS

IN THIS SECTION

5

ADVISOR BIOS

IN THIS SECTION

ADVISOR BIO 1

//ADVISOR BIO 1

**RANDY OLIVIER, CCIM****Commercial Broker**

randyolivier@remax.net

Direct: **605.343.7653** | Cell: **605.430.6246**

SD #15377

PROFESSIONAL BACKGROUND

After graduating from college, I spent some time in a regional CPA firm learning about audit trails, small and large businesses, tax returns, and business plans. Incredible experience! Then moved into the retail and corporate world of FootLocker, Harley Davidson, Hobby Lobby, and Walmart. Walmart selected me to participate in a 3-month, top-talent leadership academy where we were able to deep dive into how the world's largest retailer thinks, operates and executes its business model. This amazing experience gave me such great insight; from land selection and acquisition to distribution centers to new construction to operations in the store. This background was very useful and helpful in the decision to transition into commercial real estate in 2013, where the first transaction was helping a client purchase an Office Max building and property in Rapid City, SD.

In 2017, I earned my CCIM (Certified Commercial Investment Member) designation; the gold standard in the real estate investment industry. The CCIM designation represents proven expertise in financial, market, user, and investment analysis, as well as negotiations.

With this real-world experience, track record, and education, we can work towards minimizing your risk, maximizing the return on your investment, and optimizing the value of your real estate. We can make better-informed decisions and develop a comprehensive commercial real estate strategy for you. Let's get started!

EDUCATION

Bachelor's Degree (i.e. BA, AB, BS)ACCOUNTINGChadron State College 1995

Bachelor's Degree (i.e. BA, AB, BS)MANAGEMENTChadron State College 1995

CCIM Institute / Certified Commercial Investment Member 20017

MEMBERSHIPS

Volunteer Work:

Workforce Development Chairman for SD Home Builders Association.

Military Affairs Chairman-Ellsworth AFB, SD Ntl Guard, RC Chamber.

Production:

2020 and 2022 - RE/MAX top commercial producer - South Dakota.

RE/MAX Advantage

1331 W. Omaha St. Ste 200

Rapid City, SD 57701

605.343.7653

**LAND
FOR SALE****P 15**