

# 62 CROSBY STREET

BETWEEN SPRING & BROOME STREETS | SOHO





# 62 CROSBY STREET

BETWEEN SPRING & BROOME STREETS | SOHO

## PROPERTY HIGHLIGHTS

- Turnkey fitness opportunity, equipped with showers, restrooms, & equipment in place
- High foot traffic area
- Situated in the heart of SoHo's prime retail corridor
- Neighboring tenants include:  
*Lululemon, Balthazar, Edikted, Dune, Skechers, Club Monaco, J. Crew, Allbirds, Starbucks, Krewé, Patagonia, Glossier, Marc Jacobs, Broken Coconut, Blank Street Coffee, Valcucine, Oak + Fort, & many more!*

**SIZE:** 500 SF Ground Floor  
3,800 SF Lower Level

**FRONTAGE:** 15'

**POSSESSION:** ASAP

**ASKING RENT:** Upon Request

**TRANSPORTATION:** R W 6

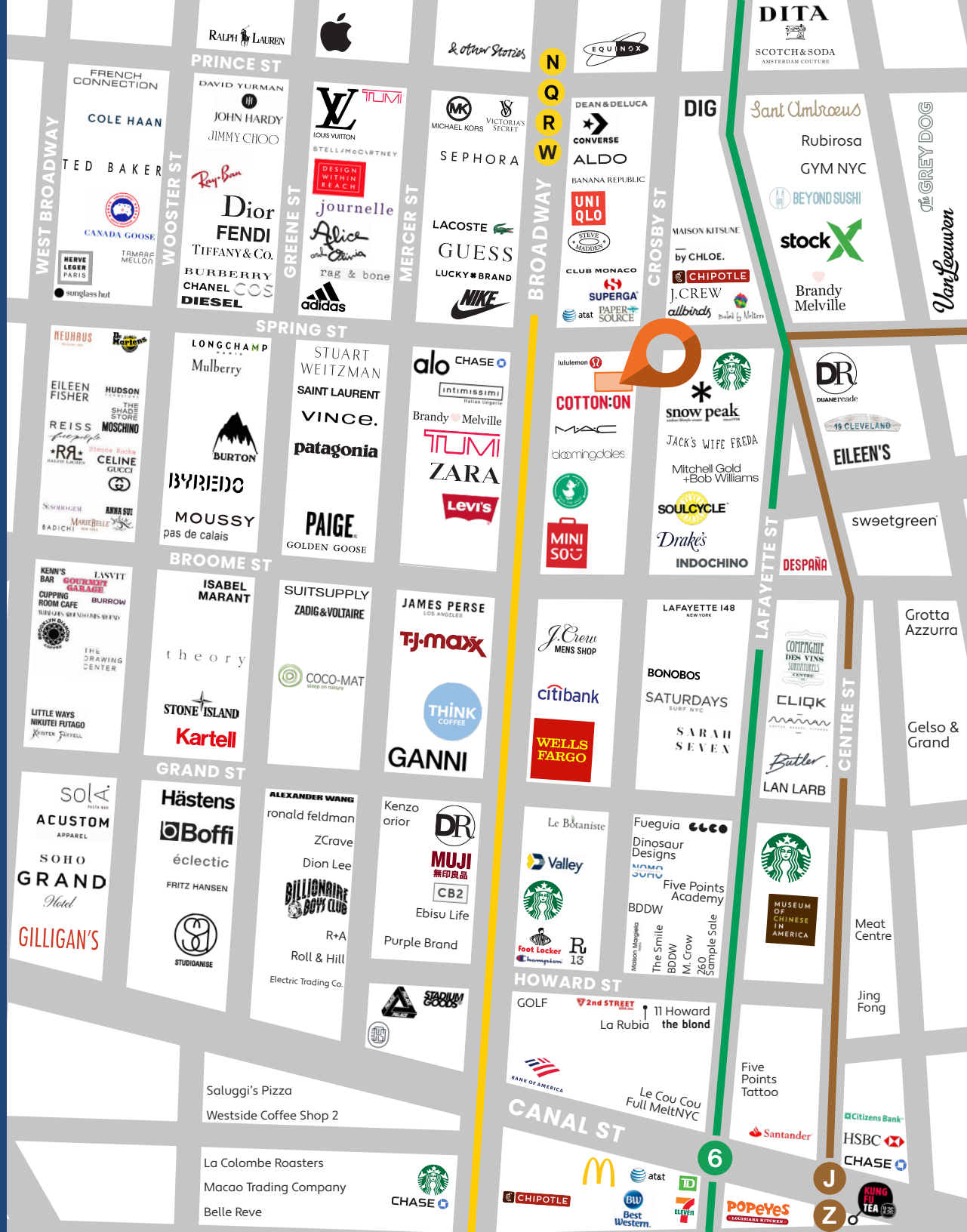
CONTACT OUR BROKERS FOR MORE INFORMATION

**CAROLINA AZIZ**  
CAziz@ksrny.com  
516.640.6961

**IKE BIBI**  
IBibi@ksrny.com  
347.417.2860



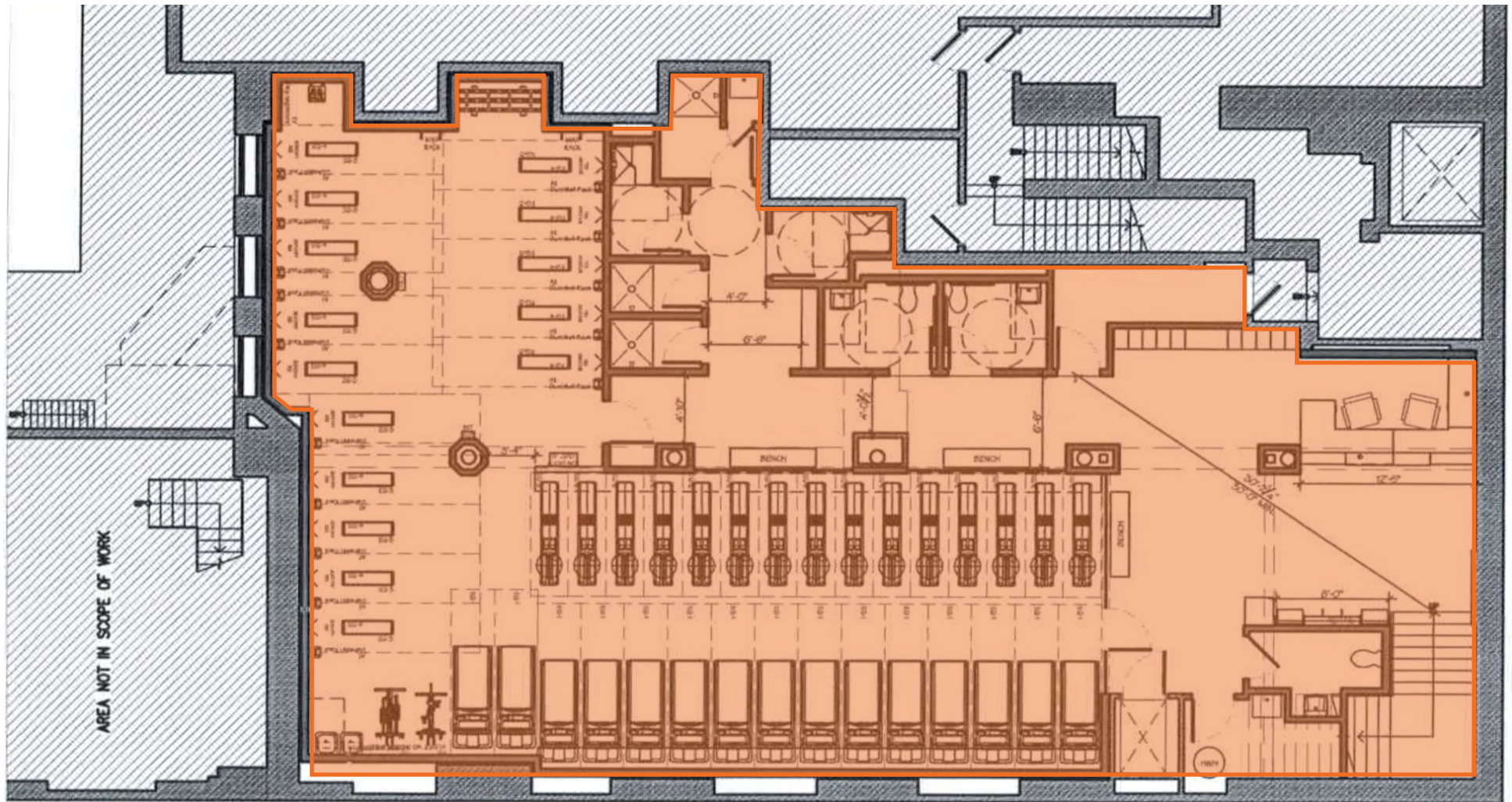
All information supplied in this marketing presentation and/or flyer is from sources deemed reliable and is furnished subject to errors, omissions, modifications, removal of listings from sale/lease and to any listing condition. Any square footage, dimensions, floor plans and/or technical data set forth are approximations and are subject to further elaboration/confirmation.



# 62 CROSBY STREET

BETWEEN SPRING & BROOME STREETS | SOHO

FLOOR PLANS:  
LOWER LEVEL - 3,800 SF



All information supplied in this marketing presentation and/or flyer is from sources deemed reliable and is furnished subject to errors, omissions, modifications, removal of listings from sale/lease and to any listing condition. Any square footage, dimensions, floor plans and/or technical data set forth are approximations and are subject to further elaboration/confirmation.