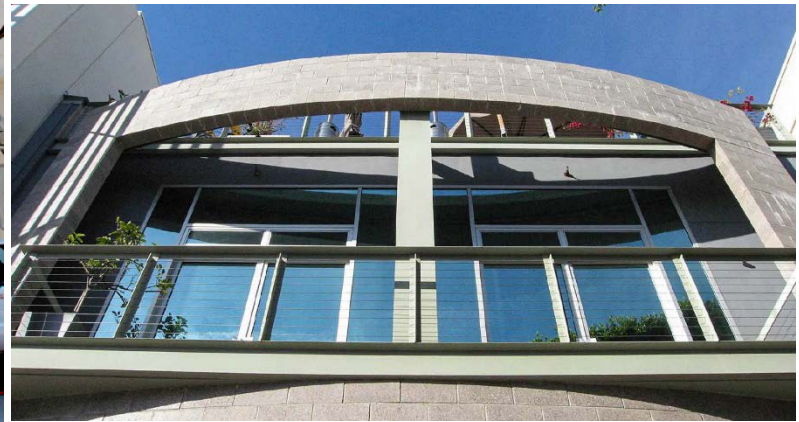


1447 2<sup>nd</sup> Street – Top Two Floors

Creative Office in Santa Monica, California

**BEITLER**

**TCN**  
WORLDWIDE



## **Silicon Beach with Ocean Views!**

- ❖ 1 block from Santa Monica beach with proximity to Shutters, Loews, Casa del Mar, the Viceroy hotels, 3rd St. Promenade
- ❖ Private balconies, two skylights
- ❖ Security cameras, card key access
- ❖ Exposed ceilings and concrete floors
- ❖ Secured parking / next to public parking structure
- ❖ Combination of private offices, work stations & open area
- ❖ Great for tech, internet, production, architect & creative uses
- ❖ Jinky's Cafe on ground floor

## **MONTHLY ASKING RATE**

**\$3.95/SF MG**

## **SIZE**

3rd floor: 6,756sf

4th floor: 5,500sf

12,256sf contiguous

## **TERM**

3-5 Years

## **PARKING**

Potential on-site and City structures

**CONTACT**

**Mike Rago**

LIC. #01016148

[mrago@beitler.com](mailto:mrago@beitler.com)

310.447.7267

**Dean Heck**

LIC. #00872647

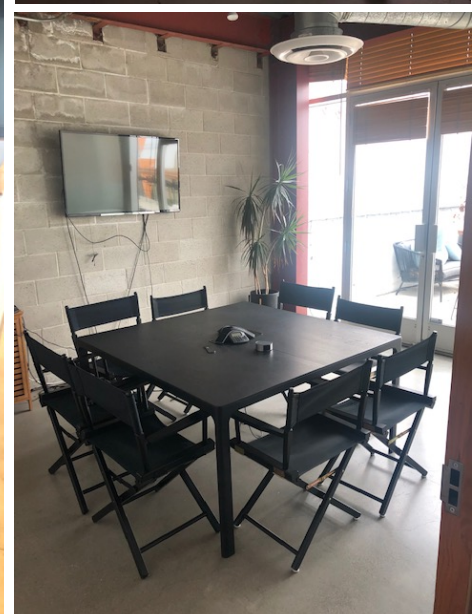
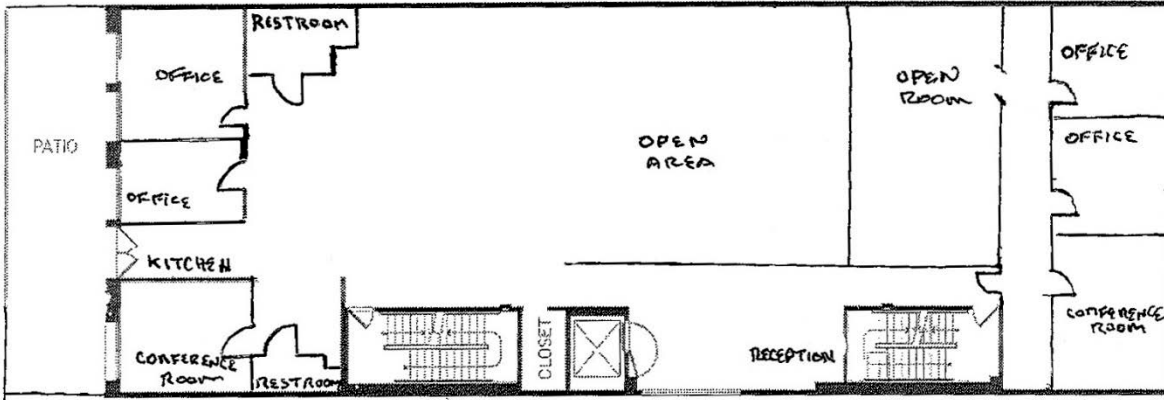
[dheck@beitler.com](mailto:dheck@beitler.com)

310.447.7239

BCRS – LIC. # 00808850 • 825 S. Barrington Avenue • Los Angeles, CA 90049 • Ph: (310) 820-2955 • Fx: (310) 820-7224

The information above has been obtained from sources deemed reliable. While we do not doubt its accuracy, we have not verified it and make no guarantee, warranty or representation about it. It is your responsibility to independently confirm its accuracy and completeness. Any projections, opinions, assumptions or estimates used are for illustration only and do not represent the current or future performance of the property. You and your advisors should conduct a thorough, independent investigation of the property to determine to your satisfaction the suitability of the property for your needs.

### Third Floor

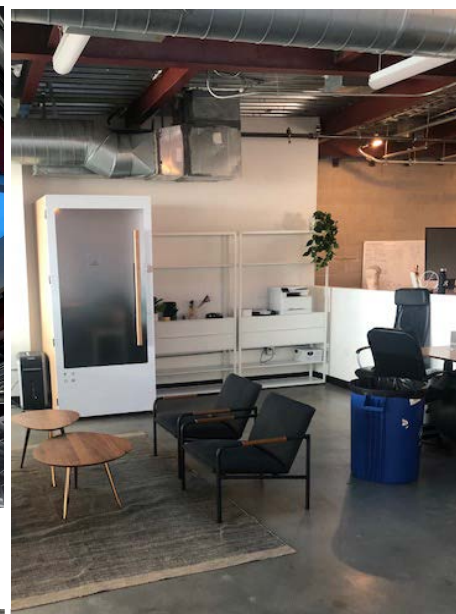
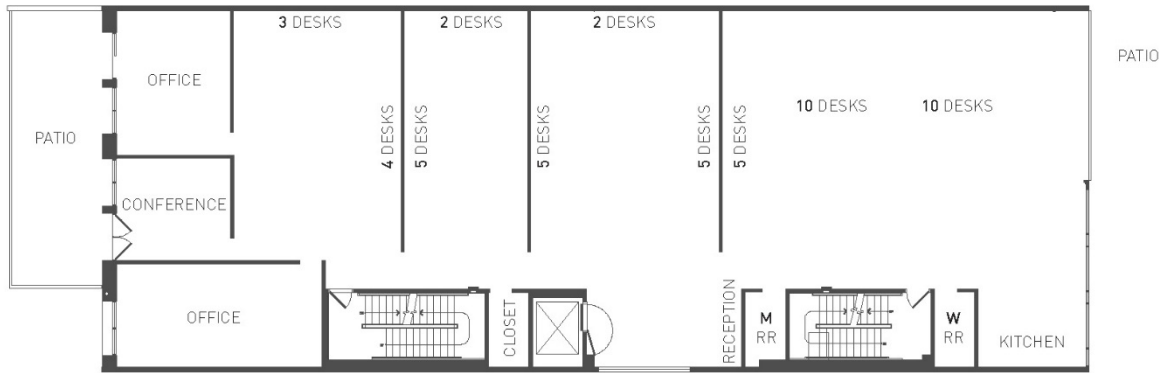


# 1447 2<sup>nd</sup> Street – Top Two Floors Creative Office in Santa Monica, California

**BEITLER**

**TCN**  
WORLDWIDE

## Fourth Floor



BCRS – LIC. # 00808850 • 825 S. Barrington Avenue, Los Angeles, CA 90049 • Ph: (310) 820-2955 • Fx: (310) 820-7224

The information above has been obtained from sources deemed reliable. While we do not doubt its accuracy, we have not verified it and make no guarantee, warranty or representation about it. It is your responsibility to independently confirm its accuracy and completeness. Any projections, opinions, assumptions or estimates used are for illustration only and do not represent the current or future performance of the property. You and your advisors should conduct a thorough, independent investigation of the property to determine to your satisfaction the suitability of the property for your needs.