

FOR SUBLEASE

±5,896 SF Fully Furnished Office
\$1.79/SF, FS Through 6/30/2025

2998 DOUGLAS BLVD | SUITE 300, ROSEVILLE, CA



For leasing
information
contact

JON WALKER, SVP, SHAREHOLDER
Kidder Mathews
916.751.3631
jon.walker@kidder.com
LIC N° 01204666

LARRY EASTERLY, MCR
Colliers International
Executive Vice President
LIC N° 00958987

KIDDER.COM

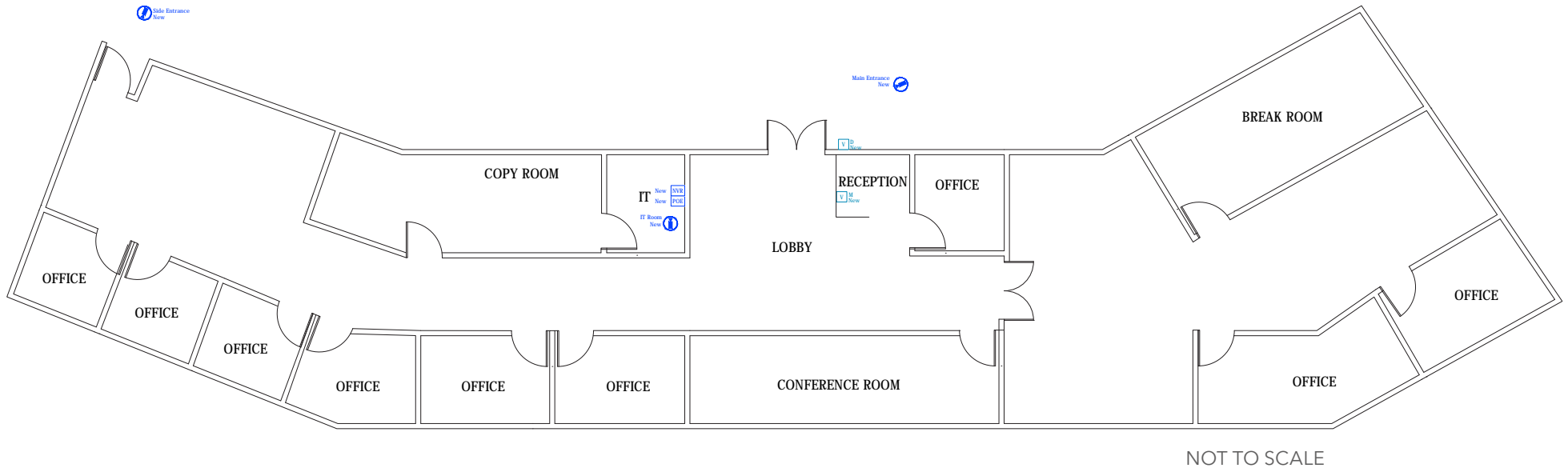


FOR SUBLEASE

2998 Douglas Blvd

SUITE 300, ROSEVILLE, CA

Suite 300 Floor Plan



Property Highlights

\$130,000 in high quality furniture

FULLY FURNISHED and move-in ready

BEAUTIFUL window lined suite with lots of natural light

LOCATED RIGHT of the 3rd floor elevator lobby

AMPLE parking

KIDDER.COM

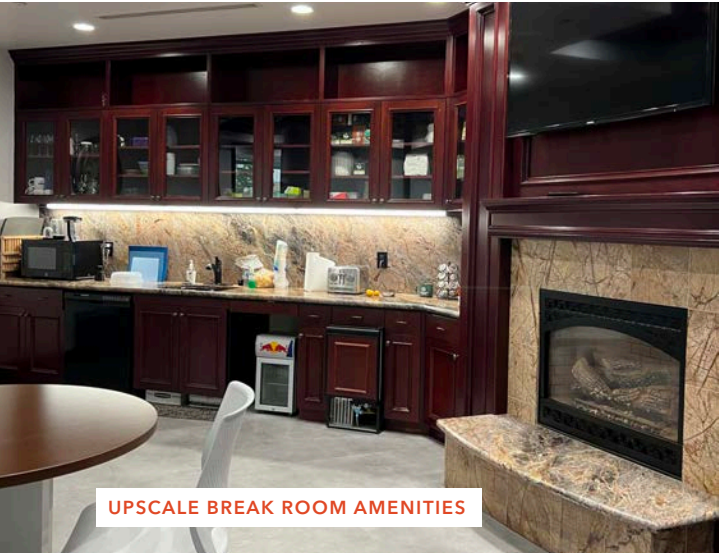
This information supplied herein is from sources we deem reliable. It is provided without any representation, warranty, or guarantee, expressed or implied as to its accuracy. Prospective Buyer or Tenant should conduct an independent investigation and verification of all matters deemed to be material, including, but not limited to, statements of income and expenses. Consult your attorney, accountant, or other professional advisor.

km Kidder Mathews

FOR SUBLEASE

2998 Douglas Blvd

SUITE 300, ROSEVILLE, CA



UPSCALE BREAK ROOM AMENITIES



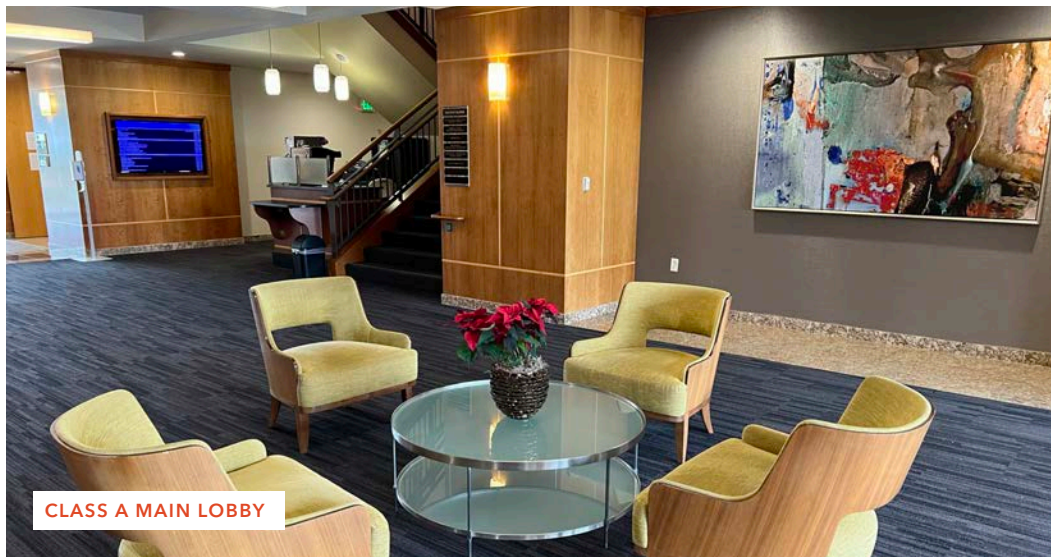
SMALL CONFERENCE ROOM



SPACIOUS PRODUCTION CENTER



LARGE CONFERENCE ROOM



CLASS A MAIN LOBBY

**For subleasing
information contact**

JON WALKER, SVP, SHAREHOLDER

916.751.3631

jon.walker@kidder.com

LIC N° 01204666

KIDDER.COM

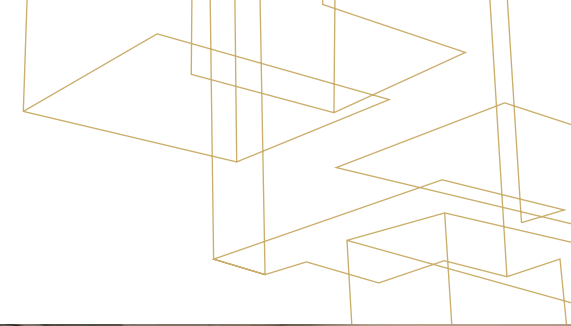
This information supplied herein is from sources we deem reliable. It is provided without any representation, warranty, or guarantee, expressed or implied as to its accuracy. Prospective Buyer or Tenant should conduct an independent investigation and verification of all matters deemed to be material, including, but not limited to, statements of income and expenses. Consult your attorney, accountant, or other professional advisor.



FOR SUBLEASE

2998 Douglas Blvd

SUITE 300, ROSEVILLE, CA



KIDDER.COM

This information supplied herein is from sources we deem reliable. It is provided without any representation, warranty, or guarantee, expressed or implied as to its accuracy. Prospective Buyer or Tenant should conduct an independent investigation and verification of all matters deemed to be material, including, but not limited to, statements of income and expenses. Consult your attorney, accountant, or other professional advisor.

km Kidder Mathews

FOR SUBLEASE

2998 Douglas Blvd

SUITE 300, ROSEVILLE, CA



KIDDER.COM

This information supplied herein is from sources we deem reliable. It is provided without any representation, warranty, or guarantee, expressed or implied as to its accuracy. Prospective Buyer or Tenant should conduct an independent investigation and verification of all matters deemed to be material, including, but not limited to, statements of income and expenses. Consult your attorney, accountant, or other professional advisor.



2998 DOUGLAS BLVD

For leasing information contact

JON WALKER, SVP, SHAREHOLDER
Kidder Mathews
916.751.3631
jon.walker@kidder.com
LIC N° 01204666

LARRY EASTERLY, MCR
Colliers International
Executive Vice President
LIC N° 00958987

KIDDER.COM

This information supplied herein is from sources we deem reliable. It is provided without any representation, warranty, or guarantee, expressed or implied as to its accuracy. Prospective Buyer or Tenant should conduct an independent investigation and verification of all matters deemed to be material, including, but not limited to, statements of income and expenses. Consult your attorney, accountant, or other professional advisor.

