

# Retail Space for Lease

# 228 Berry Street

Williamsburg, Brooklyn, NY

## Location:

Corner of Grand St. Block-Through Along Berry St.  
including the Corner of N 1<sup>st</sup> St.

## Floors:

Ground Floor: 1,600 SF

## Frontage:

60 FT on Grand St + 161 FT on Berry Street  
& 64 FT on N 1<sup>st</sup> St.

## Ceiling Heights:

Ground Floor: 16 FT

## Price: Upon Request

## Highlights:

- Brand new Ground Floor & Lower Level Retail Space at the base of a 50-unit Luxury Residential Building
- 285 FT of wraparound floor-to-ceiling glass frontage on 3 Streets (Grand St., Berry St. & N 1<sup>st</sup> St.)
- Full Block Retail Presence Available
- Landlord can offer a Custom Build-out for Tenant
- All uses considered

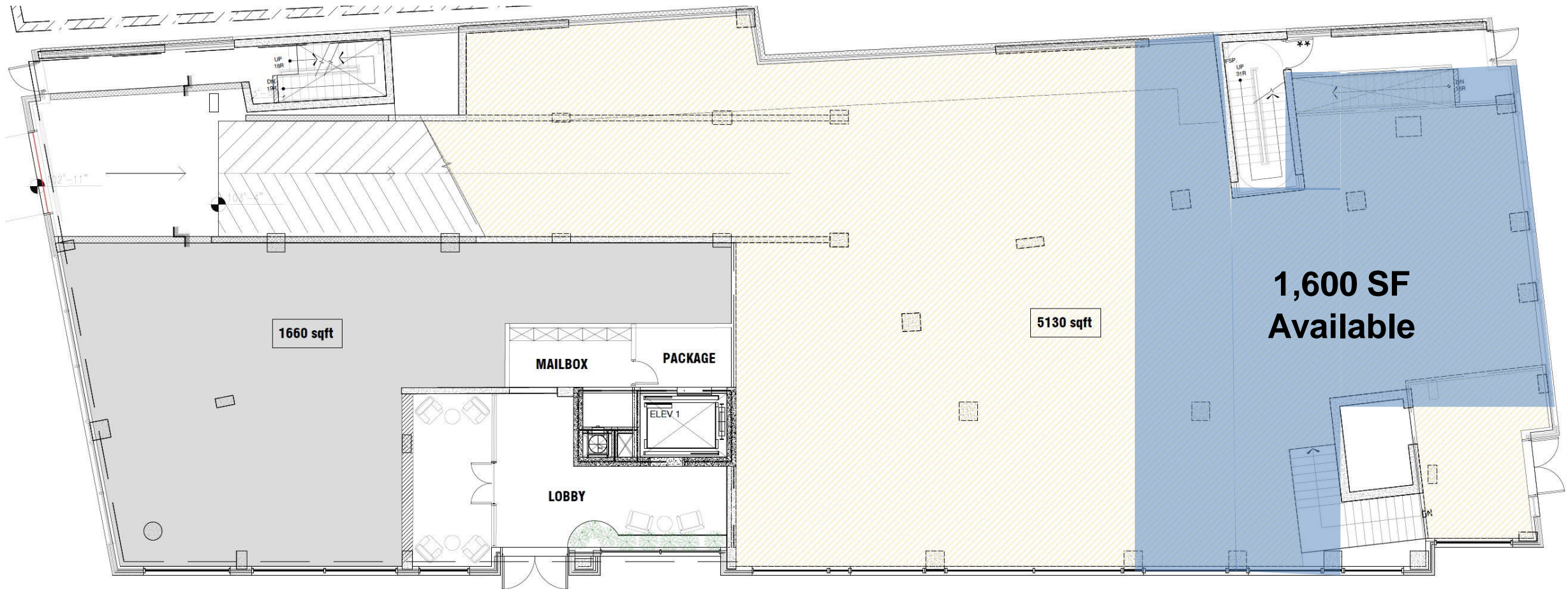


**Call/Text:**  
**516 350 2621**

## Ground Level Photos



## Ground Level Floorplan



**Retail Space: 1,600 SF**

# CONTACT

---

**JOSH SLOAN**

516-350-2621

JS@SLOAN-RE.COM