







What is the good  
of your stars and trees,  
your sunrise and the wind,  
if they do not enter  
into our daily lives?

-E.M. Forster









*combining health,  
nature, and retail  
to enrich the body,  
mind and soul.*

Starting with a vacant weeded lot, The CAMP design took form with new structures utilizing certified redwood, featuring a grass roof, yurt structure, on-site rainwater capture of runoff and drought-tolerant landscaping including herb gardens –  
A “GREEN” CAMPUS.

Travel and hiking seminars, Earth Day celebrations, craft fairs, farmers markets, seasonal harvest celebrations and outdoor yoga demonstrations activate The CAMP community.





Population



AVG.  
Household  
Income



C |   
M | P

Consumer  
Spending





# SoBeCa, an acronym for South on Bristol - entertainment, culture & Arts

The SoBeCa District is the only progressive, lifestyle-culture, specialty retail destination of its kind in Orange County reaching out to local community and surrounding neighborhoods bringing together people with common shared interests in health, arts & culture. SoBeCa is just ½ mile south of South Coast Plaza, bordered by the 405, 55 and 73 freeways on Bristol Street.

## RANDOLPH AVE



Skullcandy



Quiet Golf



WELL DONE  
BUILDING & DESIGN



## BAKER ST



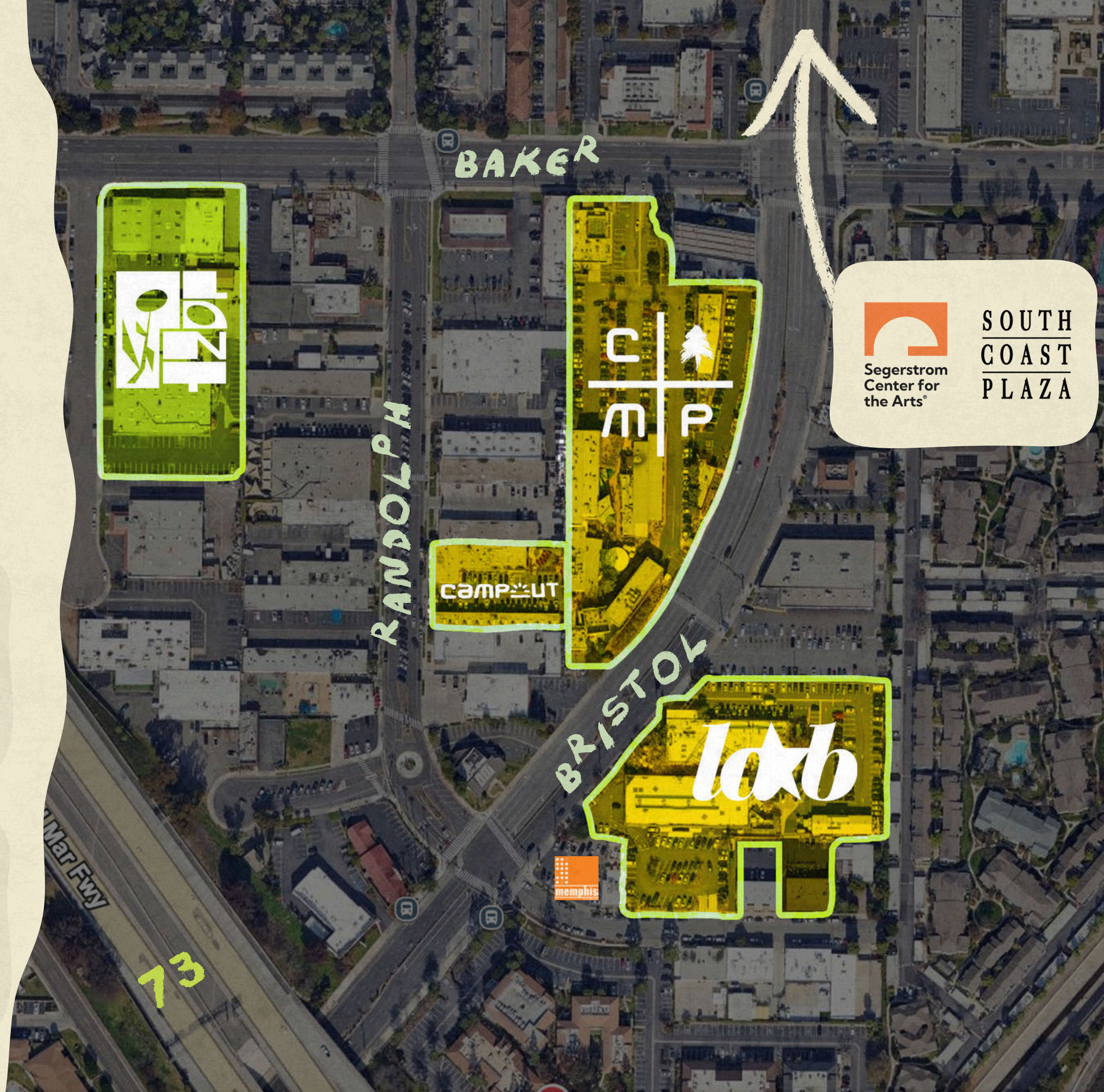
RNDM LAB

DEAR charlie.

ever  
well

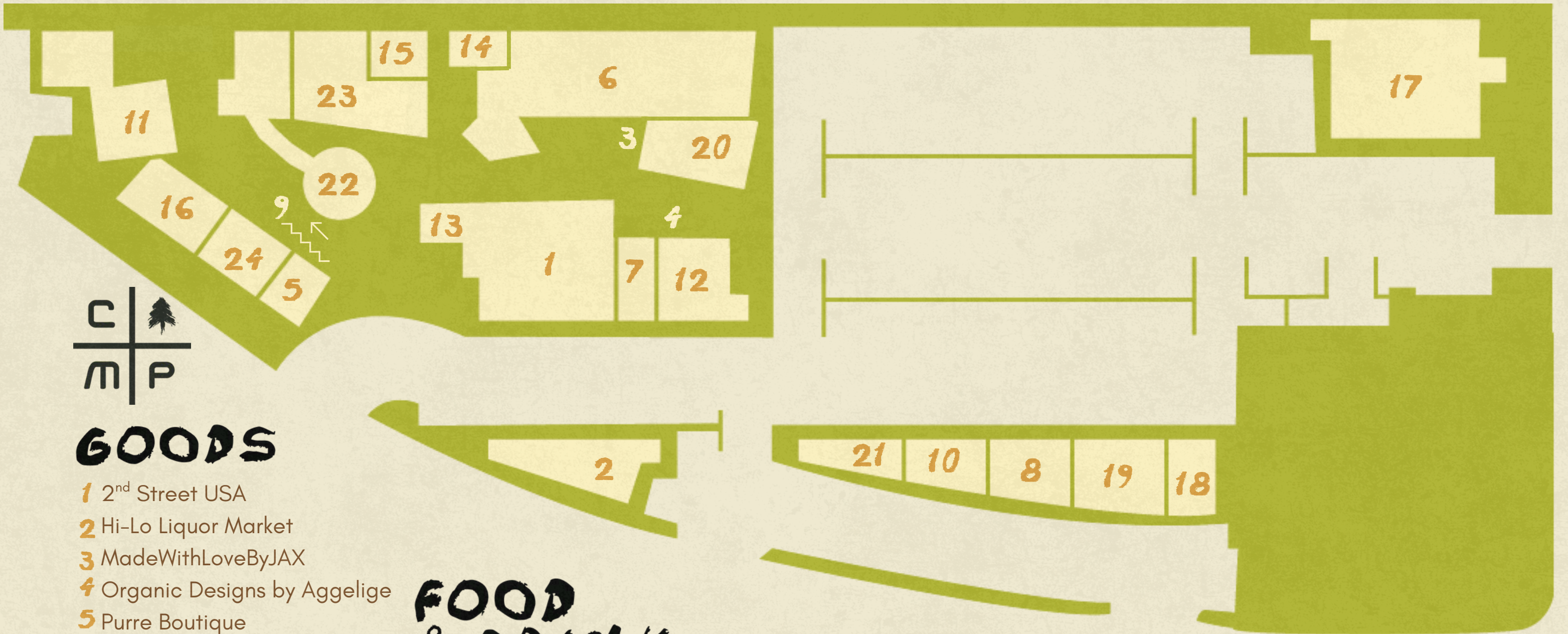
THE  
POTTERY  
STUDIO  
CLAY AND SUPPLY

AGATHUS  
STUDIOS



SOUTH  
COAST  
PLAZA





## GOODS

- 1** 2<sup>nd</sup> Street USA
- 2** Hi-Lo Liquor Market
- 3** MadeWithLoveByJAX
- 4** Organic Designs by Aggelige
- 5** Purre Boutique
- 6** SEED People's Market

## SERVICES

- 7** Lollipop Nail Studio
- 8** Outer Limits Tattoo
- 9** Trim Fitness Studio
- 10** Purrs in Paradise

## FOOD & DRINK

- 11** AhBA
- 12** Bakery (*coming soon*)
- 13** Boba Guys
- 14** Chafinity
- 15** East Borough
- 16** Folks
- 17** Mesa
- 18** Milk + Honey
- 19** Slurpin' Ramen Bar
- 20** Sushi (*coming soon*)
- 21** The Taco Stand
- 22** Restaurant (*coming soon*)
- 23** Vitaly Cafe
- 24** Wine Lab

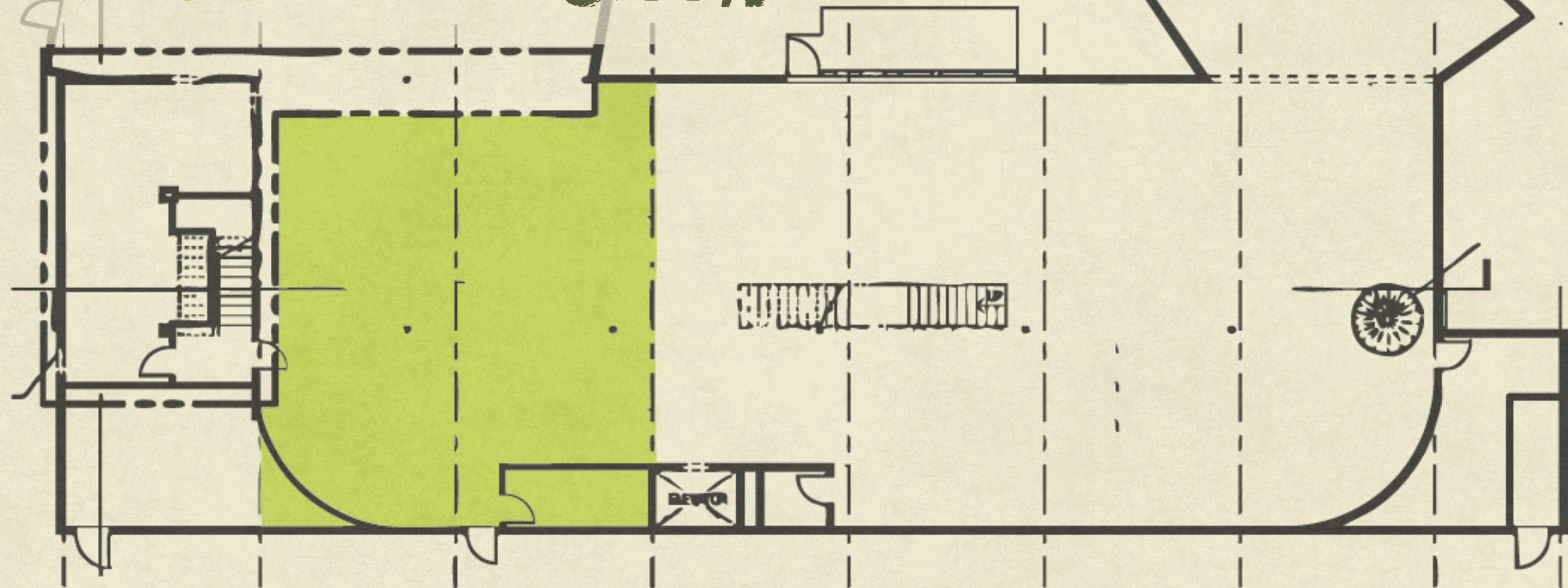
## CAMP:UT (Not Pictured)

- |                    |                         |
|--------------------|-------------------------|
| ARTime Barro       | Cowboys and Poodles     |
| Booth by Bryant    | Salty Bear              |
| Crew Salon         | Work In Progress        |
| Jack Henry Studios | The Inconvenience Store |
| Spark Studios      |                         |



# Available

1st FLOOR Suite C100A



- 1862 Sf
- Shared Restroom
- Part of Space 6 on project map
- can be demised into larger footprint
- Opens to shared common area



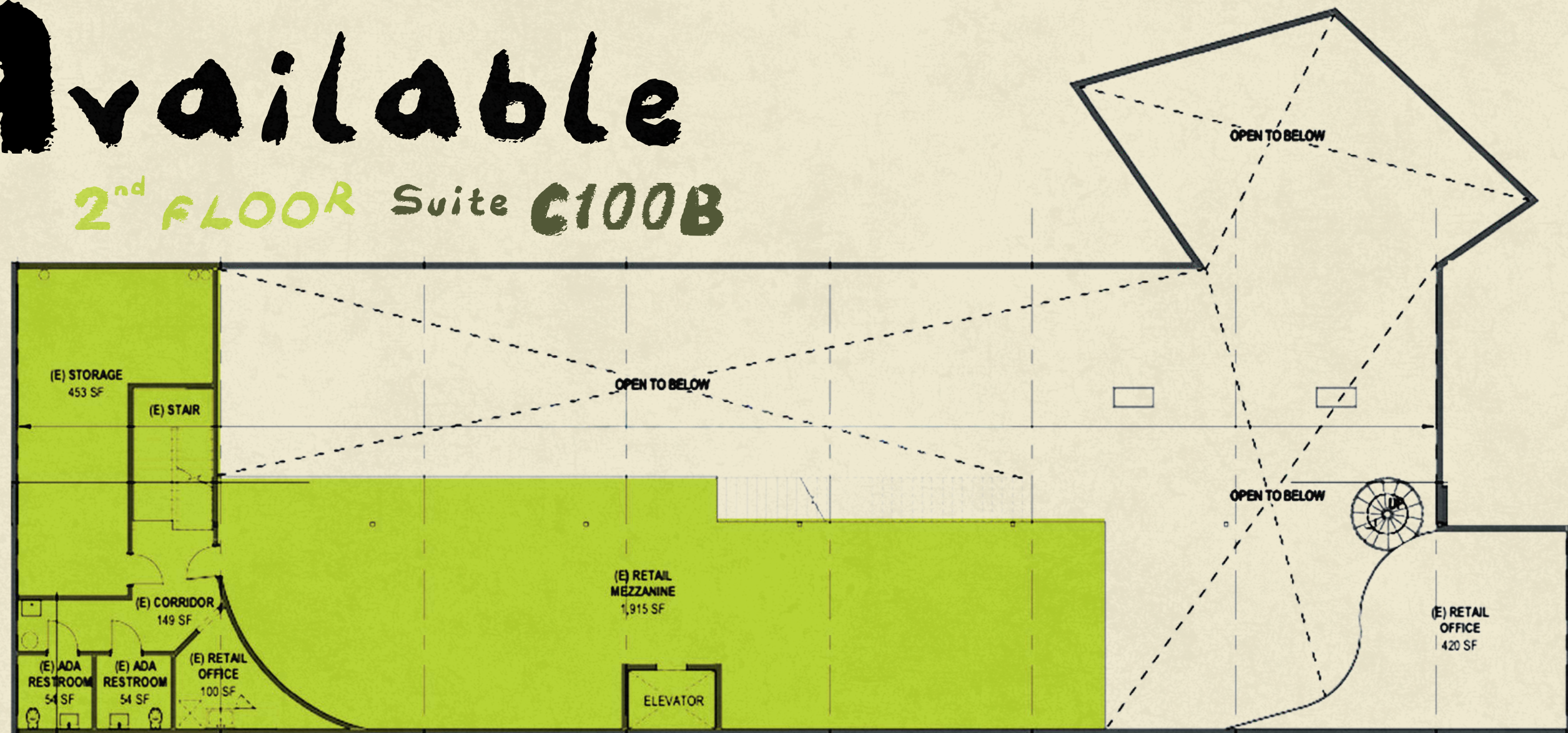
Photos - Suite C100A





# Available

2<sup>nd</sup> FLOOR Suite C100B



- 2765 SF

- Dedicated Restrooms

- Part of Space 6 on project map

- Elevator + Stair Access

- Overlooks common area





Photos - Suite C100B

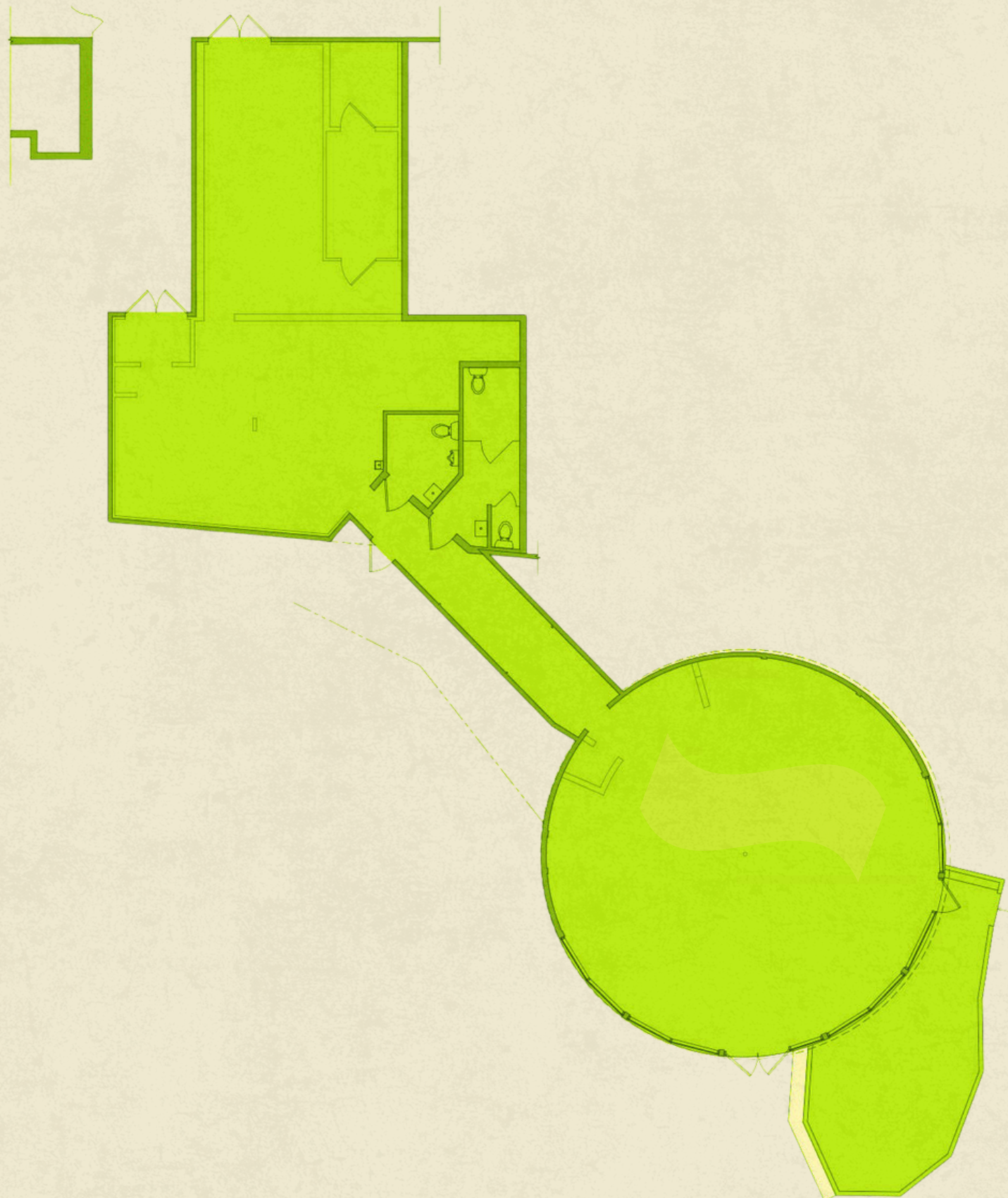




# Available

Restaurant Suite €100

- 3,060 sf
  - 1,413 sf – kitchen
  - 1,647 sf – dining
- dedicated restrooms
- Space 22 on project map







Photos - Suite €100

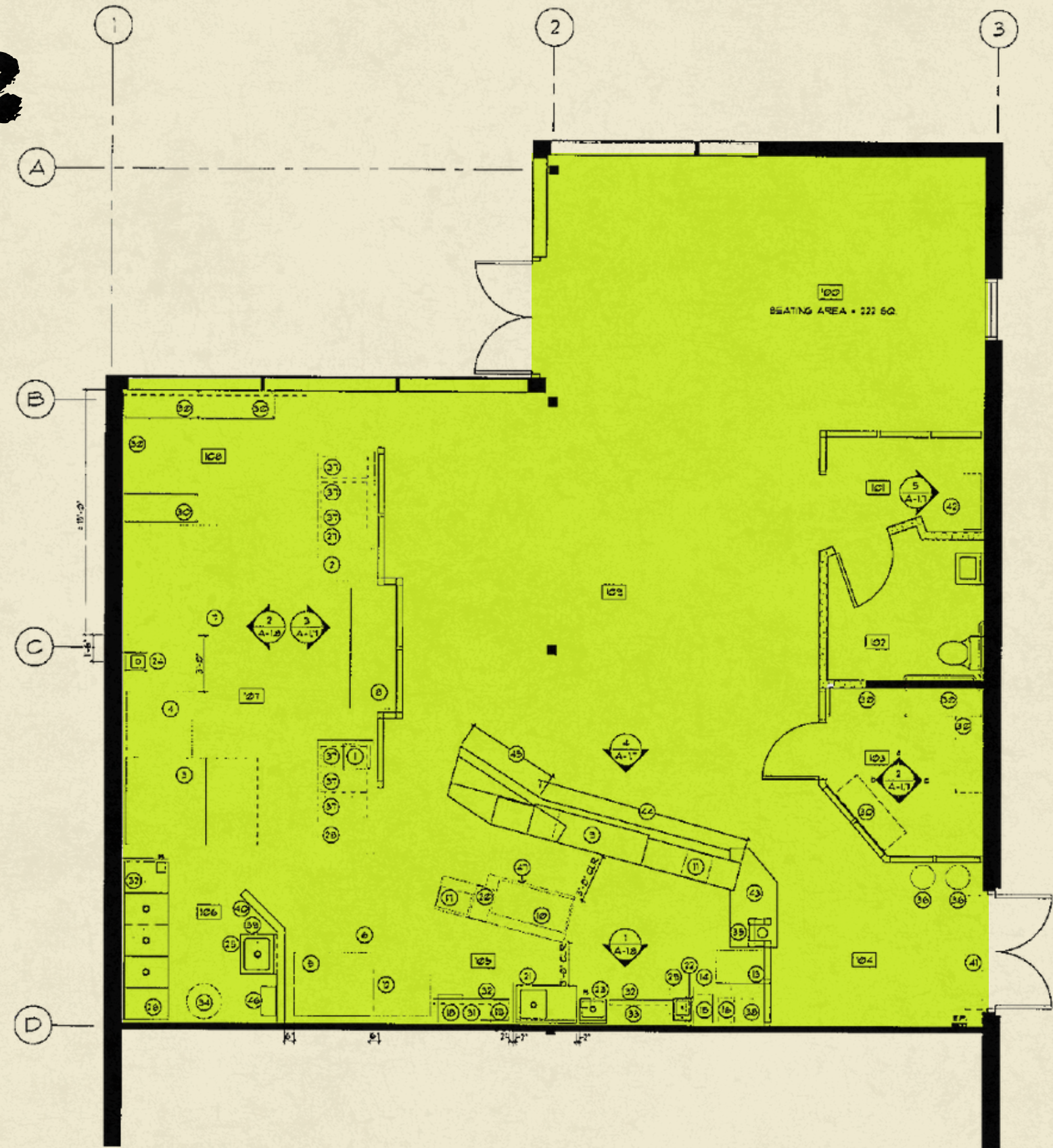




# Available

Bakery Suite D100

- 1,800 SF
- dedicated restrooms
- Space 12 on project map





Photos - Suite D100





THE LAB

THE CAMP

CAMPOUT

ANAHEIM PACKING HOUSE

**lab**  
labholdingllc

FARMERS PARK

MAKE BUILDING

PACKARD BUILDING

SOLO BUILDING

SOBECA DISTRICT

BIRDHOUSE

CASINO SAN CLEMENTE

SOUTH SIDE SOCIAL

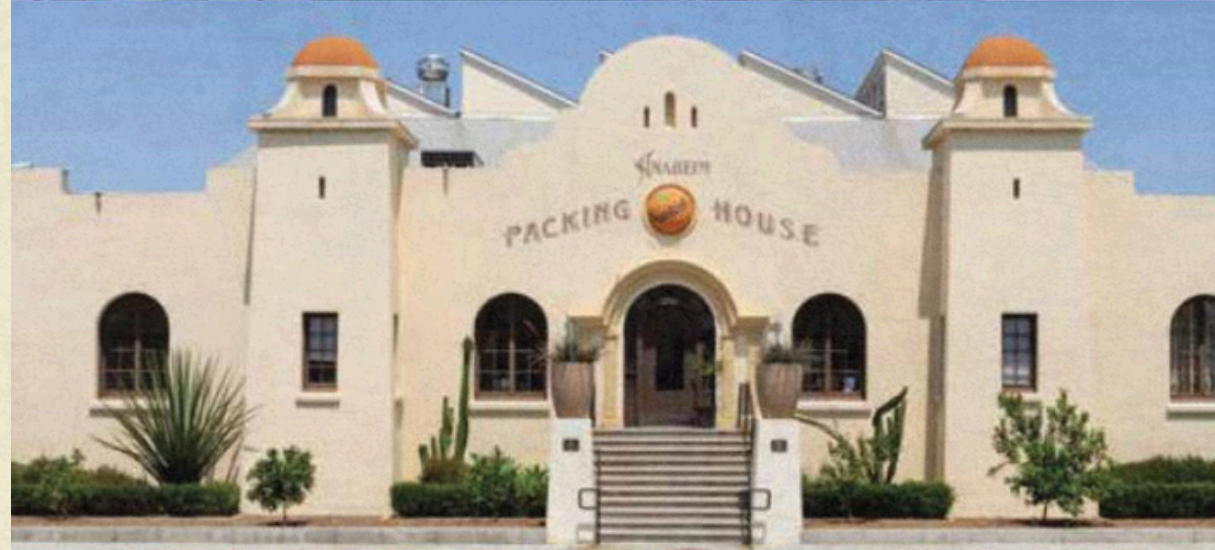
DNA

MARCOS

AND MORE

Over 30 years ago, LAB Holding began its journey to combat retail monotony. In the midst of Orange County's suburbia and perfectly planted palms, they envisioned a place of gathering for likeminded tribes, rooted in community and offering experiences not found in every mall on every corner.

The "LAB" stands for Little American Business, and each project champions localization, customization, and personalization while supporting independent voices. Guided by its mission, LAB Holding weaves community, culture, commerce, and consciousness into real estate innovation and place making.







leasing@labholding.com