



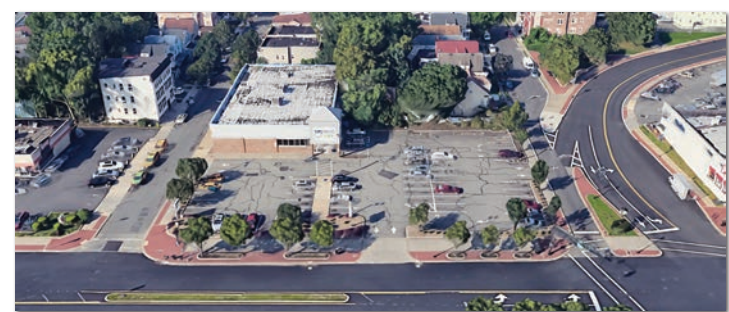
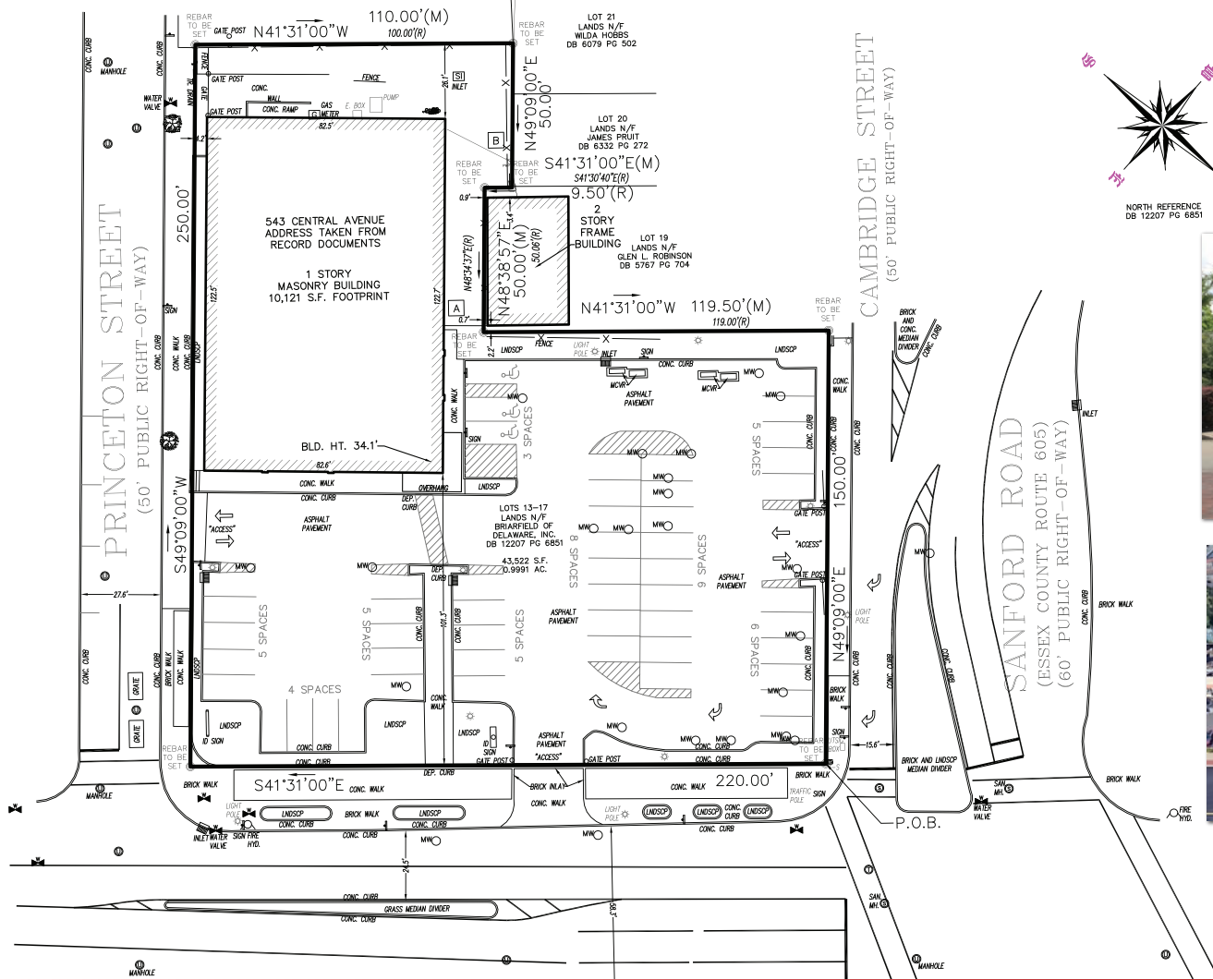
**543 CENTRAL AVE.**  
EAST ORANGE, NEW JERSEY

**10,121 SF FOR LEASE**

FORMER  **RITE AID**

**SHANE WIERKS**  
swierks@jefferyrealty.com  
C: 908.581.7781  
O: 908.668.9600 x209





# 543 CENTRAL AVE. EAST ORANGE, NJ

# SITE INFORMATION

**BUILDING SIZE:** 10,121 SF

**PARKING:** 52 SPACES

**NOTES:** • FORMER RITE AID

**AVAILABLE:** 2,500 - 10,121 SF

**TRAFFIC:** 8,749 VPD CENTRAL AVE.

• POTENTIAL TO DIVIDE INTO 2 OR 3

**RENT:** CALL FOR QUOTE

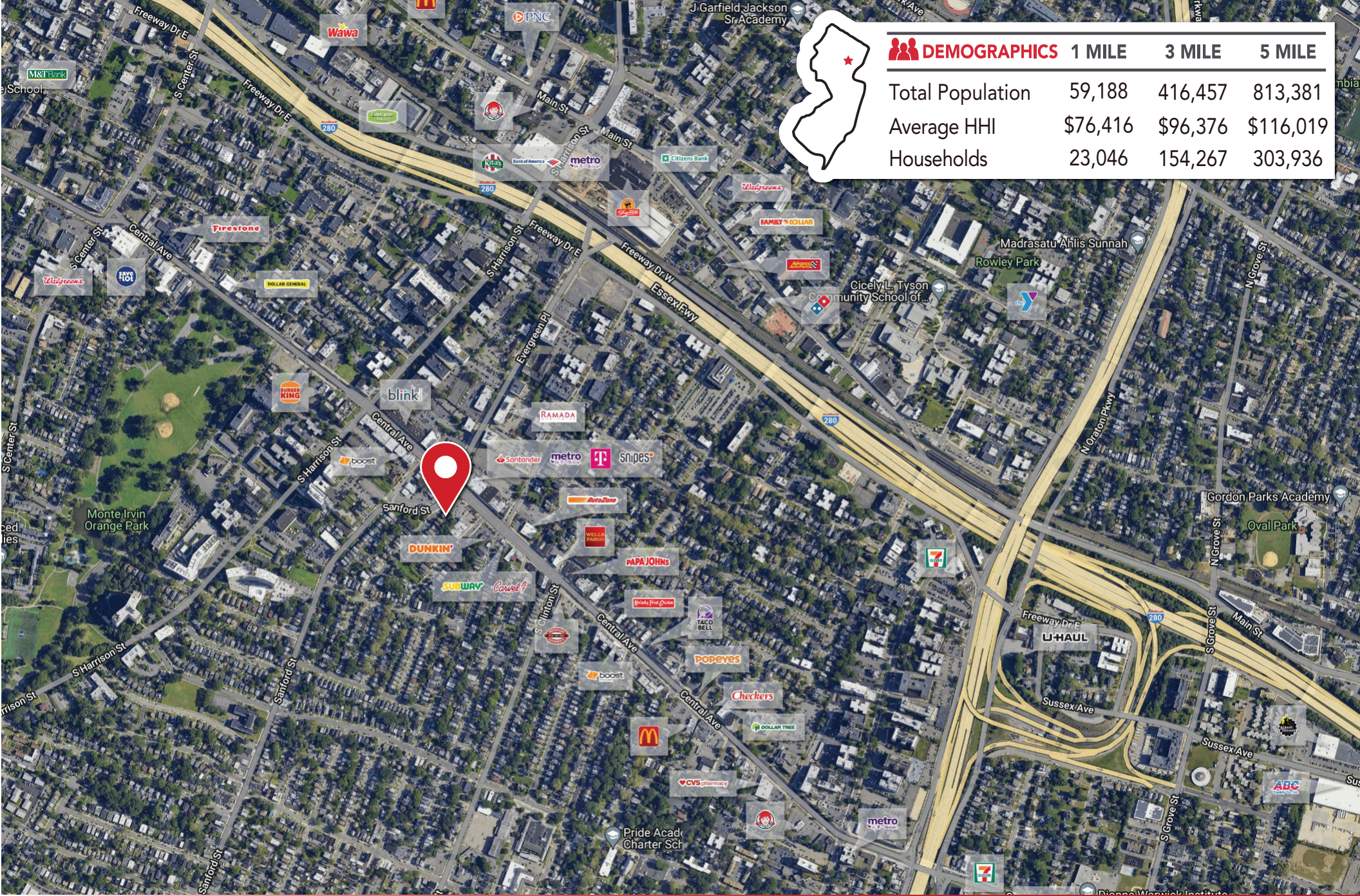
**FRONTAGE:** 225' ON CENTRAL AVE.

UNITS

**TAXES:** \$129,263.90 (2023)







**DEMOGRAPHICS**

	1 MILE	3 MILE	5 MILE
Total Population	59,188	416,457	813,381
Average HHI	\$76,416	\$96,376	\$116,019
Households	23,046	154,267	303,936

**543 CENTRAL AVE.** EAST ORANGE, NJ

**MARKET AERIAL**