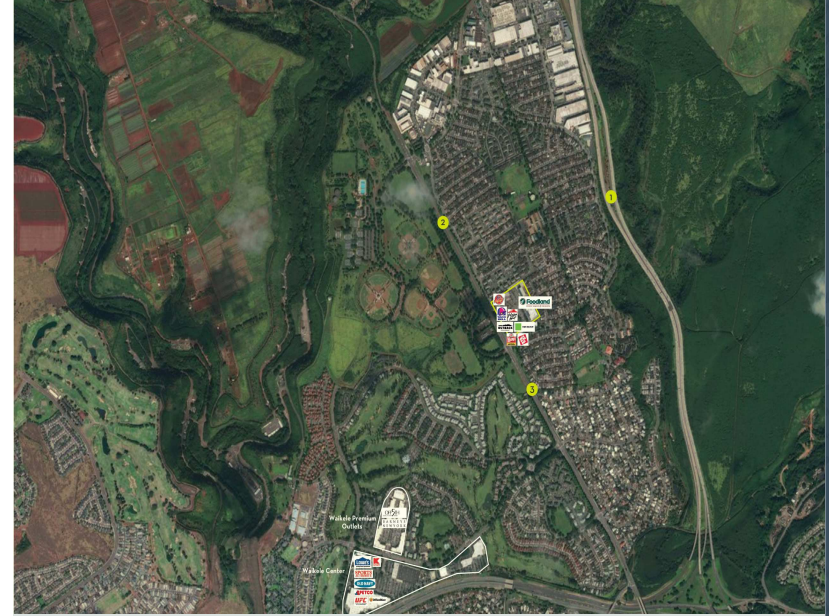


WAIPIO SHOPPING CENTER

94-1040 Waipio Uka Street, Waipahu, HI, 96797



PROPERTY

Neighborhood center anchored by Foodland Supermarket is located in the master-planned community of Waipio in Central Oahu. It is the sole grocery-anchored center in Waipio, and neighboring Waikele, Crestview and Mililani communities. The center is ideally situated across from the 270-acre Central Oahu Regional Park and is located less than two miles from Oahu's primary freeway arterials.

CENTER SIZE

113,800 SF

2017 DEMOGRAPHICS	1-Mile	3-Mile	5-Mile
Estimated Population	18,825	124,517	211,704
2021 Projected Population	18,825	124,517	211,704
Total Households	6,323	34,513	63,289
Average Household Income	\$96,754	\$99,195	\$100,400
Daytime Population	14,723	93,967	166,815
Median Age	39	39	38
Bachelor Degree or Higher	34%	25%	29%



ALEXANDER & BALDWIN

822 Bishop Street, Honolulu, HI 96813 | www.alexanderbaldwin.com

Leasing: **Aja M. S. Kusao (S)** (808) 525-6662 | akusao@abhi.com



WAIPIO SHOPPING CENTER

94-1040 Waipio Uka Street, Waipahu, HI, 96797



ALEXANDER & BALDWIN

822 Bishop Street, Honolulu, HI 96813 | www.alexanderbaldwin.com

Leasing: **Aja M. S. Kusao (S)** (808) 525-6662 | akusao@abhi.com



WAIPIO SHOPPING CENTER

94-1040 Waipio Uka Street, Waipahu, HI, 96797

AVAILABLE SPACES

SPACE	SF	SPACE	SF
7	1,390 SF	204	390 SF
104C	673 SF	301	5,000 SF

All information is subject to change without notice. Dimensions, configurations, and frontages are approximate and any measurements are estimates. No promise is made that the spaces, common areas, amenities, landscaping, or features depicted are or will be built, or if built will be as shown. Landlord makes no representations about specific tenants or where they may operate. Unless Landlord signs a binding lease for a specific space, you do not have a right to lease any space. No content from these pages may be copied, republished, or distributed in any way without Landlord's written consent. Despite Landlord's efforts to provide accurate information, it is not possible to ensure it is always up to date, and Landlord assumes no responsibility for any actions taken in reliance on this information.

