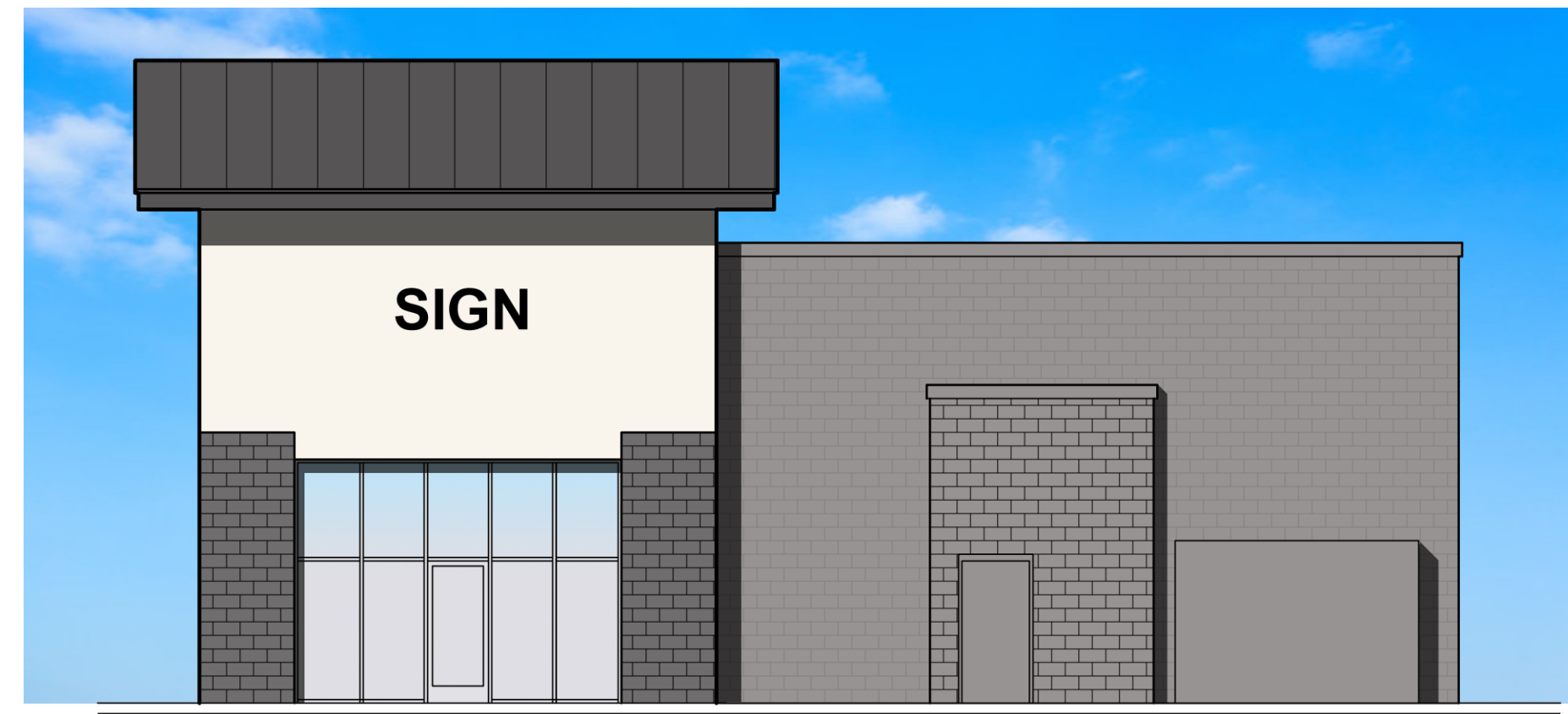




EAST ELEVATION

SCALE: 1/2" = 1'-0"



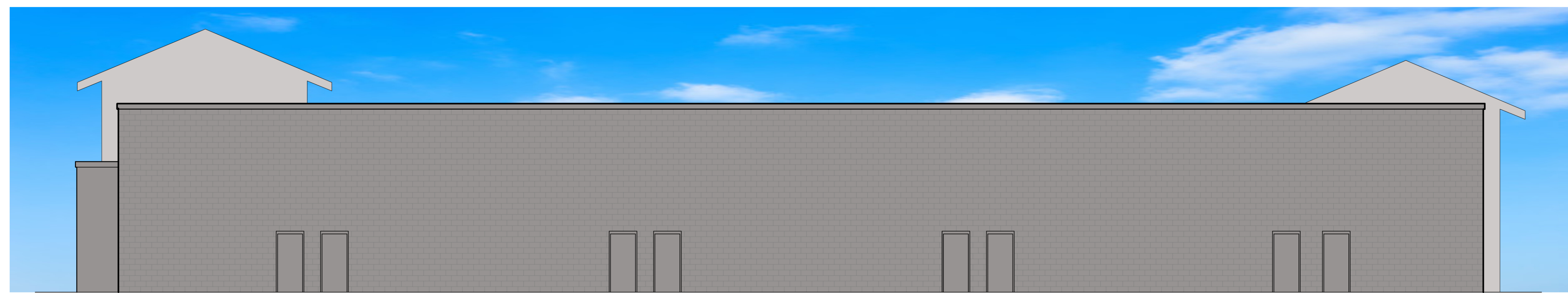
NORTH ELEVATION

SCALE: 1/8" = 1'-0"



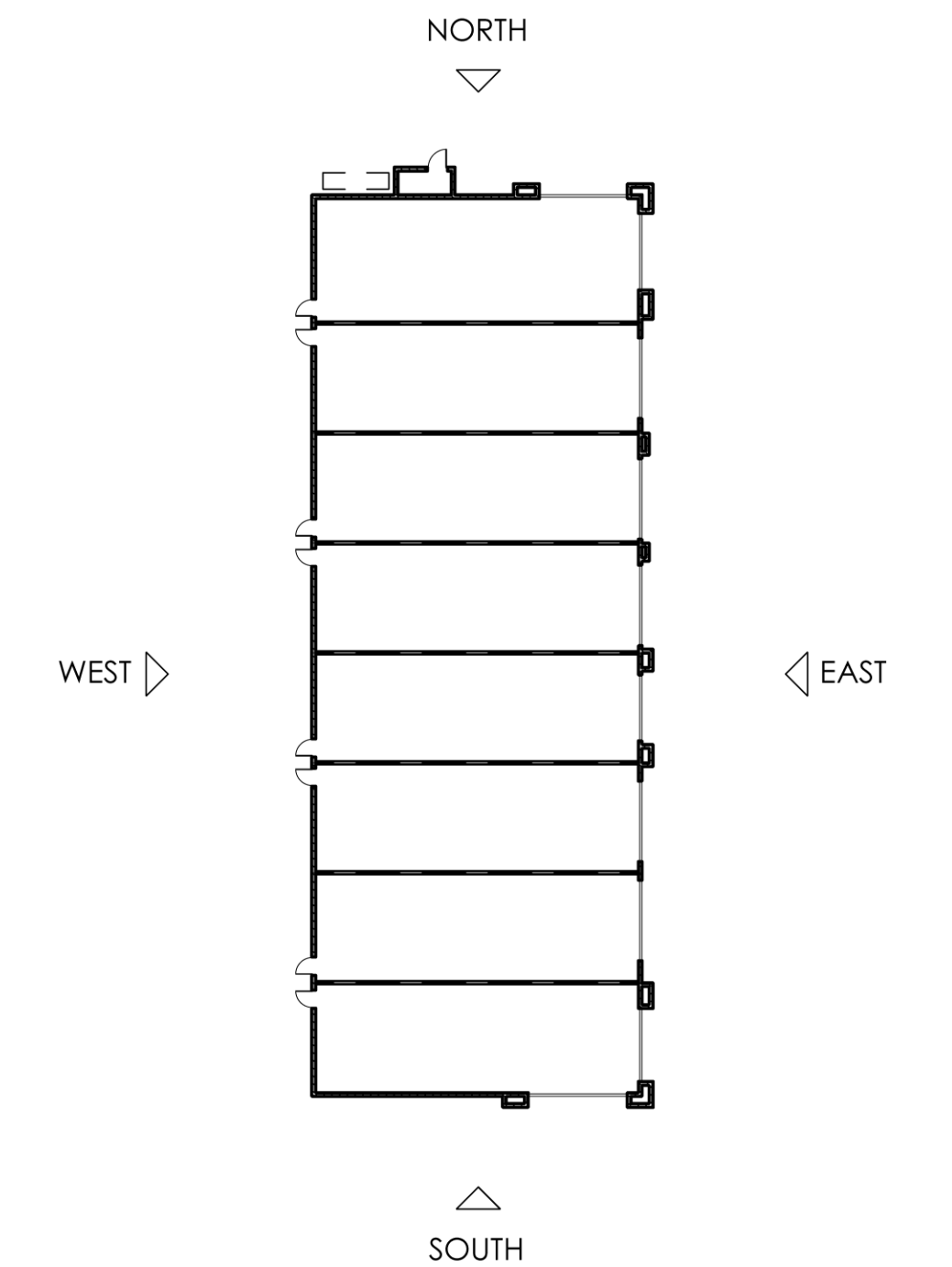
SOUTH ELEVATION

SCALE: 1/8" = 1'-0"



NORTH ELEVATION

SCALE: 1/8" = 1'-0"



KEY PLAN

SCALE: NTS

NEW COMMERCIAL DEVELOPMENT

NWC SUN VALLEY PARKWAY AND ROOSEVELT STREET

BUCKEYE, AZ

DATE:05-11-2020 (PRELIMINARY)

EL-1

Mesquite Architecture LLC

#2002.00