

The Shops on Elm Place

581 – 607 Elm Place, Highland Park, IL 60035

± 1,660 SF / 2,406 SF Office Space For Lease



Located in the heart of vibrant downtown Highland Park. This premier mixed-use property offers an unparalleled location for professionals seeking a dynamic and convenient workspace.

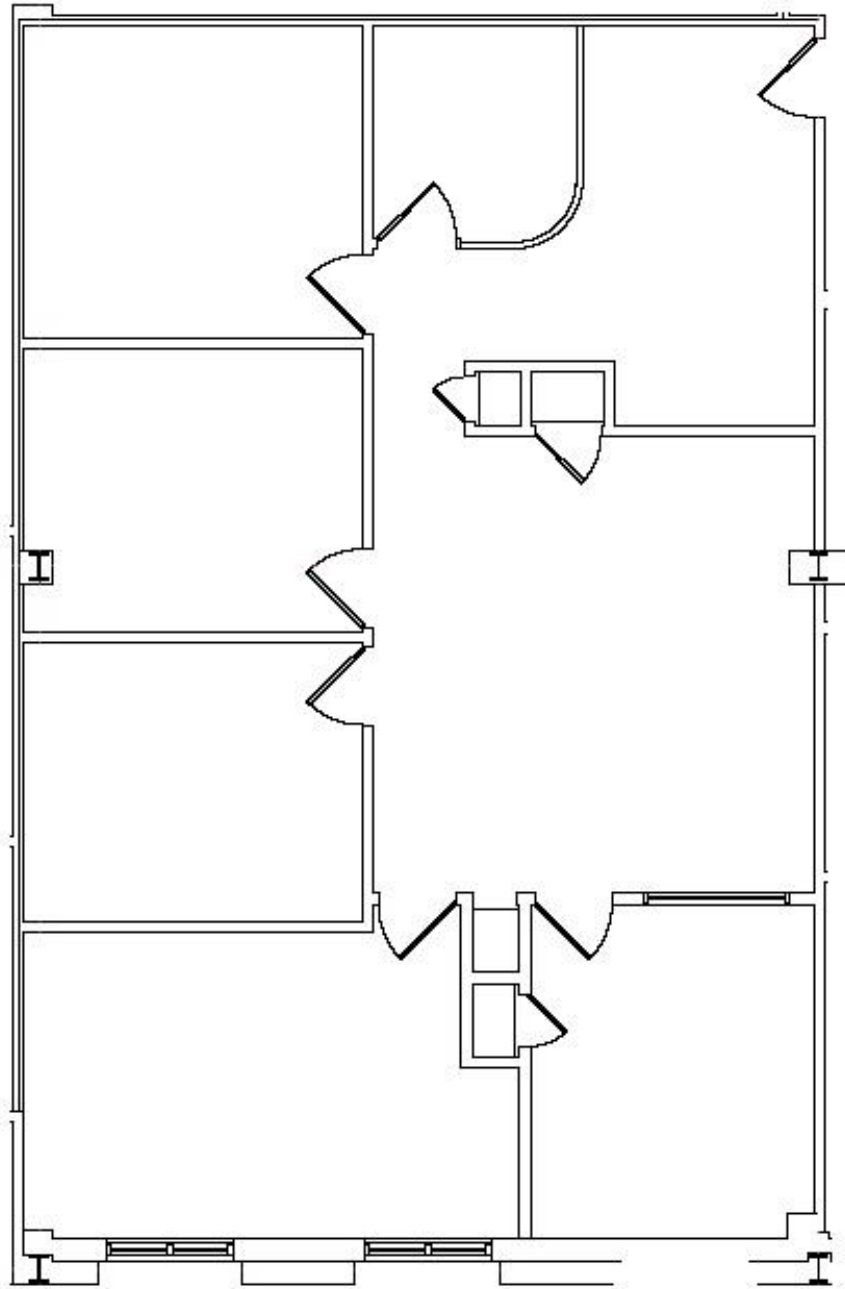
Prime Location: Steps away from an array of charming shops, restaurants, and businesses. This vibrant community attracts clients and employees alike, fostering a lively atmosphere for networking and growth.

Unmatched Accessibility: The Shops on Elm Place is within walking distance of the Highland Park Metra station, providing seamless access to Chicago and surrounding areas. Whether commuting by train or car, your team and clients will appreciate the convenience.

Lease Rate: \$20 NNN

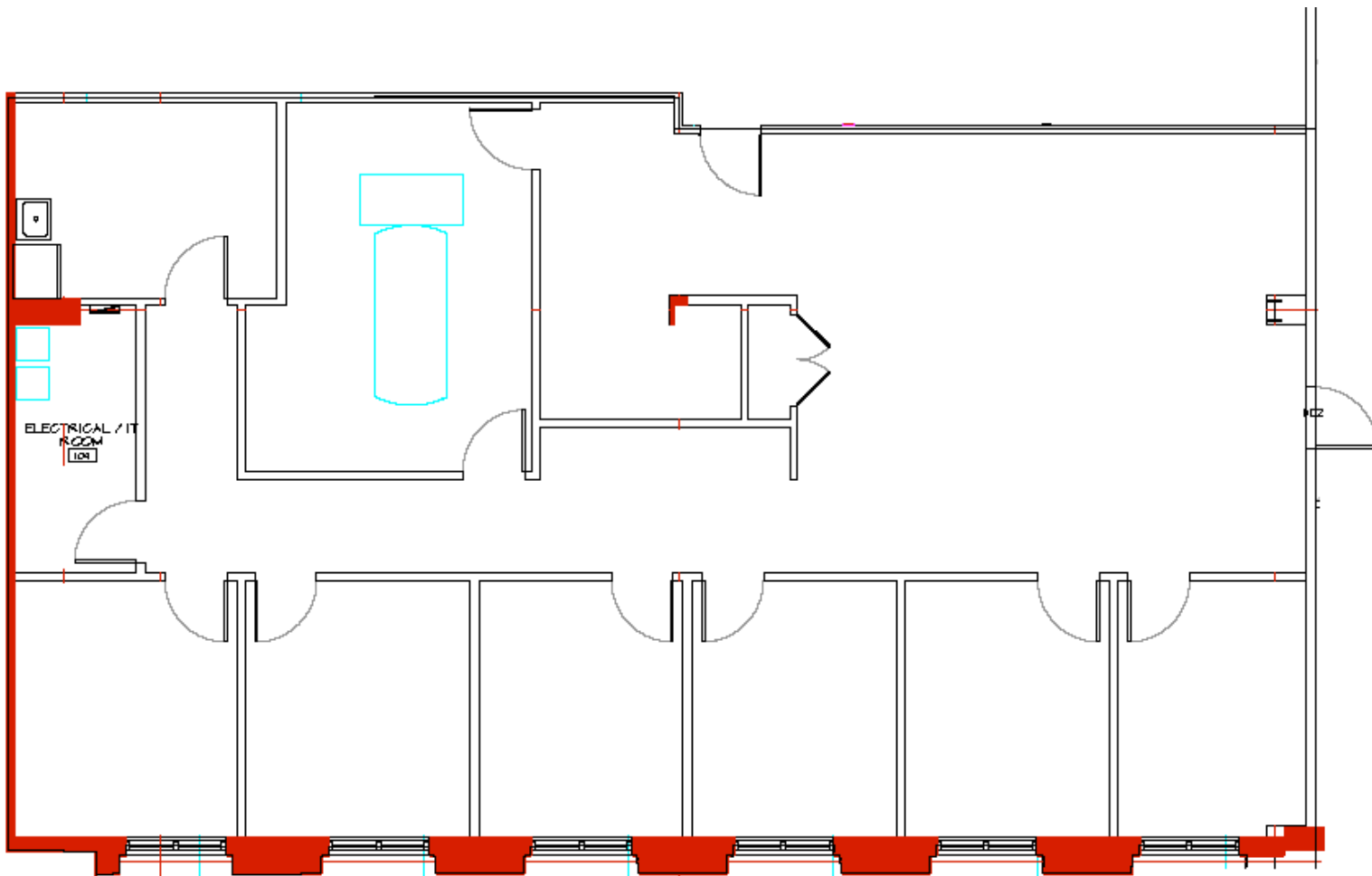
FLOOR PLAN

Suite 201 – 1,660 SF



FLOOR PLAN

Suite 218 – 2,406 SF



The Shops on Elm Place

581 – 607 Elm Place, Highland Park, IL 60035



The information contained in the memorandum has been obtained from sources we believe to be reliable; however, Resource Commercial Advisors, or any of their officers, employees, or agents, has not verified, and will not verify any of the information contained herein and makes no warranty or representation whatsoever regarding the accuracy or completeness of the information provided. This memorandum does not purport to be all-inclusive or to contain all the information which prospective lessee or purchaser may desire. References to square footage or age are approximate. No legal liability is assumed or shall be implied with respect thereto. The owner expressly reserves the right at its sole discretion to reject any or all proposals or expressions of interest in the property and to terminate discussions with any party at any time with or without notice.

Agency Disclosure

Trip McDonough ("Licensee") and Mark Brodson ("Licensee") of Resource Commercial Advisors are acting solely on behalf of the Owner or Lessor of the real estate and any information given to the Licensees by the Purchaser/Lessee may be disclosed to the Owner/Lessor.