


WELLEON

Cleveland's Newest Mixed-Use Development



[View Property Video](#) 

Retail for Lease
5454 Detroit Avenue, Cleveland, Ohio 44102

5,139 SF



Photo Credit: Sonny Lindsey

WELLEON

Join the first floor of Cleveland's newest mixed-use development, Welleon. Prominently located along Detroit Avenue in the Gordon Square neighborhood on Cleveland's near west side, the project includes 127 upscale market-rate apartments, first-class amenities including a wellness center, private pool, state-of-the-art building systems, and more. The commercial space features massive glass lines, 16' ceilings and access to outdoor seating/amenity space.

AVAILABLE SPACE

Suite 101 5,139 SF Restaurant Space (Can be Divided)
Premier restaurant space with large window line, frontage on Detroit, and ample patio space

NEARBY NEIGHBORS



IL RIONE PIZZERIA



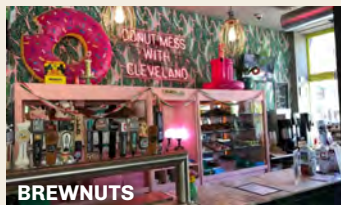
HAPPY DOG



CLEVELAND BAGEL



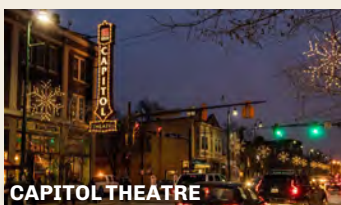
GORDON GREEN



BREWNUTS



ASTORIA



CAPITOL THEATRE



ALL SAINTS



SUPERELECTRIC PINBALL

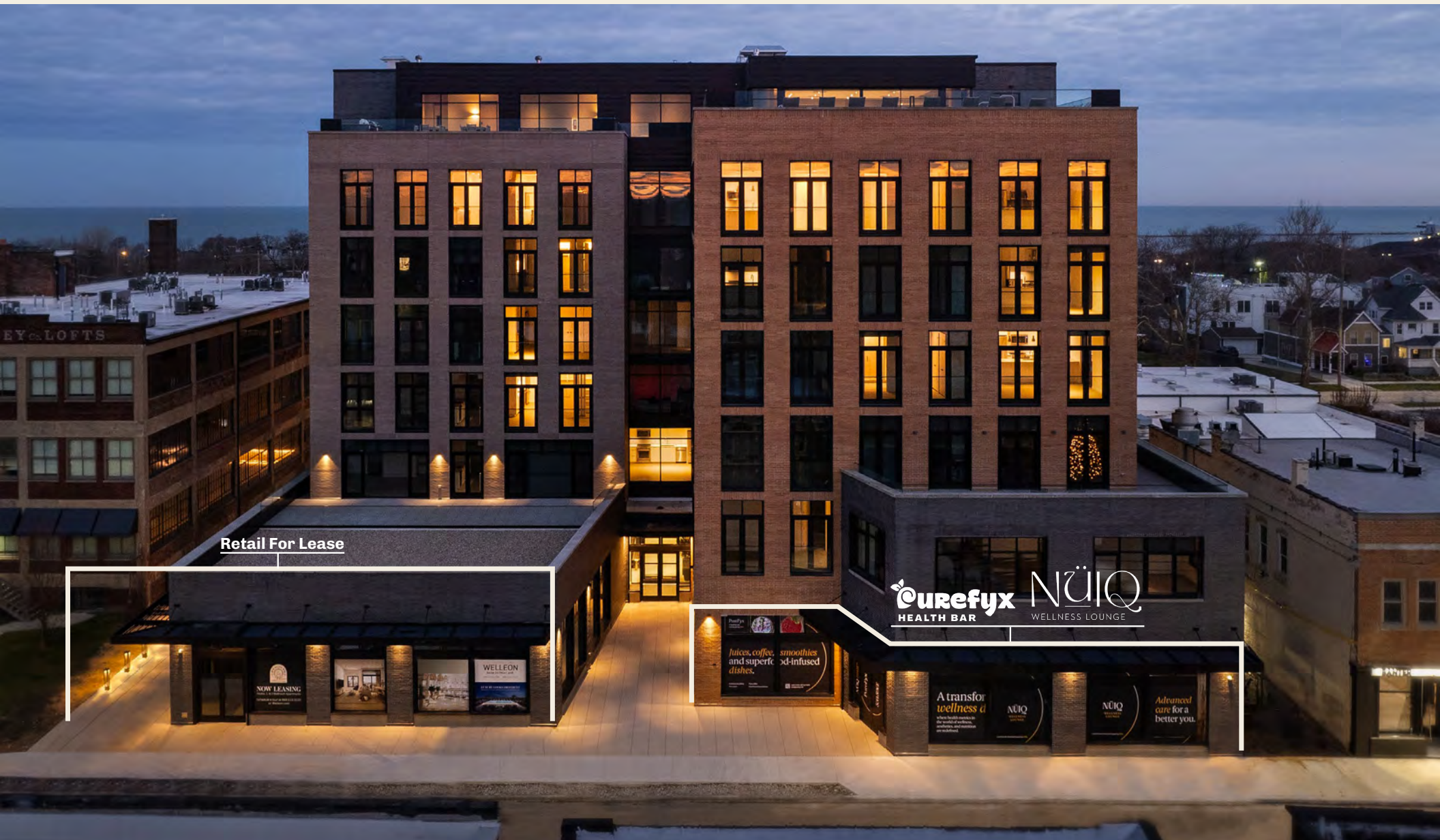
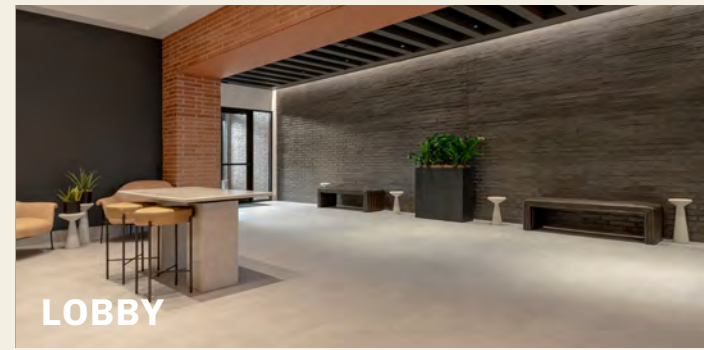
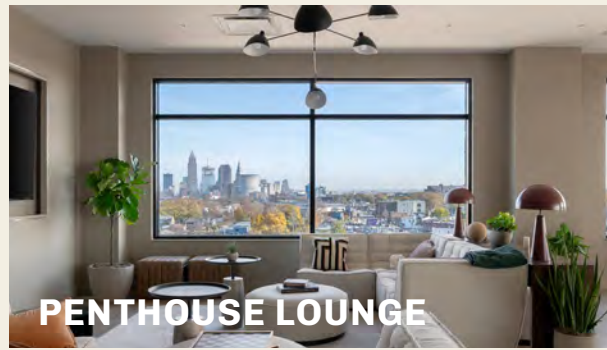
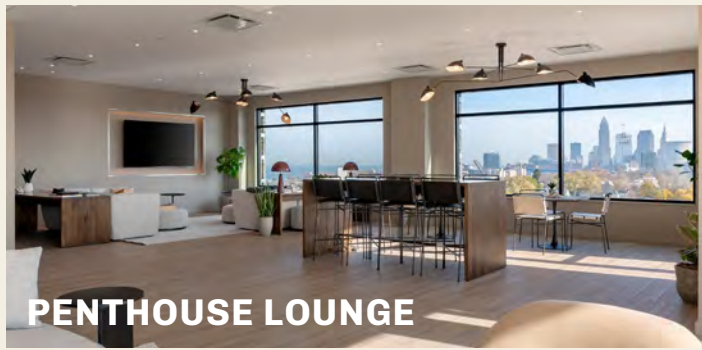
BICYCLE STORAGE

Gordon Square is best experienced by foot or on a bike. Welleon provides secure, private, bicycle parking.



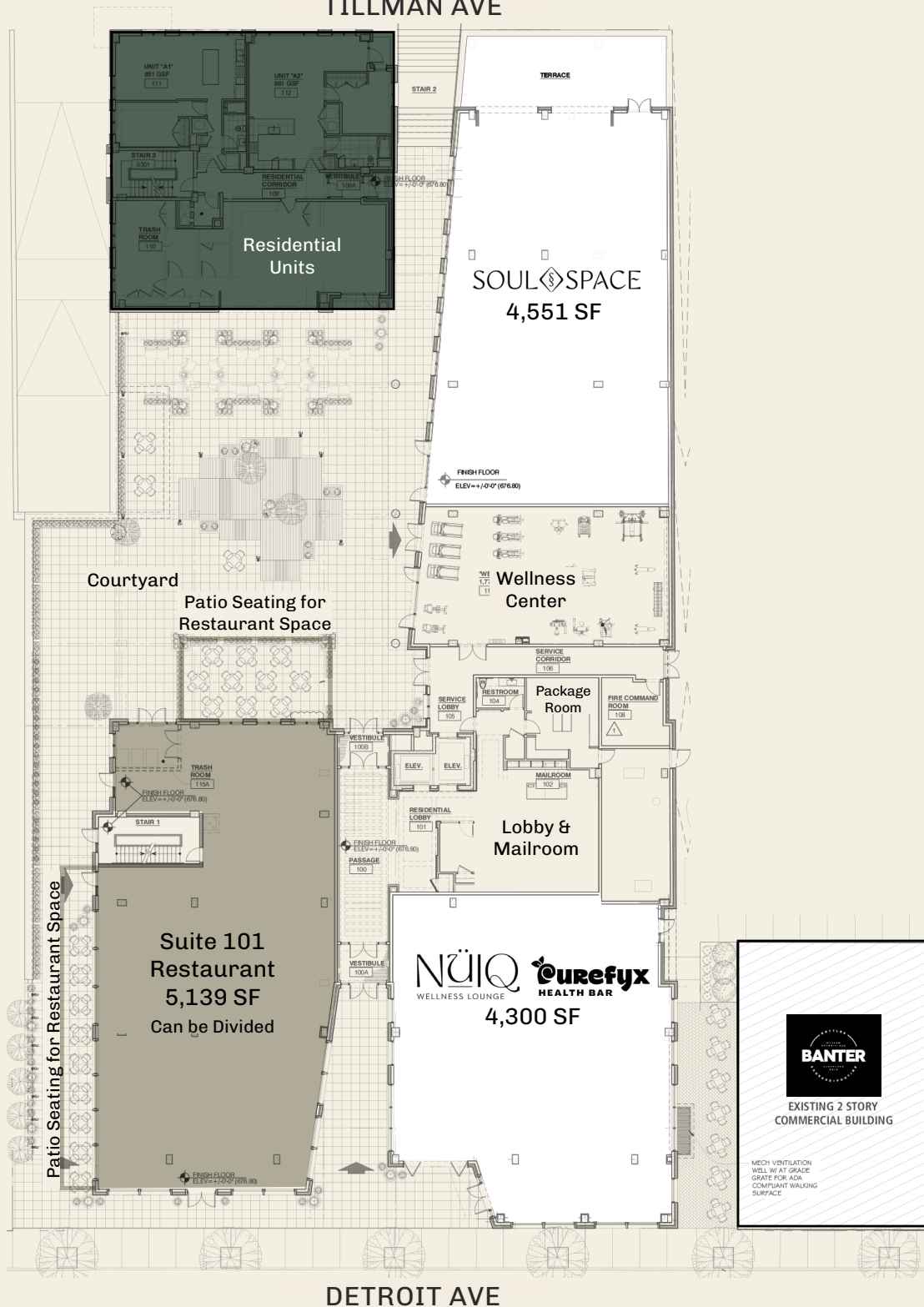
CONVENIENT PARKING

Gordon Square provides ample surface parking throughout the neighborhood. There are hundreds of free street parking spaces within a 3-block radius, including spots directly in front of the retail space on Detroit Avenue.



SITE PLAN

TILLMAN AVE



DETROIT AVE

	Available Space
	Existing Retail
	Residential Units



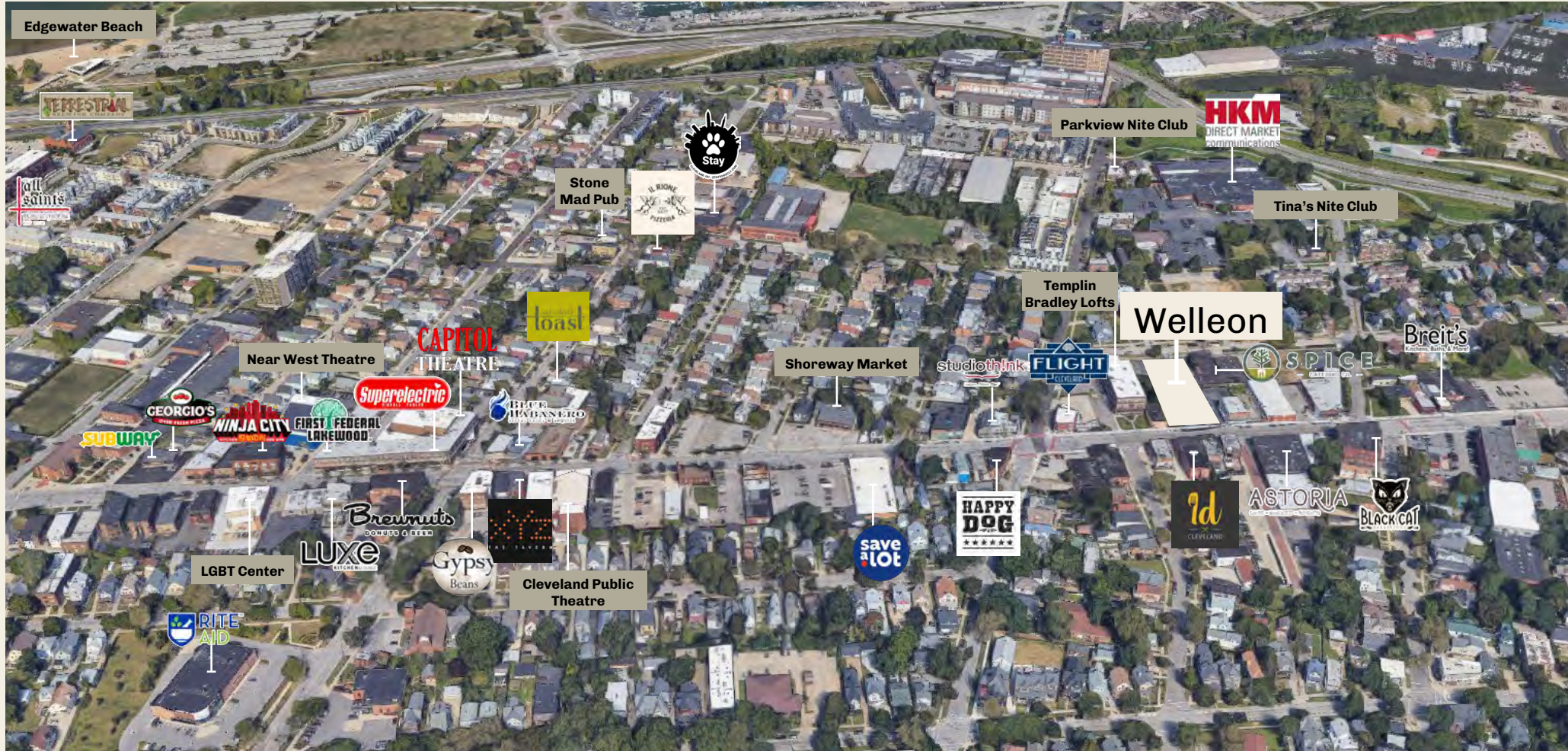
VACANT RESTAURANT SPACE



FUTURE COURTYARD PATIO SPACE



VACANT RESTAURANT SPACE



Edgewater Beach

TERRESTRIAL

all saints



Stone Mad Pub



Parkview Nite Club

HKM DIRECT MARKET communications

Tina's Nite Club

toast

Templin Bradley Lofts

Welleon

Breit's

Near West Theatre

CAPITOL THEATRE

Shoreway Market

studiothink

FLIGHT CLEVELAND

SPICE

SUBWAY

GEORGIO'S

NINJA CITY

FIRST FEDERAL LAKEWOOD

Superelectric

BREIT'S BAKERY

WELLEON

Brewnuts

CLAYTON

LGBT Center

LUXE

Gypsy Beans

Cleveland Public Theatre

save a lot

HAPPY DOG

id CLEVELAND

ASTORIA

BLACK CAT

RITE AID



PROMINENTLY LOCATED IN GORDON SQUARE

Steps to Ohio City and 2 miles to Downtown Cleveland



WELLEON

Retail for Lease

5454 Detroit Avenue, Cleveland, Ohio 44102



Photo Credit: Sonny Lindsey

DAVID LEB
Vice President
+1 216 525 1488
dleb@crescorealestate.com

ALEX SMITH
Senior Associate
+1 216 525 1490
asmith@crescorealestate.com

AUSTIN LOVE
Associate
+1 216 525 1395
alove@crescorealestate.com

CUSHMAN & WAKEFIELD | CRESCO
6100 Rockside Woods Blvd, Suite 200
Cleveland, Ohio 44131
crescorealestate.com

©2024 Cushman & Wakefield. All rights reserved. The information contained in this communication is strictly confidential. This information has been obtained from sources believed to be reliable but has not been verified. NO WARRANTY OR REPRESENTATION, EXPRESS OR IMPLIED, IS MADE AS TO THE CONDITION OF THE PROPERTY (OR PROPERTIES) REFERENCED HEREIN OR AS TO THE ACCURACY OR COMPLETENESS OF THE INFORMATION CONTAINED HEREIN, AND SAME IS SUBMITTED SUBJECT TO ERRORS, OMISSIONS, CHANGE OF PRICE, RENTAL OR OTHER CONDITIONS, WITHDRAWAL WITHOUT NOTICE, AND TO ANY SPECIAL LISTING CONDITIONS IMPOSED BY THE PROPERTY OWNER(S). ANY PROJECTIONS, OPINIONS OR ESTIMATES ARE SUBJECT TO UNCERTAINTY AND DO NOT SIGNIFY CURRENT OR FUTURE PROPERTY PERFORMANCE.