



COMMERCIAL  
REAL ESTATE

*the sign of a profitable property*



# FOOD HALL SPACE AVAILABLE IN NEWER OLD TOWN CAMARILLO DEVELOPMENT

2024 Ventura Blvd., #114A, Camarillo, CA 93010



**AUSTIN HARRELL**  
(818) 514-0547 | [austin@illicre.com](mailto:austin@illicre.com)  
DRE#02051633

**GREG OFFSAY, CCIM**  
(818) 697-9387 | [greg@illicre.com](mailto:greg@illicre.com)  
DRE#01837719



5945 CANOGA AVENUE, WOODLAND HILLS, CA 91367 - 818.501.2212/PHONE - [www.illicre.com](http://www.illicre.com) - DRE #01834124

RESTAURANT SPACE  
CAMARILLO, CA



**EXCLUSIVELY LISTED BY**

**AUSTIN HARRELL**

SENIOR ASSOCIATE

(818) 514-0547 | [austin@illicre.com](mailto:austin@illicre.com)

DRE#02051633

**GREG OFFSAY, CCIM**

EXECUTIVE VICE PRESIDENT

(818) 697-9387 | [greg@illicre.com](mailto:greg@illicre.com)

DRE#01837719

This information has been secured from sources we believe to be reliable, but we make no representations or warranties, expressed or implied, as to the accuracy of the information. References to square foot-age are approximate. References to neighboring retailers are subject to change, and may not be adjacent to the vacancy being marketed either prior to, during, or after leases are signed. Lessee must verify the information and bears all risk for any inaccuracies.

5945 CANOGA AVENUE, WOODLAND HILLS, CA 91367 - 818.501.2212/PHONE - [www.illicre.com](http://www.illicre.com) - DRE #01834124

# PROPERTY FEATURES

2024 Ventura Blvd., #114A, Camarillo, CA 93010







## APPROX. 350-550 SF

RESTAURANT SPACE AVAILABLE

- ✓ Cold kitchen space in a vibrant food hall: "The Mark"
- ✓ Shared indoor and outdoor seating areas
- ✓ Neighbors include Topa Topa Brewing, Café Ficelle & Shooby's
- ✓ Newly built mixed-use property with 23 residential units
- ✓ Striking architecture in this 3-story development
- ✓ Do not disturb current tenants on-site
- ✓ All seating and bathrooms are shared "in common" with the other tenants (not included in SF)
- ✓ Kitchen space/premises is ±350 SF with the ability to expand to a total of ±550 SF

## AREA AMENITIES

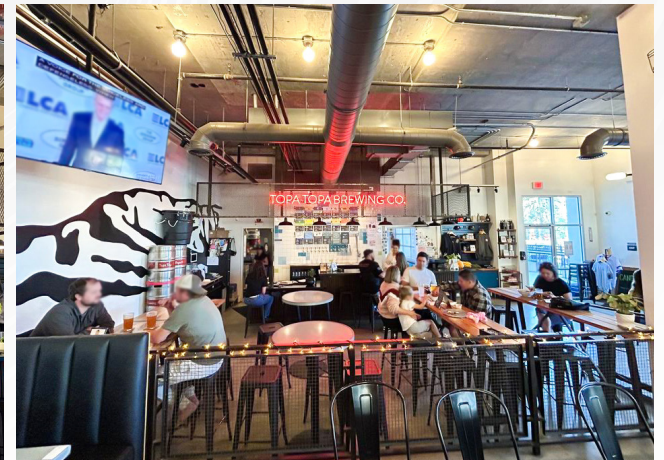
- ✓ Situated in charming "Old Town Camarillo"
- ✓ Prime spot for shoppers and pedestrians on Ventura Blvd
- ✓ Highly visible from the 101 Freeway
- ✓ Under a mile to Camarillo Premium Outlets
- ✓ One mile to Palace 12 & IMAX Theatre
- ✓ Between Bandits Grill & Bar and Twenty 88
- ✓ Two blocks from the Camarillo Farmers Market

— DEMOGRAPHICS	1 MILE	3 MILE	5 MILE
 Population	14,067	63,045	84,384
 Avg. HH Income	\$110,691	\$129,923	\$134,359
 Daytime Pop	12,859	57,661	77,357
 Traffic Count	± 18,066 CPD ON VENTURA BLVD & CEDAR DR		

RESTAURANT SPACE  
CAMARILLO, CA

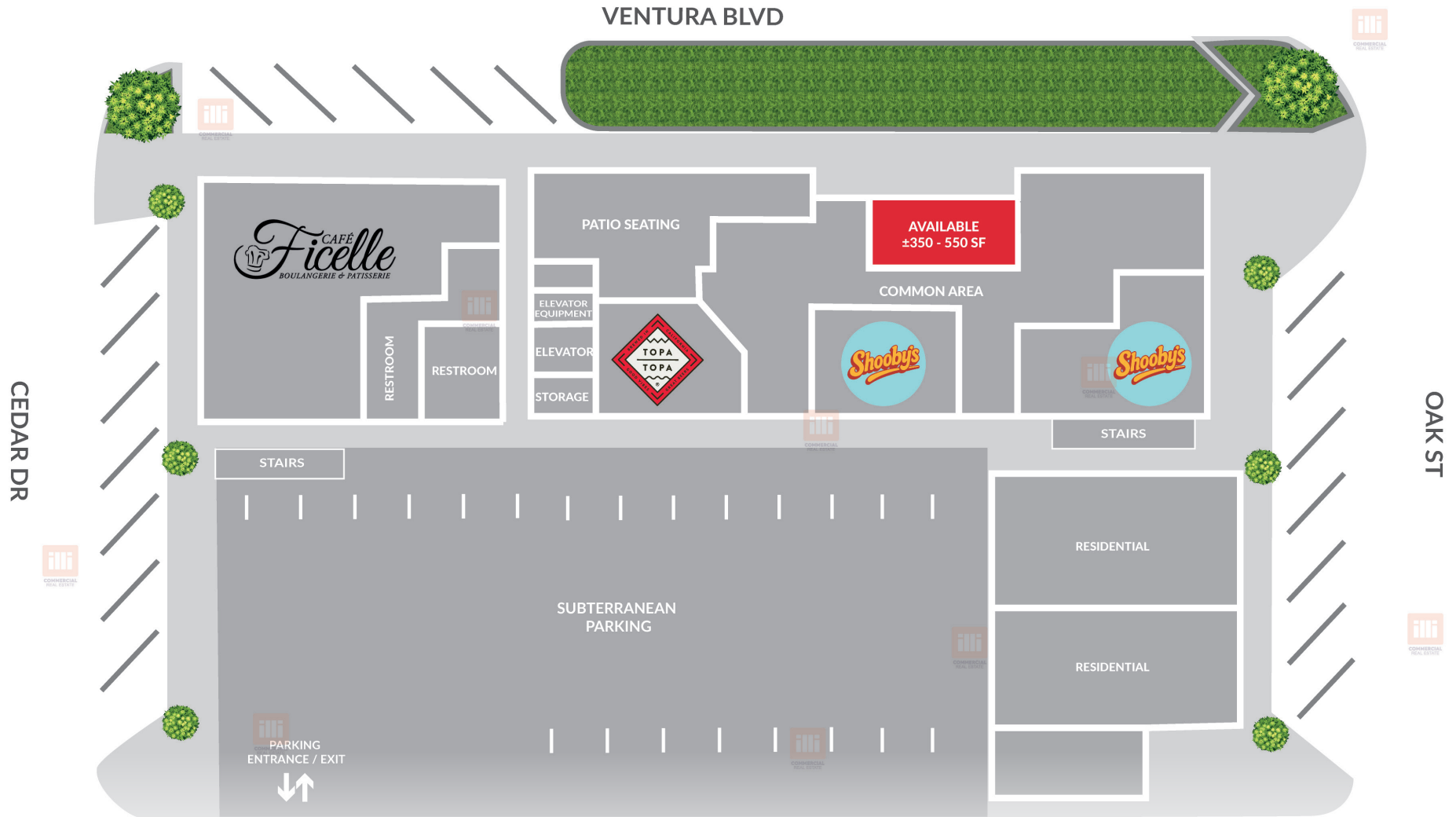
# INTERIOR PHOTOS

2024 Ventura Blvd., #114A, Camarillo, CA 93010



# SITE PLAN

2024 Ventura Blvd., #114A, Camarillo, CA 93010



Measurements are approximate only, and Broker does not guarantee their accuracy. Tenants are subject to change, and Broker makes no representation written or implied that the feature tenants will be occupying the space throughout the duration of the Lessee's tenancy. Lessee is to conduct their own due diligence before signing any formal agreements.



**AIRPORT**  
Camarillo  
flight instruction

**CAMARILLO PREMIUM OUTLETS**  
A SIMON CENTER

**AVAILABLE**



**AERIAL MAP**



**COMMERCIAL**  
REAL ESTATE

**AUSTIN HARRELL**

SENIOR ASSOCIATE

(818) 514-0547 | [austin@illicre.com](mailto:austin@illicre.com)

DRE#02051633

**GREG OFFSAY, CCIM**

EXECUTIVE VICE PRESIDENT

(818) 697-9387 | [greg@illicre.com](mailto:greg@illicre.com)

DRE#01837719



5945 CANOGA AVENUE | WOODLAND HILLS, CA 91367 | 818.501.2212/PHONE | [www.illicre.com](http://www.illicre.com) | DRE #01834124

This information has been secured from sources we believe to be reliable, but we make no representations or warranties, expressed or implied, as to the accuracy of the information. References to square foot-age are approximate. References to neighboring retailers are subject to change, and may not be adjacent to the vacancy being marketed either prior to, during, or after leases are signed. Lessee must verify the information and bears all risk for any inaccuracies.