

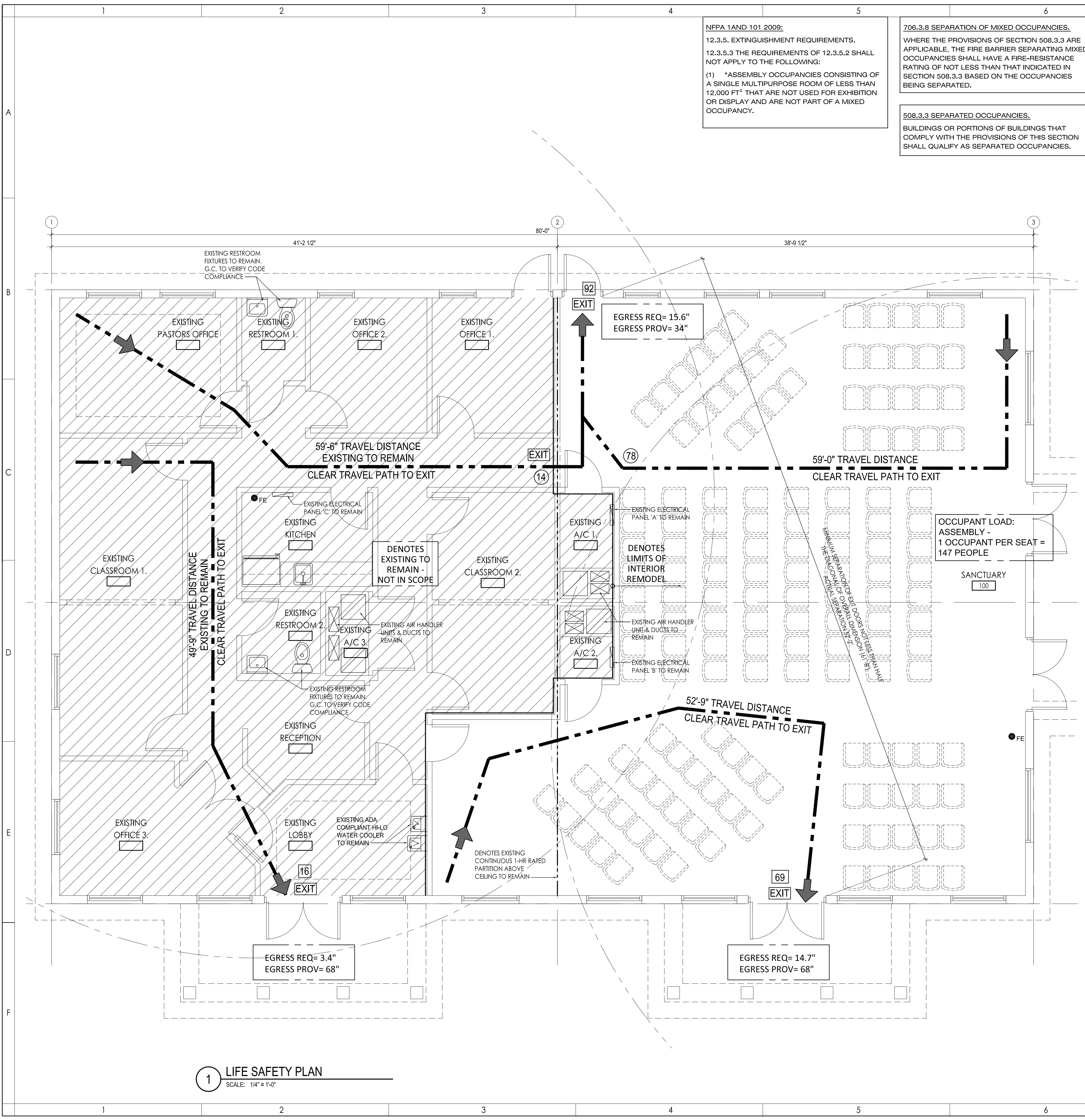
**1** DEMOLITION PLAN  
SCALE: 1/4" = 1'-0"

**NFPA 1 AND 101 2009:**  
 12.3.5. EXTINGUISHMENT REQUIREMENTS.  
 12.3.5.3 THE REQUIREMENTS OF 12.3.5.2 SHALL NOT APPLY TO THE FOLLOWING:  
 (1) \*ASSEMBLY OCCUPANCIES CONSISTING OF A SINGLE MULTIPURPOSE ROOM OF LESS THAN 12,000 FT<sup>2</sup> THAT ARE NOT USED FOR EXHIBITION OR DISPLAY AND ARE NOT PART OF A MIXED OCCUPANCY.

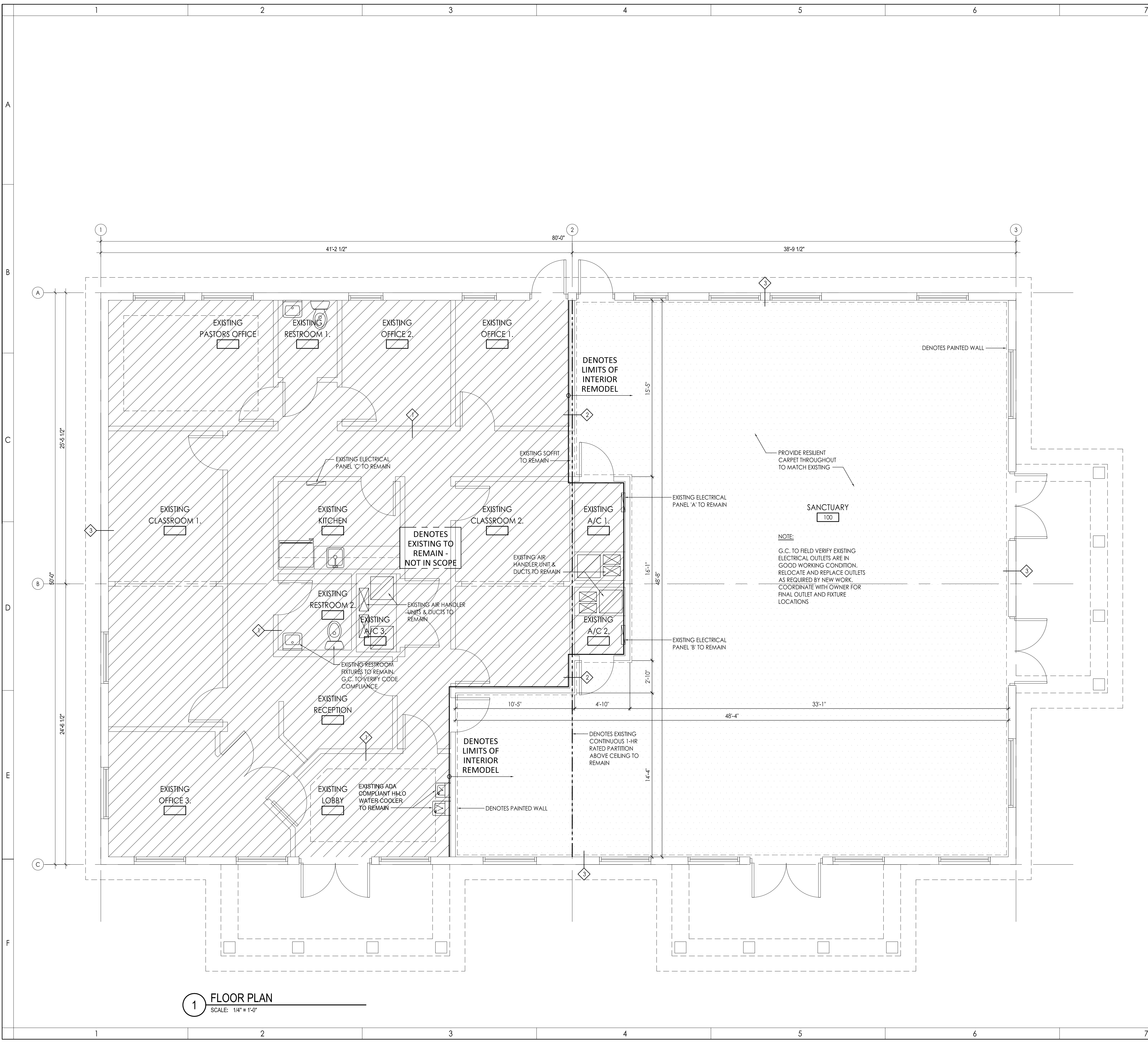
**706.3.8 SEPARATION OF MIXED OCCUPANCIES.**  
 WHERE THE PROVISIONS OF SECTION 508.3.3 ARE APPLICABLE, THE FIRE BARRIER SEPARATING MIXED OCCUPANCIES SHALL HAVE A FIRE-RESISTANCE RATING OF NOT LESS THAN THAT INDICATED IN SECTION 508.3.3 BASED ON THE OCCUPANCIES BEING SEPARATED.

**508.3.3 SEPARATED OCCUPANCIES.**  
 BUILDINGS OR PORTIONS OF BUILDINGS THAT COMPLY WITH THE PROVISIONS OF THIS SECTION SHALL QUALIFY AS SEPARATED OCCUPANCIES.

OCCUPANT COUNT	
ESTIMATED ASSEMBLY OCCUPANT COUNT BASED ON PASCO COUNTY MASTER PLANNED UNIT DEVELOPMENT (MPUD) ZONING CLASSIFICATION:	TOTAL OCCUPANT COUNT: 177
DOOR EGRESS WIDTHS	
SANCTUARY 147 SEATS, 1 OCCUPANT PER SEAT = 147 OCCUPANTS	147 X .2 = 29.4" TOTAL EGRESS WIDTH REQUIRED BY CODE
96" = PRIMARY EGRESS WIDTH PROVIDED TO EXIT	
EXISTING OFFICE 1. 110 S.F./100 GROSS S.F. PER OCCUPANT = 1.1 MAX. OCCUPANTS	1.1 X .2 = 0.22" TOTAL EGRESS WIDTH REQUIRED BY CODE
34" = PRIMARY EGRESS WIDTH PROVIDED TO EXIT - EXISTING	
EXISTING OFFICE 2. 105 S.F./100 GROSS S.F. PER OCCUPANT = 1.1 MAX. OCCUPANTS	1.05 X .2 = 0.21" TOTAL EGRESS WIDTH REQUIRED BY CODE
34" = PRIMARY EGRESS WIDTH PROVIDED TO EXIT - EXISTING	
EXISTING OFFICE 3. 140 S.F./100 NET S.F. PER OCCUPANT = 1.4 MAX. OCCUPANTS	1.4 X .2 = 0.28" TOTAL EGRESS WIDTH REQUIRED BY CODE
34" = PRIMARY EGRESS WIDTH PROVIDED TO EXIT - EXISTING	
EXISTING PASTORS OFFICE 159 S.F./100 GROSS S.F. PER OCCUPANT = 1.5 MAX. OCCUPANTS	1.5 X .2 = 0.30" TOTAL EGRESS WIDTH REQUIRED BY CODE
34" = PRIMARY EGRESS WIDTH PROVIDED TO EXIT - EXISTING	
EXISTING RESTROOM 1. 35 S.F./100 GROSS S.F. PER OCCUPANT = 1 MAX. OCCUPANTS	1 X .2 = 0.20" TOTAL EGRESS WIDTH REQUIRED BY CODE
34" = PRIMARY EGRESS WIDTH PROVIDED TO EXIT - EXISTING	
EXISTING RESTROOM 2. 43 S.F./100 GROSS S.F. PER OCCUPANT = 1 MAX. OCCUPANTS	1 X .2 = 0.20" TOTAL EGRESS WIDTH REQUIRED BY CODE
34" = PRIMARY EGRESS WIDTH PROVIDED TO EXIT - EXISTING	
EXISTING CLASSROOM 1. 259 S.F./20 NET S.F. PER OCCUPANT = 13 MAX. OCCUPANTS	13 X .2 = 2.6" TOTAL EGRESS WIDTH REQUIRED BY CODE
34" = PRIMARY EGRESS WIDTH PROVIDED TO EXIT - EXISTING	
EXISTING CLASSROOM 2. 181 S.F./20 NET S.F. PER OCCUPANT = 9 MAX. OCCUPANTS	9 X .2 = 1.8" TOTAL EGRESS WIDTH REQUIRED BY CODE
34" = PRIMARY EGRESS WIDTH PROVIDED TO EXIT - EXISTING	
EXISTING RECEPTION 77 S.F./100 NET S.F. PER OCCUPANT = 1 MAX. OCCUPANTS	1 X .2 = 0.2" TOTAL EGRESS WIDTH REQUIRED BY CODE
34" = PRIMARY EGRESS WIDTH PROVIDED TO EXIT - EXISTING	
EXISTING LOBBY 125 S.F./100 GROSS S.F. PER OCCUPANT = 1.2 MAX. OCCUPANTS	1.2 X .2 = 0.24" TOTAL EGRESS WIDTH REQUIRED BY CODE
34" = PRIMARY EGRESS WIDTH PROVIDED TO EXIT - EXISTING	
EXISTING KITCHEN 82 S.F./100 GROSS S.F. PER OCCUPANT = 1 MAX. OCCUPANTS	1 X .2 = 0.20" TOTAL EGRESS WIDTH REQUIRED BY CODE
34" = PRIMARY EGRESS WIDTH PROVIDED TO EXIT - EXISTING	



**1 LIFE SAFETY PLAN**  
 SCALE: 1/4" = 1'-0"



**1 FLOOR PLAN**  
SCALE: 1/4" = 1'-0"