

FOR LEASE

# CROW CANYON OFFICE PARK

*Office/Medical Spaces Available  
Now For Lease*

SAN RAMON, CA 94583



*Crow Canyon Office Park*  
*Office/Medical spaces for lease*

Office or Medical permitted uses

4/1,000 Parking

Local ownership

Direct access to suites from parking lot

Easy access to I-680 and numerous retail amenities

*2 MIN*

DRIVE TO I-680

*NOW*

AVAILABLE FOR LEASE



## *Available Office/Medical spaces for lease*

### OFFICE AVAILABILITY

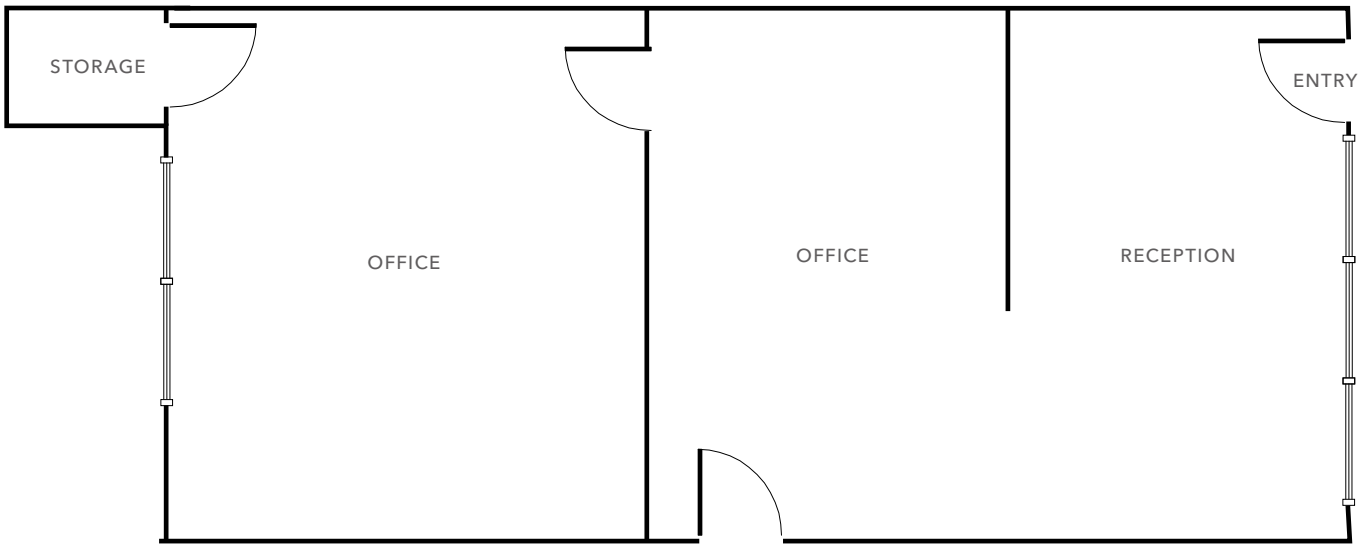
8 CROW CANYON CT	Suite 205	±508 RSF
15 CROW CANYON CT	Suite 110	±713 RSF
2500 OLD CROW CANYON RD BLDG 200	Suite 216	±714 RSF
2500 OLD CROW CANYON RD BLDG 500	Suite 520	±1,255 RSF

## *For more leasing information contact*

WILL BALLOWE  
925.389.2499  
will.ballowe@kidder.com  
LIC N° 02053125



8 CROW CANYON CT, SUITE 205



±508 RSF

AVAILABLE

2ND FLOOR

LOCATION

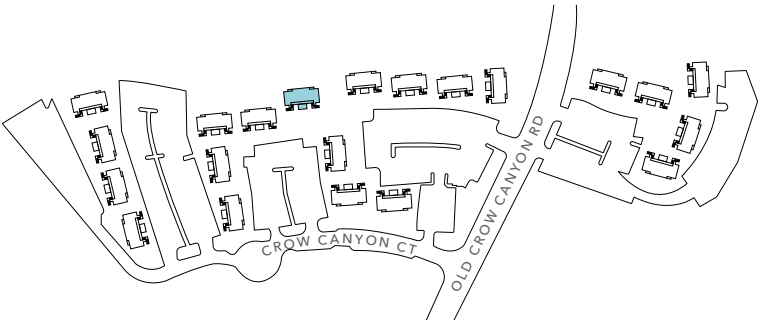
CALL

BROKER FOR LEASING RATE

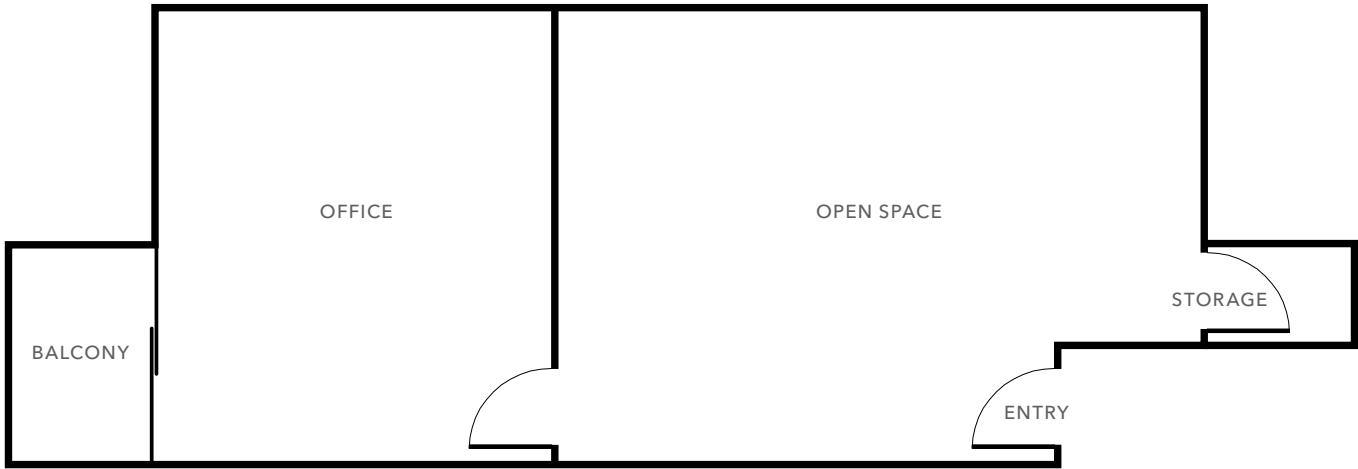
NOW

AVAILABLE

FLOOR PLAN NOT TO SCALE



15 CROW CANYON CT, SUITE 110



±713 RSF

AVAILABLE

1ST FLOOR

LOCATION

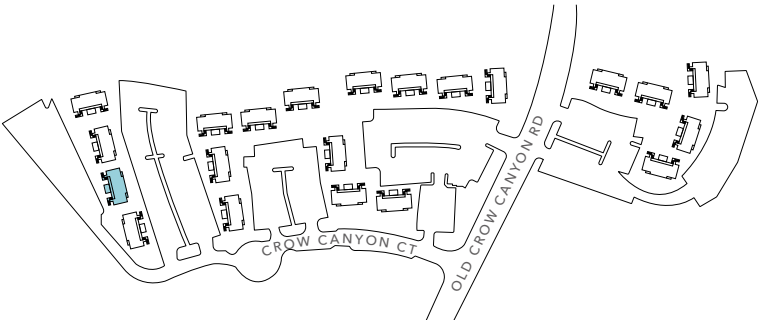
CALL

BROKER FOR LEASING RATE

NOW

AVAILABLE

FLOOR PLAN NOT TO SCALE

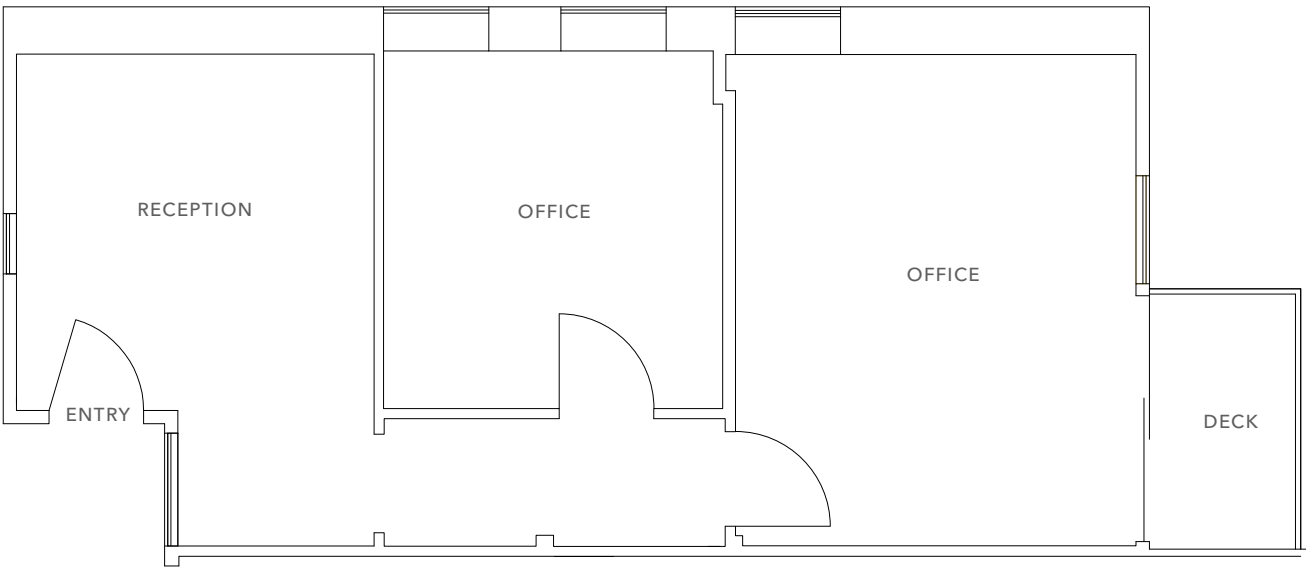


AVAILABLE FOR LEASE

KIDDER MATHEWS

BUILDING 200, SUITE 216

2500 OLD CROW CANYON RD



FLOOR PLAN NOT TO SCALE

*±714 RSF*

AVAILABLE

*1ST FLOOR*

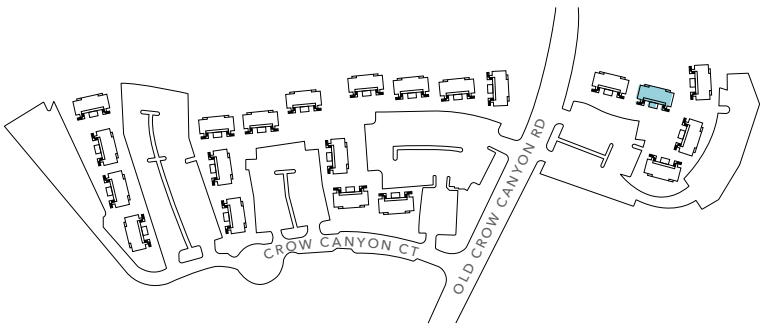
LOCATION

*NOW*

AVAILABLE

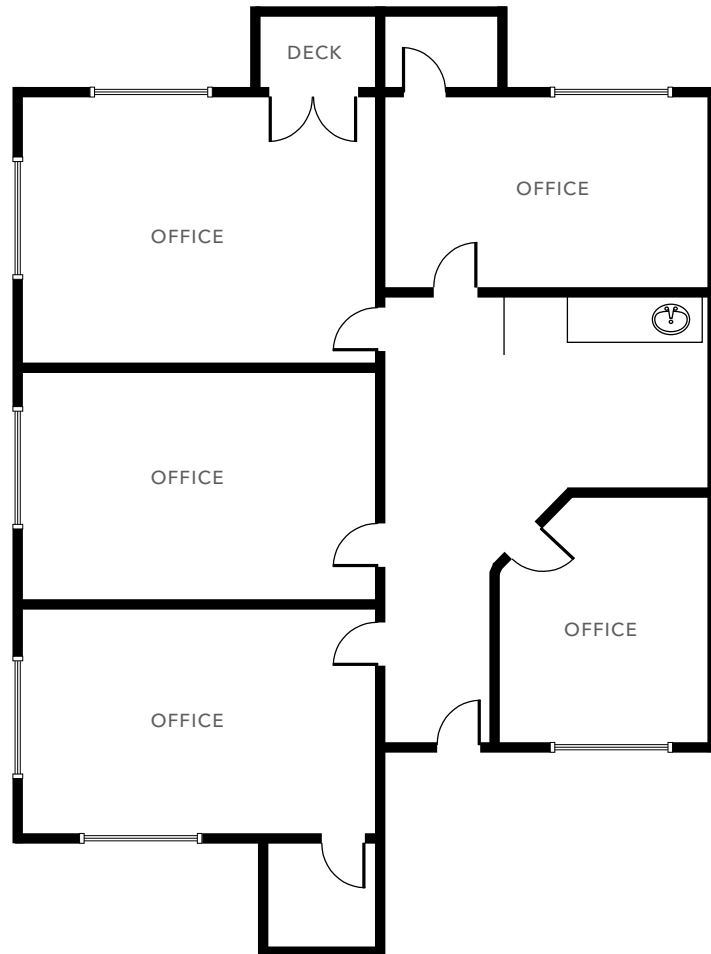
*CALL*

BROKER FOR LEASING RATE



# BUILDING 500, SUITE 520

2500 OLD CROW CANYON RD



FLOOR PLAN NOT TO SCALE

AVAILABLE FOR LEASE

*±1,255 RSF*

AVAILABLE

*2ND FLOOR*

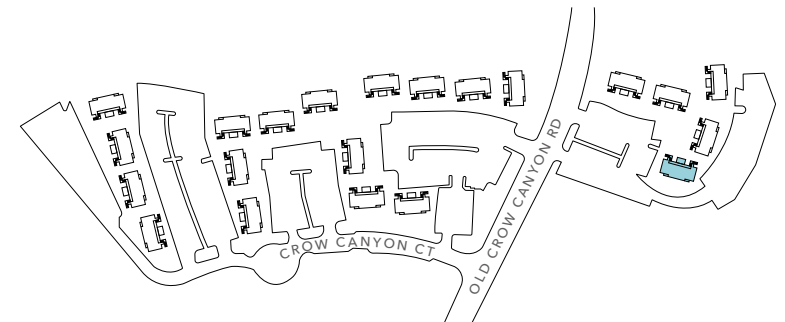
LOCATION

*CALL*

BROKER FOR LEASING RATE

*NOW*

AVAILABLE



KIDDER MATHEWS



# CROW CANYON OFFICE PARK

*For more information on  
this property, please contact*

**WILL BALLOWE**  
925.389.2499  
will.ballowe@kidder.com  
**LIC N° 02053125**

**KIDDER.COM**

This information supplied herein is from sources we deem reliable. It is provided without any representation, warranty, or guarantee, expressed or implied as to its accuracy. Prospective Buyer or Tenant should conduct an independent investigation and verification of all matters deemed to be material, including, but not limited to, statements of income and expenses. Consult your attorney, accountant, or other professional advisor.

