

# WALNUT CREEK CIVIC PLAZA

1655 N. MAIN STREET, WALNUT CREEK, CA 94596

MAIN STREET RETAIL - OFFICE SPACE FOR LEASE ~ JULY 2023



## SUITE 102 – N MAIN STREET RETAIL –2,452 RSF

- ◆ High Exposure Main St Frontage & Signage
- ◆ Auxiliary HVAC for after Hour Business
- ◆ Attended Building Parking - Secured , Cameras, Evening Parking
- ◆ P-R Zoning - Food - Retail - Financial.
- ◆ 60,000 SF Professional Building : Dedicated,

### RETAIL SPACE

- ◆ Suite 100: 6,321 RSF; former US BANK—Building Signage
- ◆ Suite 104: 2,453 RSF; Main St Frontage. Former Salon

### OFFICE SPACE

- ◆ Suite 355: 1,759 RSF: 3+ Privates, High Glass, Large Conference Open Area, Large Kitchen Area. Room to Add Private Office.
- ◆ Suite 290: 1,528 RSF; Modern Buildout Corner View Location. 5 Large Private offices W/Full-Height Glass. Kitchenette.

**Building Includes Large Community Conference Room**

## GATEWAY LOCATION ~ CONTEMPORARY BUILDING

- ◆ Prominent, Core downtown Walnut Creek Location.
- ◆ 60,000 SF at North Main Street & Civic Drive.
- ◆ Walk to downtown restaurants, retail services & BART.
- ◆ Excellent access to freeways & major roadways
- ◆ Central open atrium with large fountain & tree ferns.
- ◆ New restrooms - New retail signage.
- ◆ Updated 25, 000 square feet of office .
- ◆ Excellent Glass-line ratio for every office suite.
- ◆ Community 12-seat conference room
- ◆ Two new elevators serving all floors & parking.
- ◆ Building Parking is attended, gated & efficient.
- ◆ 1/2 block to 3 story municipal parking structure.

**Floorplans Attached**

## The Briner Property Group

1777 N California Blvd, Suite 300 ~ Walnut Creek, CA 94596

Daniel Briner, CCIM BRE#00605037 (925) 256-8500 DBriner@CCIM.Net

# WALNUT CREEK CIVIC PLAZA



## TOP FLOOR VIEW



## The Briner Property Group

1777 N California Blvd, Suite 300 ~ Walnut Creek, CA 94596  
Daniel Briner, CCIM BRE#00605037 (925) 256-8500 DBriner@CCIM.Net

## MAIN STREET FRONTAGE RETAIL SPACE

- ◆ 2,803 RSF+- First Floor End Cap Fronting Main St, Downtown Walnut Creek.
- ◆ Newly Expanded and Renovated. Two Sides of Full Height Glass Storefront, High Ceilings & Frontage Signage to Main Street. Outdoor Patio for Seatings
- ◆ Secured Day & Evening Parking in Gated Building Garage.



## The Briner Property Group

1777 N California Blvd, Suite 300 ~ Walnut Creek, CA 94596  
Daniel Briner, CCIM BRE#00605037 (925) 256-8500 DBriner@CCIM.Net

# RETAIL SPACE

**ROBERTS  
BOCHÉ  
ASSOCIATES**  
555 FIRST STREET, SUITE 300  
BENICIA, CA 94510  
PH: 707.747.4330  
FX: 707.747.4333

PROJECT:

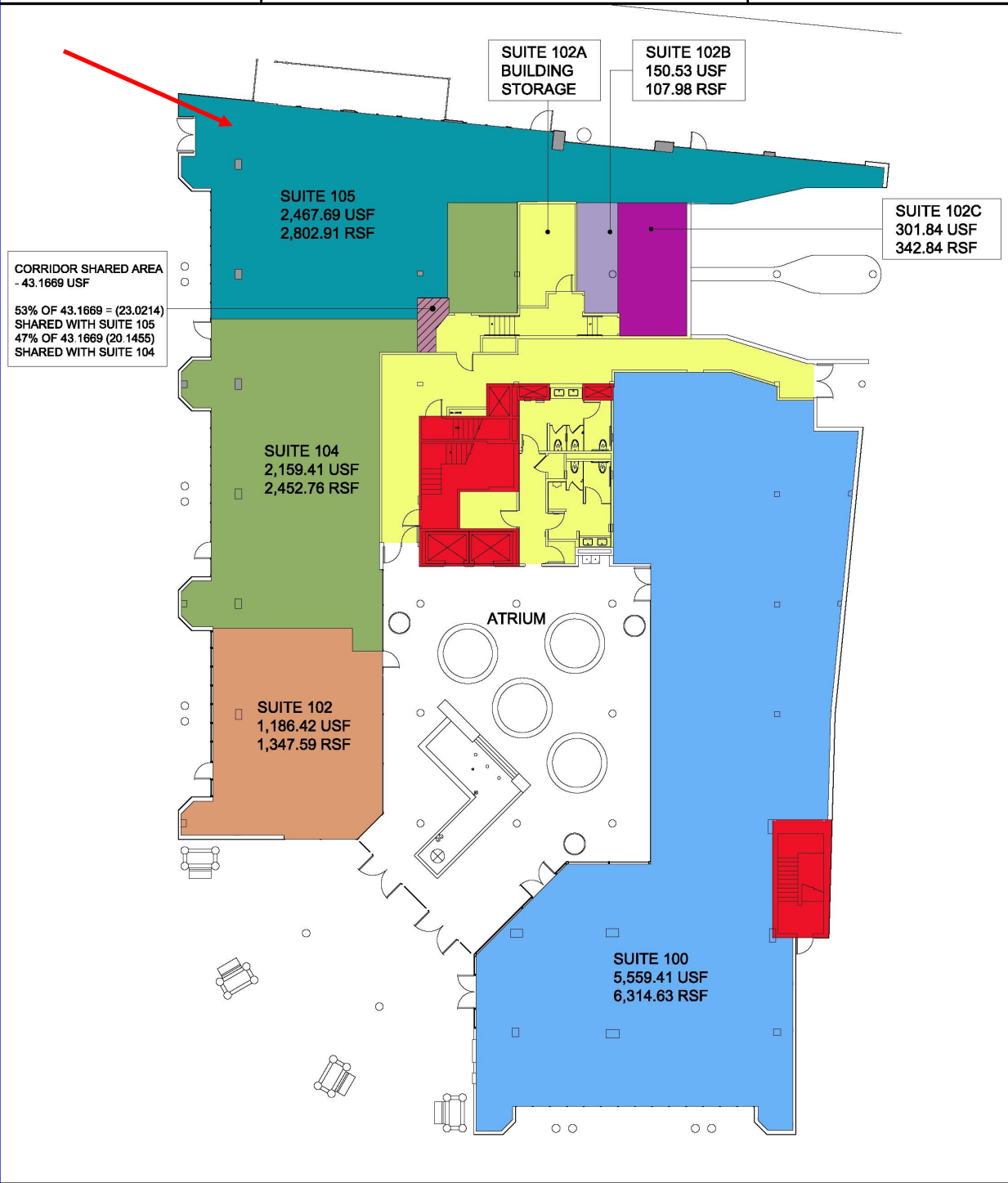
## CIVIC PLAZA

1ST FLOOR  
1655 N. MAIN STREET  
WALNUT CREEK, CA

AREA CALC

### AC.2

JOB NUMBER: LS065  
DATE: 04.04.19  
SCALE: NONE  
SHEET NO.: 1 OF 3



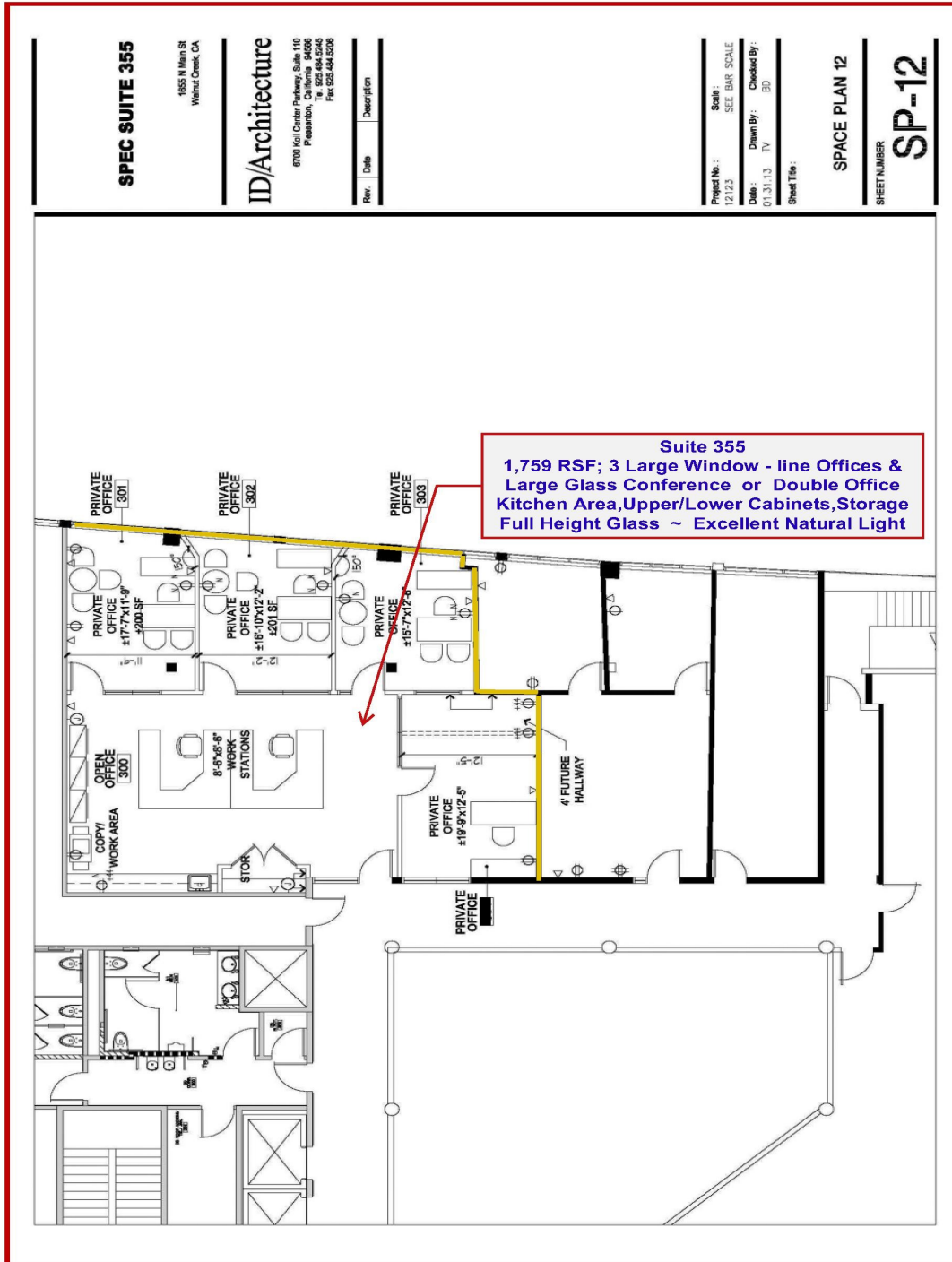
## The Briner Property Group

1777 N California Blvd, Suite 300 ~ Walnut Creek, CA 94596  
Daniel Briner, CCIM BRE#00605037 (925) 256-8500 DBriner@CCIM.Net

# RETAIL—OFFICE SPACE

## 1655 N MAIN STREET, WALNUT CREEK, CA ~ SUITE 355

SUITE 355  
1655 N MAIN ST., CIVIC PLAZA, WALNUT CREEK, CA

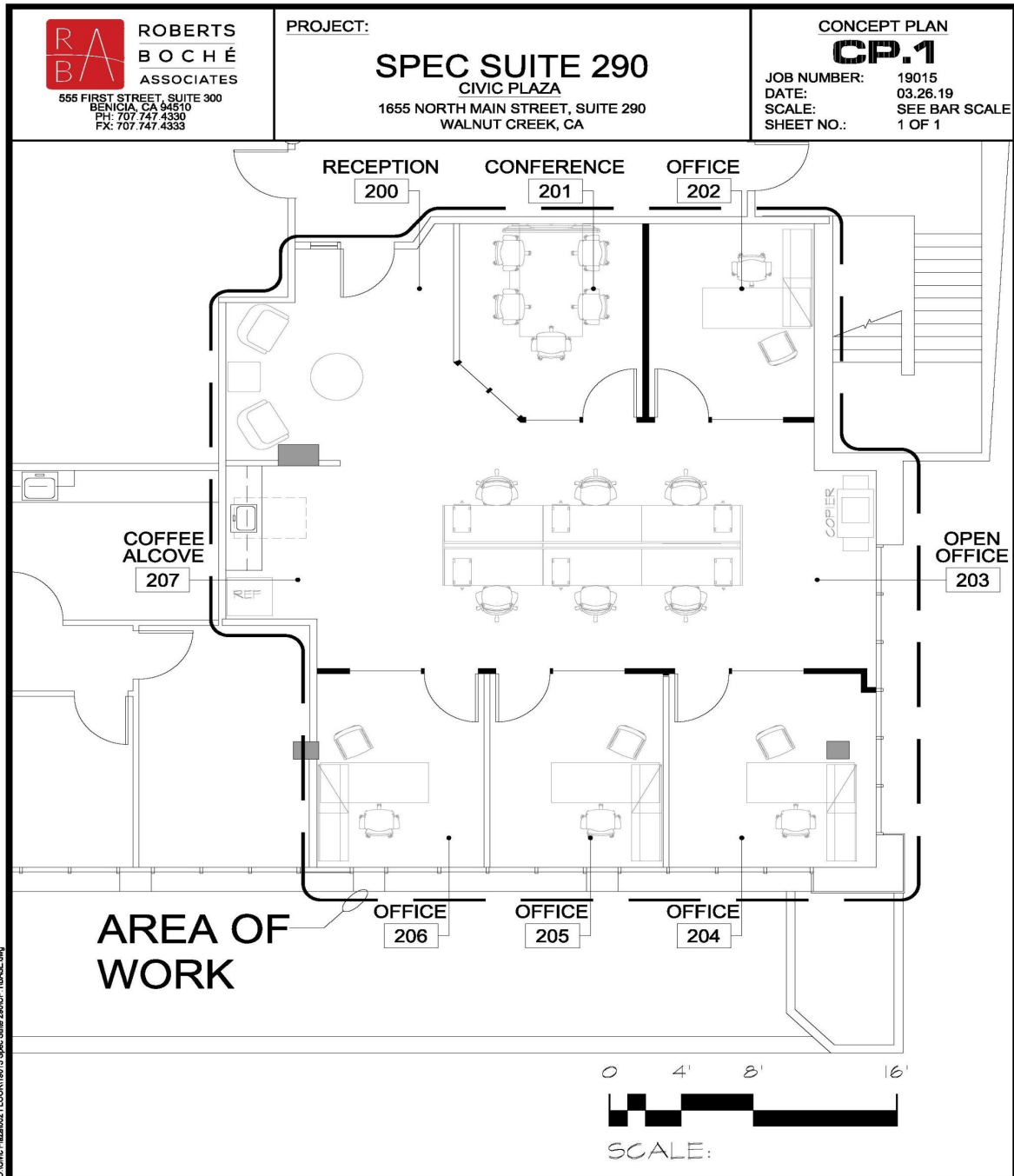


**The Briner Property Group**  
1777 N California Blvd, Suite 300 ~ Walnut Creek, CA 94596  
Daniel Briner, CCIM BRE#00605037 (925) 256-8500 DBriner@CCIM.Net

# OFFICE SPACE

## 1655 N MAIN STREET, WALNUT CREEK, CA ~SUITE 290

1,528 RSF; FULL - HEIGHT GLASS AND DOORS (2019 BUILDOUT)  
THREE LARGE WINDOW LINE OFFICES, TWO INTERIOR OFFICES  
SMALL RECEPTION, KITCHEN AREA WITH DOUBLE CABINETS



NOT FOR CONSTRUCTION

**The Briner Property Group**  
1777 N California Blvd, Suite 300 ~ Walnut Creek, CA 94596  
Daniel Briner, CCIM    BRE#00605037    (925) 256-8500    DBriner@CCIM.Net

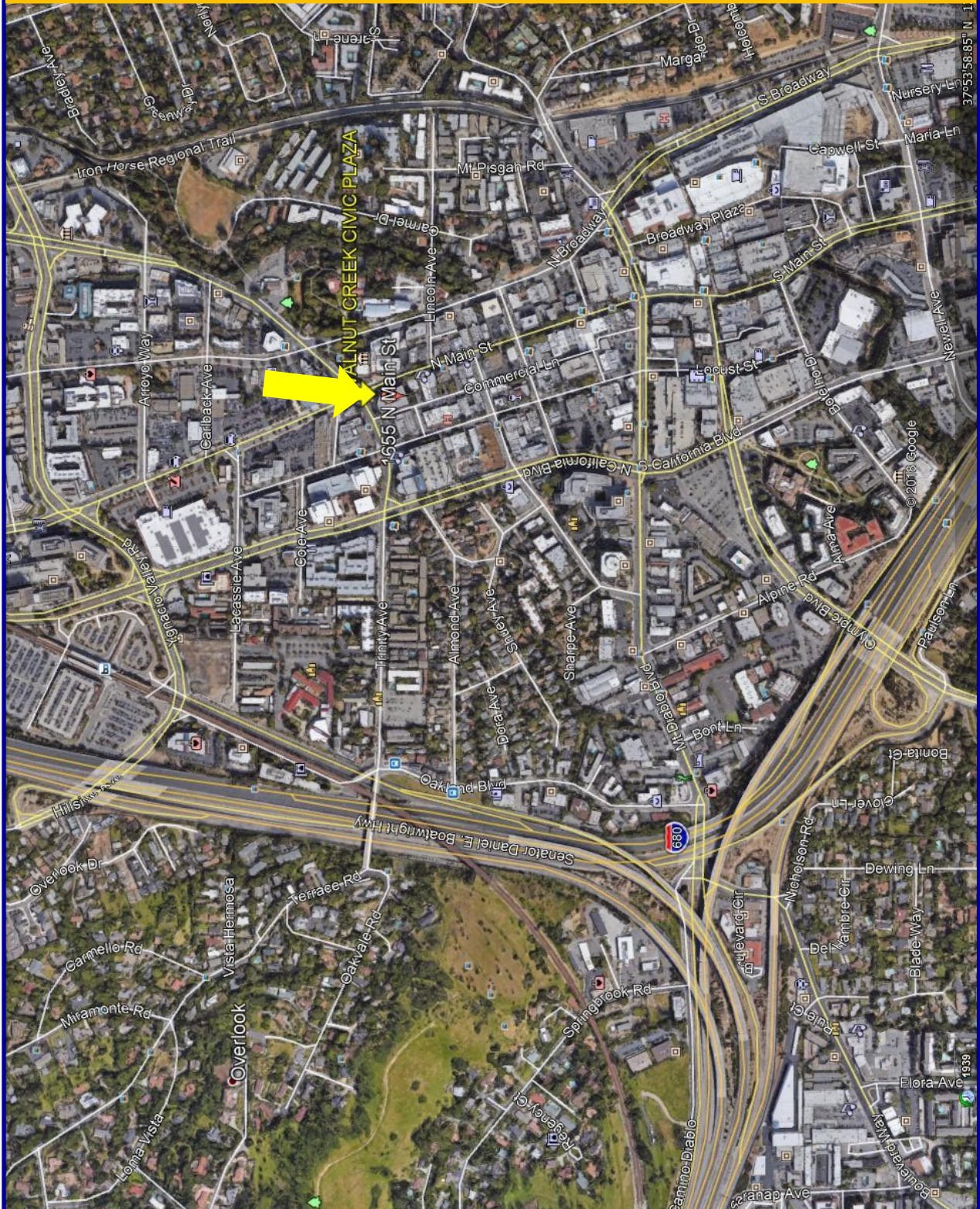
## MAIN STREET FRONTAGE RETAIL SPACE



### The Briner Property Group

1777 N California Blvd, Suite 300 ~ Walnut Creek, CA 94596  
Daniel Briner, CCIM BRE#00605037 (925) 256-8500 DBriner@CCIM.Net

# RETAIL—OFFICE SPACE 1655 N MAIN STREET, WALNUT CREEK, CA



**The Briner Property Group**  
1777 N California Blvd, Suite 300 ~ Walnut Creek, CA 94596  
Daniel Briner, CCIM BRE#00605037 (925) 256-8500 DBriner@CCIM.Net