

# 700 Dresher Road | Suite 100

Horsham, PA 19044

**workspace**  
property trust

## 58,115 SF Divisible Office Space Available Now

Office Space



# 700 Dresher Road I Suite 100

Horsham, Pennsylvania, 19044



Scan for full tour

## PROPERTY HIGHLIGHTS

### AMENITIES

700 Dresher Road, a fully furnished, high-finish office space. This efficient full 2nd floor plan boasts three sides of glass, providing an abundance of natural light throughout the workspace. With ample parking available, tenants can enjoy on-site EV charging stations perfect for high-density users.

Tenants enjoy the proximity to countless lifestyle centers, the walkability to restaurants, and numerous on-site amenities throughout our campus such as:

- On-site Beer Garden at 100 Lakeside
- On-site EV charging stations throughout campus
- On-site Fitness Center at 100 Lakeside
- Synergy at 100 Lakeside Conference Center
- Fully equipped conference facility at 200 Gibraltar
- Access to (5) daycares minutes from the office
- 555 Flats Luxury Living under 1 mile away
- Shopping at the Upper Dublin Promenade under 2 miles away

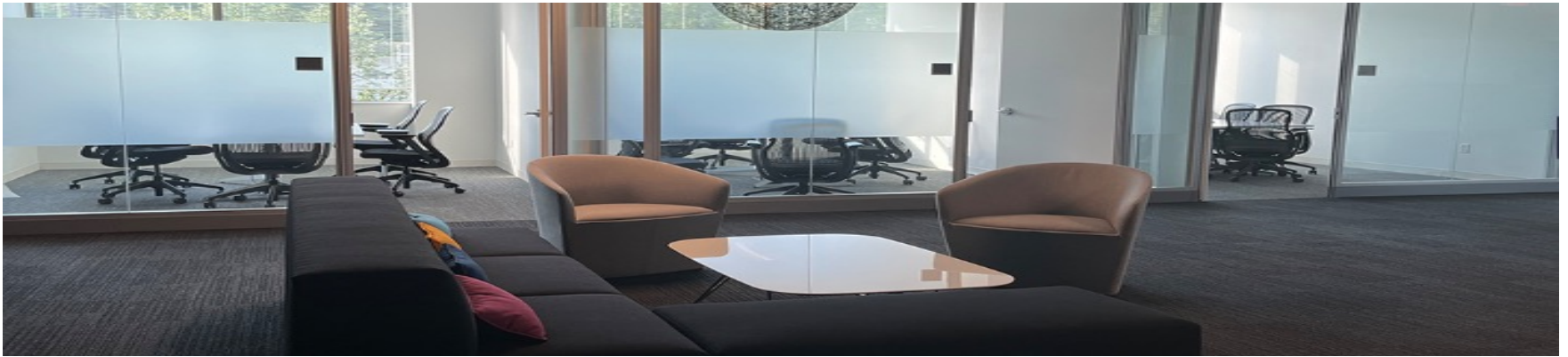
**Building Owner: Workspace Property Trust**

**Total Building Size: 110,000**

**Ceiling Height: 8'6"**

**58,115 SF Available Now** Office





Kitchen Area



Conference Room

58,115 SF Available Now

700 Dresher Road | Suite 100

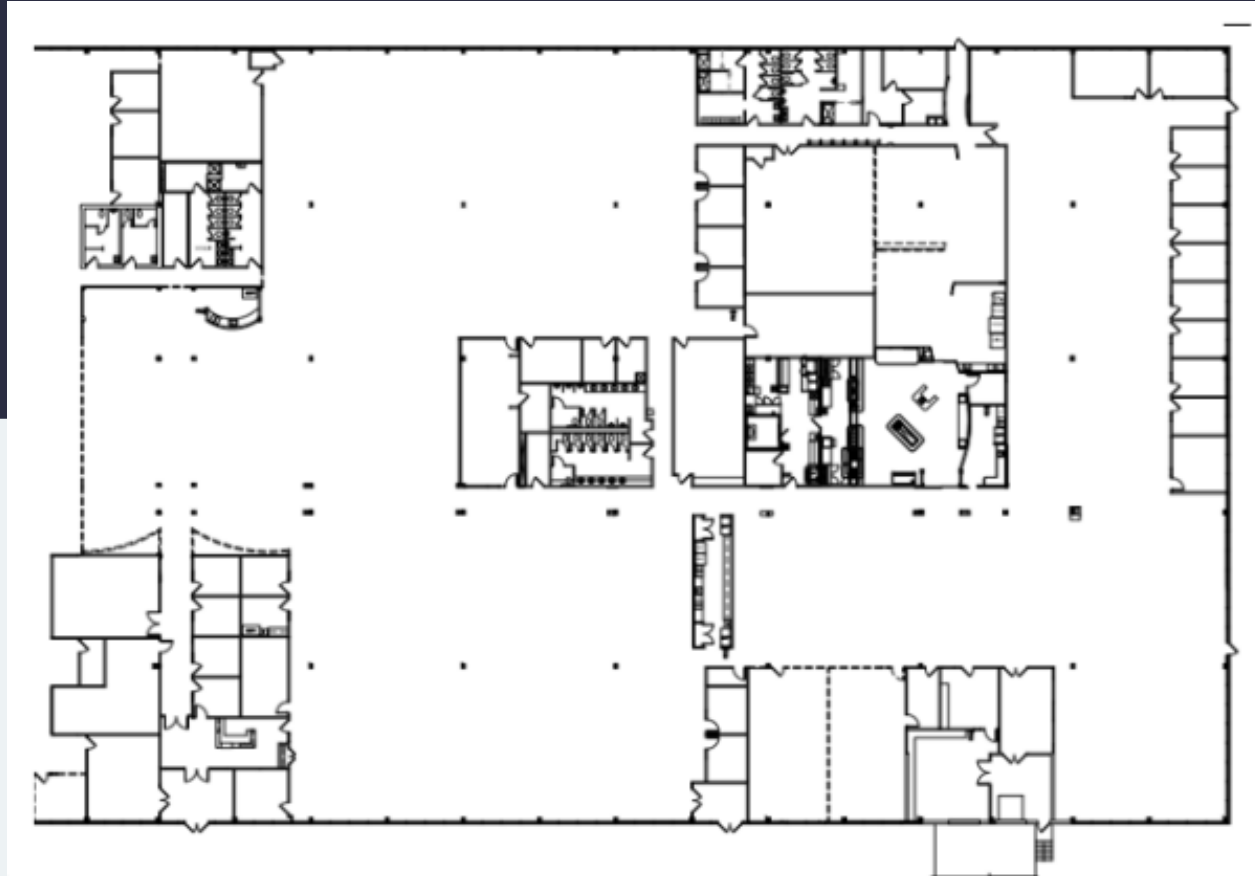
# 700 Dresher Road I Suite 100

Horsham, Pennsylvania 19044

**workspace**  
property trust

## 58,115 SF Available for Lease

Office Space



## Leasing Information

700 Dresher Road, Suite 150  
(215) 328-2732  
[www.workspaceproperty.com](http://www.workspaceproperty.com)

Doug Himmelreich  
Director of Leasing  
[D.Himmelreich@workspaceproperty.com](mailto:D.Himmelreich@workspaceproperty.com)



# Spaces for the Way Work Happens Today.

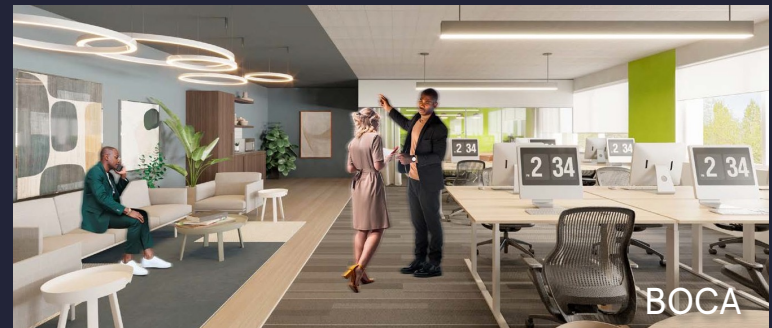
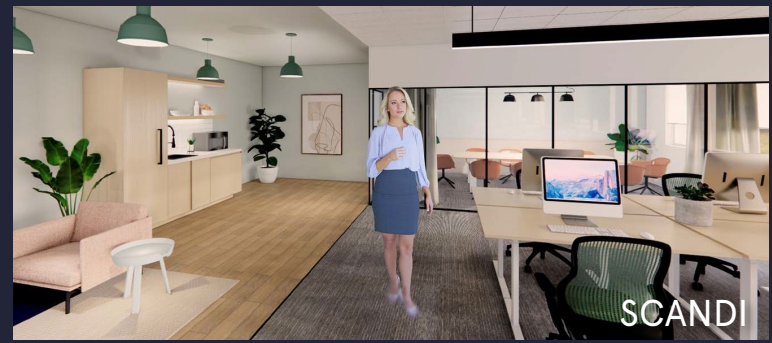
These beautifully designed themes inspire creativity and encourage productivity. Whether you are looking for 1,000 square feet or 100,000 square feet, our in-house design & development team can deliver a turnkey office solution.

## Tailored for the Evolution of Office:

- "A La Carte" or "On Demand" Furniture Packages Available
- Plug & Play IT Packages Available



**Scan here** to learn more about our premium theme selects.



\*Indicative of the look and feel (not the actual suite)