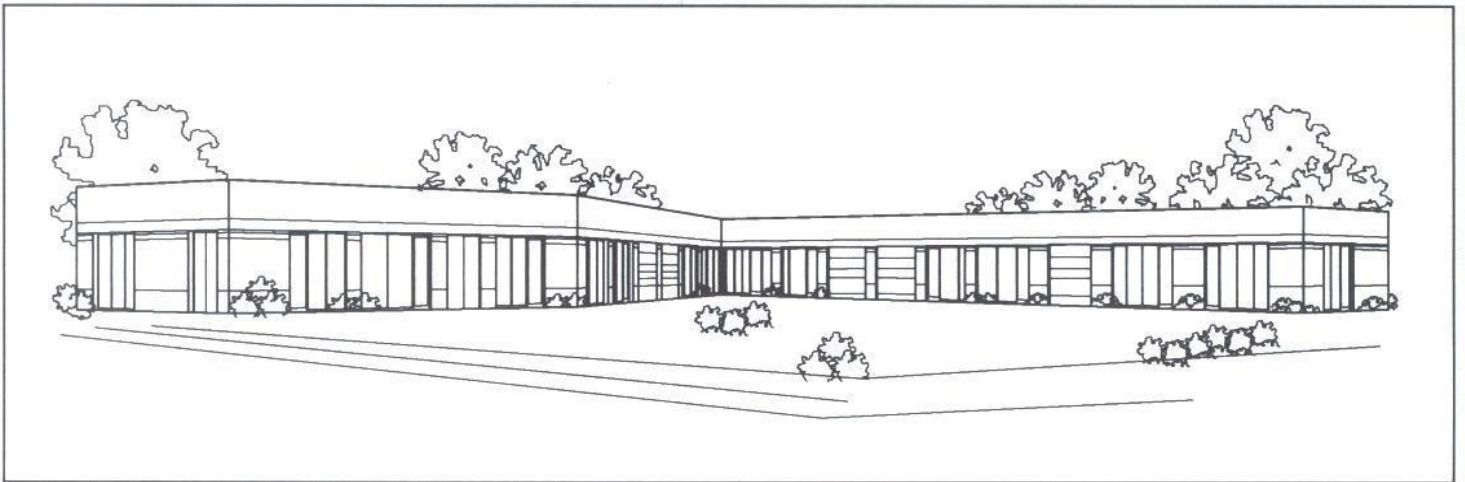




**CENTRAL
PARK**

BUSINESS CENTER

**SMALL UNIT
OFFICE WAREHOUSE
CENTRAL SOUTHEAST LOCATION**



CHERRY CREEK DRIVE AND EAST ILIFF AVENUE

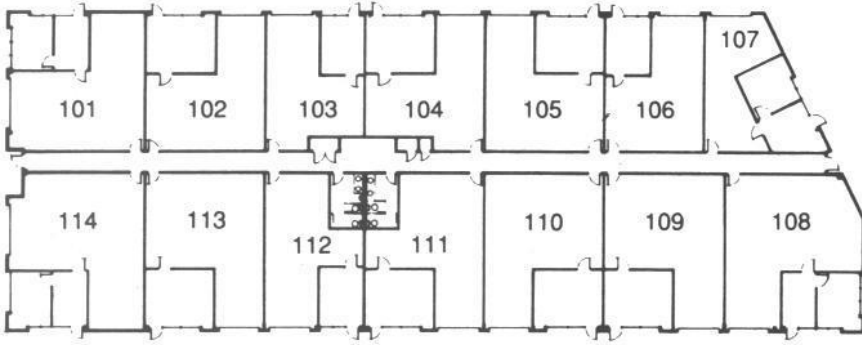
UNITS FROM 650 TO 1535 S.F.

FEATURES

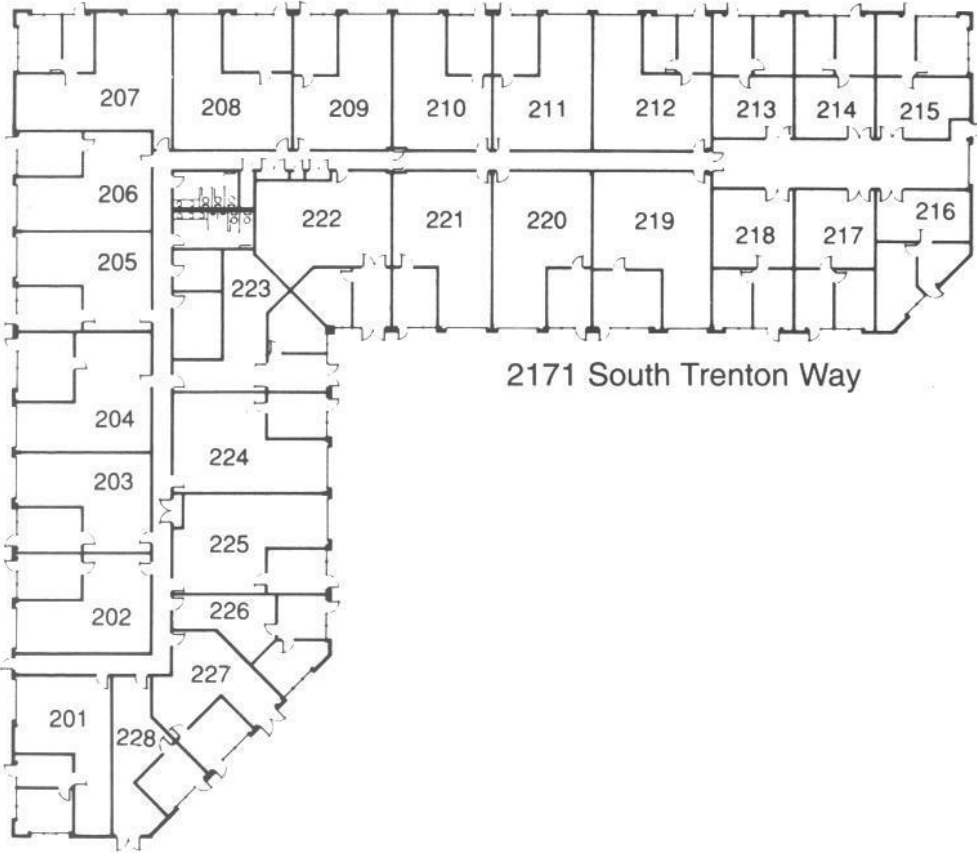
- Excellent Location With Easy Access to Both I-25 and I-225
- Large Building Signage
- One or Two Offices
- Individual Glass Entrances
- 10' x 10' Drive-In Doors
- Conference Room
Provided for All Tenants
- Arapahoe County Tax Base

**For More Information
Contact:**

Fall River Investments, Inc.
7700 East Iliff Avenue
Suite F
Denver, Colorado 80231
(303) 752-2051

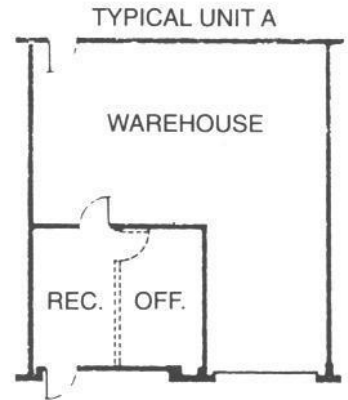


2111 South Trenton Way



2171 South Trenton Way

CENTRAL
PARK
OFFICE WAREHOUSE



TYPICAL UNIT B

