

FLEX FOR LEASE 10983 GUILFORD ROAD

10983 Guilford Road, Annapolis Junction, MD 20701

Available: 2,400 - 4,800 SF



LISTING DATA

AVAILABLE SF: 2,400 - 4,800 SF

PROPERTY INFORMATION

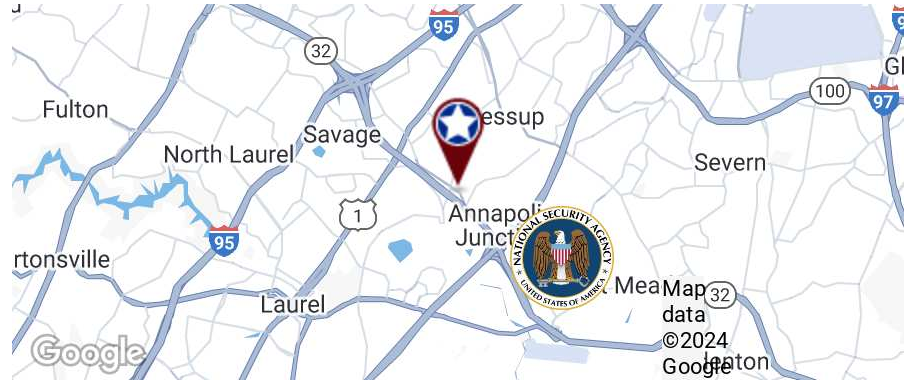
COUNTY: Howard
MARKET: Baltimore
SUBMARKET: Route 1 Corridor

BUILDING DATA

TOTAL BUILDING SF: 19,800 SF
YEAR BUILT: 1989
ZONING: M-2

PROPERTY HIGHLIGHTS

- 2 docks
- 60 free surface parking spaces available
- Close proximity to Route-1, MD-295, and Route 32



SPACE OVERVIEW

Space A and B are each 2,400sf and can be combined for a total of 4,800sf. Both spaces have a loading dock and about 600sf of office each.

LOCATION OVERVIEW

Great location! Close proximity to Route-1, MD-295, National Business, and NSA.

Kate Jordan, SIOR
Principal
410.336.5314
kjordan@lee-associates.com

Marley Black, SIOR
Principal
443.741.4050
mwelsh@lee-associates.com

All information furnished regarding property for sale, rental or financing is from sources deemed reliable, but no warranty or representation is made to the accuracy thereof and same is submitted to errors, omissions, change of price, rental or other conditions prior to sale, lease or financing or withdrawal without notice. No liability of any kind is to be imposed on the broker herein.

FLEX FOR LEASE

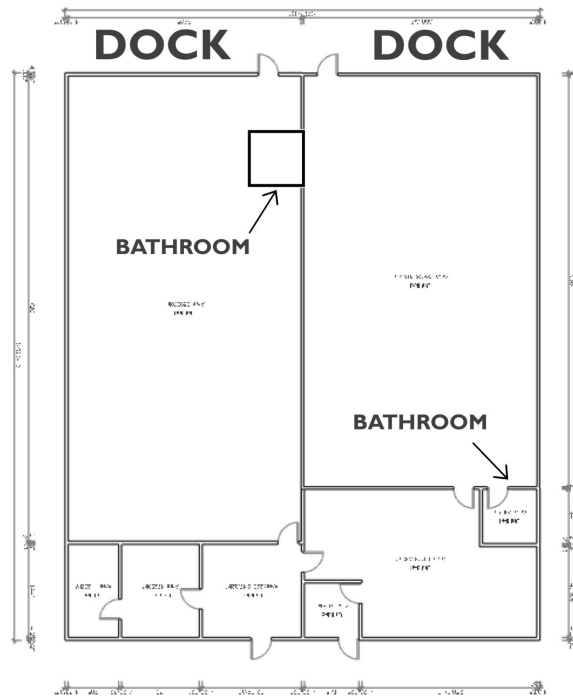
10983 GUILFORD ROAD

10983 Guilford Road, Annapolis Junction, MD 20701

Available: 2,400 - 4,800 SF



COMMERCIAL REAL ESTATE SERVICES



AVAILABLE SPACES

SUITE	SIZE (SF)	LEASE TYPE	LEASE RATE	DESCRIPTION
A	2,400 SF	NNN	\$16.00 SF/yr	Available November 1.
B	2,400 SF	NNN	\$16.00 SF/yr	Available June 1.

Kate Jordan, SIOR
Principal
410.336.5314
kjordan@lee-associates.com

Marley Black, SIOR
Principal
443.741.4050
mwelsh@lee-associates.com

All information furnished regarding property for sale, rental or financing is from sources deemed reliable, but no warranty or representation is made to the accuracy thereof and same is submitted to errors, omissions, change of price, rental or other conditions prior to sale, lease or financing or withdrawal without notice. No liability of any kind is to be imposed on the broker herein.