



# Biltmore Terrace

2122 E. Highland Avenue, Phoenix, AZ 85016

3rd Floor Availabilities: Suite 300: 9,432 SF  
Suite 325: 3,470 SF





# About the property

Located just east of the SR-51 freeway off Highland Avenue and 22nd Street

Near countless amenities within Town & Country Shopping Center, Camelback Colonnade, The Esplanade and Biltmore Fashion Park

An unmatched location at an exceptional value

Best parking ratio in the Camelback Corridor at 7/1,000

Monument signage available fronting Highland Avenue

Newly renovated common area & recent modern upgrades



# Highlights:

Total building size: 53,862 SF

Incredible views from the upper floors

Unique contiguous glass line

Total SF available: 12,902 SF

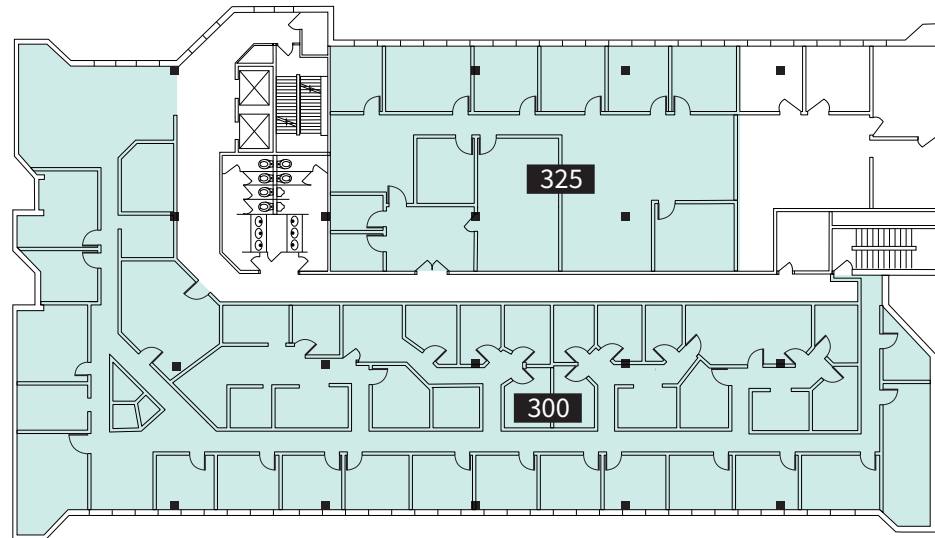
Parking: 4.5/1,000 – 7/1,000 overflow

Join Abrazo Medical Group, Spooner PT, Medix Infusion and others

4-story building

Property Manager on site

# Availabilities:



## 3rd Floor

Suite 300: 9,432 SF

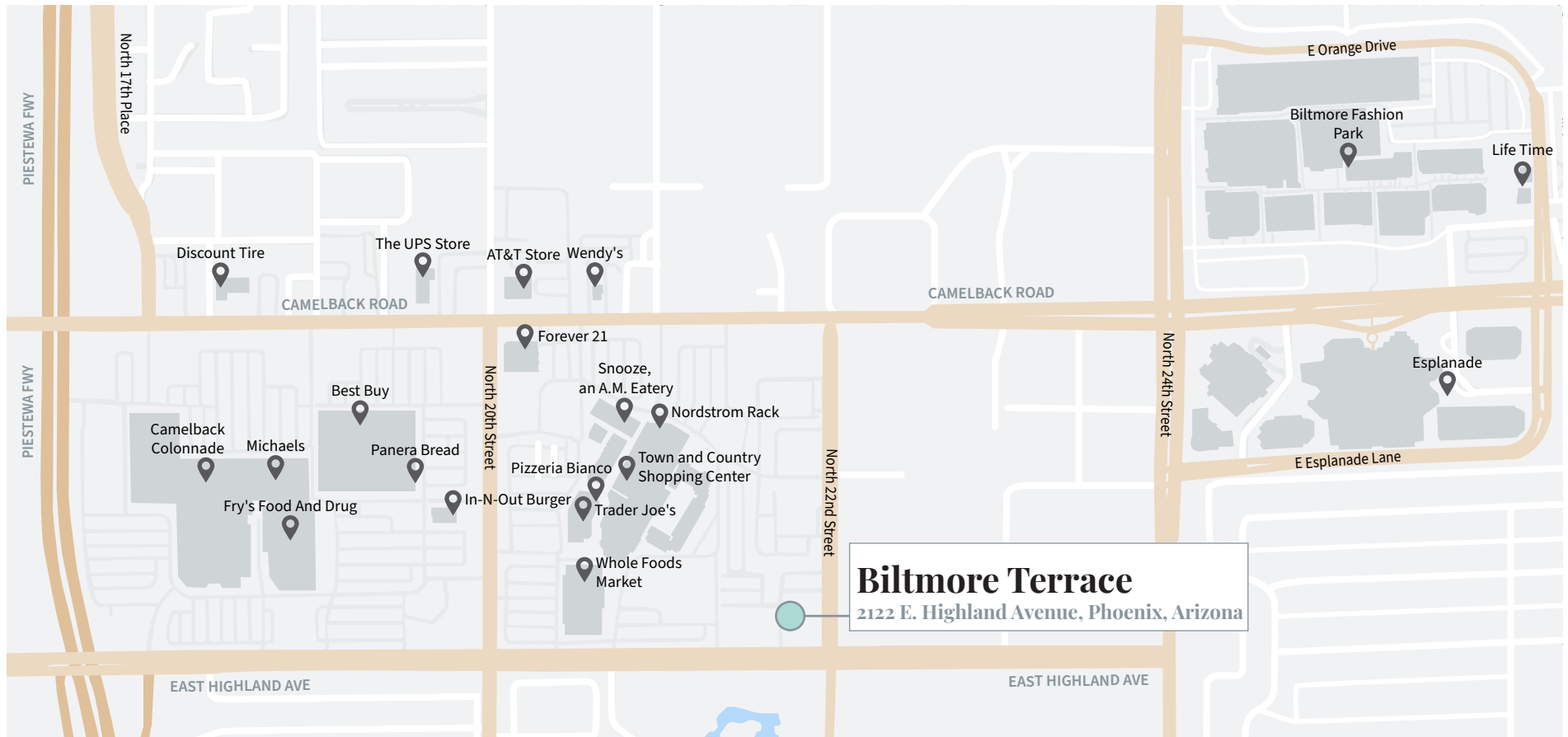
Suite 325: 3,470 SF

Current Medical build out

Current Administrative build out



## Location





# The Camelback Corridor



For leasing information,  
please contact:

**Katie McIntyre**  
Senior Vice President,  
Healthcare

T +1 602 282 6357  
M +1 602 538 3855  
katie.mcintyre@jll.com

**Mari Lederman**  
Senior Vice President,  
Healthcare

T +1 602 282 6325  
M +1 602 705 8870  
mari.lederman@jll.com

Although information has been obtained from sources deemed reliable, neither Owner nor JLL makes any guarantees, warranties or representations, express or implied, as to the completeness or accuracy as to the information contained herein. Any projections, opinions, assumptions or estimates used are for example only. There may be differences between projected and actual results, and those differences may be material. The Property may be withdrawn without notice. Neither Owner nor JLL accepts any liability for any loss or damage suffered by any party resulting from reliance on this information. If the recipient of this information has signed a confidentiality agreement regarding this matter, this information is subject to the terms of that agreement. ©2024. Jones Lang LaSalle IP, Inc. All rights reserved.

