



2-Story
Boutique
Office
Opportunity

Covered
Parking
Available

Metro
Accessible

7735 Old Georgetown Road

Bethesda, Maryland 20814

Suite	SF	Date Available	Asking Rate
LL	3,427 SF	Immediately	\$22.50 FS
100	7,451 SF	Immediately	\$39.50 FS
200	8,145 SF	Immediately	\$35.00 FS

- On-site covered parking (1/1,000 SF)
- Many dining options and amenities nearby in the Woodmont Triangle and CBD Bethesda
- 2 blocks from Bethesda Metro station
- Easy access to I-495 & I-270



For Leasing Information: 301.304.8300

Paul (Rocky) Kern
301.304.8399
pkern@lpc.com

Tim Weitzel
301.304.8397
tweitzel@lpc.com

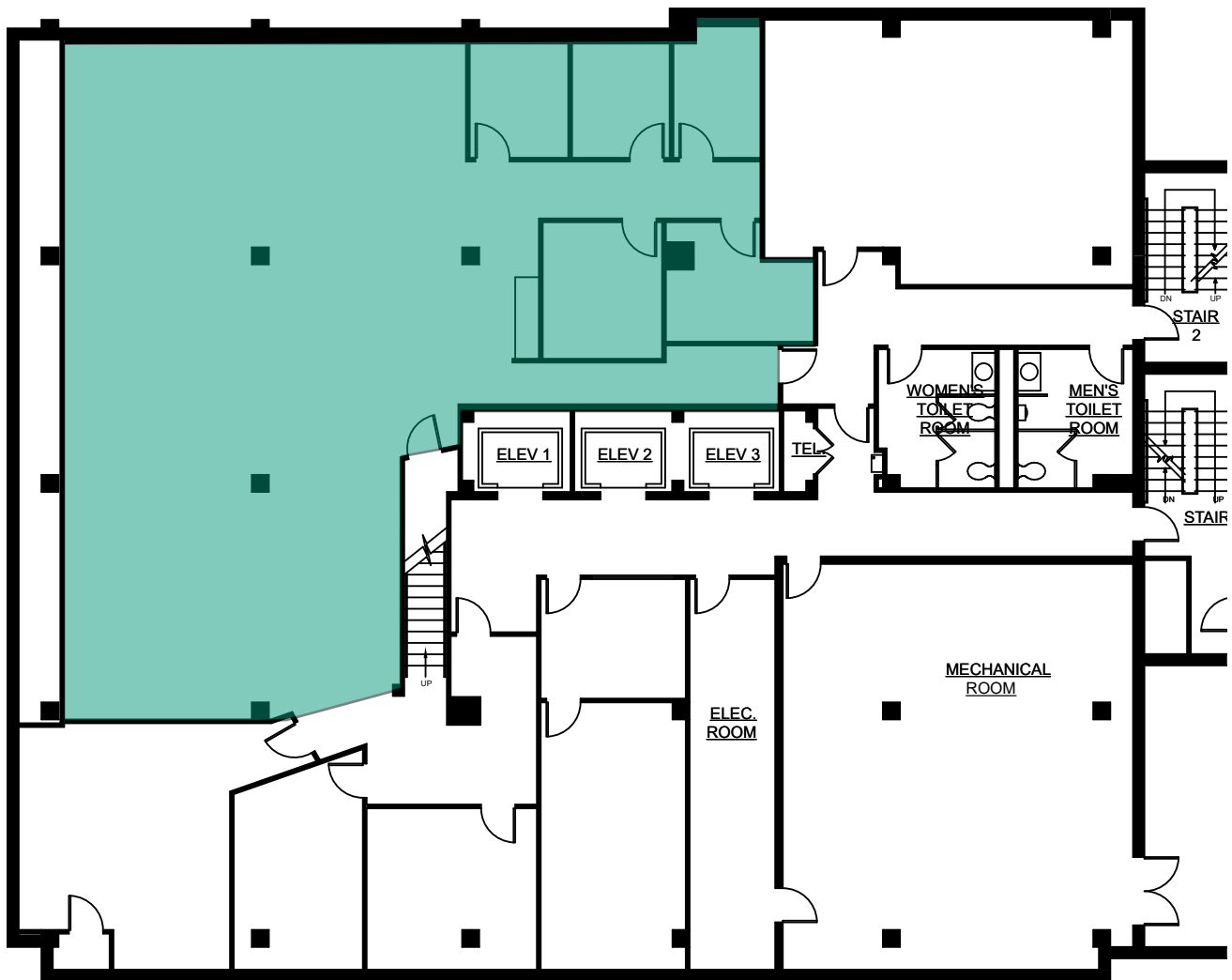


7735 Old Georgetown Road

Bethesda, Maryland 20814

Floor Plans

Lower Level - 3,427 SF



For Leasing Information: 301.304.8300

Paul (Rocky) Kern
301.304.8399
pkern@lpc.com

Tim Weitzel
301.304.8397
tweitzel@lpc.com

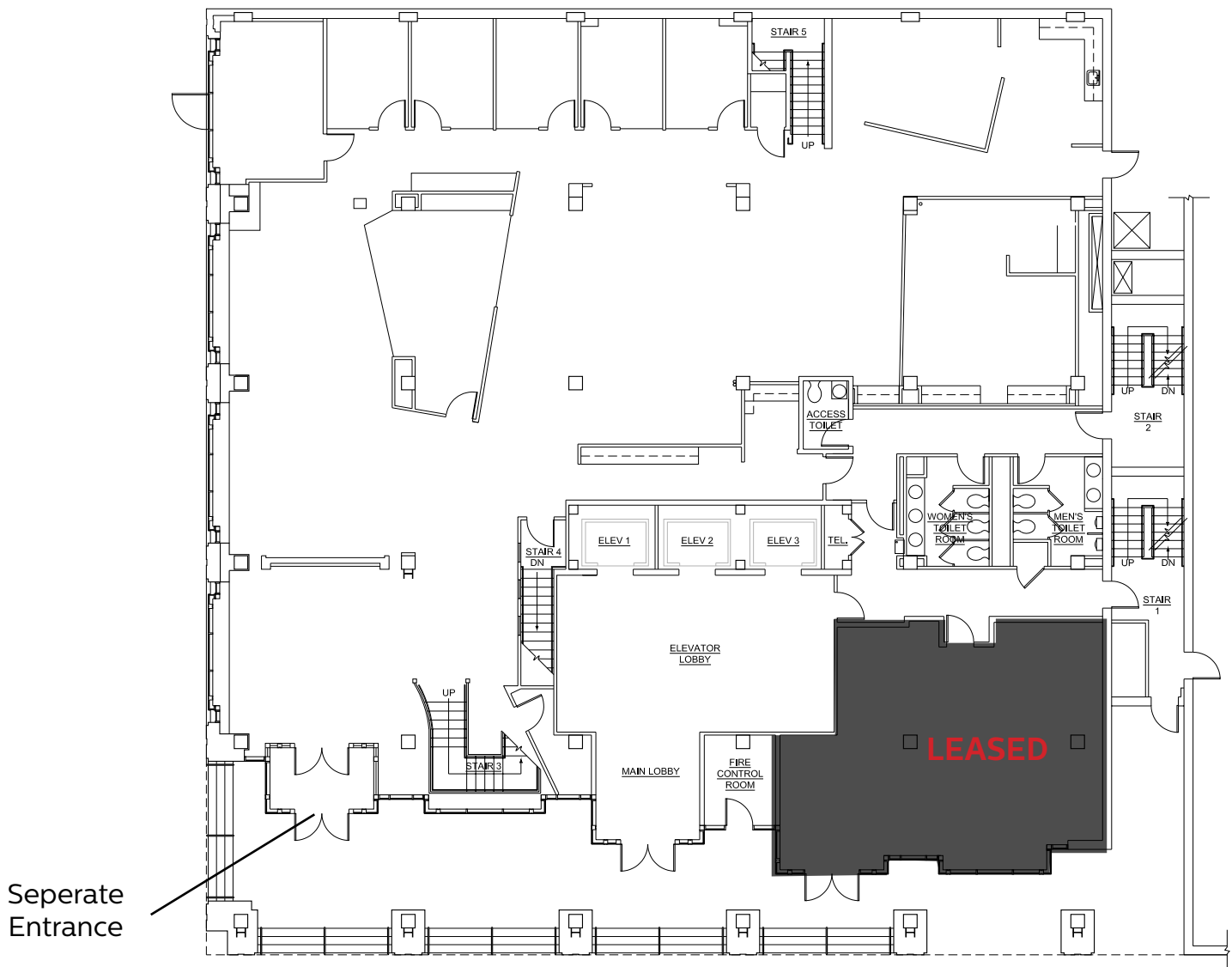
LINCOLN
PROPERTY
COMPANY

7735 Old Georgetown Road

Bethesda, Maryland 20814

Floor Plans

1st Floor, Suite 100 - 7,451 SF



For Leasing Information: 301.304.8300

Paul (Rocky) Kern
301.304.8399
pkern@lpc.com

Tim Weitzel
301.304.8397
tweitzel@lpc.com

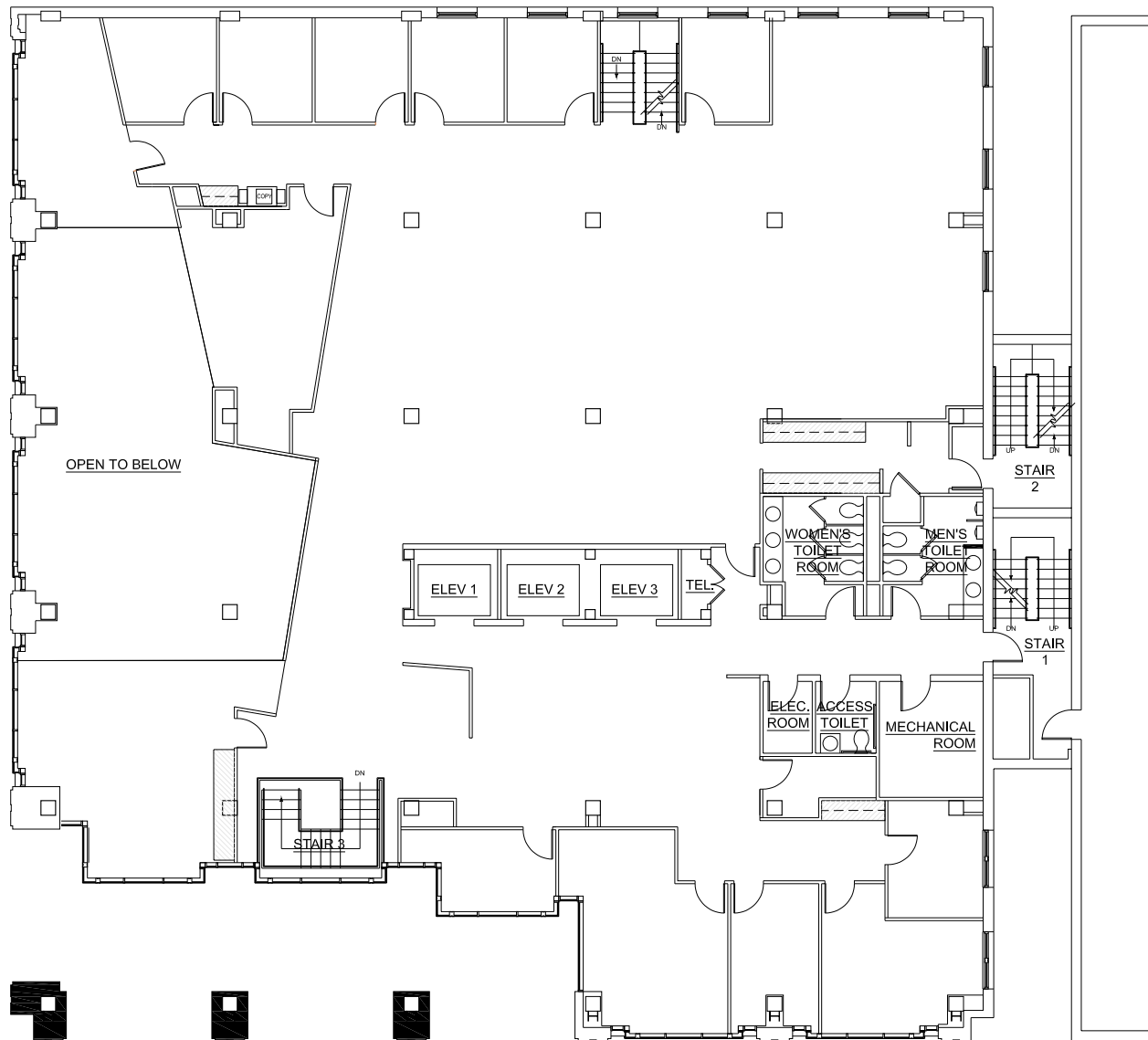
LINCOLN
PROPERTY
COMPANY

7735 Old Georgetown Road

Bethesda, Maryland 20814

Floor Plans

2nd Floor, Suite 200 - 8,145 SF



For Leasing Information: 301.304.8300

Paul (Rocky) Kern
301.304.8399
pkern@lpc.com

Tim Weitzel
301.304.8397
tweitzel@lpc.com

LINCOLN
PROPERTY
COMPANY