

SANTA BARBARA COUNTY & STA RITA HILLS AVA

PROPERTY VIDEO

<https://player.vimeo.com/video/764784146?h=5feba91b9e>

BIODYNAMIC[®] CERTIFIED ± 614-ACRE PROPERTY

OFFERING MEMORANDUM • 3145 E HWY 246 & 2755 PURISIMA RD • OFFERED AT \$14,900,000

Jon Ohlgren
805.689.7839
johnlgren@radiusgroup.com
CA LIC. 01464358



© 3/17/26 Radius Group Commercial Real Estate, Inc. DRE lic. 01334755. All rights reserved. Content and/or images may not be used without permission. The information provided here has been obtained from the owner of the property or from other sources deemed reliable. We have no reason to doubt its accuracy, but we do not guarantee it.



© 3/17/26 Radius Group Commercial Real Estate, Inc. DRE lic. 01334755. All rights reserved. Content and/or images may not be used without permission.
The information provided here has been obtained from the owner of the property or from other sources deemed reliable. We have no reason to doubt its accuracy, but we do not guarantee it.



RADIUS RANCH VINEYARD & AGRICULTURAL PROPERTIES | JON OHLGREN | 805.689.7839 | CA LIC 01464358 | RADIUSGROUP.COM





© 3/17/26 Radius Group Commercial Real Estate, Inc. DRE lic. 01334755. All rights reserved. Content and/or images may not be used without permission.
The information provided here has been obtained from the owner of the property or from other sources deemed reliable. We have no reason to doubt its accuracy, but we do not guarantee it.



PROPERTY VIDEO

<https://player.vimeo.com/video/764784146?h=5f6ba91b9e>

OFFERING SUMMARY

Offered at

\$14,900,000

Land Size

±614.12 Acres

\$/Acre

\$27,520/AC

PROPERTY OVERVIEW

This property comprises two adjoining parcels situated between La Purisima Golf Course and La Purisima Mission State Historic Park, providing access and frontage along Highway 246, as well as Purisima Rd. and Cebada Canyon Road.

2755 PURISIMA RD • LOMPOC CA • DUVARITA PARCEL • APN: 099-131-023 • ±100 ACRES

±28 acres or vineyard ready for replanting or change of use. Certified Biodynamic® just west of Sta. Rita Hills AVA.

- ±16 AC of Pinot Noir
- ±7 AC of Chardonnay
- ±4 AC of Syrah
- Less than 1 AC of Viognier
- 2 bedroom, 2.5 bath house remodeled in 2014 with ±1,800 SF
- Pole barn (60' x 30') built in 2013
- One (1) well ±450 gpm
- Zoned AG II-100 and not enrolled in Williamson Act

Approximately 10 additional acres are plantable.

3145 E HWY 246 • LOMPOC CA • CHRISTY & WISE PARCEL • APN: 099-131-022 • ±514.12 ACRES

±37 acres of vineyard planted in 2016, ±14 acres of vineyards planted in 2019 which are in Sta. Rita Hills AVA,

±45 acres of row crop, and ±300 additional plantable acres of vineyard potential.

- ±16 AC of Syrah
- ±5 AC of Pinot Noir
- ±16 AC of Grenache
- ±6 AC of Mourvèdre
- 2 bedroom, 1 bath house originally built in 1914 & completely remodeled in 2017 with ±950 SF
- Historic old barns
- Two (2) wells ±550 gpm & the other at ±650 gpm
- Zoned AG II-100 and not enrolled in Williamson Act

The vineyard also includes a couple acres each of Graciano, Chardonnay and Viognier.

AERIAL OVERVIEW

LA PURISIMA
MISSION STATE
HISTORIC PARK

099-131-023

099-131-022

LA PURISIMA
GOLF COURSE

GEBADA CANYON ROAD

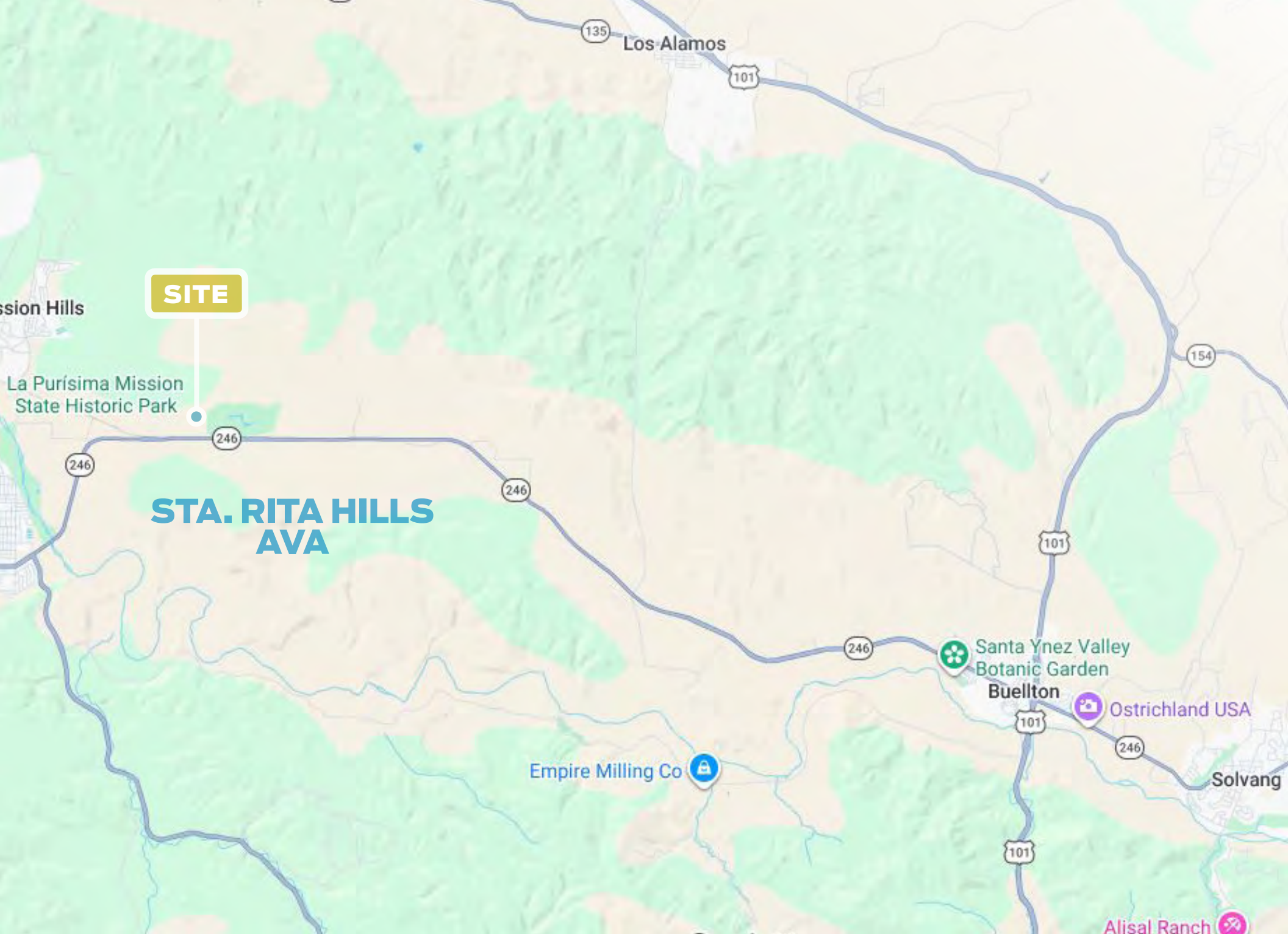
246

PURISIMA ROAD

PROPERTY VIDEO

<https://player.vimeo.com/video/764784146?h=5faba91b9e>

© 3/17/26 Radius Group Commercial Real Estate, Inc. DRE lic. 01334755. All rights reserved. Content and/or images may not be used without permission. The information provided here has been obtained from the owner of the property or from other sources deemed reliable. We have no reason to doubt its accuracy, but we do not guarantee it.



SITE

STA. RITA HILLS AVA



© 3/17/26 Radius Group Commercial Real Estate, Inc. DRE lic. 01334755. All rights reserved. Content and/or images may not be used without permission. The information provided here has been obtained from the owner of the property or from other sources deemed reliable. We have no reason to doubt its accuracy, but we do not guarantee it.





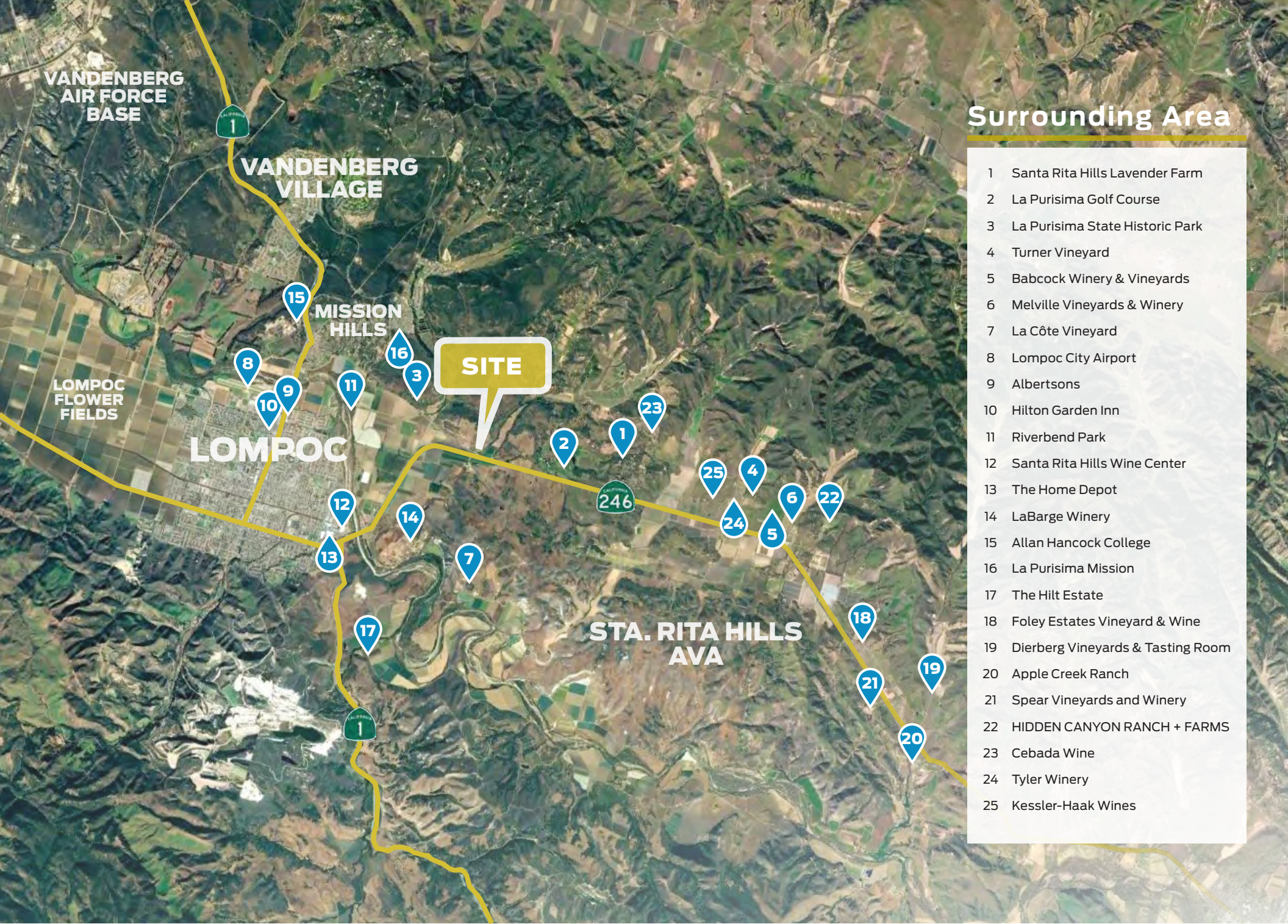


PROPERTY VIDEO

<https://player.vimeo.com/video/764784146?h=5f6ba91b9e>

© 3/17/26 Radius Group Commercial Real Estate, Inc. DRE lic. 01334755. All rights reserved. Content and/or images may not be used without permission. The information provided here has been obtained from the owner of the property or from other sources deemed reliable. We have no reason to doubt its accuracy, but we do not guarantee it.





Surrounding Area

- 1 Santa Rita Hills Lavender Farm
- 2 La Purisima Golf Course
- 3 La Purisima State Historic Park
- 4 Turner Vineyard
- 5 Babcock Winery & Vineyards
- 6 Melville Vineyards & Winery
- 7 La Côte Vineyard
- 8 Lompoc City Airport
- 9 Albertsons
- 10 Hilton Garden Inn
- 11 Riverbend Park
- 12 Santa Rita Hills Wine Center
- 13 The Home Depot
- 14 LaBarge Winery
- 15 Allan Hancock College
- 16 La Purisima Mission
- 17 The Hilt Estate
- 18 Foley Estates Vineyard & Wine
- 19 Dierberg Vineyards & Tasting Room
- 20 Apple Creek Ranch
- 21 Spear Vineyards and Winery
- 22 HIDDEN CANYON RANCH + FARMS
- 23 Cebada Wine
- 24 Tyler Winery
- 25 Kessler-Haak Wines



CITY OF ARTS & FLOWERS

LOMPOC • GATEWAY TO THE STA. RITA HILLS AVA

Wine production and wine tourism comprise the rapidly expanding value-added agricultural sector of the Lompoc economy. The Lompoc Valley is considered the “Gateway to the Sta. Rita Hills AVA”, internationally recognized for premium pinot noir and chardonnay.

Thirty premium boutique wine labels are produced in Lompoc at wineries in the affectionately termed “Lompoc Wine Ghetto”—a unique two-block industrial park located off of North Seventh Street on Chestnut Court—and at other locations across town. The complex offers world-class wine, presented in a laid back atmosphere, where, quite often, the person pouring the wine is also the person that made it.

Several other wineries are located along California State Route 246, linking Lompoc with Buellton, and on Santa Rosa Road. Lompoc hosts the Santa Barbara County Vintners’ Festival held at River Park in the spring, and enjoys world-wide acclaim as the “City of Arts and Flowers.” The flower seed capital is awash in colorful blooms throughout the warmer months and is home to more than 30 murals, mostly concentrated in Old Town.

Located on scenic Pacific Coast Highway, Lompoc is approximately 55 miles northwest of Santa Barbara, 155 miles northwest of Los Angeles and 270 miles southeast of San Francisco. The Pacific Ocean is roughly nine miles from town. The Lompoc Valley is a key part of the Central California region with a population of approximately 44,398. Vandenberg Air Force Base — a major regional employer — is 10 miles northwest of the City and is among the nation’s most important military and aerospace installations.

STA. RITA HILLS AVA

OFFICIAL AVA OF SANTA BARBARA COUNTY

The following information is made courtesy of The Santa Barbara Vintners Association:

Sta. Rita Hills is a sub-AVA of the greater Santa Ynez Valley appellation, located in the cooler climate area to the west. Its proximity to the Pacific Ocean results in fog-laden mornings followed by mid-morning sunshine. Almost like clockwork, ocean breezes pick up again in the early afternoon, moderating daily temperatures. This maritime influence combined with sedimentary soils with patches of diatomaceous earth and limestone provide an ideal place to grow the appellation's hallmark Chardonnay and Pinot Noir.

One of the smaller AVAs in California, the eastern edge of Sta. Rita Hills is about four miles west of Highway 101 in Buellton and continues to the western boundary, about two miles east of Highway 1 in Lompoc. The Sta. Rita Hills AVA is home to over 59 vineyards, totaling 2,700 hundred acres planted to Pinot Noir, Chardonnay and 18 other cool climate wine grape varieties.

On the west edges of the Santa. Rita Hills, there is a cluster of tasting rooms located on the Lompoc Wine Trail. Many of the Sta. Rita Hills winemakers make their wine and have tasting rooms here.

[*Click here for more about the Sta. Rita Hills A.V.A. & The Santa Barbara Vintners Association.*](#)



PROPERTY VIDEO

<https://player.vimeo.com/video/764784146?h=5feba91b9e>

2755 PURISIMA RD

LOMPOC CALIFORNIA 93436

OFFERING MEMORANDUM
PRESENTED BY

JON OHLGREN

805.689.7839

joblgren@radiusgroup.com

CA Lic. 01464358



226 E. DE LA GUERRA ST. SUITE 100
SANTA BARBARA CA 93101
805.965.5500
RADIUSGROUP.COM