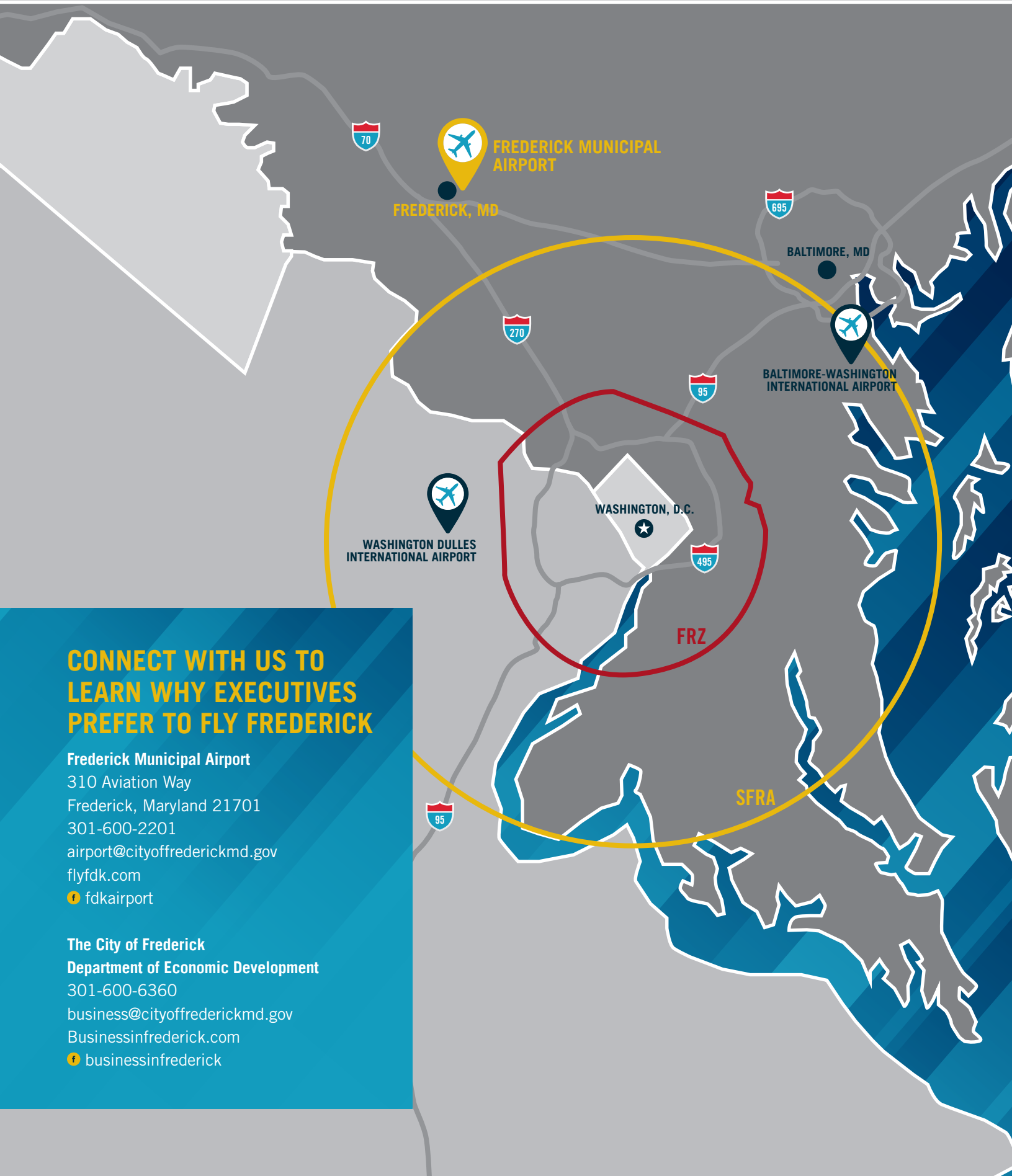


FREDERICK MUNICIPAL AIRPORT



CONNECT WITH US TO LEARN WHY EXECUTIVES PREFER TO FLY FREDERICK

Frederick Municipal Airport
310 Aviation Way
Frederick, Maryland 21701
301-600-2201
airport@cityoffrederickmd.gov
flyfdk.com
fdkairport

The City of Frederick
Department of Economic Development
301-600-6360
business@cityoffrederickmd.gov
Businessinfrederick.com
businessinfrederick



THE PREFERRED EXECUTIVE AIRPORT OF THE NATIONAL CAPITAL REGION



Frederick Municipal Airport (FDK) is the preferred executive airport in the National Capital Region with more than 90,000 aircraft operations annually.

STRATEGIC LOCATION

Based in Maryland's second largest city, FDK offers quick and easy access to major global markets. The airport lies conveniently outside of the DC Special Flight Rules, and at the cross-section of interstates that connect to both Washington D.C. & Baltimore.

- » Minutes from I-270, I-70, & Frederick's award-winning downtown
- » Less than an hour from Washington D.C. and Baltimore
- » No SFRA Flight Plan Required
- » No landing fees

AIRFIELD OVERVIEW

- » Control Tower & Class "D" Airspace
- » Instrument Approach Capability (ILS, GPS, VOR)
- » 5,820' Runway

WORLD-CLASS SERVICE

- » Signature Flight Support Fixed Base Operator
- » Three flight schools
- » Fixed wing and rotorcraft maintenance
- » Charter service and car rentals
- » Full service restaurant, pilots lounge, meeting space, and crew rest areas

HEADQUARTERS OF AOPA

The Aircraft Owners and Pilots Association—the world's most influential general aviation organization—is based at Frederick Municipal Airport.



BUILD-TO-SUIT DEVELOPMENT OPPORTUNITIES

Frederick Municipal Airport has multiple development sites served with key utility infrastructure available at competitive rates and flexible lease terms. These parcels fall within a federally-designated **Opportunity Zone** – offering significant tax incentive potential to eligible investors.

NORTH EAST HANGAR DEVELOPMENT

Future hangar project utilizing ~620,000 SF of raw land to construct ~200,000 SF of finished aircraft storage hangars

STANDALONE HANGAR

Immediate opportunity for 10,000 SF private hangar

SOUTH END MULTI-HANGAR COMPLEX

Future South End apron is 315,000 SF to support 80,000 SF of new hangars and will accommodate flexible combinations of standalone hangars from 4,000 SF to 20,000 SF