



SOUTH PARK GROUP

www.southparkgroup.com



FOR LEASE

CREATIVE OFFICE

8322 Beverly Boulevard, Suite 300
Los Angeles, California 90048

Concrete floors with exposed red brick walls. Beautiful courtyard patio on the 3rd floor. Great natural light & views over Beverly Blvd. Centrally located between La Cienega & Crescent Heights close to Blue Bottle Coffee, Kings Road, BH Juice Club, Joan's on Third, Toast, Izakaya & many other shops and eateries.

JACK RAVAN

Tel. 323.782.1270

E. jackravan@southparkgroup.com

No. 00890189

AVAILABLE SPACE

Size: Approximately 2,900 rentable sqft

Rate: \$3.75 per sqft, Modified Gross

Parking: Available at \$150 per space

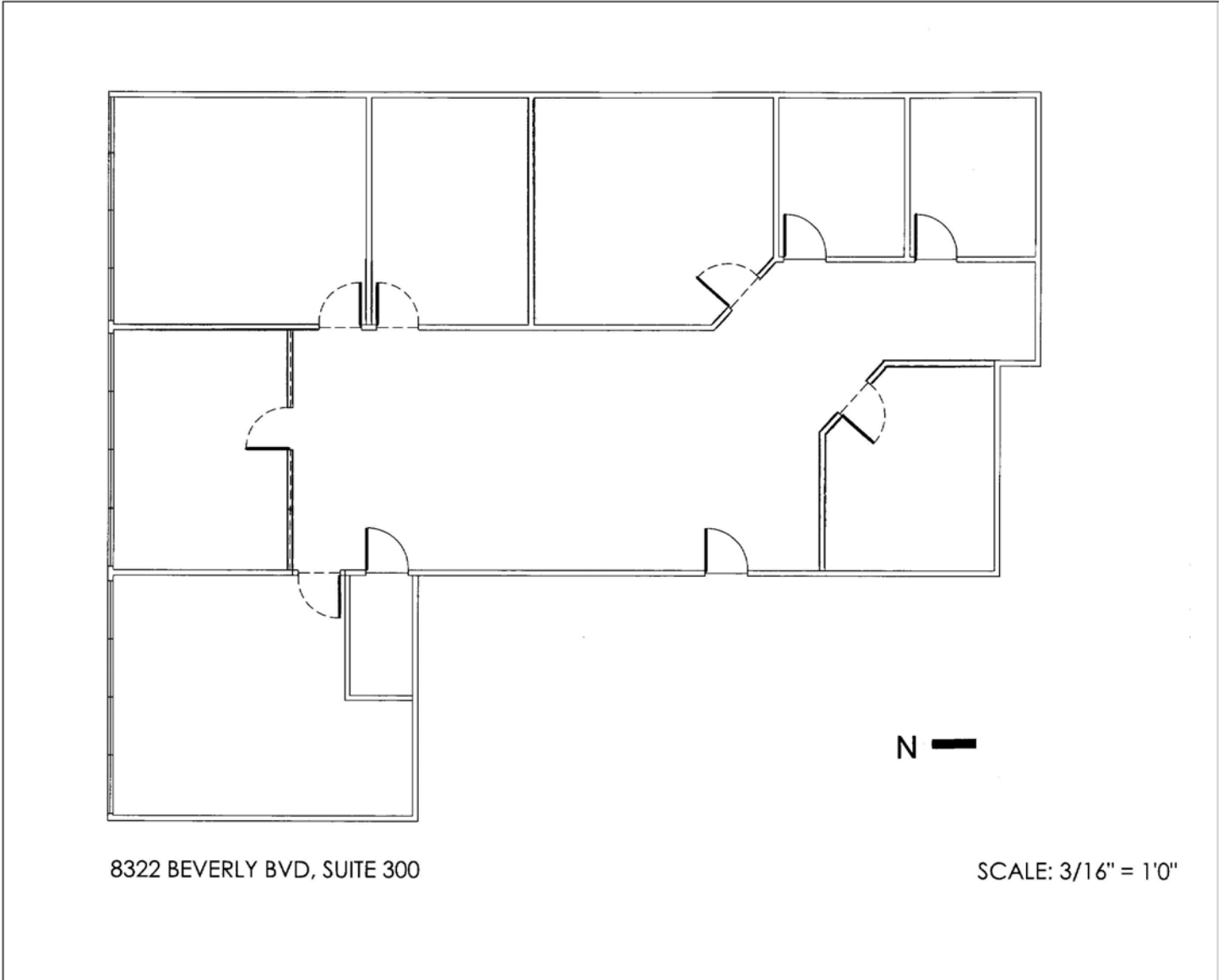
SOUTH PARK GROUP | 8322 Beverly Blvd., Suite 301 | Los Angeles, CA 90048

This information has been furnished by sources that we deem reliable, but for which we assume no liability. The information contained herein is given, in confidence, with the understanding that all negotiations pertaining to this property be handled through the submitting office. All measurements are approximate.



FLOOR PLAN

8322 Beverly Blvd., Suite 300, Los Angeles, California 90048



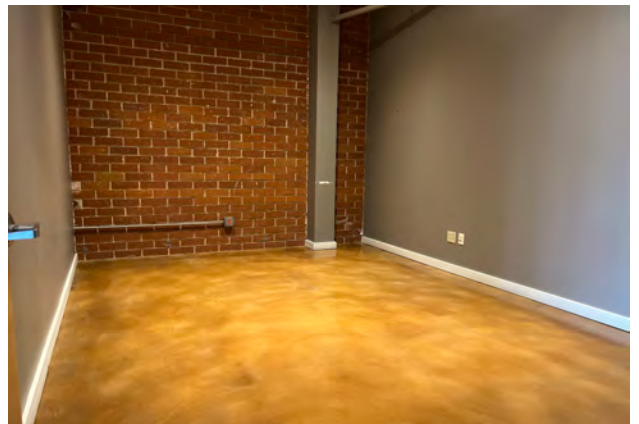
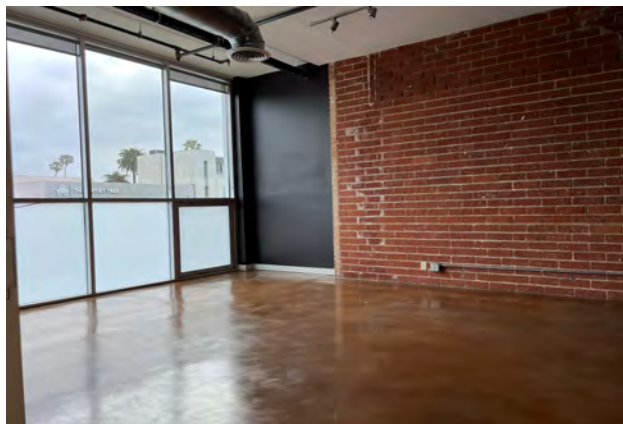
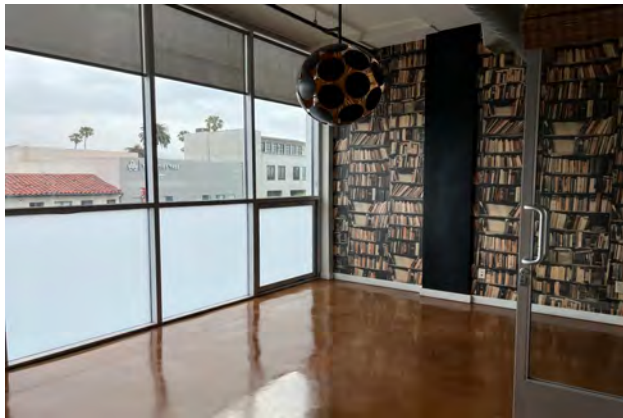


SOUTH PARK GROUP

www.southparkgroup.com

INTERIOR

8322 Beverly Blvd., Suite 300, Los Angeles, California 90048



SOUTH PARK GROUP | 8322 Beverly Blvd., Suite 301 | Los Angeles, CA 90048

This information has been furnished by sources that we deem reliable, but for which we assume no liability. The information contained herein is given, in confidence, with the understanding that all negotiations pertaining to this property be handled through the submitting office. All measurements are approximate.

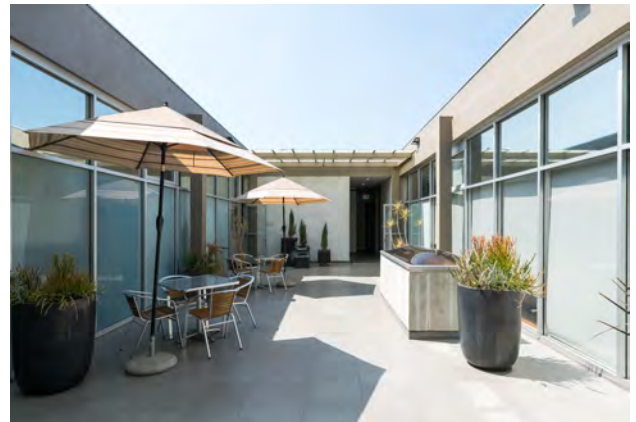
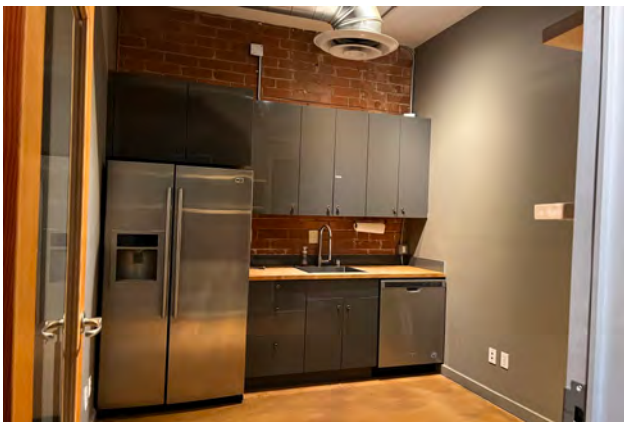


SOUTH PARK GROUP

www.southparkgroup.com

INTERIOR

8322 Beverly Blvd., Suite 300, Los Angeles, California 90048



SOUTH PARK GROUP | 8322 Beverly Blvd., Suite 301 | Los Angeles, CA 90048

This information has been furnished by sources that we deem reliable, but for which we assume no liability. The information contained herein is given, in confidence, with the understanding that all negotiations pertaining to this property be handled through the submitting office. All measurements are approximate.