

LAKE MEAD MEDICAL BUILDING

1815 E. LAKE MEAD BOULEVARD, NORTH LAS VEGAS, NV 89030

NORTH VISTA HOSPITAL
ON CAMPUS MOB
FOR LEASE



TONYA GOTTESMAN

Vice President
Lic. S.0189043
T +1 702 369 4882
C +1 310 612 3592
tonya.gottesman@cbre.com

**RYAN MARTIN, SIOR,
CCIM**

Senior Vice President
Lic. BS 0048284
T +1 702 369 4881
C +1 702 630 2671
ryan.martin@cbre.com

MICHAEL K. HSU

First Vice President
Lic. S.51609.LLC
T +1 702 369 4866
C +1 702 768 6459
michael.hsu@cbre.com

CBRE

2

Property Highlights

The Lake Mead Medical Building is a three-story medical office building situated directly on the North Vista Hospital Campus.

- The only on-campus medical office building in North Las Vegas
- Available suites from 1,024 RSF to 5,078 RSF
- Options for immediate occupancy or the landlord can assist in constructing custom tenant improvements.
- Near numerous dining, retail and business services amenities
- Immediate access to I-15 & US-95



LEASE RATE

\$1.85 NNN | \$1.15 NNNs



SQUARE FEET

±1,024 – ±5,087 RSF

SUITE #	RSF	DESCRIPTION
Suite 100	±4,120 RSF	2nd Gen Medical Suite
Suite 110	±4,282 RSF	2nd Gen Medical Suite
Suite 203	±1,548 RSF	2nd Gen Medical Suite
Suite 207	±1,024 RSF	2nd Gen Medical Suite
Suite 314	±2,872 RSF	2nd Gen Medical Suite
Suite 317	±2,215 RSF	2nd Gen Medical Suite
Suite 314/317	±5,087 RSF	2nd Gen Medical Suite

360° VIRTUAL TOUR

360° VIRTUAL TOUR

360° VIRTUAL TOUR

360° VIRTUAL TOUR

360° VIRTUAL TOUR

360° VIRTUAL TOUR



MULTI-TENANT MEDICAL OFFICE BUILDING

1815 E. LAKE MEAD BOULEVARD, NORTH LAS VEGAS, NV

CBRE

3

Property Overview



PROPERTY NAME

Lake Mead Medical Building
(built in 2000)



IDEAL USE

Medical



BUILDING SIZE

±43,921 RSF



OF FLOORS

3



ZONING

Redevelopment Area/
Downtown Core (R-A DC)



ASKING RATE

\$1.85 NNN | \$1.15 NNNs



PARKING RATIO

4/1,000



SIGNAGE

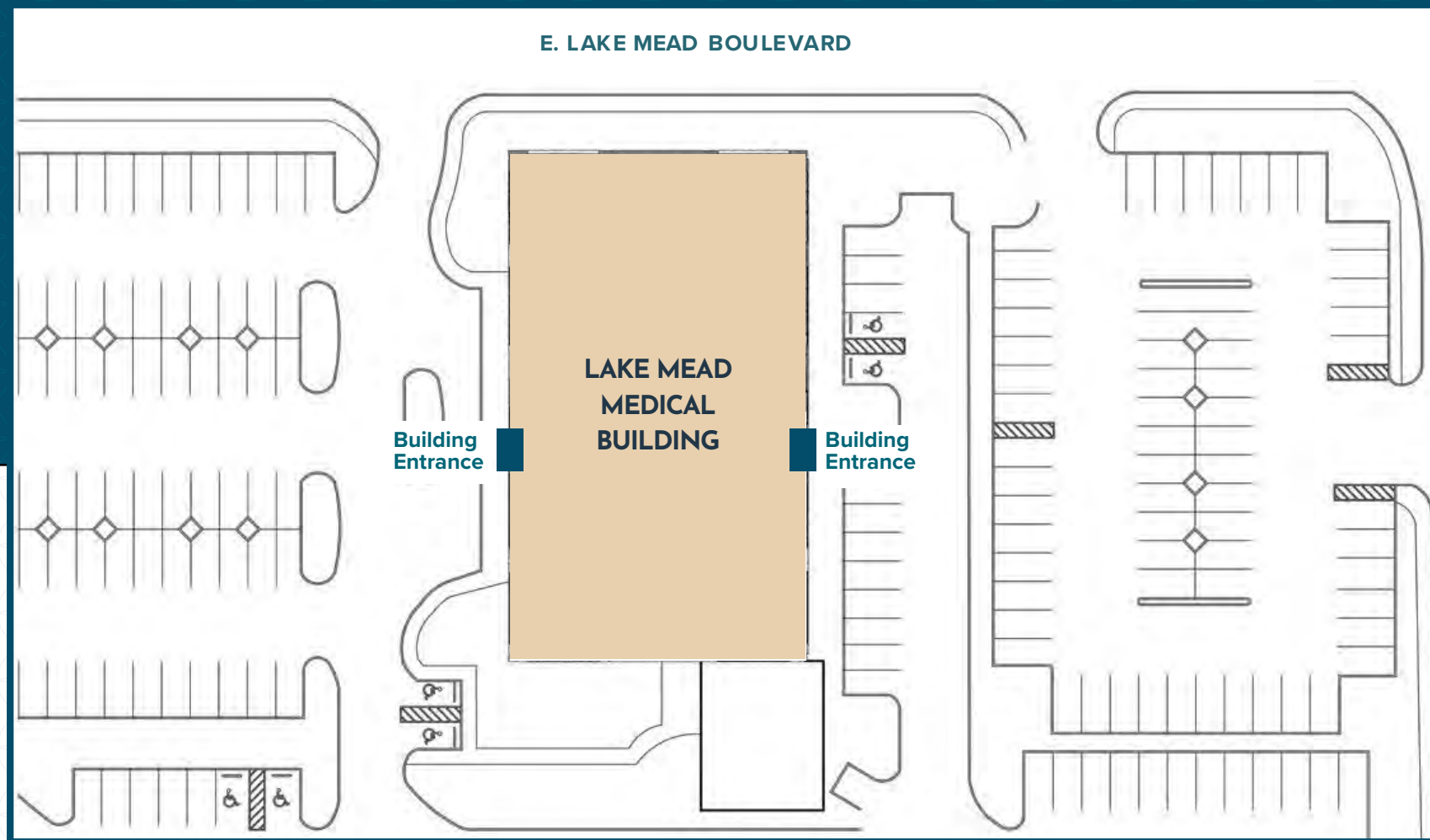
Building signage provides
prominent visibility

1815 E. LAKE MEAD BOULEVARD, NORTH LAS VEGAS, NV

CBRE

4

Site Plan



PROPERTY HIGHLIGHTS

- Offering turn-key tenant improvements at the North Vista on-campus MOB.
- Medical and Admin Space ranging from $\pm 1,548$ RSF to $\pm 5,087$ RSF.
- Conveniently located with easy access to both I-15 and US-95 freeways.

5

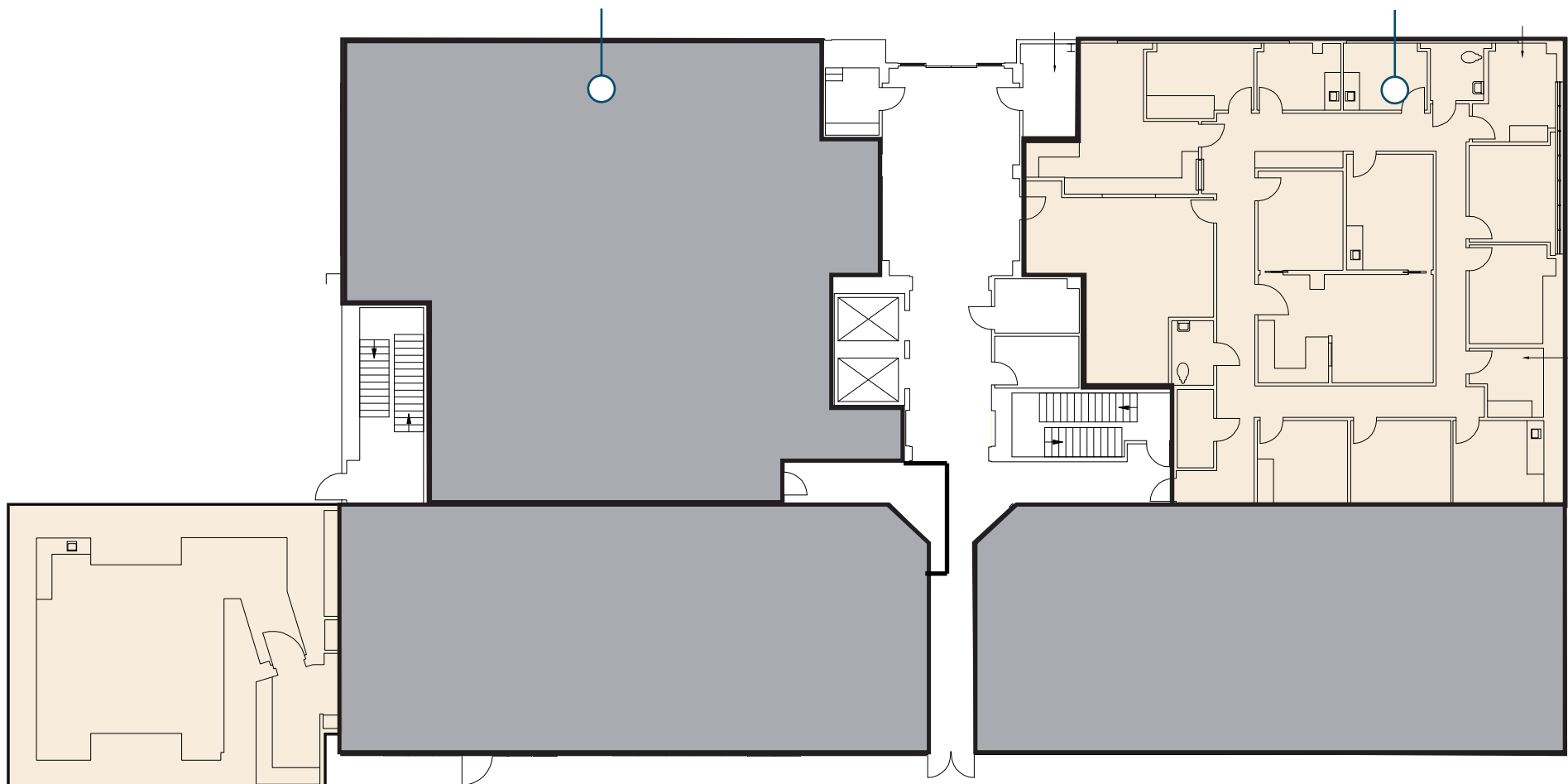
1st Floor

360° VIRTUAL TOUR

AVAILABLE
SUITE 100
±4,120 RSF

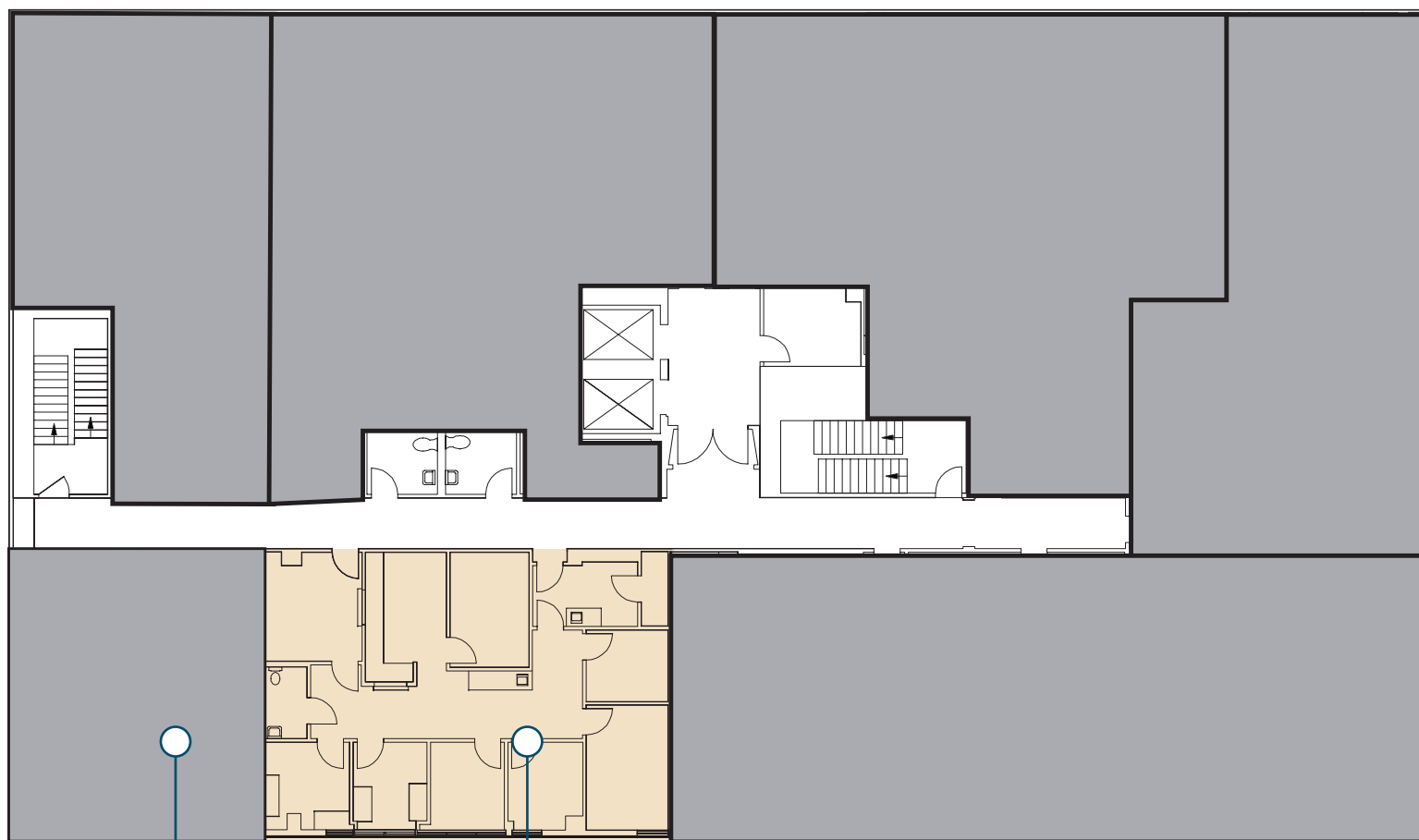
360° VIRTUAL TOUR

AVAILABLE
SUITE 110
±4,282 RSF



6

2nd Floor



360° VIRTUAL TOUR

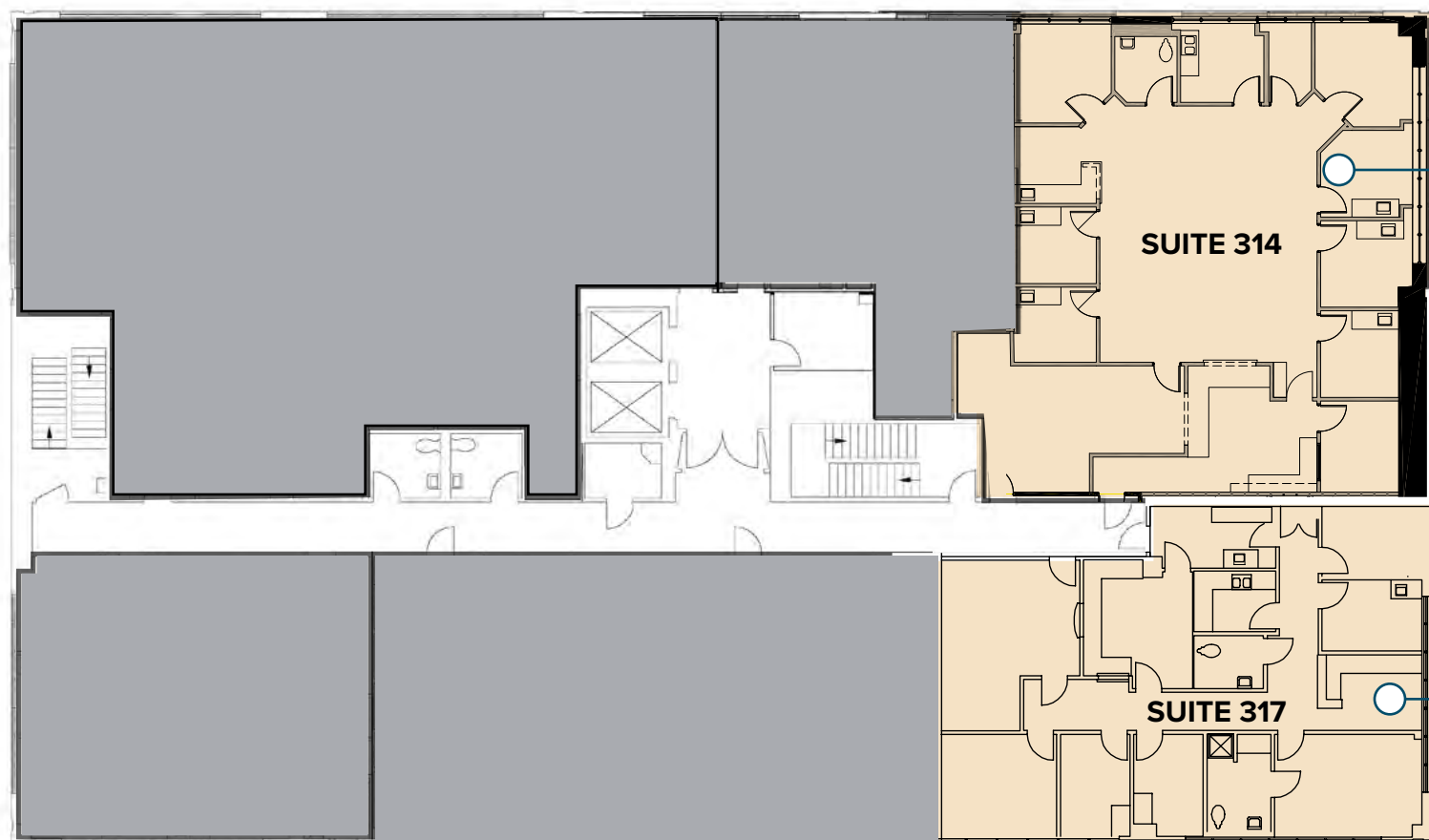
**AVAILABLE
SUITE 207**
±1,024RSF

**AVAILABLE
SUITE 203**
±1,548 RSF

360° VIRTUAL TOUR

7

3rd Floor



**AVAILABLE
SUITE 314**
±2,872 RSF

**360° VIRTUAL
TOUR**

**AVAILABLE
SUITE 317**
±2,215 RSF

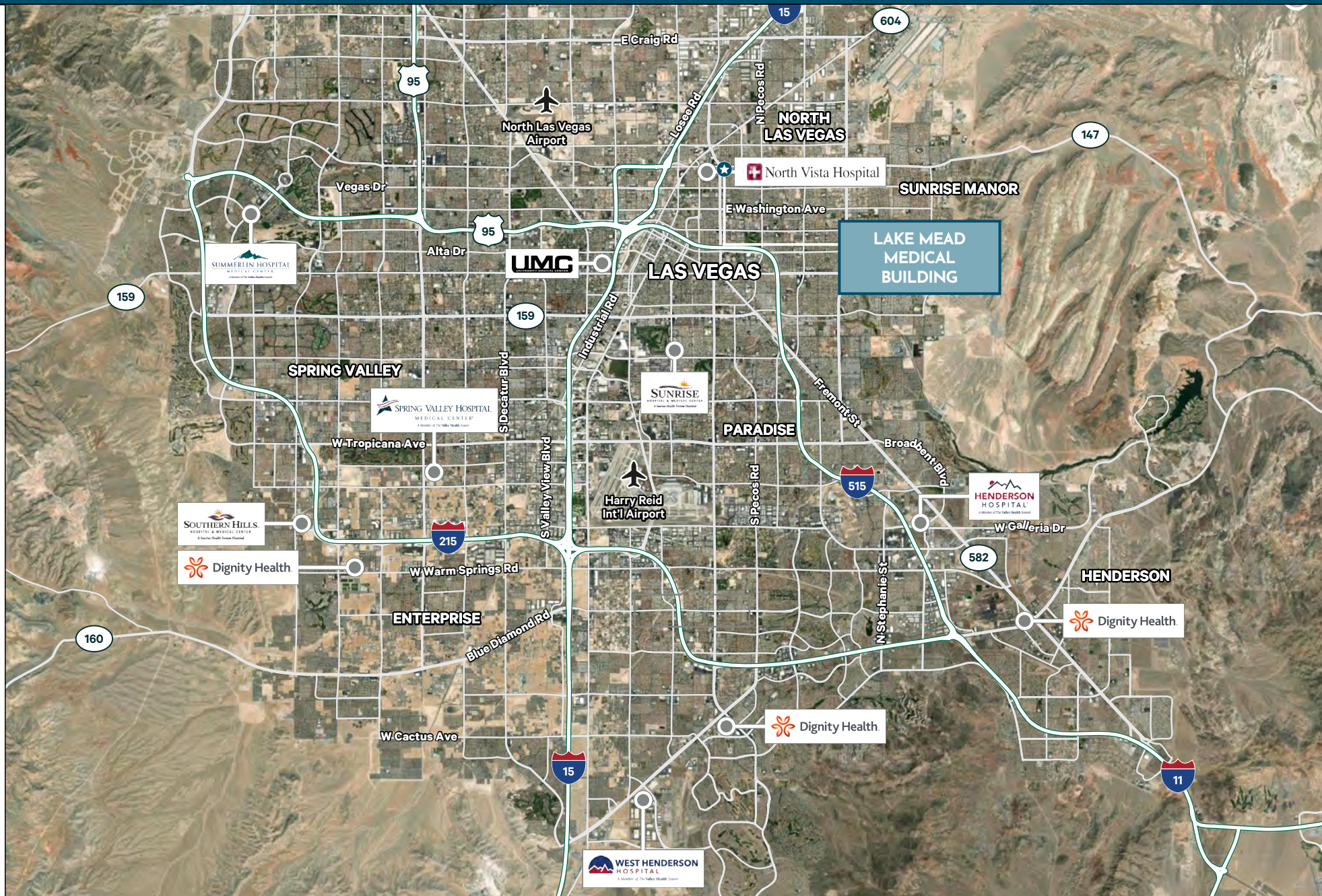
**360° VIRTUAL
TOUR**

SUITE 314 & 317 CAN BE COMBINED FOR ± 5,087 RSF





Hospital Map



Area Demographics

	1 Mile	3 Miles	5 Miles
POPULATION			
2025 Population - Current Year Estimate	30,661	199,491	504,849
2030 Population - Five Year Projection	31,419	205,039	521,813
2020-2025 Annual Population Growth Rate	-0.54%	0.03%	0.44%
2025 Median Age	29.00	31.20	33.30
HOUSEHOLDS			
2025 Households - Current Year Estimate	8,467	66,711	172,605
2020-2025 Annual Household Growth Rate	0.38%	0.70%	0.88%
HOUSEHOLD INCOME			
2025 Average Household Income	\$60,004	\$63,711	\$76,658
2030 Average Household Income	\$67,988	\$71,626	\$86,335
2025 Median Household Income	\$47,093	\$47,784	\$58,318
2030 Median Household Income	\$55,623	\$56,371	\$67,040
DAYTIME POPULATION			
2025 Daytime Population	27,847	240,273	537,282



Healthcare Expenditures

(5 Mile Radius)

\$741M

Total Annual
Healthcare

\$138M

Total Annual
Medical Services

\$47M

Total Annual
Dental Care

\$9.2M

Total Annual
Eye Care

\$7.8M

Total Annual
Lab Test

\$27M

Total Annual
Physician Services

The medical services in Las Vegas, NV offer a wide range of healthcare options. Services include primary care physicians, specialists, urgent care centers, hospitals, and medical clinics. Las Vegas is home to several renowned hospitals and medical centers. With a diverse healthcare landscape, Las Vegas ensures access to quality medical services for its population.



11 Lake Mead Medical Building



LAKE MEAD MEDICAL BUILDING

1815 E. LAKE MEAD BOULEVARD, NORTH LAS VEGAS, NV 89030

FOR LEASE
MEDICAL/OFFICE BUILDING

**360°
VIRTUAL
TOUR**

CONTACT

TONYA GOTTESMAN
Vice President
Lic. S.0189043
T +1 702 369 4882
C +1 310 612 3592
tonya.gottesman@cbre.com

**RYAN MARTIN, SIOR,
CCIM**
Senior Vice President
Lic. BS 0048284
T +1 702 369 4881
C +1 702 630 2671
ryan.martin@cbre.com

MICHAEL K. HSU
First Vice President
Lic. S.51609.LLC
T +1 702 369 4866
C +1 702 768 6459
michael.hsu@cbre.com

© 2026 CBRE, Inc. All rights reserved. This information has been obtained from sources believed reliable, but has not been verified for accuracy or completeness. You should conduct a careful, independent investigation of the property and verify all information. Any reliance on this information is solely at your own risk. CBRE and the CBRE logo are service marks of CBRE, Inc. All other marks displayed on this document are the property of their respective owners, and the use of such logos does not imply any affiliation with or endorsement of CBRE. Photos herein are the property of their respective owners. Use of these images without the express written consent of the owner is prohibited. Some content was originally generated by GenAI and modified by the author.

CBRE