



EDWARDS CENTER

14400 S John Humphrey Drive, Orland Park, IL 60462

OWNED & MANAGED BY

EDWARDS

REALTY COMPANY

CONTACT

LEASING TEAM

Aaron Gadiel

Edwards Realty Company

Office: (708) 923-6312

Cell: (847) 561-7224

aaron@edwardsrealtyco.com

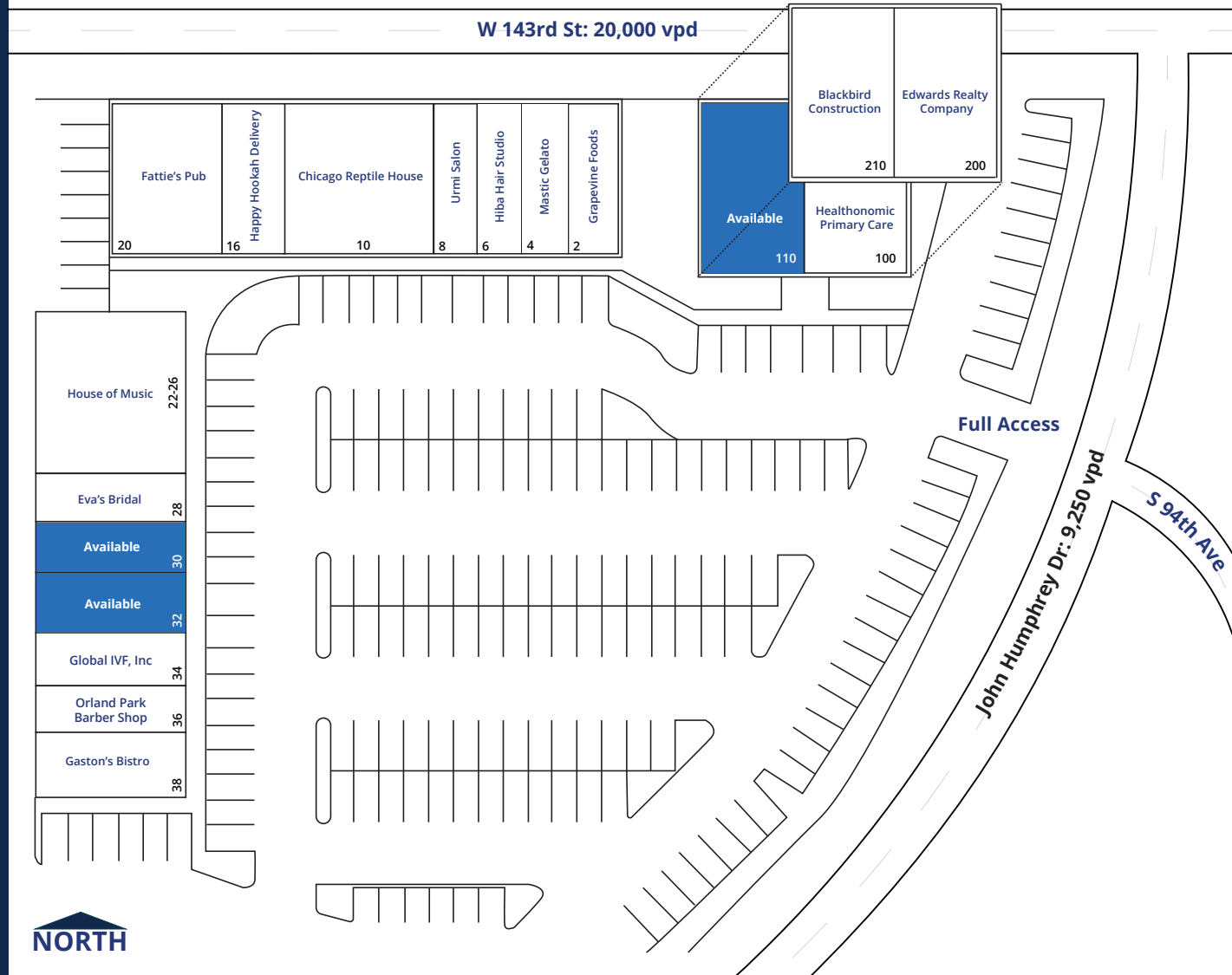
EDWARDS
REALTY COMPANY



SITE MAP

TENANTS

Suite	Tenant	SF
100	Healthonomic Primary Care	3,100
110	Available	3,100
200	Edwards Realty Company	3,100
210	Blackbird Construction	3,100
2	Grapevine Foods	1,280
4	Mastic Gelato	1,280
6	Hiba Hair Studio	1,280
8	Urmi Salon	1,280
10	Chicago Reptile House	3,840
16	Happy Hookah Delivery	1,280
20	Fattie's Pub	3,200
22-26	House of Music	3,360
28	Eva's Bridal	1,800
30	Available	1,280
32	Available	1,160
34	Global IVF, Inc	1,500
36	Orland Park Barber Shop	880
38	Gaston's Bistro	2,320

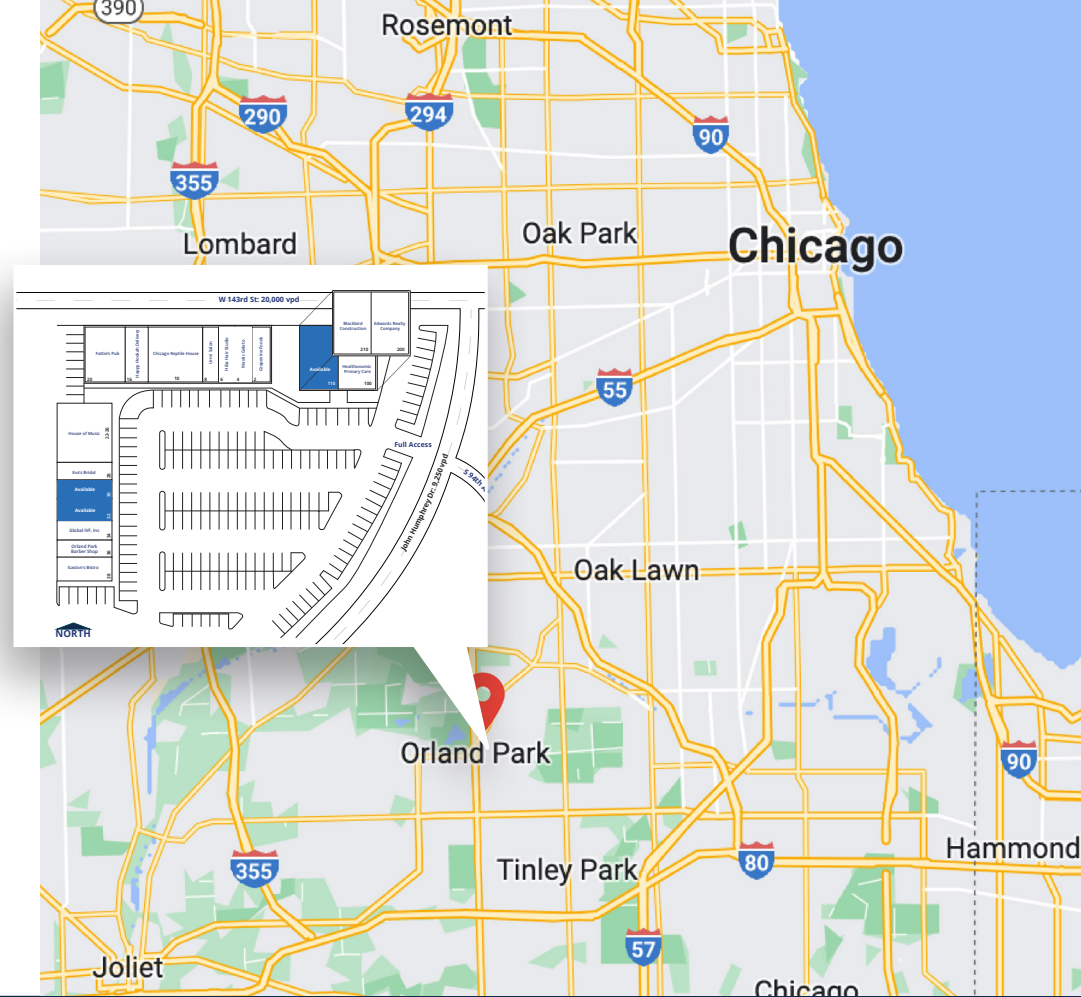


ORLAND PARK

AN EXCEPTIONAL LOCATION

Boasting access to key regional arteries I-294, I-55, and I-57, as well as S. LaGrange Road, Edwards Center is ideally situated and easily accessed by the affluent area patrons.

A short, 38-minute drive to Downtown Chicago, 30-minutes to Chicago Midway International Airport and 45-minutes to O'Hare International Airport, Edwards Center offers easy access to important regional hubs.



“Safest City in Illinois”
safety.com, 2021



“American City for Home Ownership”
24/7 Wall Street, 2019



“Best Small Cities in Illinois”
Money Magazine, 2008

264K

Annual Visits
placer.ai

75%

Local Shoppers of the Property
Customers who live within 10 miles of the property, placer.ai