



# CLARKSON MEDICAL & DENTAL CENTERS

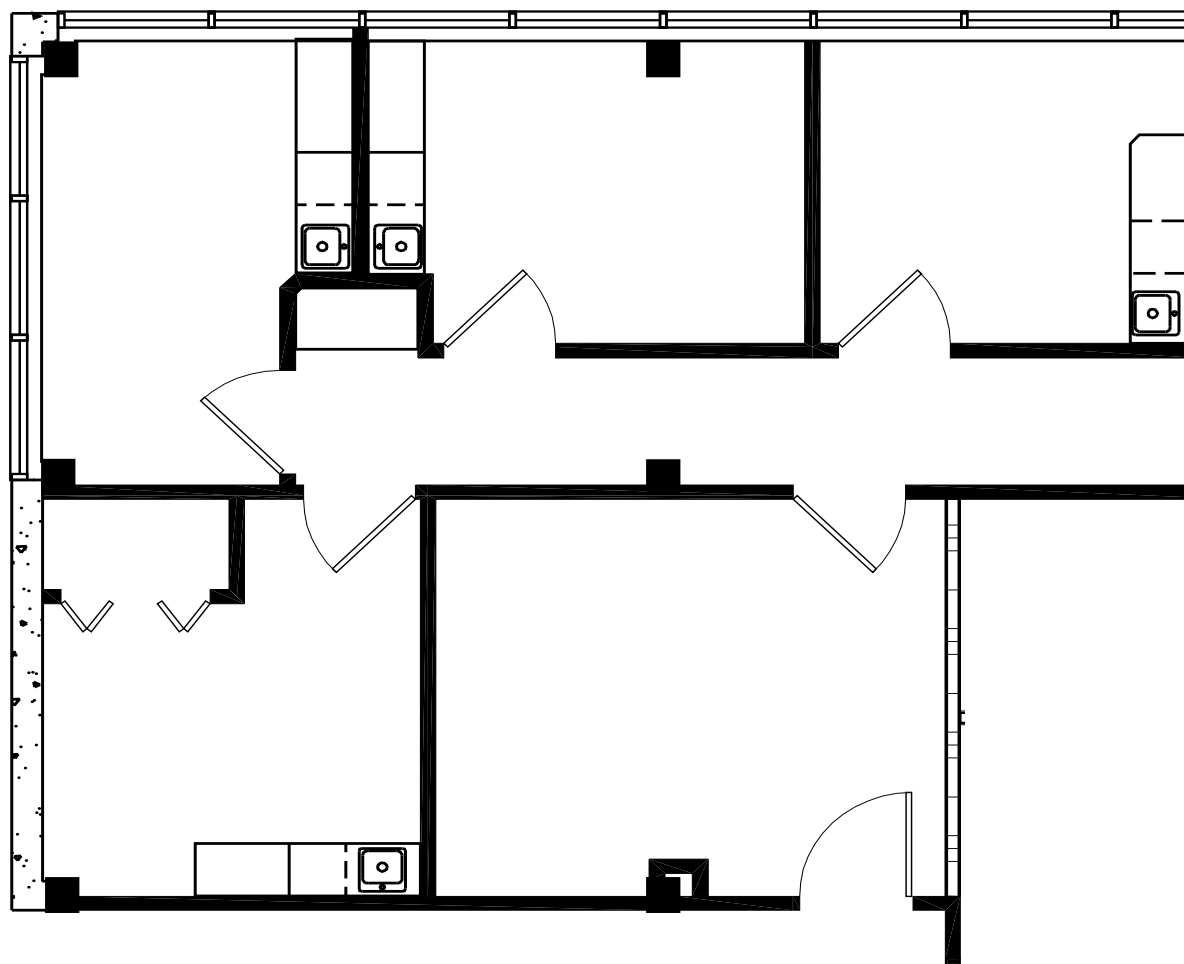
3601 & 3701 S. CLARKSON STREET, ENGLEWOOD, CO 80113

SUITE 130

924 SQFT

## SUITE 130

- 1<sup>ST</sup> FLOOR OF THE 3601 BUILDING
- FULL BUILD OUT, RECONFIGURATIONS AVAILABLE
- 4 EXAM ROOMS AND WAITING AREA
- 6: 1,000 PARKING RATIO
- RESERVED PARKING SPOTS AVAILABLE
- FEATURES LOTS OF NATURAL LIGHT
- ONSITE PROPERTY MANAGEMENT
- NEW BUILDING OWNERSHIP AND MANAGEMENT



FOR MORE INFORMATION PLEASE CALL

303-781-9930