

790 MADISON AVENUE

Southwest Corner of Madison Avenue and East 67th Street

FIFTH FLOOR CORNER GALLERY/OFFICE SPACE FOR LEASE



- Rare Office Opportunity on Madison Avenue
- Entrance on Madison Avenue
- Full Service office building with Full-Time Guard/Doorman
- Dry use only—No Medical
- Excellent for Showroom, Fashion, Gallery, or General Offices
- Windows facing Madison Avenue and 67th Street

ASKING RENT:

\$8,000 Per Month

Exclusively represented by:

THE **DANA** COMMERCIAL TEAM

AT DOUGLAS ELLIMAN REAL ESTATE

GARY **DANA** 212.692.6183

gdana@elliman.com

RICK **DANA** 212.692.6182

rdana@elliman.com

CHRIS **DANA** 212.455.4721

cdana@elliman.com

SIZE

Suite 506: 1000 square feet

TERM

Short Term or Long Term

POSSESSION

Feb 2021

TENANT

Everblock

ELECTRIC

\$260 per mo.

DOORMAN

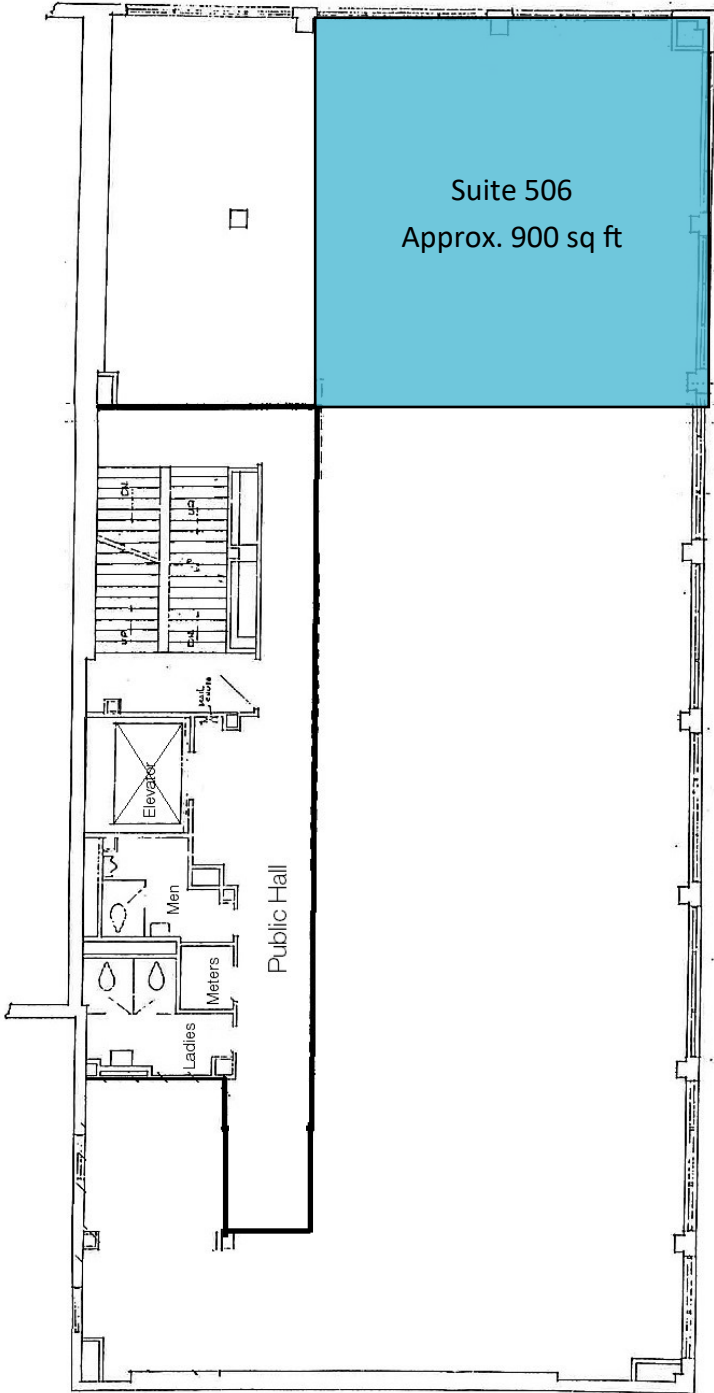
\$100 per mo.

EXPOSURE

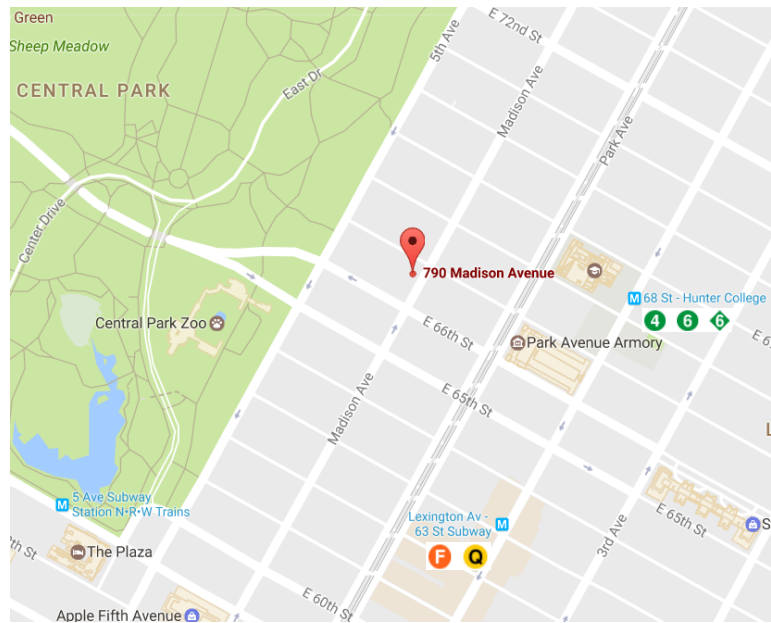
5th Floor Window

790 Madison Avenue

East 67th Street



—Madison Avenue—



THE DANA COMMERCIAL TEAM

AT DOUGLAS ELLIMAN REAL ESTATE

GARY DANA	212.692.6183	gdana@elliman.com
RICK DANA	212.692.6182	rdana@elliman.com
CHRIS DANA	212.455.4721	cdana@elliman.com



THE DANA COMMERCIAL TEAM
Douglas Elliman
 REAL ESTATE

© 2017 DOUGLAS ELLIMAN REAL ESTATE. ALL MATERIAL PRESENTED HEREIN IS INTENDED FOR INFORMATION PURPOSES ONLY. WHILE THIS INFORMATION IS BELIEVED TO BE CORRECT, IT IS REPRESENTED SUBJECT TO ERRORS, OMISSIONS, CHANGES OR WITHDRAWAL WITHOUT NOTICE. ALL PROPERTY INFORMATION, INCLUDING, BUT NOT LIMITED TO SQUARE FOOTAGE, ROOM COUNT, NUMBER OF BEDROOMS AND THE SCHOOL DISTRICT IN PROPERTY LISTINGS SHOULD BE VERIFIED BY YOUR OWN ATTORNEY, ARCHITECT OR ZONING EXPERT. IF YOUR PROPERTY IS CURRENTLY LISTED WITH ANOTHER REAL ESTATE BROKER, PLEASE DISREGARD THIS OFFER. IT IS NOT OUR INTENTION TO SOLICIT THE OFFERINGS OF OTHER REAL ESTATE BROKERS. WE COOPERATE WITH THEM FULLY. EQUAL HOUSING OPPORTUNITY.