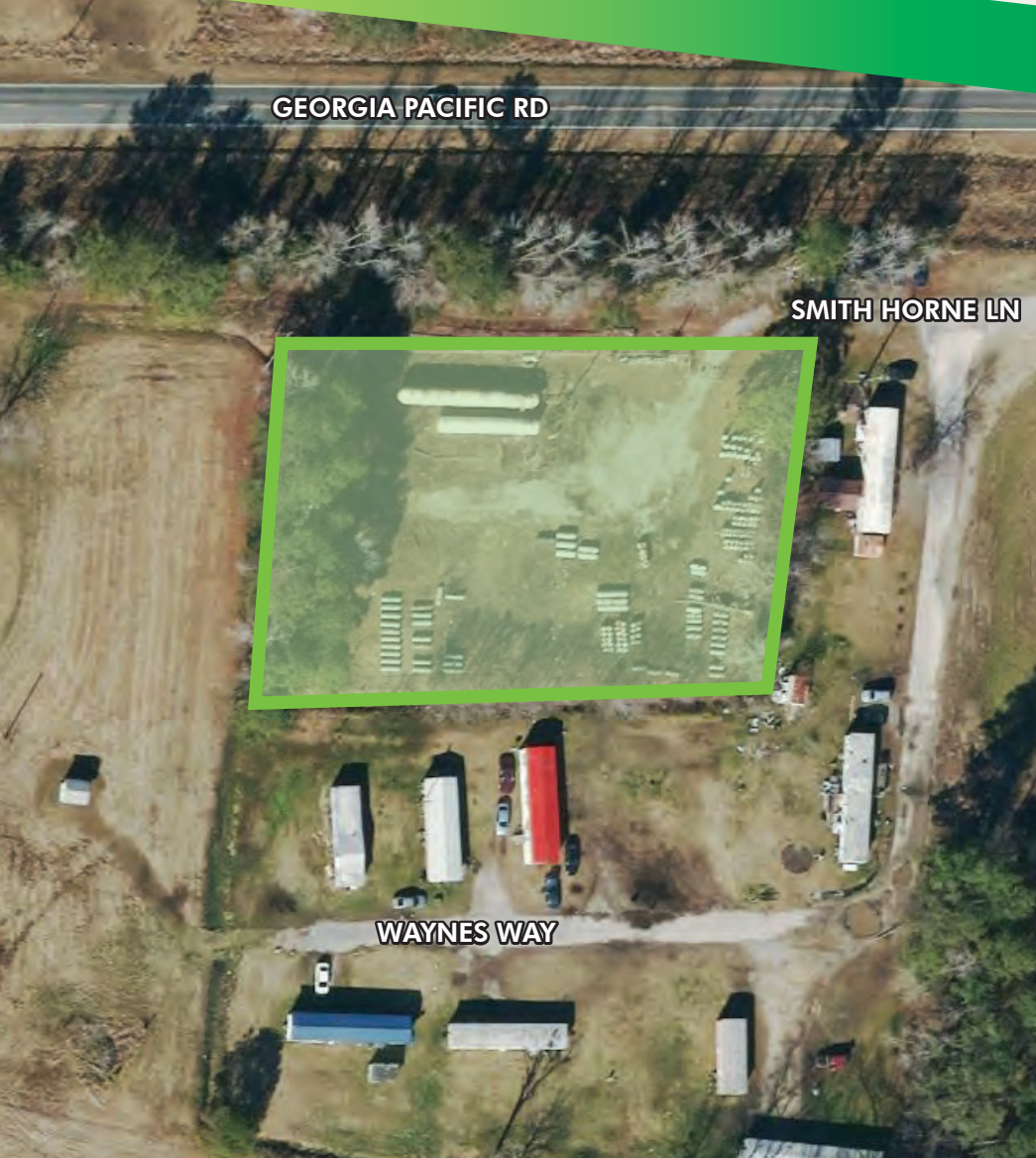


FOR SALE

89 SMITH HORNE LANE

Whiteville, NC 28472



GEORGIA PACIFIC RD

SMITH HORNE LN

WAYNES WAY

PROPERTY OVERVIEW

- + Parcel Size: 1.0 Acre
- + Parcel ID #: 0270.00-78-2262.000
- + County: Columbus County
- + Zoning: General Use (GU)
- + Tax Value: \$5,800 land value, \$46,300 improvement value
– \$52,100 total value
- + Nearby Highways: US-74, US-701, I-95
- + Above ground propane storage tanks to be removed
- + **SALE PRICE: \$8,000.00**

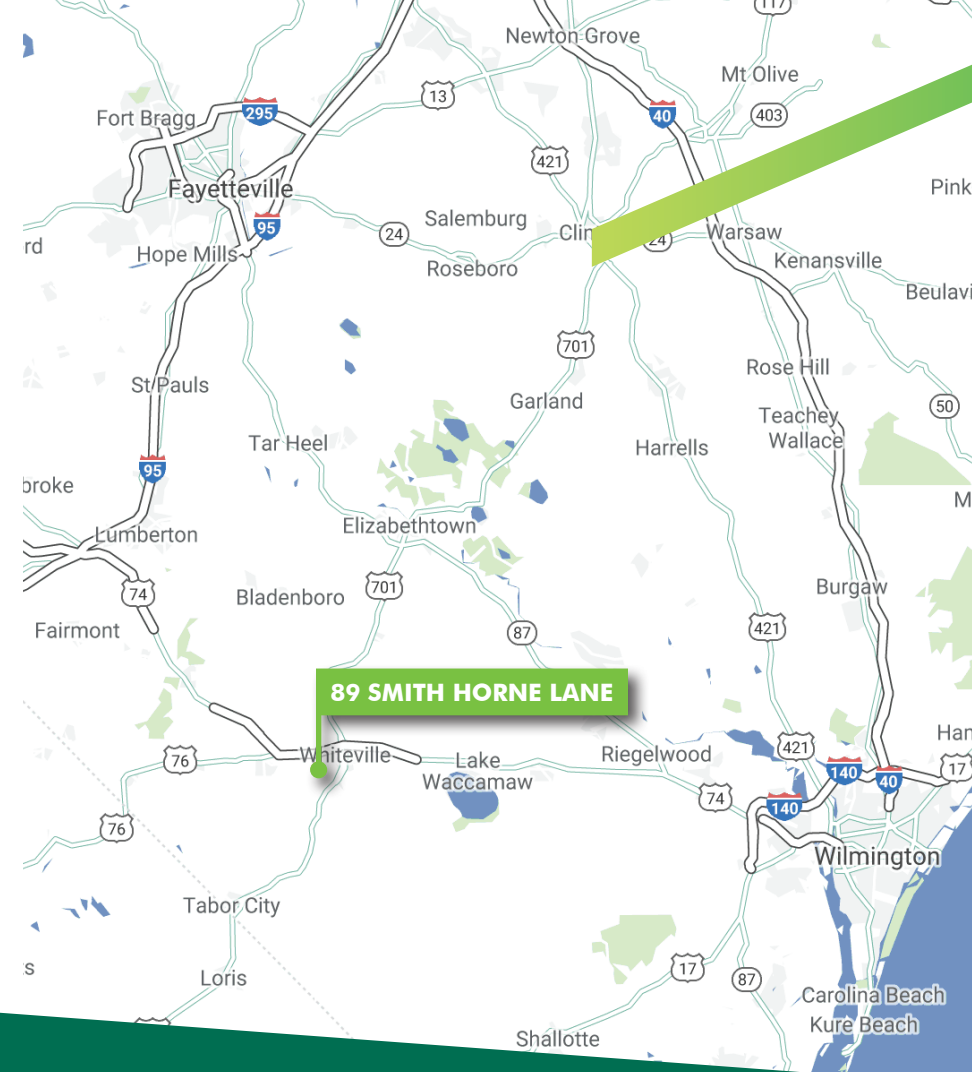
AREA DRIVE TIMES

US-74 Highway	8.5 Miles
Interstate 95	34 Miles
Interstate 74	34 Miles
Wilmington, NC	54 Miles
Fayetteville, NC	71 Miles
Raleigh-Durham International Airport	145 Miles

LOCATION OVERVIEW

PROPERTY DEMOGRAPHICS

RADIUS	5 MINUTES	10 MINUTES	15 MINUTES
2020 Population	1,372	9,720	16,590
Annual Population Growth	-0.01%	0.08%	0.05%
2025 Projected Population	1,357	9,639	16,436
Number of Businesses	47	834	970
Number of Employees	480	8,362	9,485
2020 Households	577	4,054	6,572
Average Household Income	\$39,696	\$54,032	\$54,332



PLEASE CONTACT:

AUSTIN NAGY

Vice President
 +1 919 831 8197
austin.nagy@cbre-raleigh.com

JOHN HOGAN, III

Associate
 +1 919 831 8264
john.hogan@cbre-raleigh.com

© 2021 CB Richard Ellis - Raleigh LLC. All rights reserved. This information has been obtained from sources believed reliable, but has not been verified for accuracy or completeness. You should conduct a careful, independent investigation of the property and verify all information. Any reliance on this information is solely at your own risk. CBRE and the CBRE logo are service marks of CBRE, Inc. All other marks displayed on this document are the property of their respective owners, and the use of such logos does not imply any affiliation with or endorsement of CBRE. Photos herein are the property of their respective owners. Use of these images without the express written consent of the owner is prohibited.