

3,822 SF OFFICE CONDO FOR LEASE

COLUMBUS, OH 43215

815 Grandview Avenue



COLLIN WHEELER

First Vice President
+1 614 430 5050
Collin.Wheeler@cbre.com

KARL HINKEL

Associate
+1 614 430 5019
Karl.Hinkel@cbre.com

CBRE

200 Civic Center Drive
14th Floor
Columbus, Ohio 43215

CBRE



PROPERTY OVERVIEW

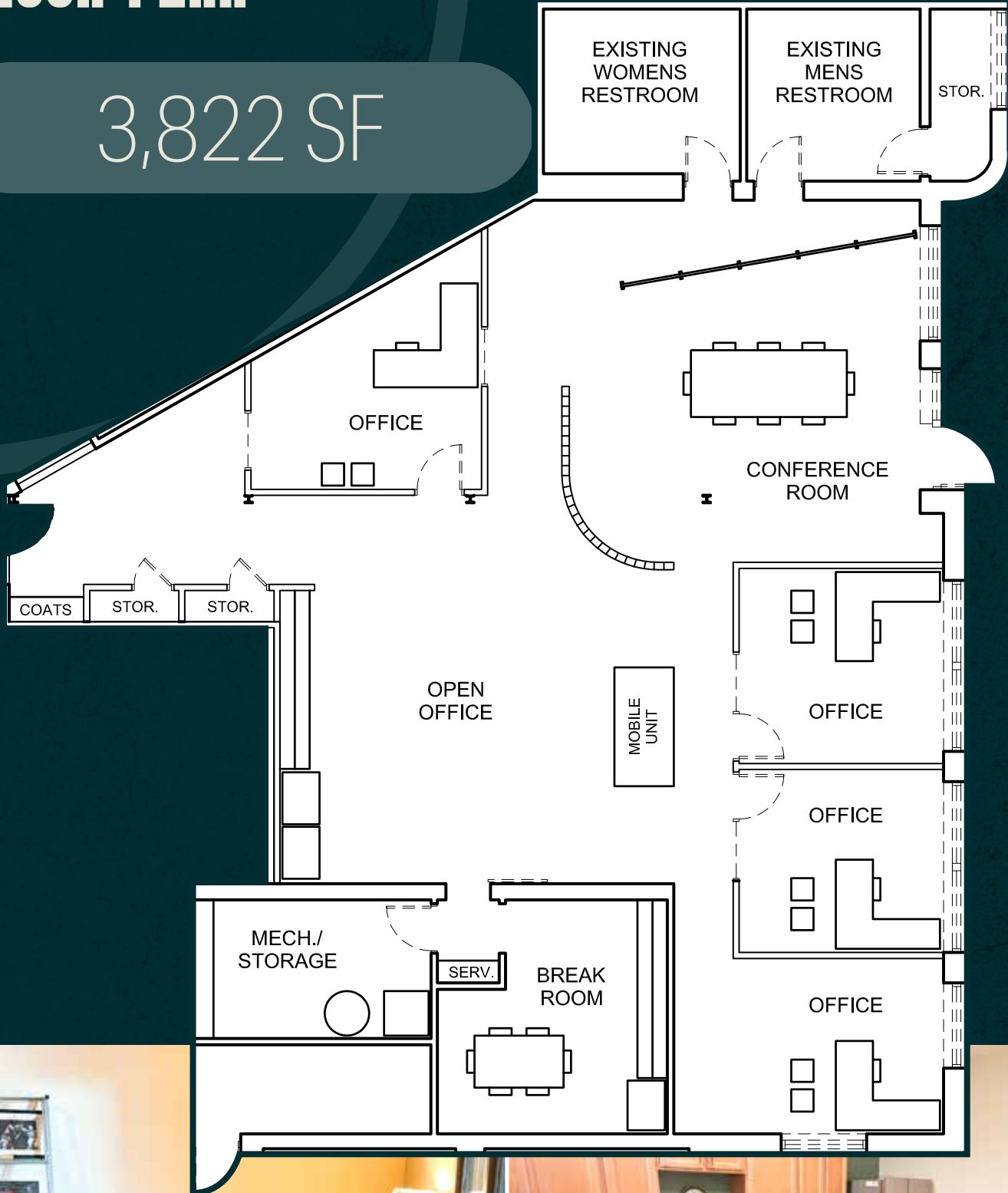
Grandview Office Condo For Lease

- High ceilings with abundant natural light
- In suite restrooms
- Directly across from the new Grandview Crossing development; home to The Rail and the Little Grand Market
- All furniture can remain
- Owner will consider a sale of the office condo
- Located directly off of I-670 and Rt-33

Location	815 Grandview Ave Suite 200
Total Size	3,822 SF
Lease Rate	\$23.00 / FSG
Parking Ratio	4 / 1,000 SF
Year Built / Reno	1946 / 1999
Stories	One (1)

FLOOR PLAN

3,822 SF



AREA MAP

Local Amenities and Demographics



Demographics | One-Mile Radius

11,384
2024 POPULATION

15,601
EMPLOYEES

911
BUSINESSES

5,674
HOUSEHOLDS

\$149K
AVG HH INCOME

\$102K
MEDIAN HH INCOME



3,822 SF OFFICE CONDO FOR LEASE

COLUMBUS, OH 43215

815 Grandview Avenue



COLLIN WHEELER

First Vice President
+1 614 430 5050
Collin.Wheeler@cbre.com

KARL HINKEL

Associate
+1 614 430 5019
Karl.Hinkel@cbre.com

CBRE

200 Civic Center Drive
14th Floor
Columbus, Ohio 43215

© 2024 CBRE, Inc. All rights reserved. This information has been obtained from sources believed reliable but has not been verified for accuracy or completeness. CBRE, Inc. makes no guarantee, representation or warranty and accepts no responsibility or liability as to the accuracy, completeness, or reliability of the information contained herein. You should conduct a careful, independent investigation of the property and verify all information. Any reliance on this information is solely at your own risk. CBRE and the CBRE logo are service marks of CBRE, Inc. All other marks displayed on this document are the property of their respective owners, and the use of such marks does not imply any affiliation with or endorsement of CBRE. Photos herein are the property of their respective owners. Use of these images without the express written consent of the owner is prohibited.

CBRE