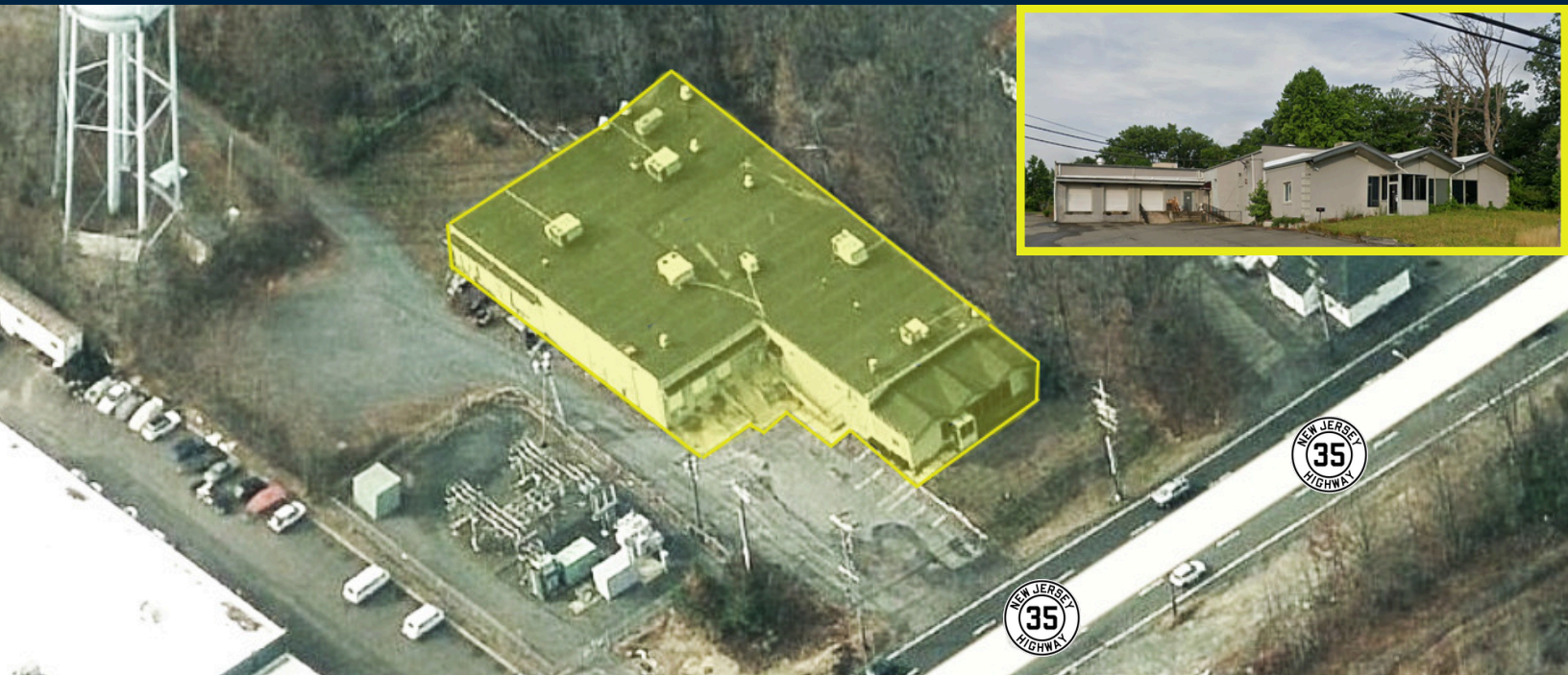


AVAILABLE

139 NJ-35 | KEYPORT, NEW JERSEY 07735

17,150 SF | INDUSTRIAL PROPERTY WITH OFFICE AND PARKING LOT; RIGHT OFF OF NJ-35



PROPERTY OVERVIEW

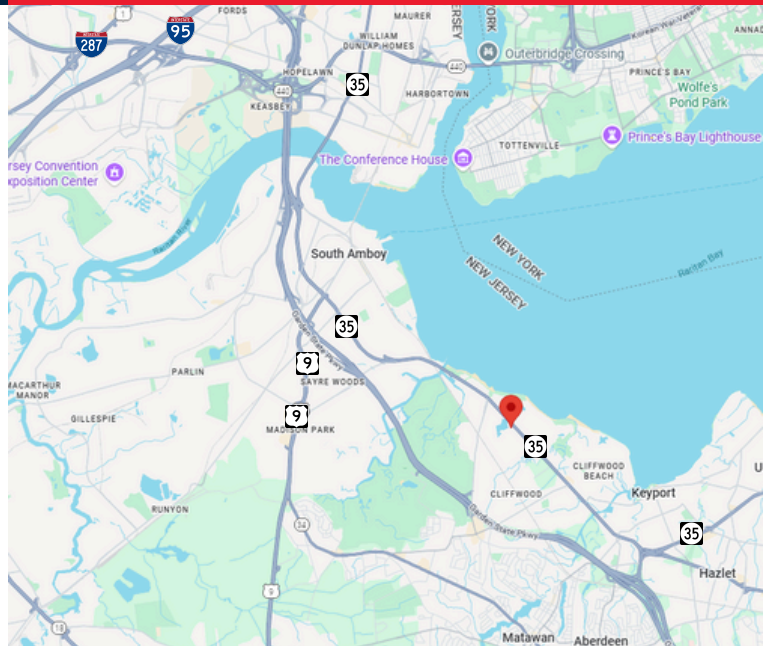
- 17,150 SF ON 1.03 ACRES OF LAND
- 1,500 SF OFFICE SPACE
- NEW SPRINKLER SYSTEM
- NEW ROOF
- FULLY RACKED WAREHOUSE
- 4 LOADING DOCKS
- 1 - DRIVE-IN DOOR
- 14' FT CEILINGS
- HEAVY POWER
- TAXES \$1.63 PER SF

ACCESSIBILITY

- DIRECT ACCESS TO TRUCK ROUTES: NJ-ROUTE 35, NJ-ROUTE 9, I-95, AND I-287.



EASY ACCESS TO MAJOR ROADWAYS



**CONTACT
EXCLUSIVE AGENT**

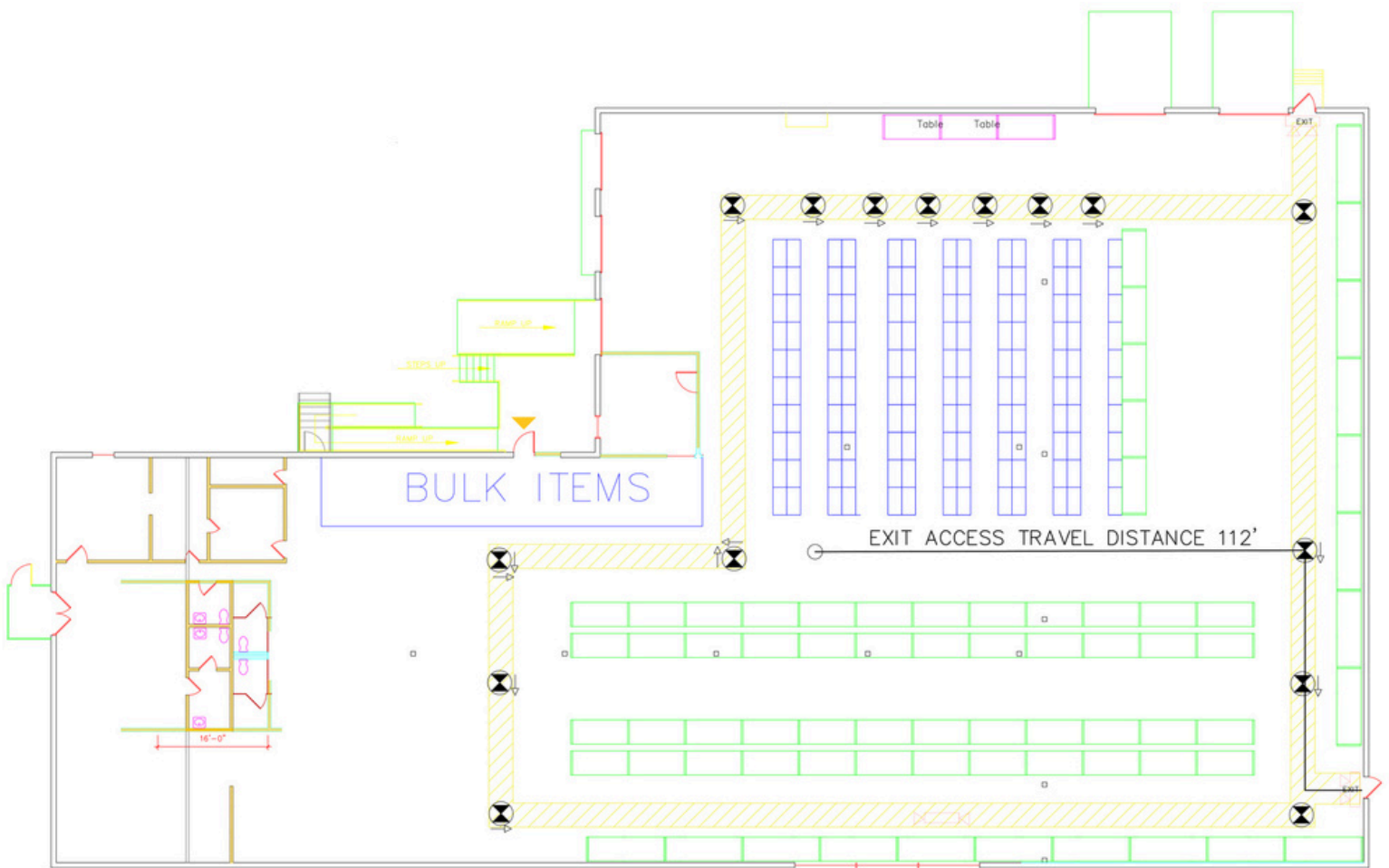
YEHUDA DEUTSCH
718-809-6436 (MOBILE)
ydeutsch@greiner-maltz.com

GREINER-MALTZ
REAL ESTATE
CREATING OPPORTUNITIES TOGETHER.

AVAILABLE

139 NJ-35 | KEYPORT, NEW JERSEY 07735

17,150 SF | INDUSTRIAL PROPERTY WITH OFFICE AND PARKING LOT; RIGHT OFF OF NJ-35



**CONTACT
EXCLUSIVE AGENT**

YEHUDA DEUTSCH
718-809-6436 (MOBILE)
ydeutsch@greiner-maltz.com

GREINER-MALTZ
REAL ESTATE
CREATING OPPORTUNITIES TOGETHER.