

Medical/office space for sublease

1000 CRESCENT GREEN, CARY, NC 27518



AVISON
YOUNG

Property overview

MEDICAL/OFFICE SPACE FOR SUBLEASE

- Medical/office space for sublease
- Located in Cary Medical Plaza III
- ±7,737 SF available
- Located within close proximity to US 1 and US 64
- Convenient access to numerous amenities including restaurants, retail, hotels, banks, fitness and more

OFFERING SUMMARY

Address	1000 Crescent Green
City, State, Zip	Cary, NC 27518
Available SF	±7,737 SF
Building SF	±17,688 SF
Stories	2
Parking	4.00/1,000 SF
Year Built	1999
Master Lease Expiration	8/31/2027
Sublease Rate	Negotiable
Lease Rate	Contact Broker
Market	Raleigh/Durham
Submarket	Cary

DEMOGRAPHICS



609,300
5-MILE POPULATION



40
MEDIAN AGE



66,761
HOUSEHOLDS



\$153,610
AVERAGE HH INCOME

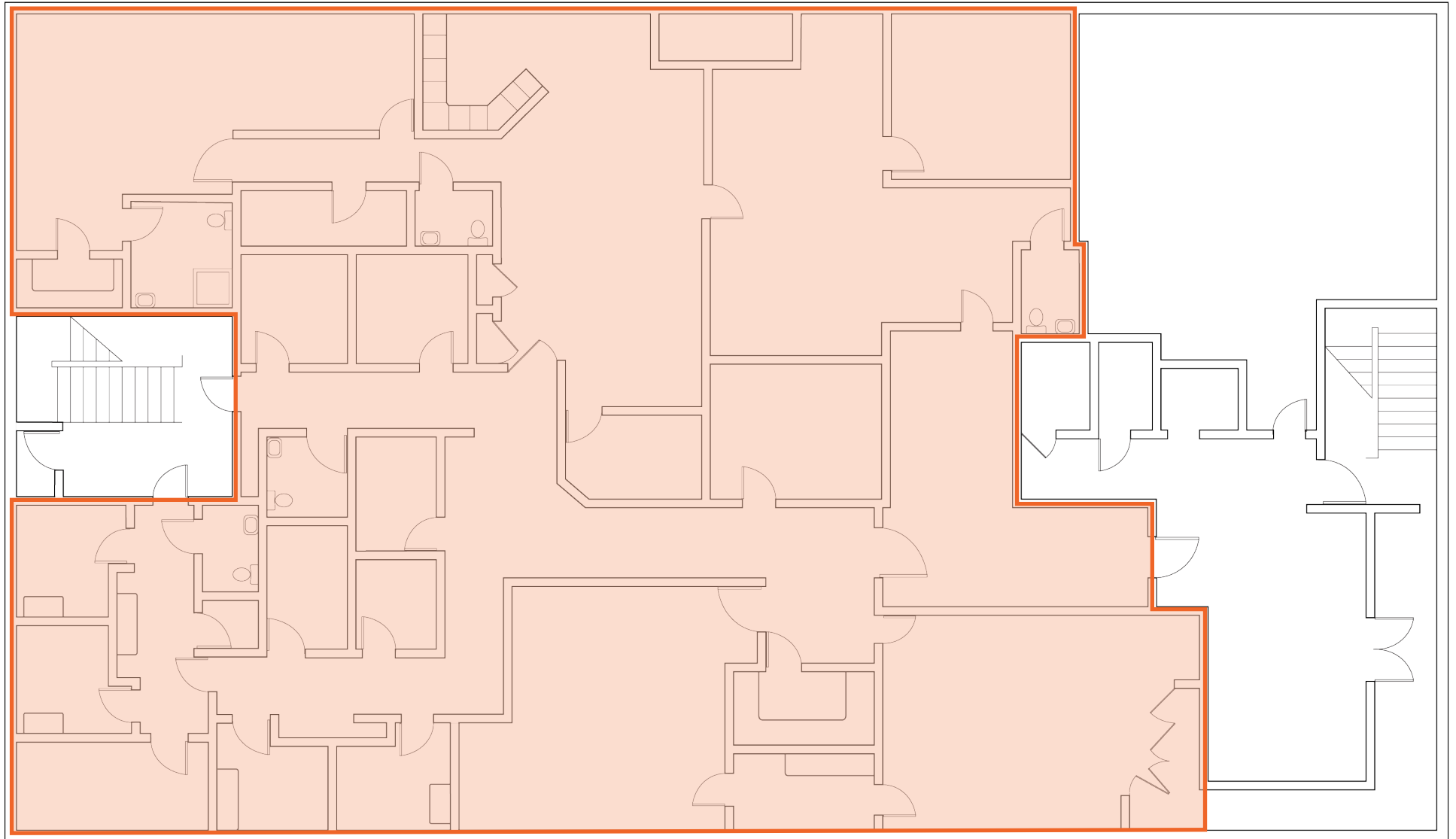


\$508,098
MEDIAN HOME VALUE

**AVISON
YOUNG**

Floor plan

MEDICAL/OFFICE SPACE FOR SUBLEASE



Available SF ±7,737 SF

Get in touch.

CONTACTS

Baxter M. Walker, III, SIOR, CCIM
Principal
+1 919 913 1118
baxter.walker@avisonyoung.com

© 2026 Avison Young – All rights reserved.

E. & O.E.: The information contained herein was obtained from sources which we deem reliable and, while thought to be correct, is not guaranteed by Avison Young.

**AVISON
YOUNG**