

EXCLUSIVE LISTING!

0.97 +/- Acres at Moapa Valley Blvd
Listed for \$150,000- Logandale, NV 89021



- ❖ APN # 041-27-402-039/040/042
- ❖ Moapa Valley Jurisdiction-Clark County
- ❖ Zoned Residential Single-Family 80 (RS80) –very low-density, agricultural uses-each lot 80,000 S.F. min.
- ❖ Planned land use –mid intensity suburban neighborhood (up to 8 du/acre)
- ❖ Property Taxes- \$559.35
- ❖ Desirable small town living northeast of Las Vegas near Valley of Fire, Mesquite, Lake Mead Recreation Area.



Mark Anthony Rua
Brokers

S.026655

2855 St Rose Parkway, Suite 100, Henderson, NV 89052
markanthonyrua@gmail.com www.mrlandlasvegas.com

Office: 702-992-7534
Cell: 702-595-6244



The information contained herein is subject to verification and no liability for errors or omissions is assumed. The price, data, and other information are subject to change or the listing may be withdrawn without notice.

0.97 +/- Acres at Moapa Valley Blvd



Mark Anthony Rua
Brokers

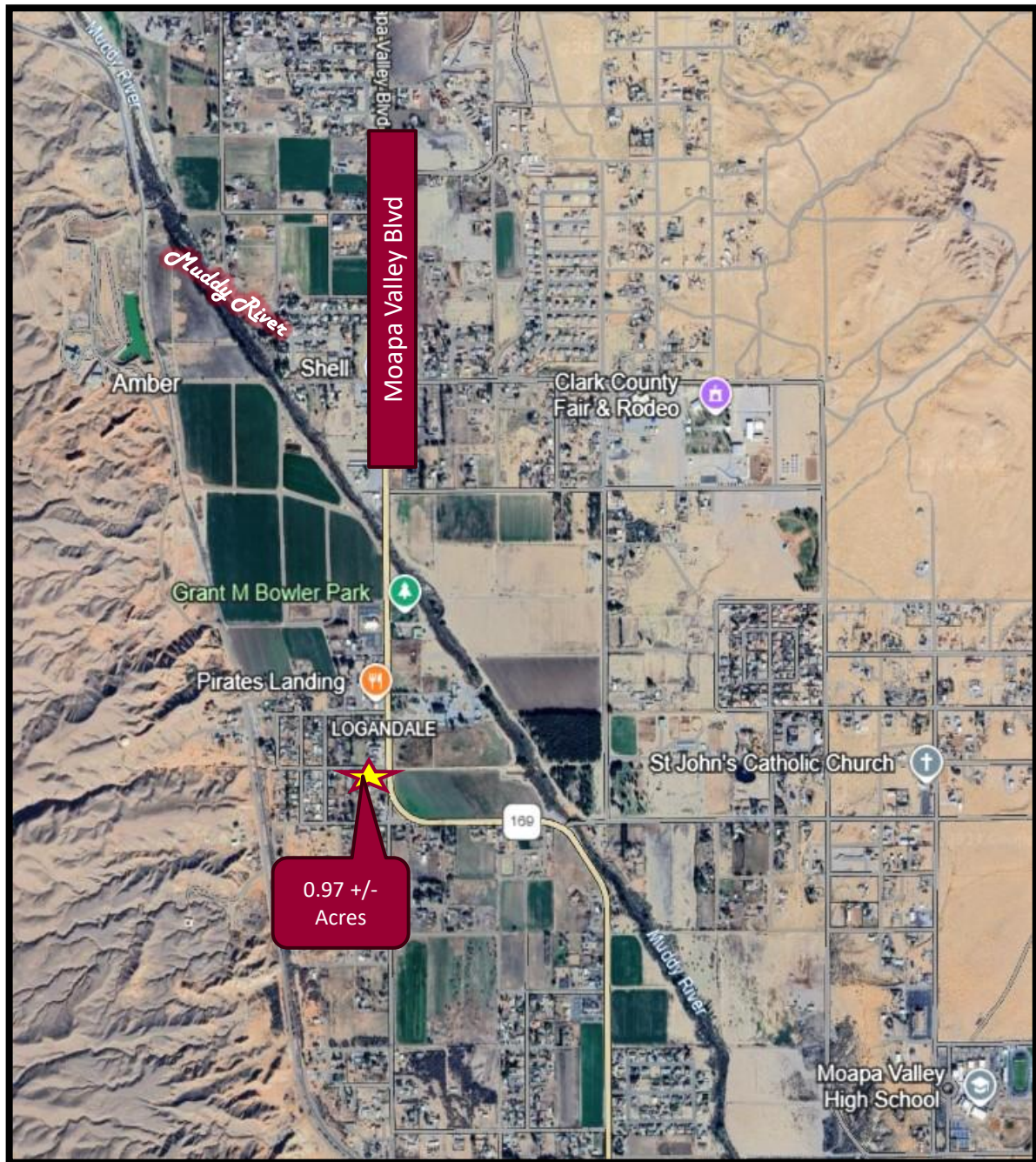
2855 St Rose Parkway, Suite 100, Henderson, NV 89052
markanthonyrua@gmail.com www.mrlandlasvegas.com

Office: 702-992-7534
Cell: 702-595-6244



The information contained herein is subject to verification and no liability for errors or omissions is assumed. The price, data, and other information are subject to change or the listing may be withdrawn without notice.

Map of Logandale in Moapa Valley



Mark Anthony Rua
Brokers

2855 St Rose Parkway, Suite 100, Henderson, NV 89052
markanthonyrua@gmail.com www.mrlandasvegas.com

Office: 702-992-7534
Cell: 702-595-6244



The information contained herein is subject to verification and no liability for errors or omissions is assumed. The price, data, and other information are subject to change or the listing may be withdrawn without notice.

