



FOR SALE/LEASE

1112 CHATBURN AVE
HARLAN, IA 51537

17,693 SF | \$620,000 | \$3.50 PSF NNN

ALEC WILCOX, CCIM

Vice President
+1 515 210 9446
awilcox@iowaca.com

COREY SEDREL

Senior Associate
+1 515 979 1454
csedrel@iowaca.com

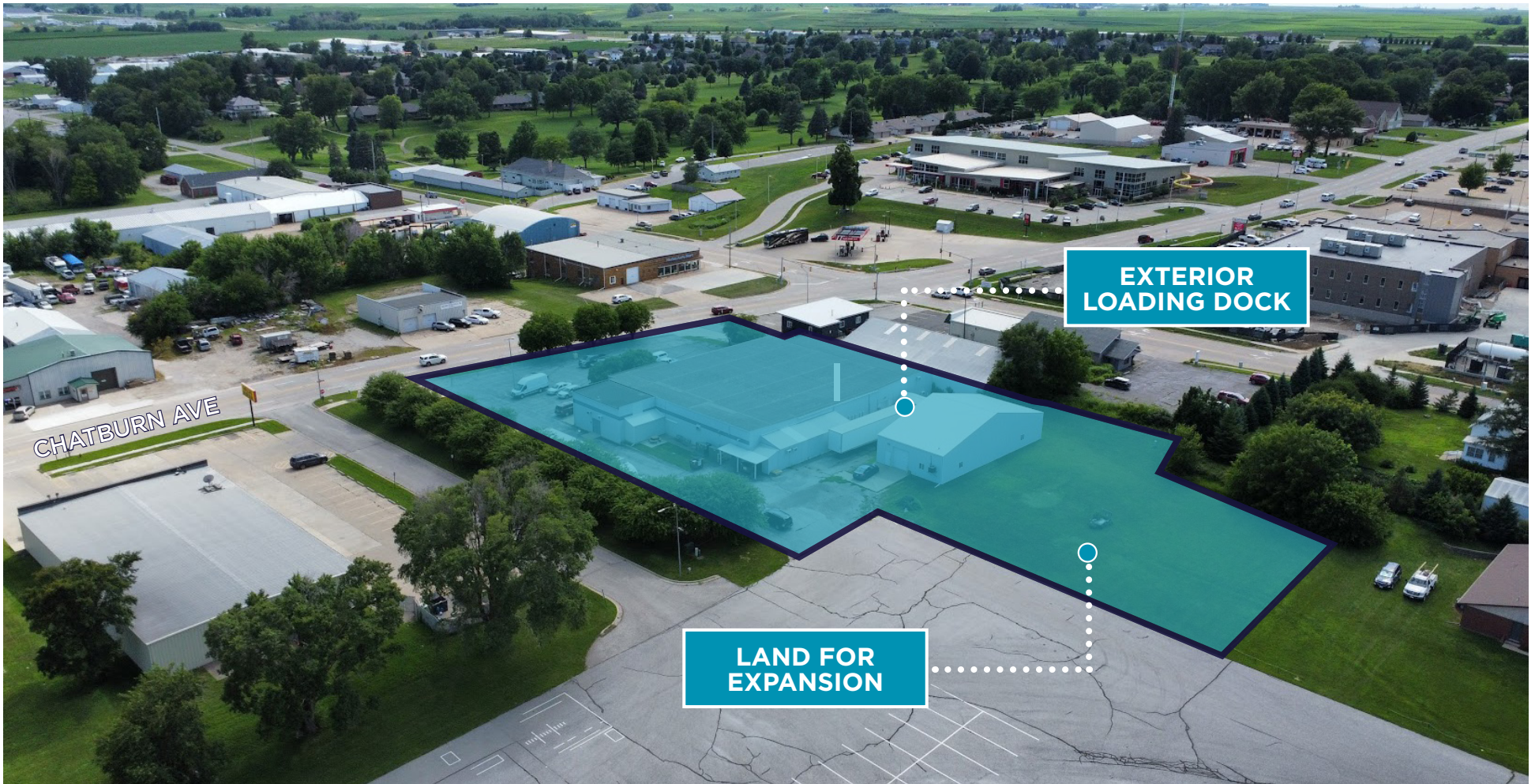


**CUSHMAN &
WAKEFIELD**

Iowa Commercial Advisors

PROPERTY HIGHLIGHTS

- Exterior loading dock
- Building is fully conditioned
- Excess land available for future expansion
- Strong visibility along Chatburn Avenue
- Potential for conversion to retail use
- Well-maintained building with recent upgrades
- Convenient 54 minute drive to Omaha
- 10 miles north of Interstate 80

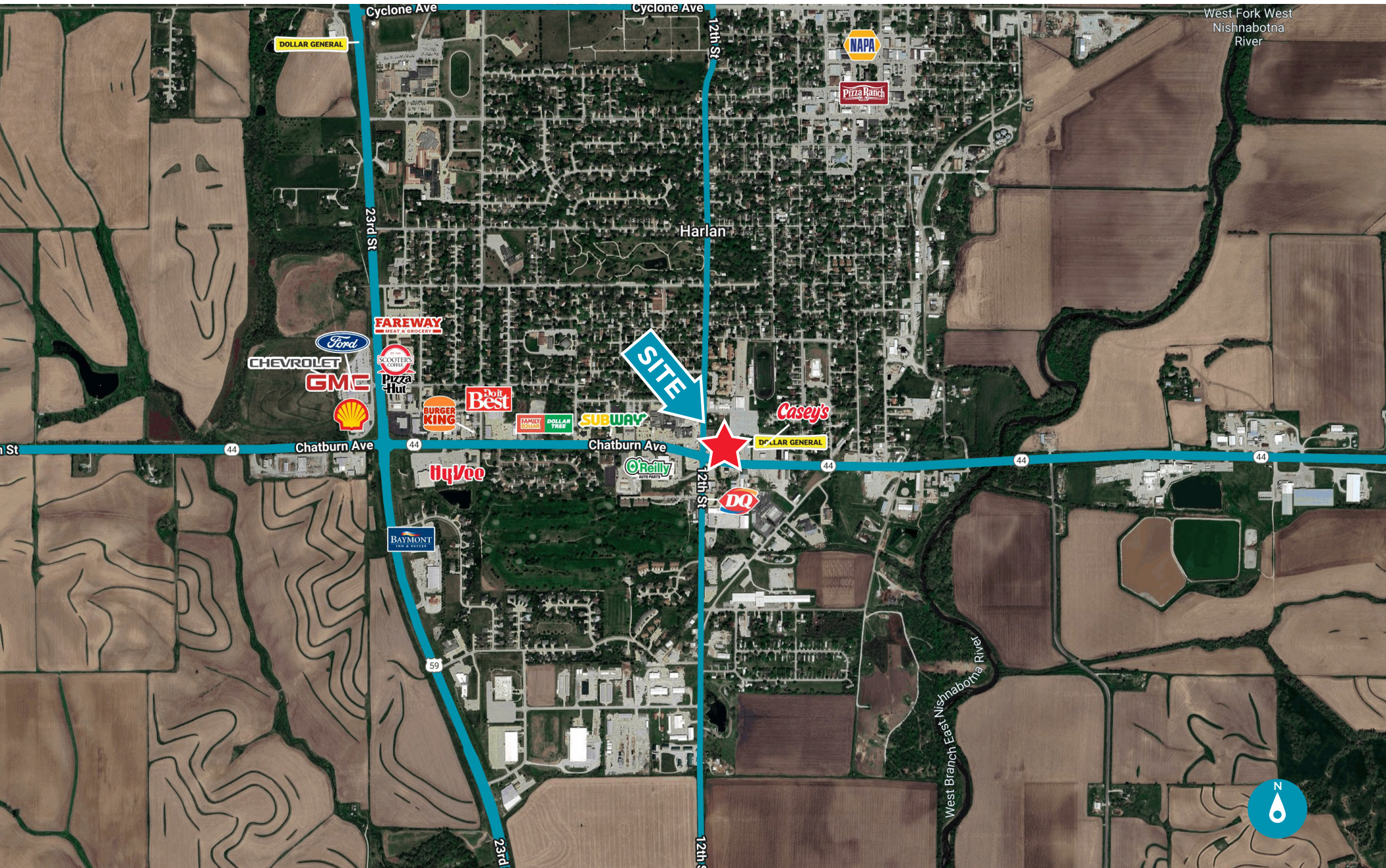


PROPERTY FEATURES

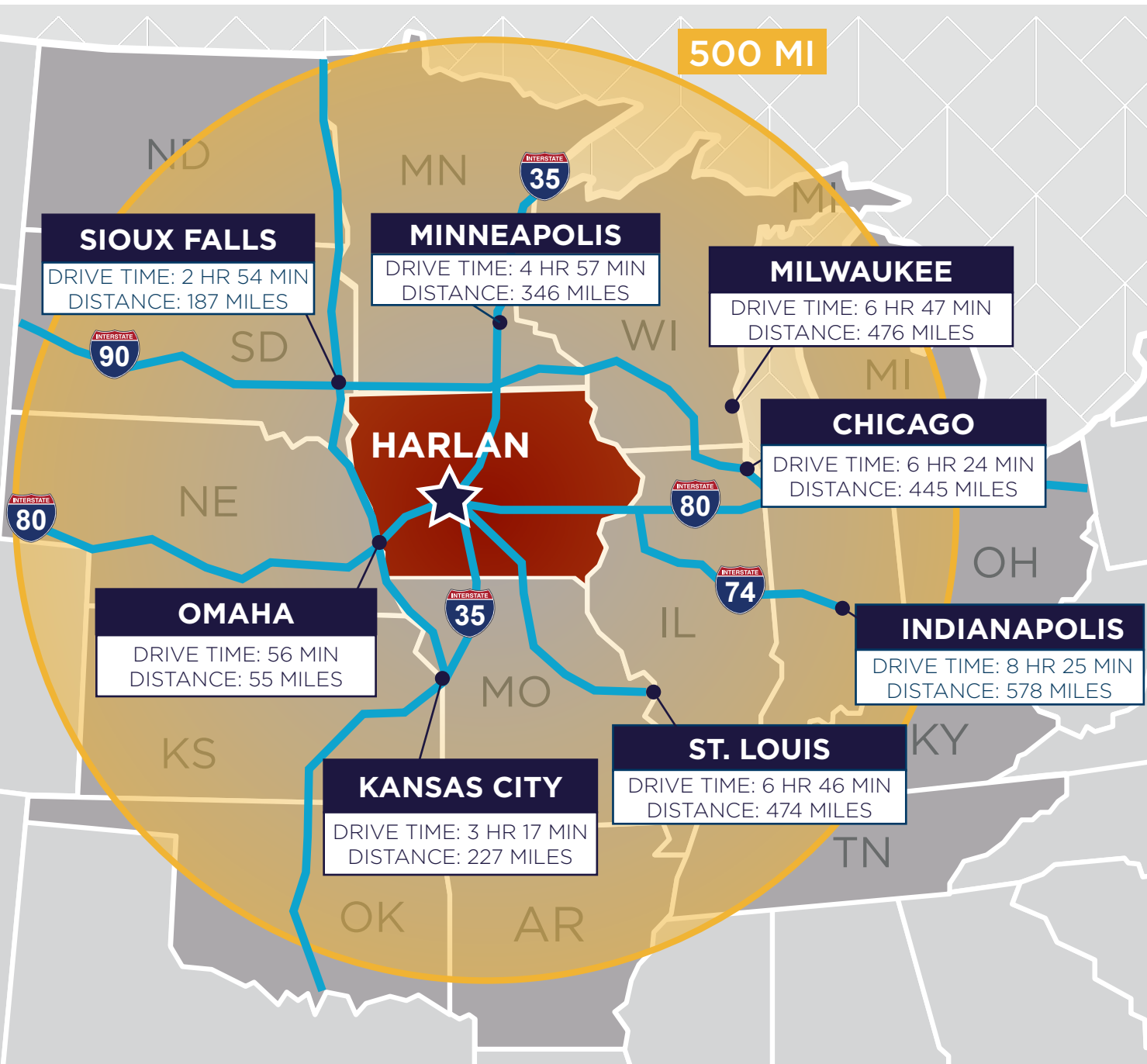
Building Size:	17,693 SF
Land Size:	2.18 AC
Loading Dock:	(1) Exterior Dock
Year Built:	1969
Year Renovated:	2012
Zoning:	Commercial
Floor:	1
Occupancy:	Available 60 days
Sale Price:	\$620,000
Lease Rate:	\$3.50 PSF NNN



LOCATION



MIDWEST HUB





FOR SALE/LEASE

1112 CHATBURN AVE
HARLAN, IA 51537

17,693 SF | \$620,000 | \$3.50 PSF NNN

ALEC WILCOX, CCIM

Vice President

+1 515 210 9446

awilcox@iowaca.com

COREY SEDREL

Senior Associate

+1 515 979 1454

csedrel@iowaca.com



**CUSHMAN &
WAKEFIELD**

Iowa Commercial Advisors

Independently Owned and Operated / A Member of the Cushman & Wakefield Alliance ©2024 Cushman & Wakefield.
All rights reserved. The information contained in this communication is strictly confidential. This information has been obtained from sources believed to be reliable but has not been verified. No warranty or representation, express or implied, is made as to the condition of the property (or properties) referenced herein or as to the accuracy or completeness of the information contained herein, and same is submitted subject to errors, omissions, change of price, rental or other conditions, withdrawal without notice, and to any special listing conditions imposed by the property owner(s). Any projections, opinions or estimates are subject to uncertainty and do not signify current or future property performance.