

# THE FOUNDRY DISTRICT



LEASED BY:

  
**STREAM**

OWNED BY:

 **ASANA PARTNERS**



THE FOUNDRY DISTRICT

## A CANVAS FOR CULTURE

Where alleys become artful expressions and exhibitionists come in the form of distillers, merchants, restaurateurs, and innovative executives, The Foundry District houses an unexpected collection of epic proportion in the heart of Fort Worth's Cultural District. A place where each space has been expertly curated, and the ensemble of culture casters paints a one-of-a-kind picture of Fort Worth.

Over six acres and a dozen mid-century industrial buildings have been transformed into canvases of commerce from showrooms to creative offices, to curated shops and watering holes. Foundry is anchored by Inspiration Alley, named one of the top "Outdoor Art Experiences" in the United States by Forbes with over 70+ pieces of fine art to be enjoyed in everyday life. It's an exhibition of inspiration, where culture is not only crafted but found in the most unexpected of places.

*The most elevated versions of the everyday extraordinary are found in Foundry.*

STREET

A CULINARY STUDIO  
**ORGANIC & LOCAL**  
MANELY & SUSTAINABLY-RAISED ME  
JARRED GOODS • SMALL TREATS  
**& GO DELIGHT**  
WORKSH



THOUGH  
BECOM  
THING



WHITE SETTLEMENT ROAD

DOWNTOWN [2 miles] →

# DISTRICT SITE MAP

■ PARKING

① 2623 White Settlement

② 2628 Whitmore

③ 2621 Whitmore

④ 2625 Whitmore

⑥ 2617 Whitmore

⑦ 200 Carroll

⑧ 2712 Weisenberger

⑨ 2608 Weisenberger

⑩ 2628 Weisenberger

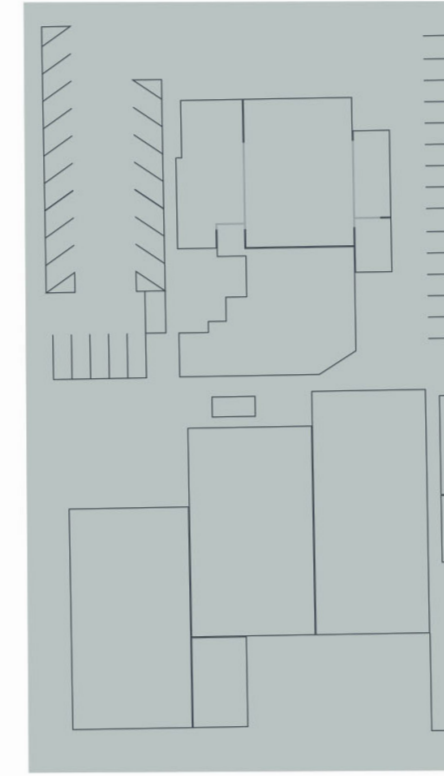
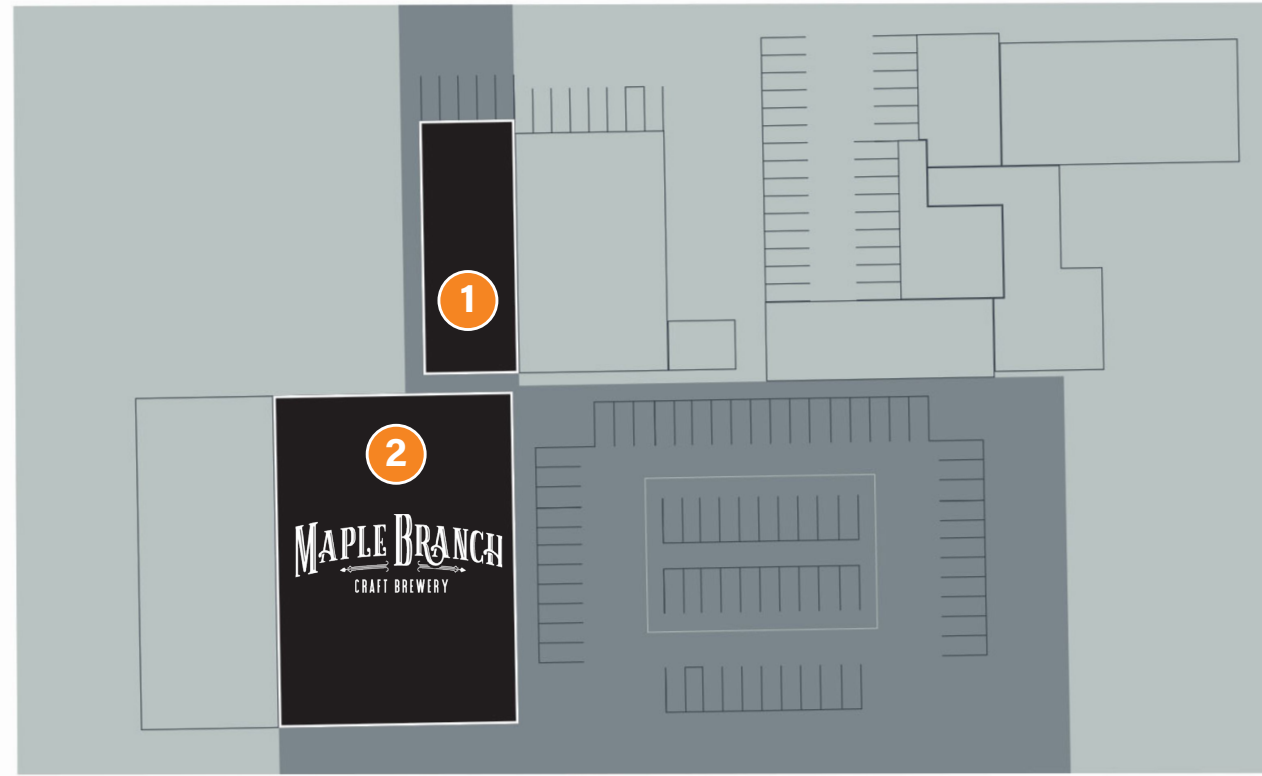
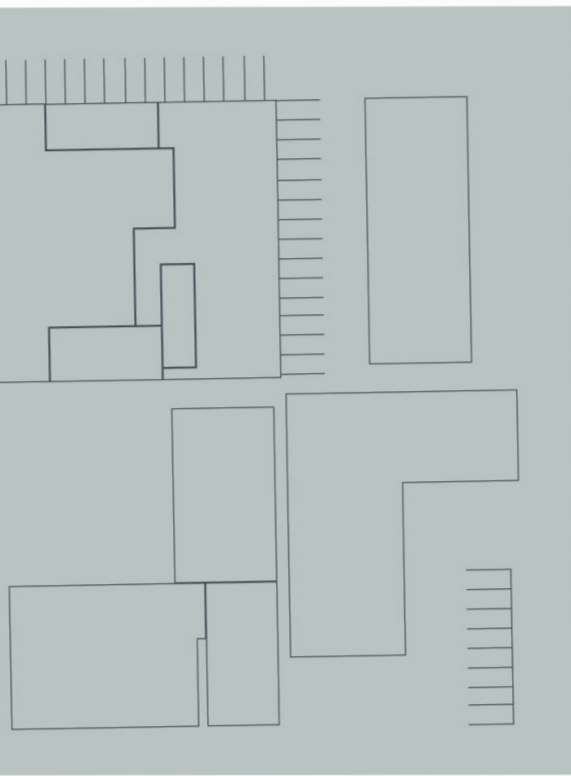
⑪ 2616 Weisenberger

⑫ GL Seaman

⑬ 2600 Weisenberger

⑭ 2708 Weisenberger

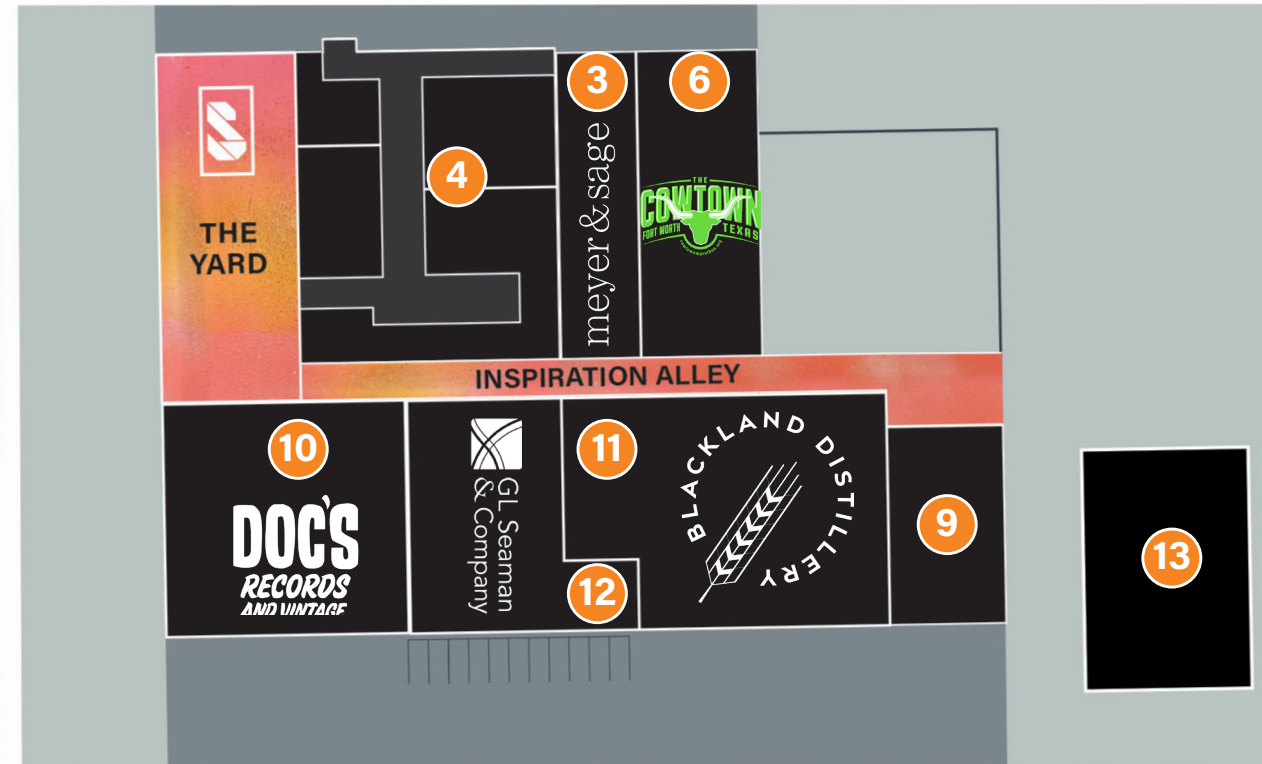
⑮ 2700 Weisenberger



WHITMORE STREET

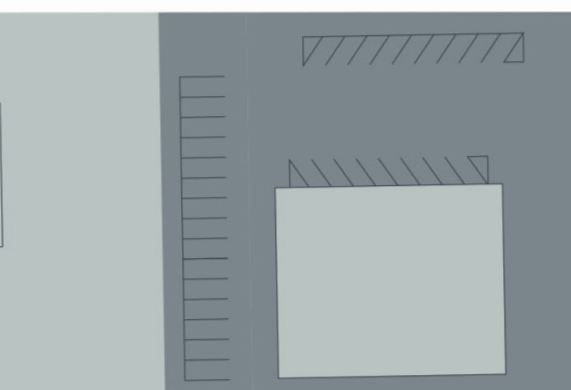


CARROLL STREET

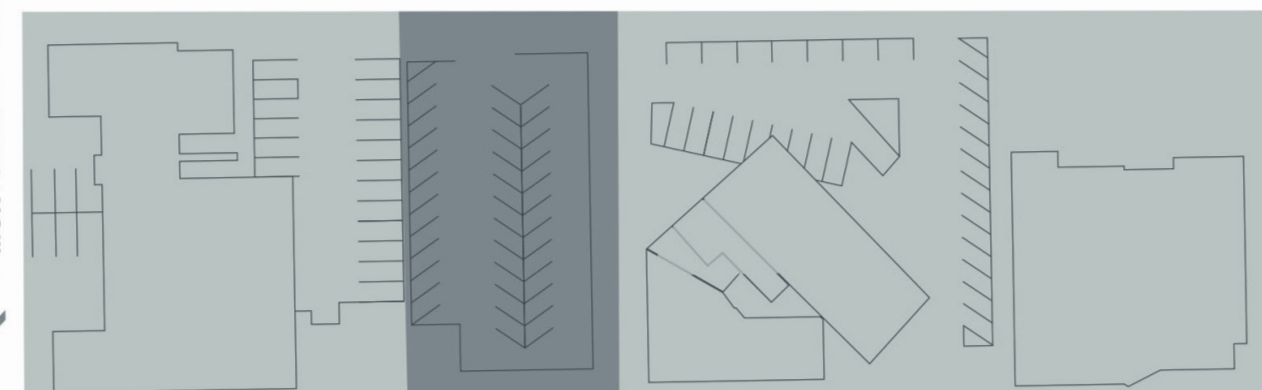


VACEK STREET

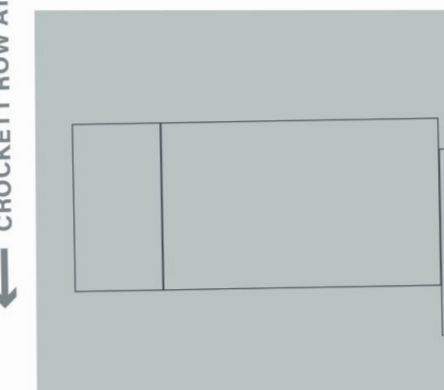
WEISENBERGER STREET

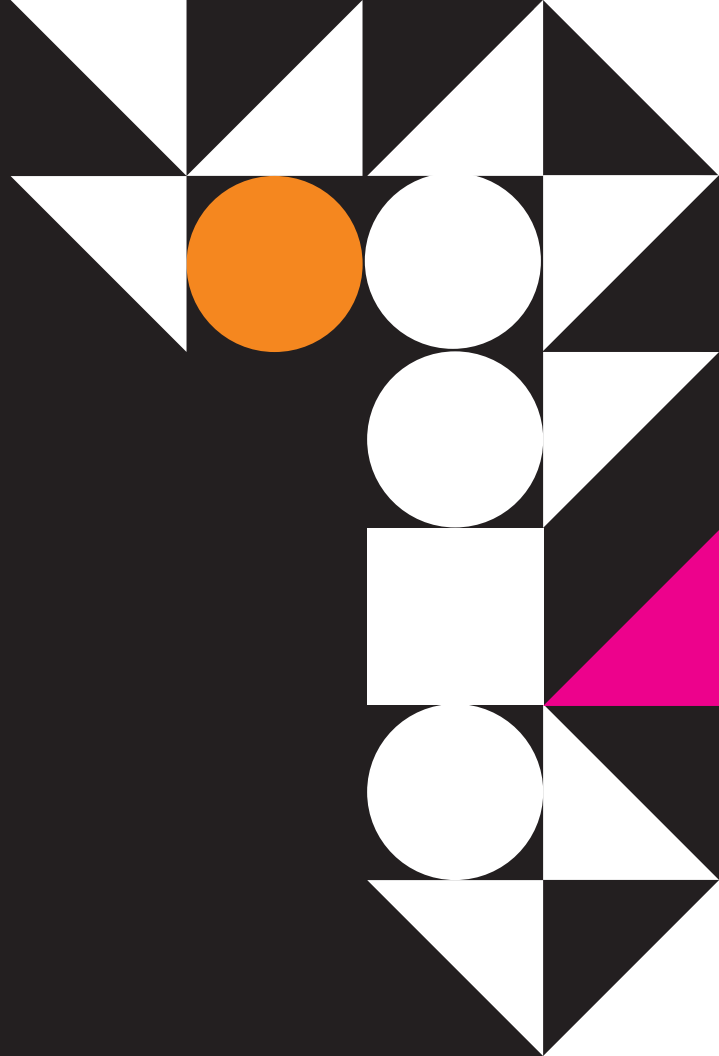


← MONTGOMERY PLAZA [0.5 miles]



← CROCKETT ROW AT WEST 7TH [1 mile]





# FOUNDRYFW.COM

For More Information, Please Contact

**CHRIS DOGGETT** | 817.877.1316 | [chris.doggett@streamrealty.com](mailto:chris.doggett@streamrealty.com)  
**MATTHEW CHENEY** | 817.209.7511 | [matthew.cheney@streamrealty.com](mailto:matthew.cheney@streamrealty.com)

LEASED BY:



OWNED BY:

