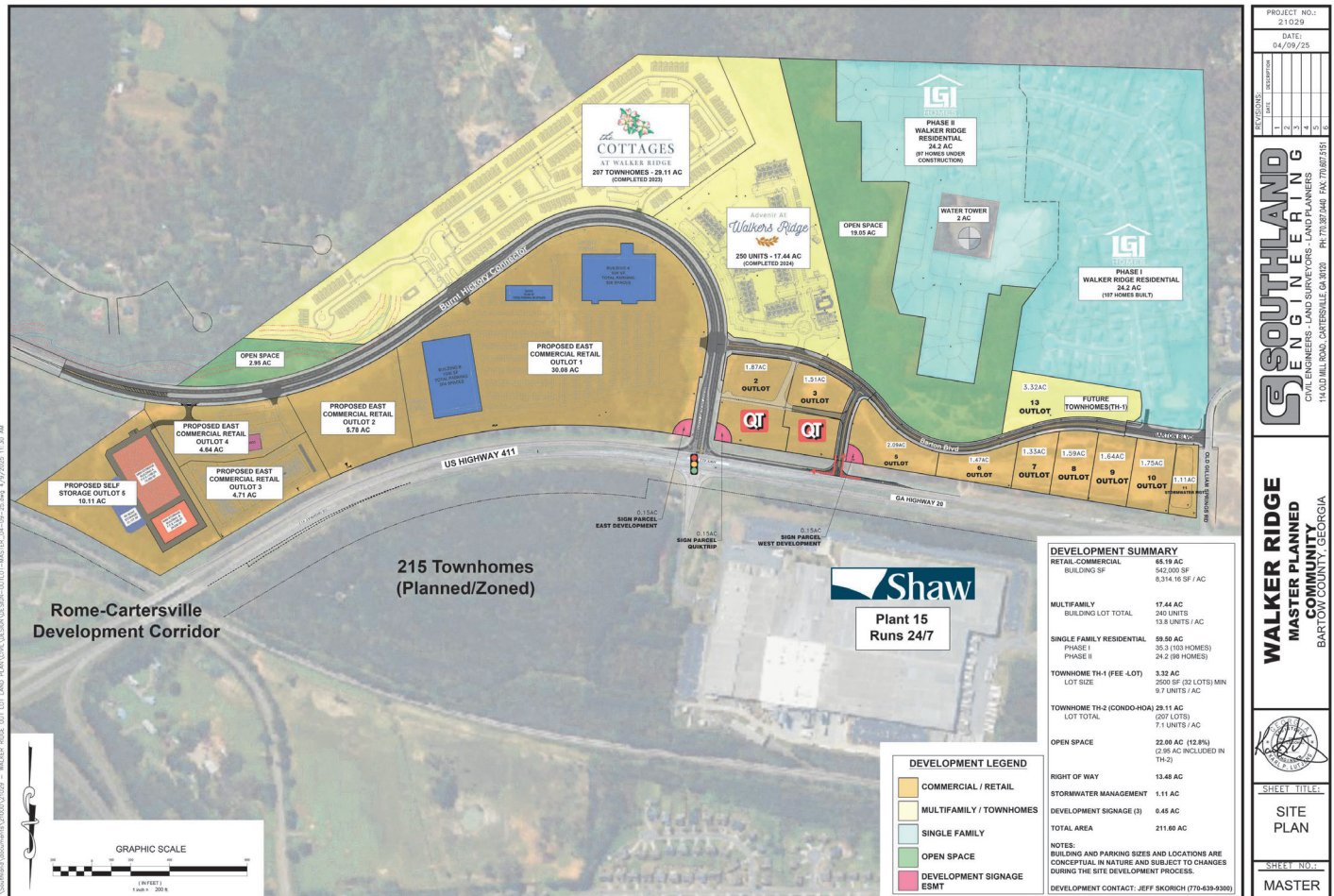


212 Acre Mixed Use Development: 15 Retail Parcels for Sale

U.S. Highway 411 & Burnt Hickory Connector
Cartersville, Bartow County, GA



WALKER
RIDGE



- 661 residential units SOLD, surrounded by active single family and multifamily communities
- Signalized access at U.S. Hwy 411 and Burnt Hickory Connector
- Across from Shaw Plant 15 and near Hyundai/SK On Battery Plant (3,500+ jobs, 24/7 ops)
- QuikTrip secured two adjacent corner lots for gas and car wash
- ~30,000 vehicles per day on Hwy 411
- All utilities onsite and parcels ready for development

- Ideal uses:
 - QSRs/Restaurants
 - Retail
 - Supermarket
 - Hotels
 - Medical/Healthcare/Drug Store
 - Auto service
 - Bank

Richard Moore, Partner
Lauren Moore, Marketing
 ☎ 404/512-2890
 ✉ lauren@migatl.com

Scan the QR code for more development information



PROJECT NO.: 21029
 DATE: 04/09/25

REVISIONS:

NO.	DATE	DESCRIPTION
1		
2		
3		
4		
5		
6		

SOUTHLAND ENGINEERING
 CIVIL ENGINEERS - LAND SURVEYORS - LAND PLANNERS
 114 GOLF HILL ROAD, CARTERSVILLE, GA 30108 PH: 770.387.0448 FAX: 770.627.5181

WALKER RIDGE MASTER PLANNED COMMUNITY
 BARTOW COUNTY, GEORGIA

WALKER RIDGE ENGINEERING
 SITE PLAN

SHEET NO.: MASTER