



THIS DRAWING IS FOR SQUARE FOOTAGE  
CALCULATIONS ONLY - ANY EXACT  
DIMENSIONS TO BE VERIFIED PRIOR TO  
EXECUTION OF WORK.

GROUND FLOOR PLAN

SCALE: 1/16" = 1'-0"

1900 10TH AVE | EXISTING TENANTS

PHYSICIANS REALTY TRUST, COLUMBUS, GA | 22 SEPT. 2016



11 9th St | Columbus, GA | 706.571.6923



THIS DRAWING IS FOR SQUARE FOOTAGE  
CALCULATIONS ONLY - ANY EXACT  
DIMENSIONS TO BE VERIFIED PRIOR TO  
EXECUTION OF WORK.

## SECOND FLOOR PLAN

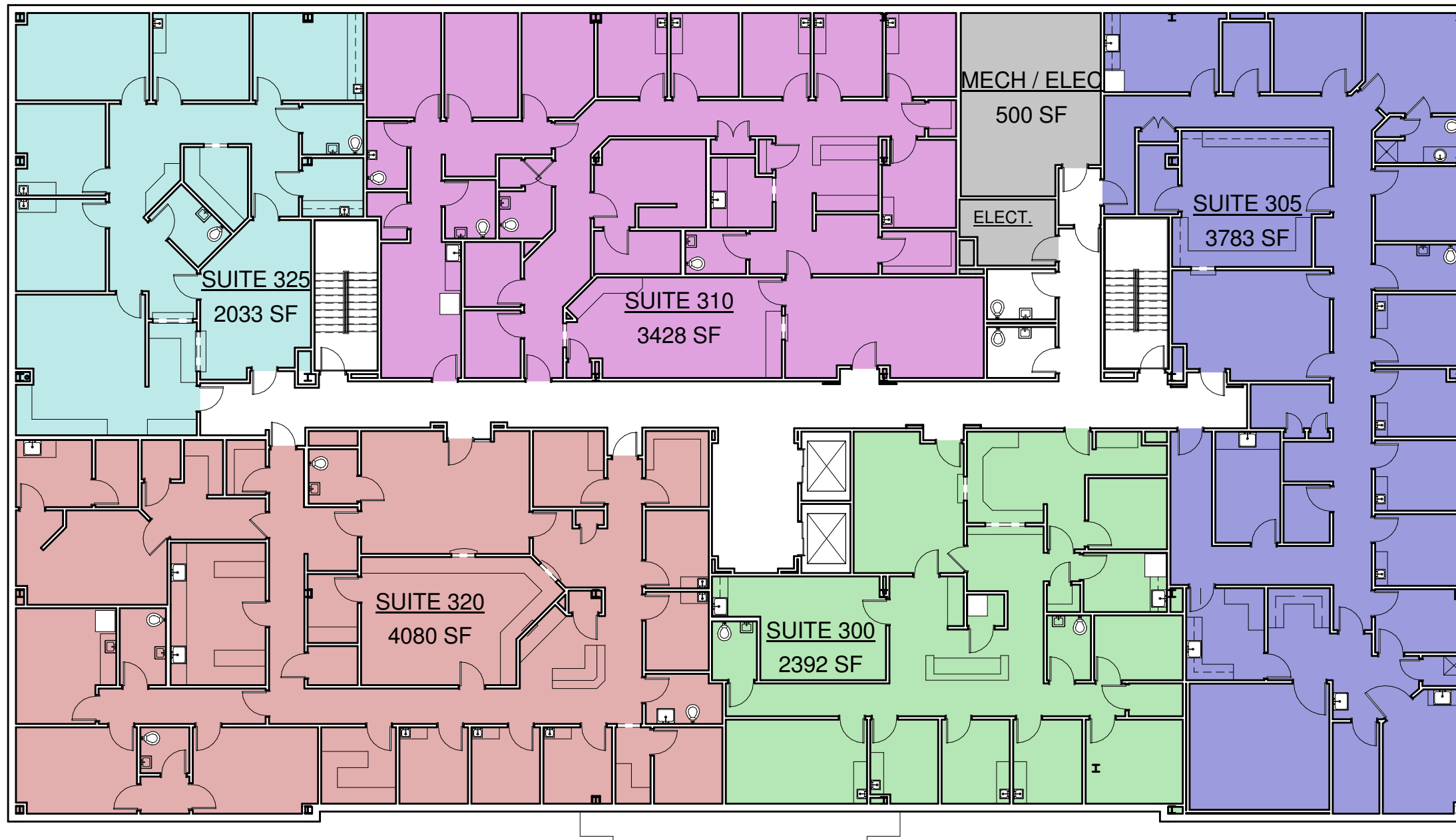
SCALE: 1/16" = 1'-0"

1900 10TH AVE | EXISTING TENANTS

PHYSICIANS REALTY TRUST, COLUMBUS, GA | 22 SEPT. 2016



11 9th St | Columbus, GA | 706.571.6923



THIS DRAWING IS FOR SQUARE FOOTAGE  
CALCULATIONS ONLY - ANY EXACT  
DIMENSIONS TO BE VERIFIED PRIOR TO  
EXECUTION OF WORK.

## THIRD FLOOR PLAN

SCALE: 1/16" = 1'-0"

1900 10TH AVE | EXISTING TENANTS

PHYSICIANS REALTY TRUST, COLUMBUS, GA | 22 SEPT. 2016



11 9th St | Columbus, GA | 706.571.6923