

SUBLEASE

1,875 RSF Class A Office at The Timbers at Van Mall

9120 NE Vancouver Mall Loop, Suite 270, Vancouver, WA 98662



Features of Class A Office Space:

- Suite 270 - 1,875 RSF
- Reception area, conference room, kitchen bar and storage/server room
- 3 Private Offices
- See Floor Plan on Page 2
- Beautiful Northwest Lodge Style Building
- Easy access to I-205 and SR 500
- Restaurants, Amenities & Vancouver Mall nearby.

Rate:

\$25.00/PSF/Year Full Service

Sublease expires on: 08/31/21

For more information contact
Dave Brown at (360) 735-8001
www.CCPprop.com

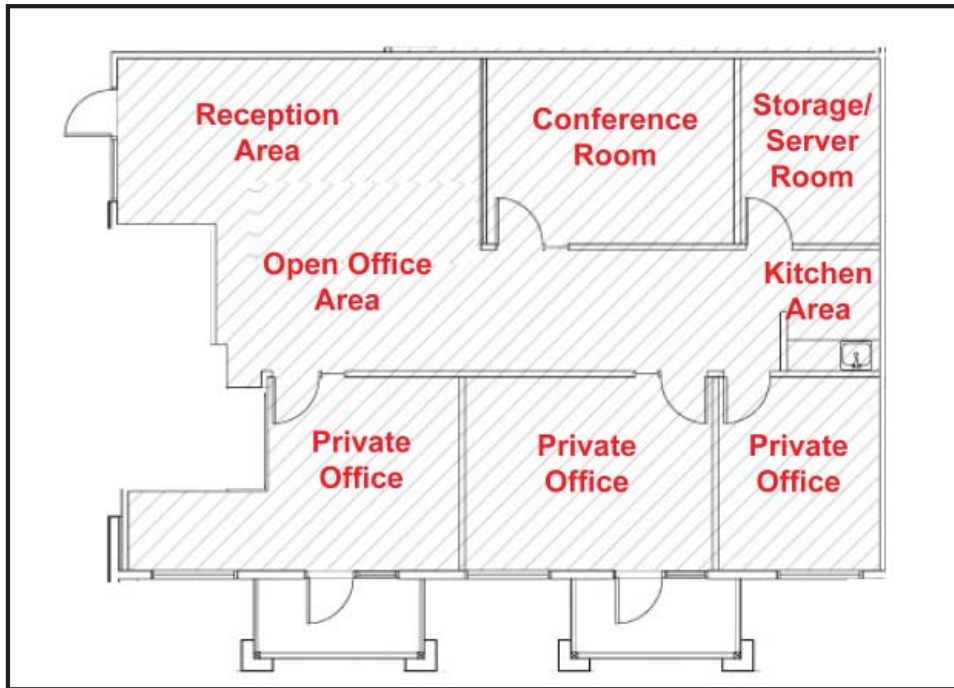


**Columbia
Commercial**
Commercial Leasing | Sales | Property Management

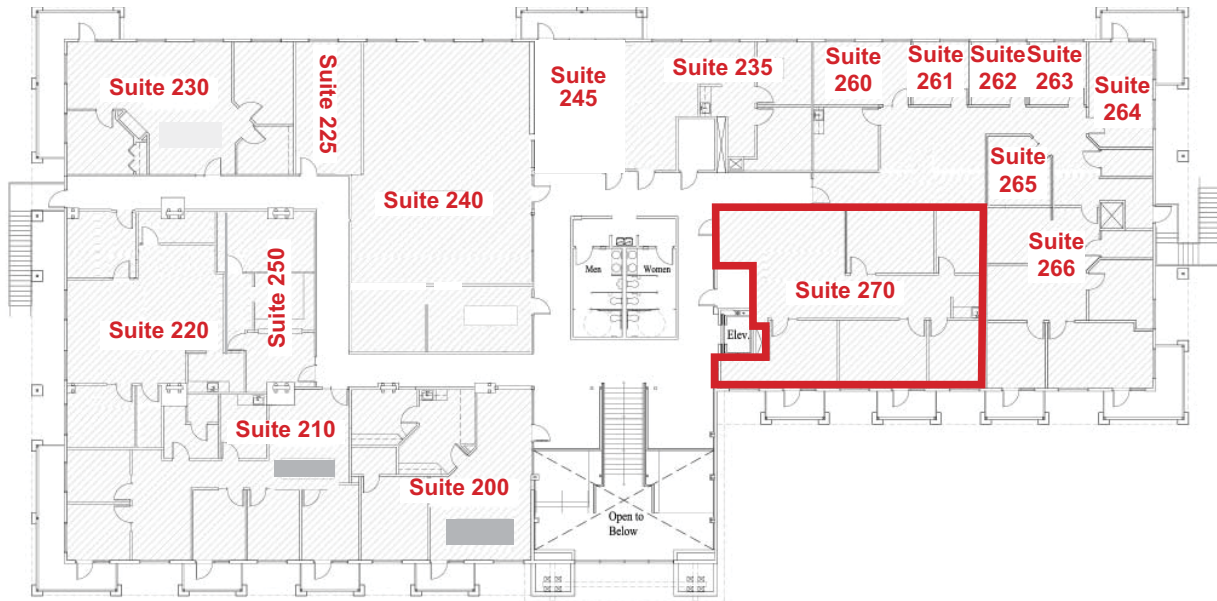
9120 NE Vancouver Mall Loop, Suite 210, Vancouver, WA 98662
www.CCPprop.com • (360) 735-8001

*The information contained herein has been obtained from sources we deem reliable.
We do not, however, guarantee its accuracy. All information should be verified prior to purchase or lease.*

Suite 270 (1,824 RSF) - Space Plan



Timbers Building - 2nd Floor Plan



Second Floor Schematic Plan

Note: Furniture, Reception Desks, Casework, and Misc. plan items shown for scale only and are not provided with lease space.

The Timbers at Vancouver Mall

9120 NE Vancouver Mall Loop, Vancouver, WA 98662