



# Rare Office Condo Available for Sale Located in the California Avenue District Adjacent to Caltrain

**2421 PARK BOULEVARD  
PALO ALTO, CA**



## Property Highlights

\$1,795,000

Suite A202: ±1,325 SF

Ideal for Technology, Professional Services, Medical

2 Common Area Conference Rooms

Bright Space in Courtyard Setting

5 Underground Parking Spaces and Adjacent to City Parking Lot

Elevator Served

Walking Distance to Amenities- Adjacent to Caltrain

*For information, please contact:*

### Wayne Kumagai

Executive Managing Director  
t 650-688-8505  
wayne.kumagai@nmrk.com  
CA RE License #01136673

### John McKenna

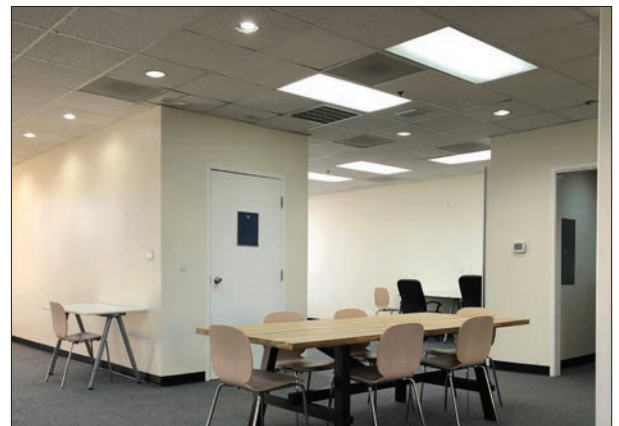
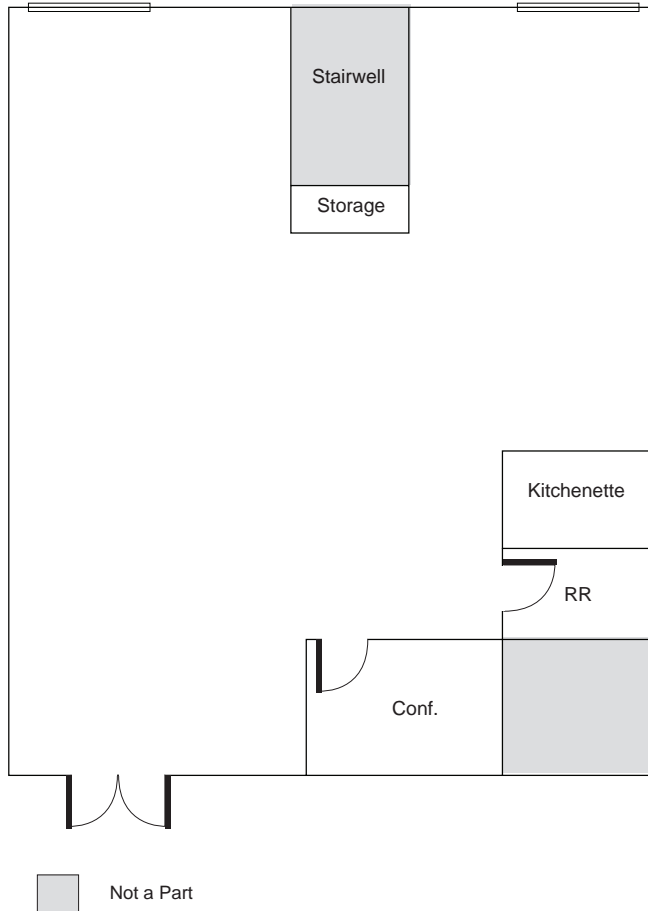
Senior Managing Director  
t 650-688-8548  
john.mckenna@nmrk.com  
CA RE License #01276576

[nmrk.com](http://nmrk.com)

# NEWMARK

The distributor of this communication is performing acts for which a real estate license is required. The information contained herein has been obtained from sources deemed reliable but has not been verified and no guarantee, warranty or representation, either express or implied, is made with respect to such information. Terms of sale or lease and availability are subject to change or withdrawal without notice. 14-0791.09/22

**Second Floor  
Suite A202: ±1,325 SF**



*For information, please contact:*

**Wayne Kumagai**  
*Executive Managing Director*  
t 650-688-8505  
wayne.kumagai@nmrk.com  
CA RE License #01136673

**John McKenna**  
*Senior Managing Director*  
t 650-688-8548  
john.mckenna@nmrk.com  
CA RE License #01276576

[nmrk.com](http://nmrk.com)

**NEWMARK**



*For information, please contact:*

**Wayne Kumagai**

*Executive Managing Director*

t 650-688-8505

wayne.kumagai@nmrk.com

CA RE License #01136673

**John McKenna**

*Senior Managing Director*

t 650-688-8548

john.mckenna@nmrk.com

CA RE License #01276576

[nmrk.com](http://nmrk.com)

**NEWMARK**