

# 500 BROADWAY

EAST SIDE BETWEEN BROOME AND SPRING STREETS



## DIRECTLY SOUTH OF BLOOMINGDALE'S HIGH IMPACT 45-FOOT FRONTAGE

### APPROXIMATE SIZE

4,200 SF retail ground floor  
4,200 SF storage basement  
4,200 SF storage sub basement

### CEILING HEIGHTS

16' retail ground floor  
11'6" storage basement  
8' storage sub basement

- PRIME TURN KEY RETAIL SPACE AVAILABLE FOR LEASE
- OPPORTUNITY TO CONVERT BASEMENT TO LEGAL SELLING SPACE
- EAST SIDE BENEFITS FROM AFTERNOON SUN
- OPEN LAYOUT WITH TENANT-CONTROLLED HVAC IN PLACE
- CONVEYOR BELT FROM SIDEWALK HATCH FOR INVENTORY
- FRONTAGE: 45-FEET
- POSSESSION IMMEDIATE
- TERM NEGOTIABLE

# 500 BROADWAY

EAST SIDE BETWEEN BROOME AND SPRING STREETS



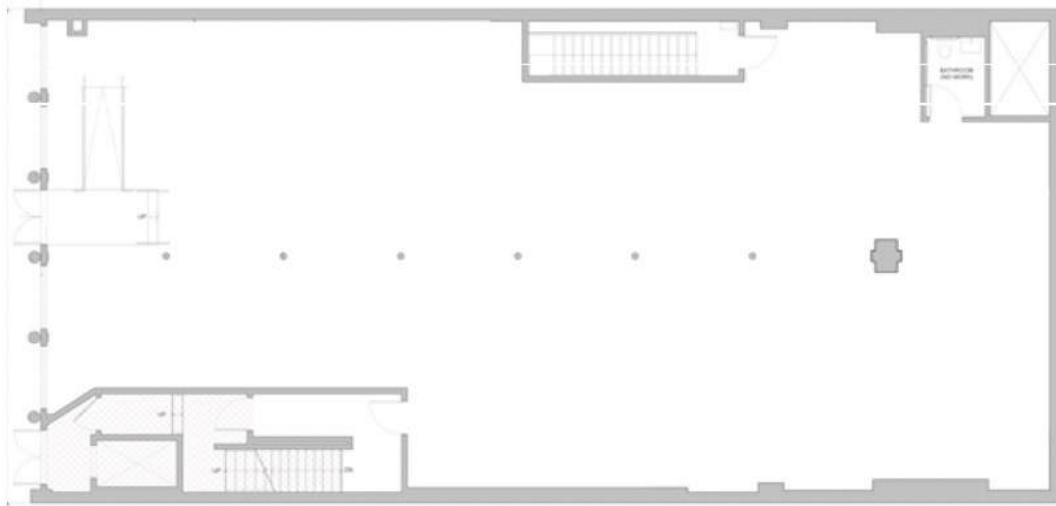
## NEIGHBORING RETAILERS

BLOOMINGDALE'S  
ZARA  
UNIQLO  
NIKE  
ARMANI EXCHANGE  
COTTON ON  
LULULEMON  
GUESS  
LACOSTE  
CONVERSE  
BANANA REPUBLIC  
SEPHORA  
J CREW  
MADEWELL



# 500 BROADWAY

EAST SIDE BETWEEN BROOME AND SPRING STREETS



1ST FLOOR

## GROUND FLOOR



## STORAGE BASEMENT

# 500 BROADWAY

EAST SIDE BETWEEN BROOME AND SPRING STREETS



Peter Weisman

212.300.3077

[peter@weismannyc.com](mailto:peter@weismannyc.com)